



Cagliari
WG F Workshop „Flash Floods and Pluvial Flooding“
May 2010

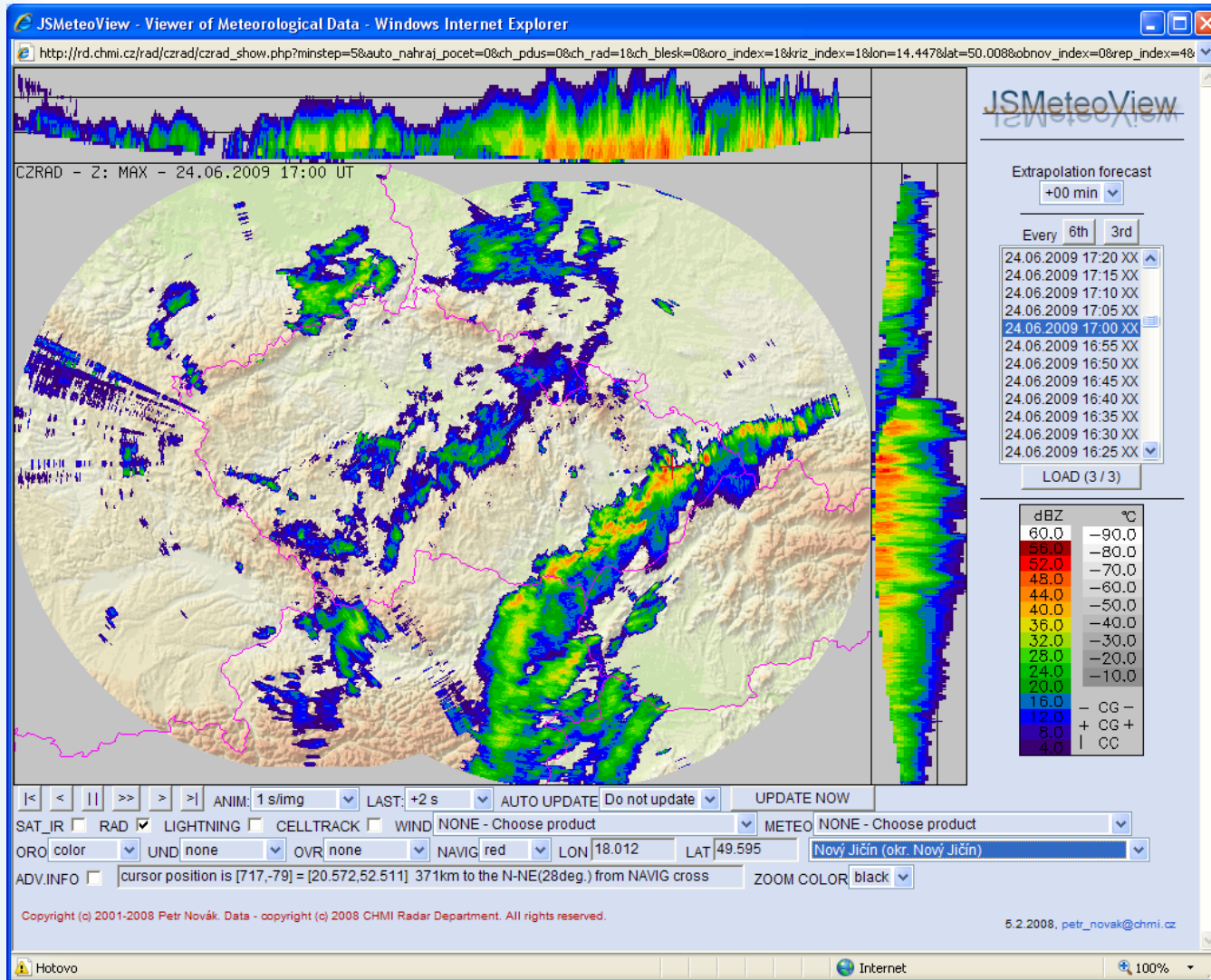
Flash Floods in the Czech Republic – Event of 2009 & method of flash flood risk evaluation

Jan Danhelka, Karel Drbal, Pavla Stepankova

Czech Hydrometeorological Institute, TGM Water Research Institute

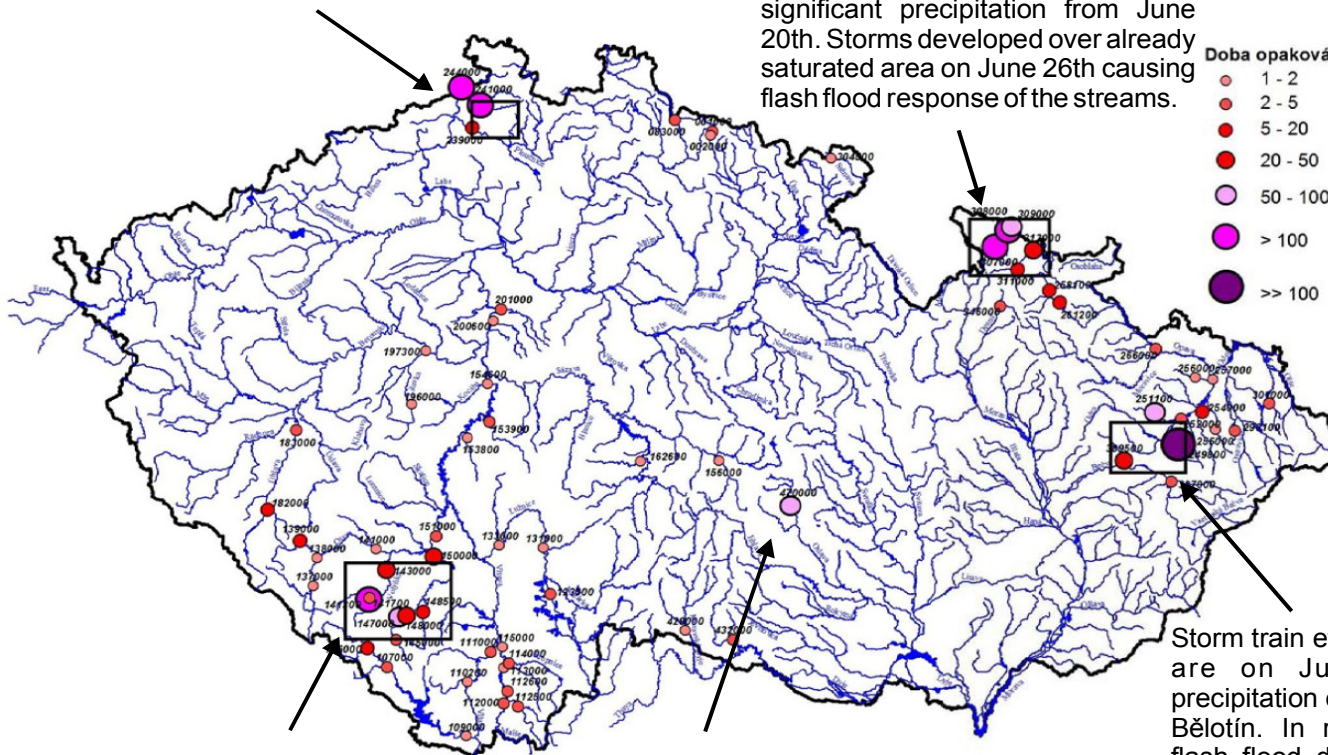
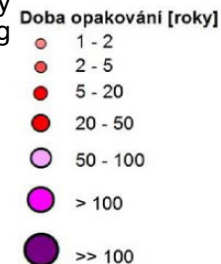
e-mail: danhelka@chmi.cz

June 24th 2009



Kamenice and Bystrá rivers were affected by storms repeatedly on July 1st and 4th.

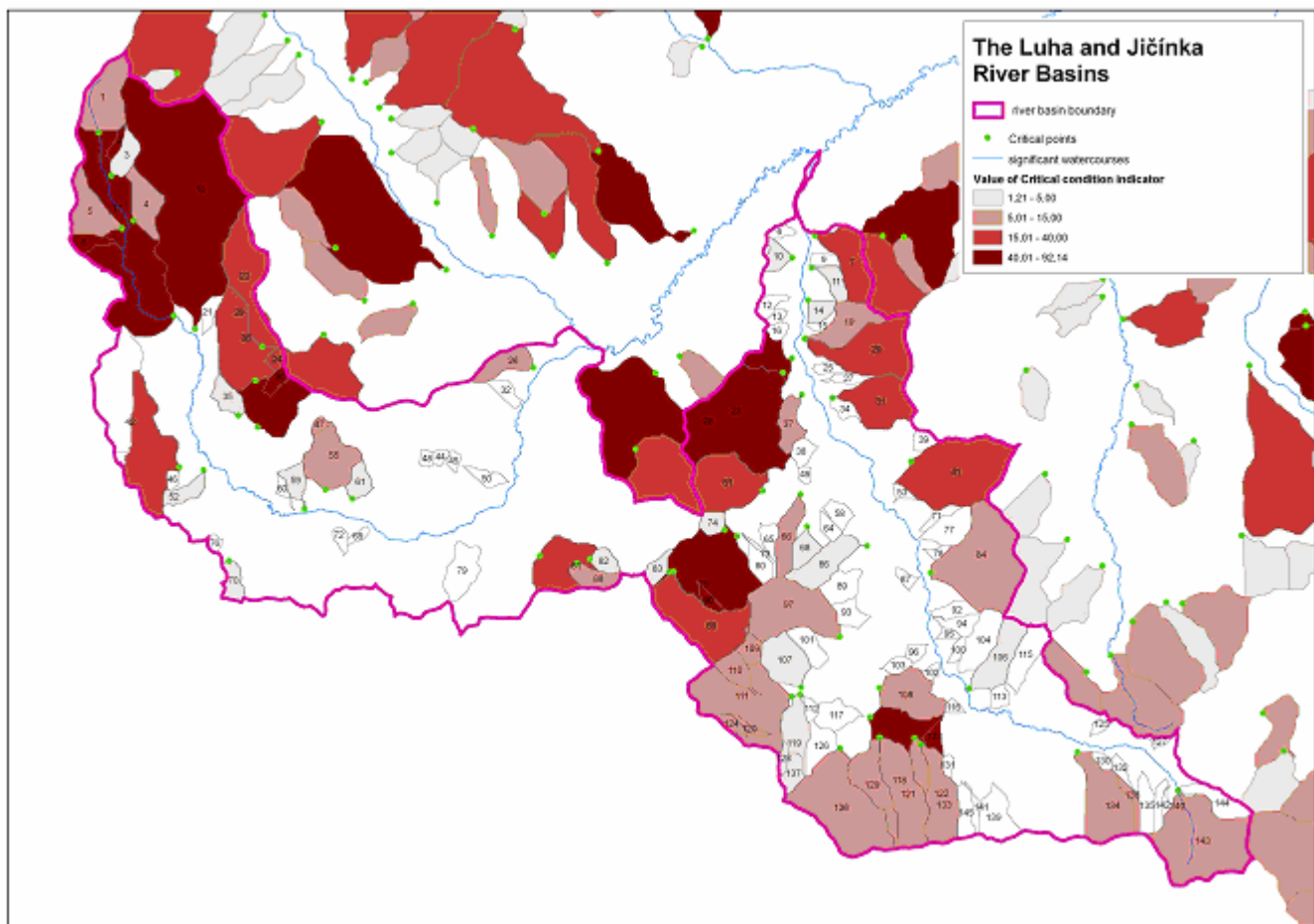
Vidnávka and Bělá rivers (and other streams in the area) received significant precipitation from June 20th. Storms developed over already saturated area on June 26th causing flash flood response of the streams.



Blanice and Volyňka rivers were affected by permanent precipitation from June 20th. Saturated basins were hit by storm precipitation on June 27th.

Oslava river experienced storm precipitation on July 2nd. The flash flood was successfully transformed by Mostišťe reservoir situated just downstream from highly affected area.

Storm train effect formed over the area on June 24th. 3-hour precipitation exceeded 120 mm in Bělotin. In response disastrous flash flood developed on Luha and Jičínka rivers. In addition close basin of Husí potok creek was affected by flood on July 2nd.





<http://voda.chmi.cz/ps09/index.html>