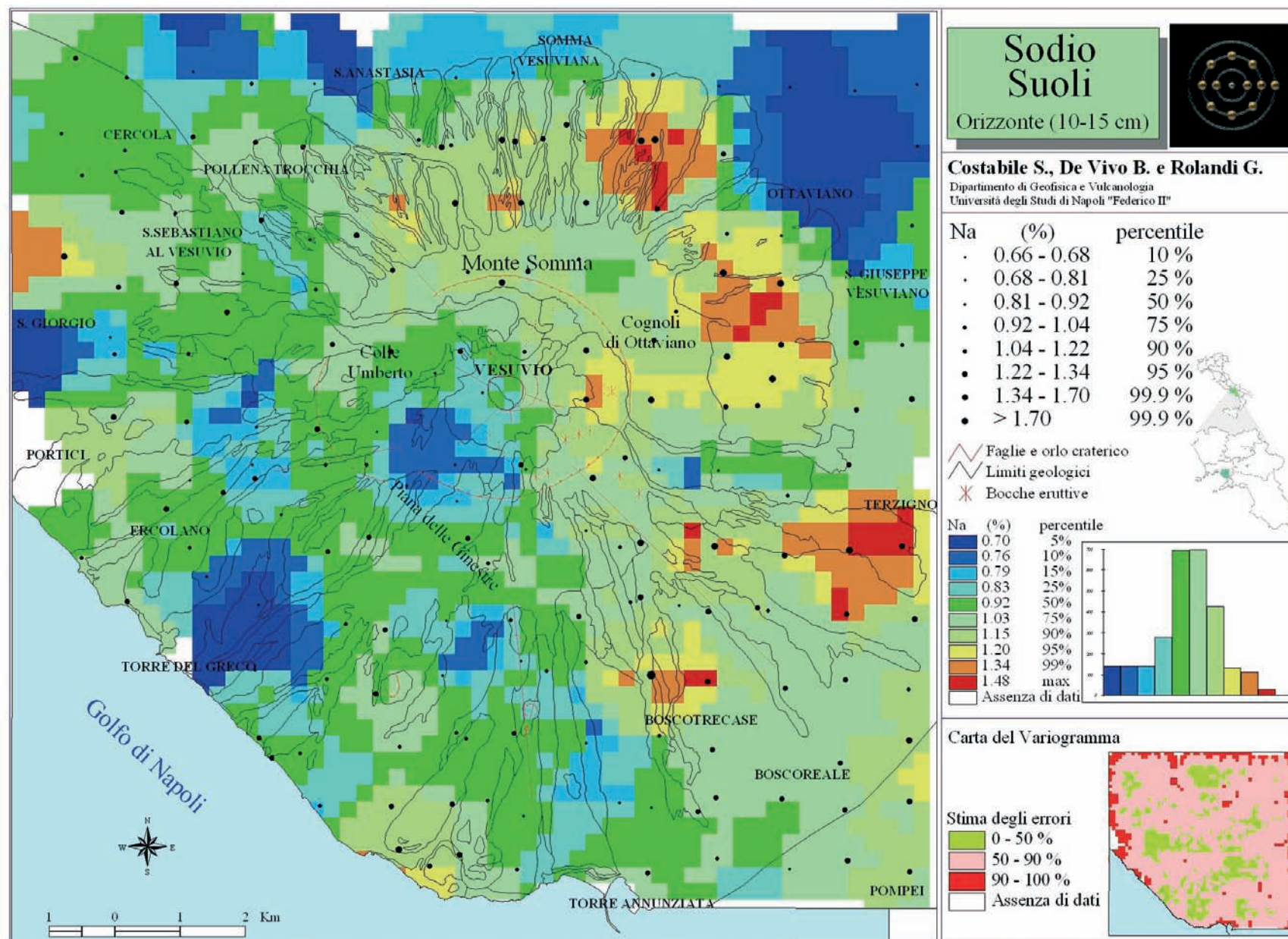
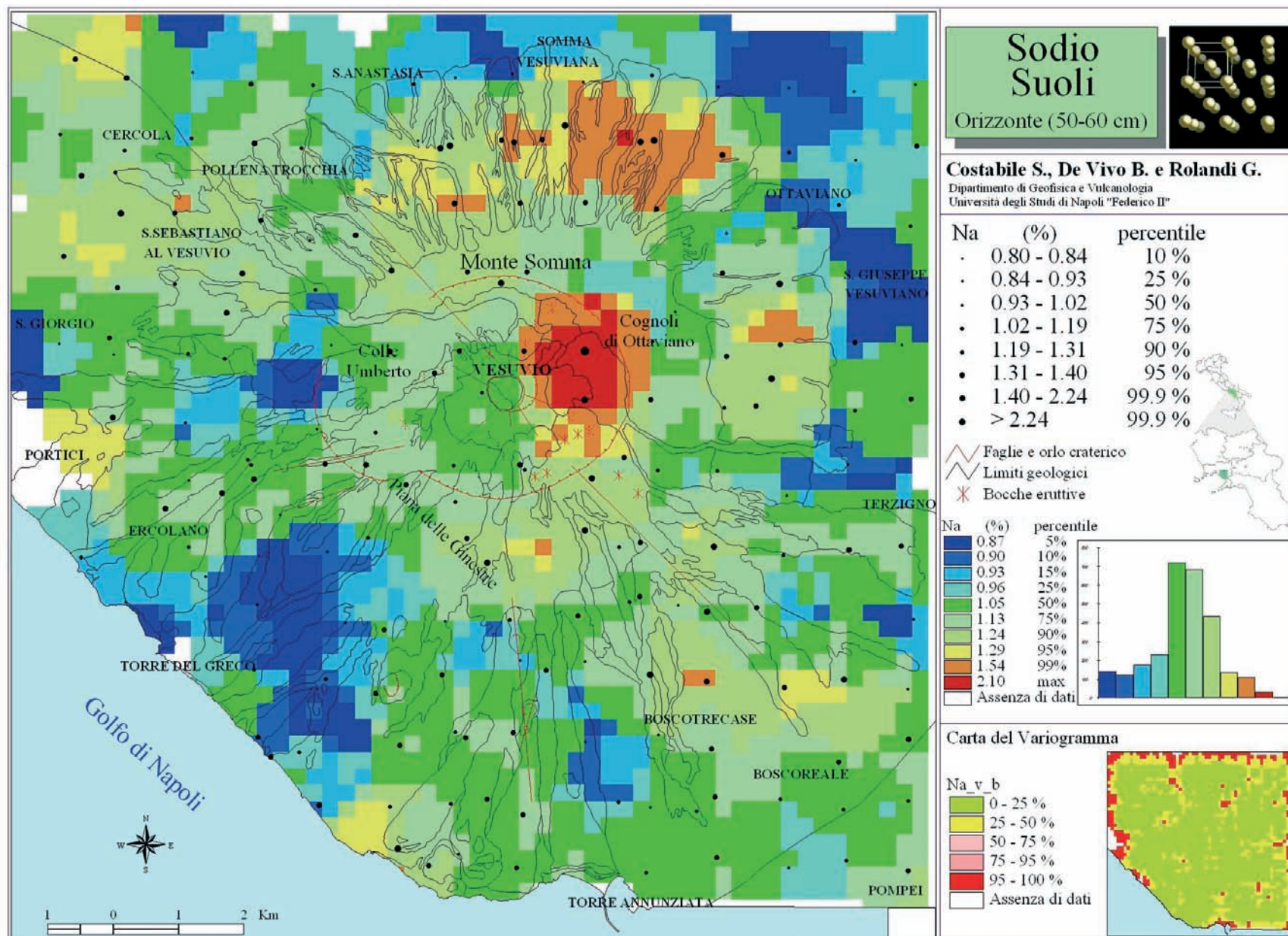


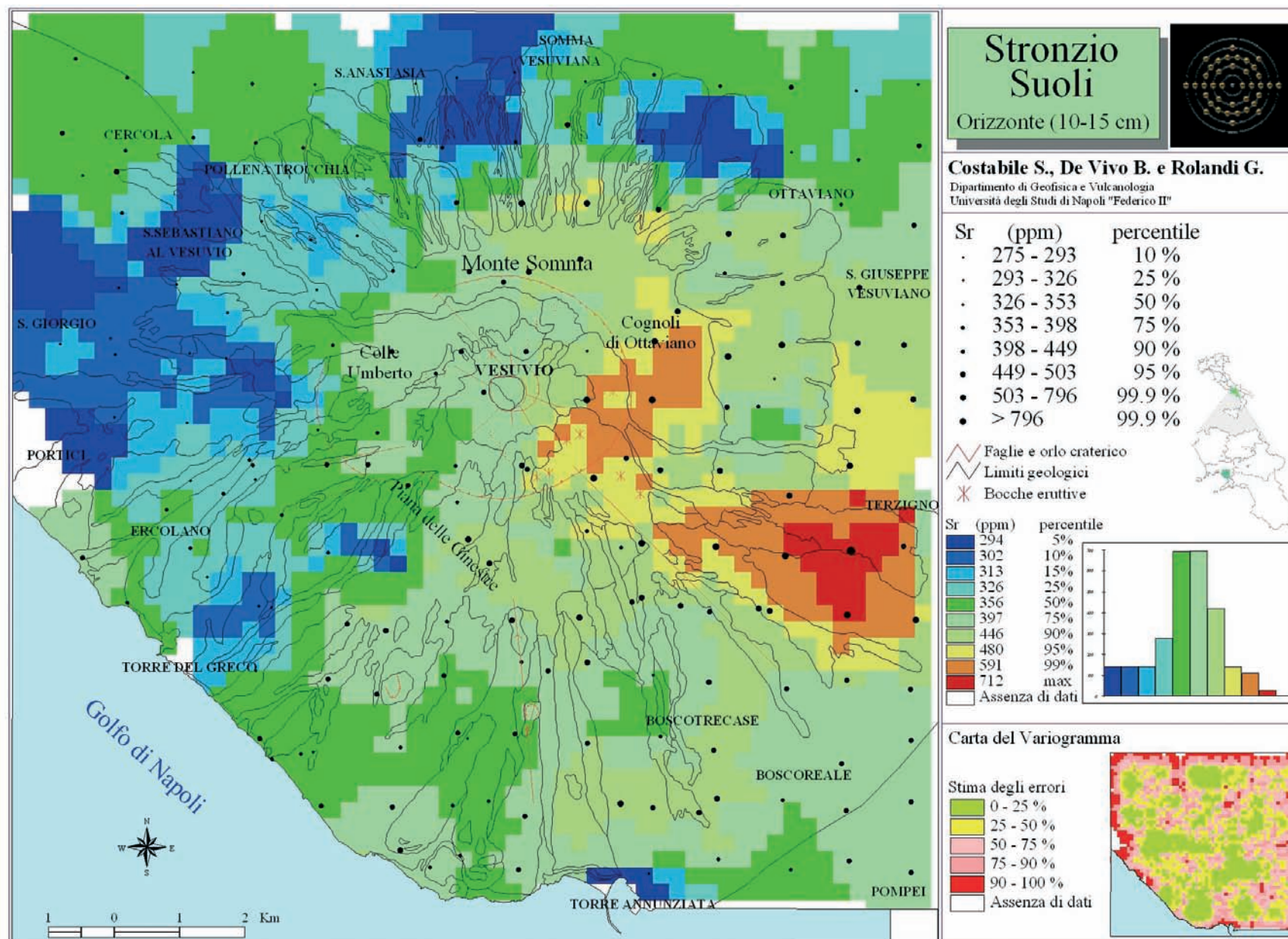
T A V O L E
51 - 89



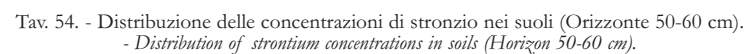
Tav. 51. - Distribuzione delle concentrazioni di sodio nei suoli (Orizzonte 10-15 cm).
- Distribution of sodium concentrations in soils (Horizon 10-15 cm).

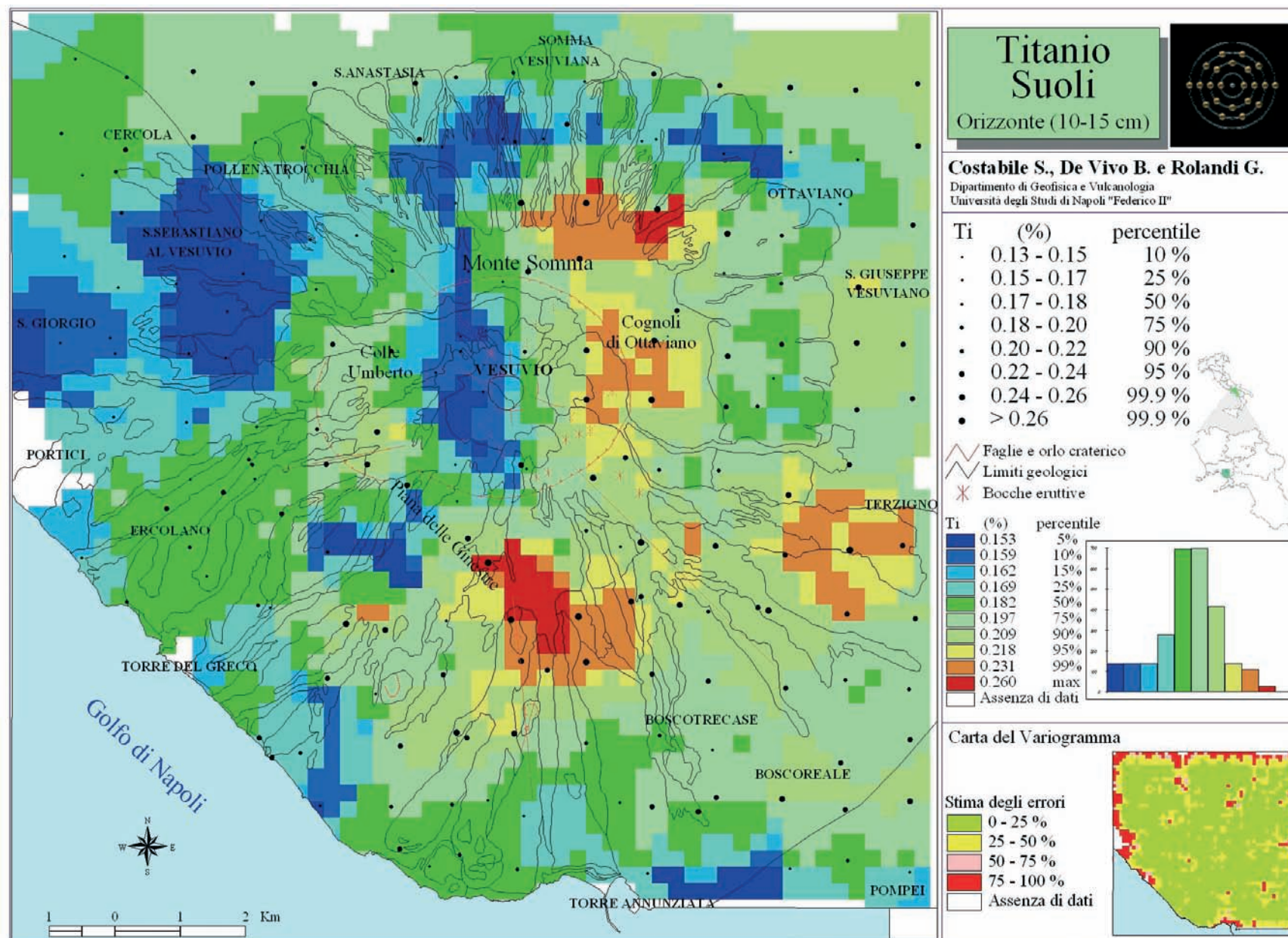


Tav. 52. - Distribuzione delle concentrazioni di sodio nei suoli (Orizzonte 50-60 cm).
- Distribution of sodium concentrations in soils (Horizon 50-60 cm).

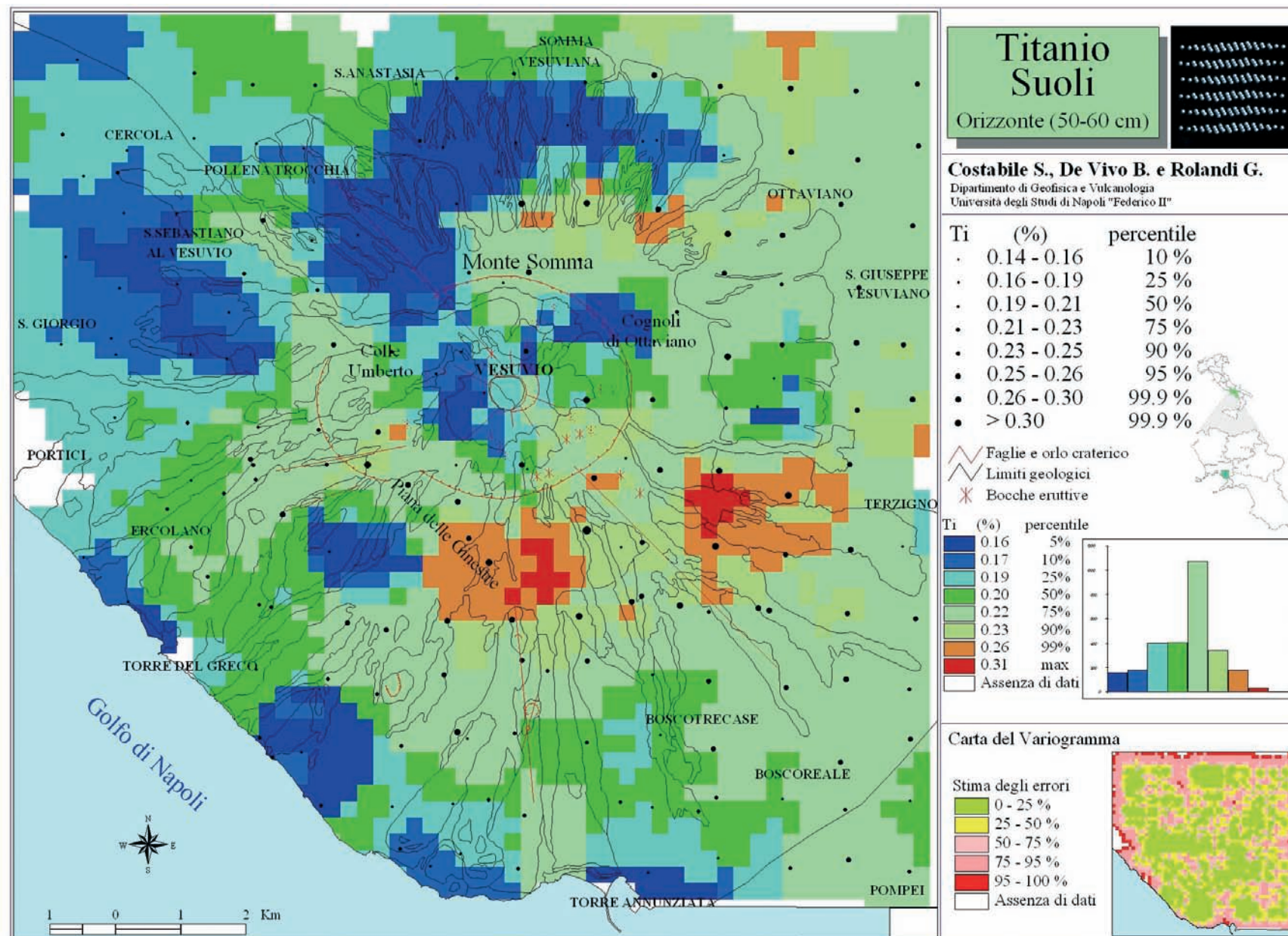


Tav. 53. - Distribuzione delle concentrazioni di stronzio nei suoli (Orizzonte 10-15 cm).
- Distribution of strontium concentrations in soils (Horizon 10-15 cm).

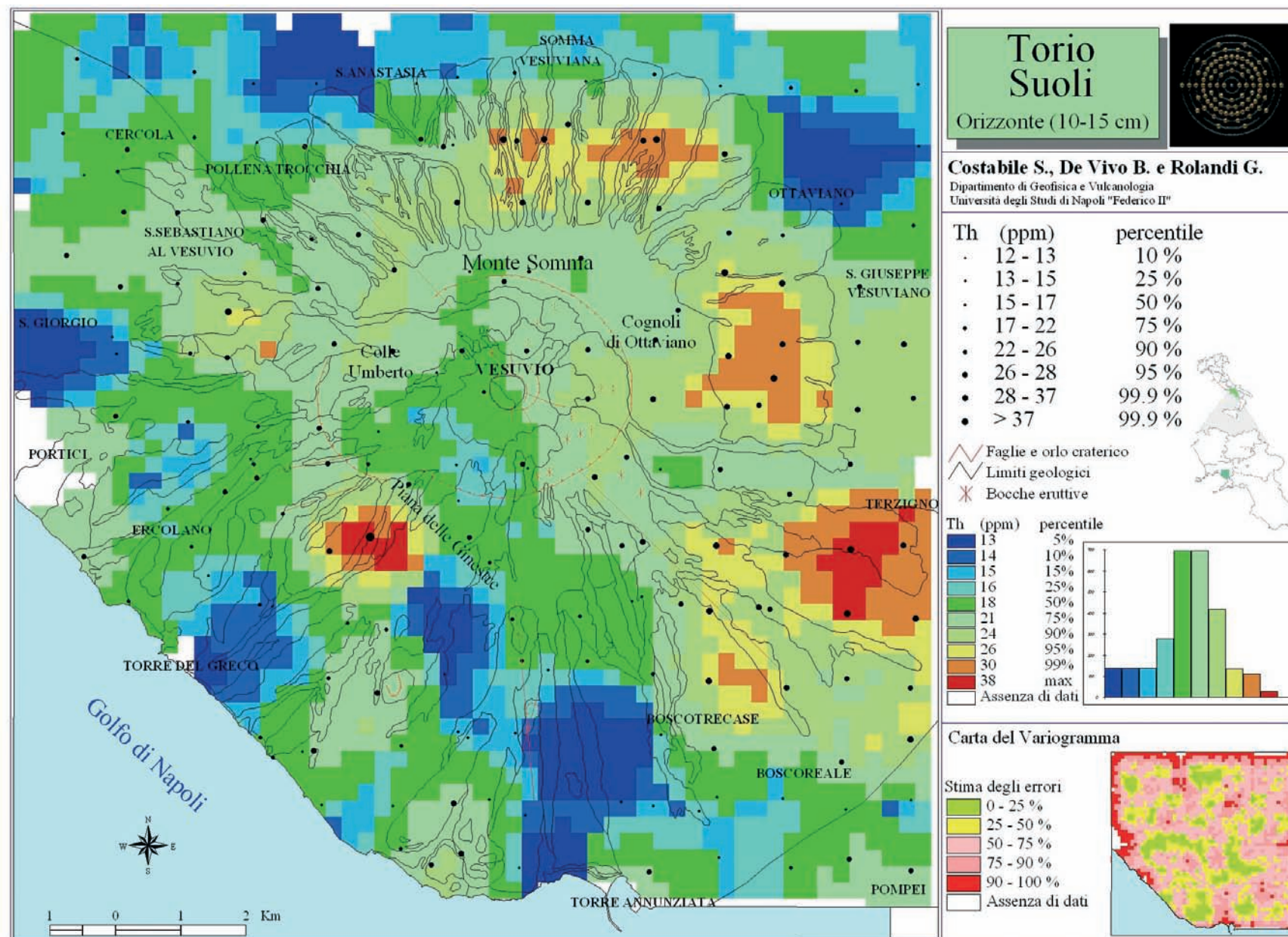




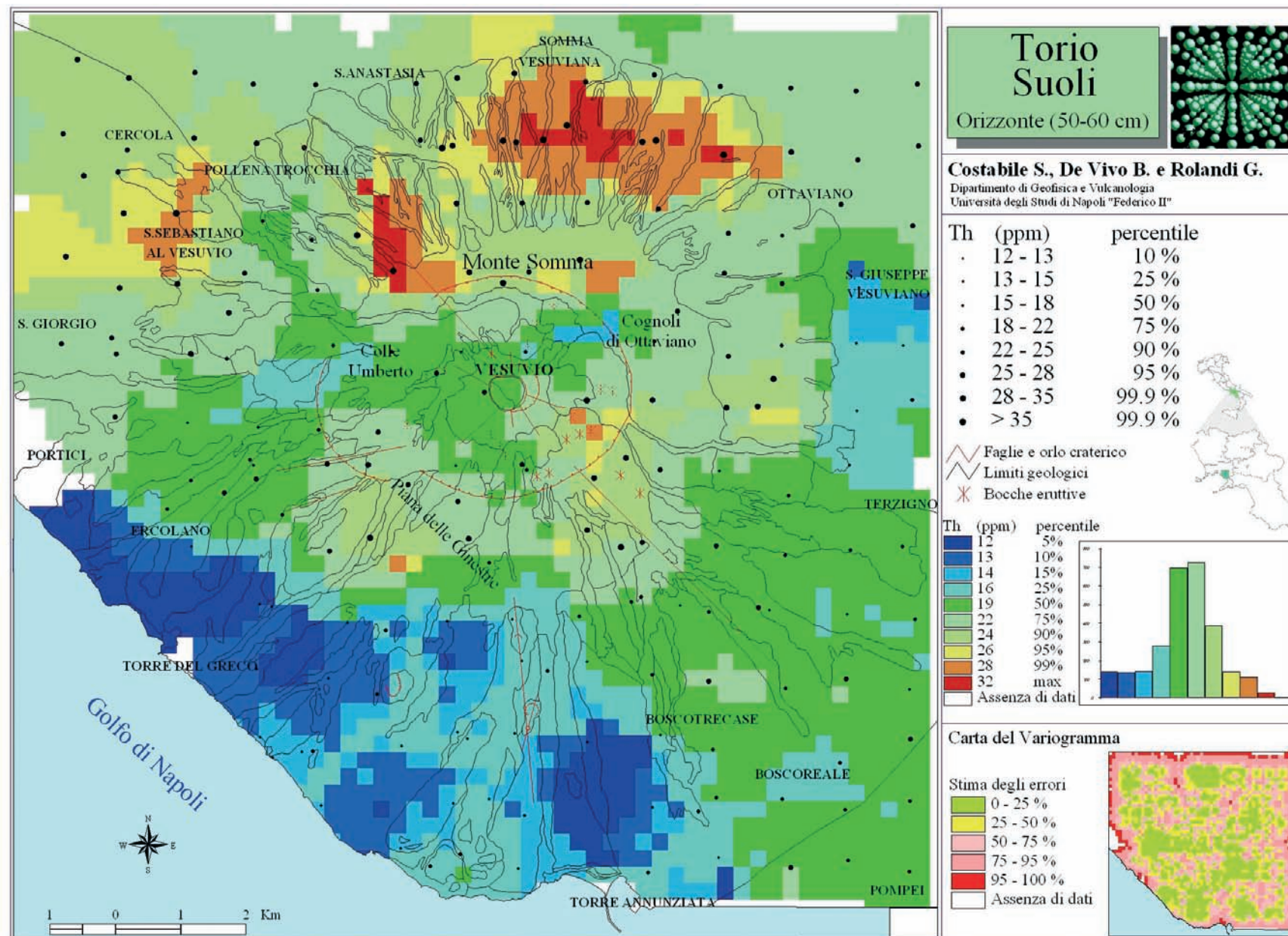
Tav. 55. - Distribuzione delle concentrazioni di titanio nei suoli (Orizzonte 10-15 cm).
- Distribution of titanium concentrations in soils (Horizon 10-15 cm).



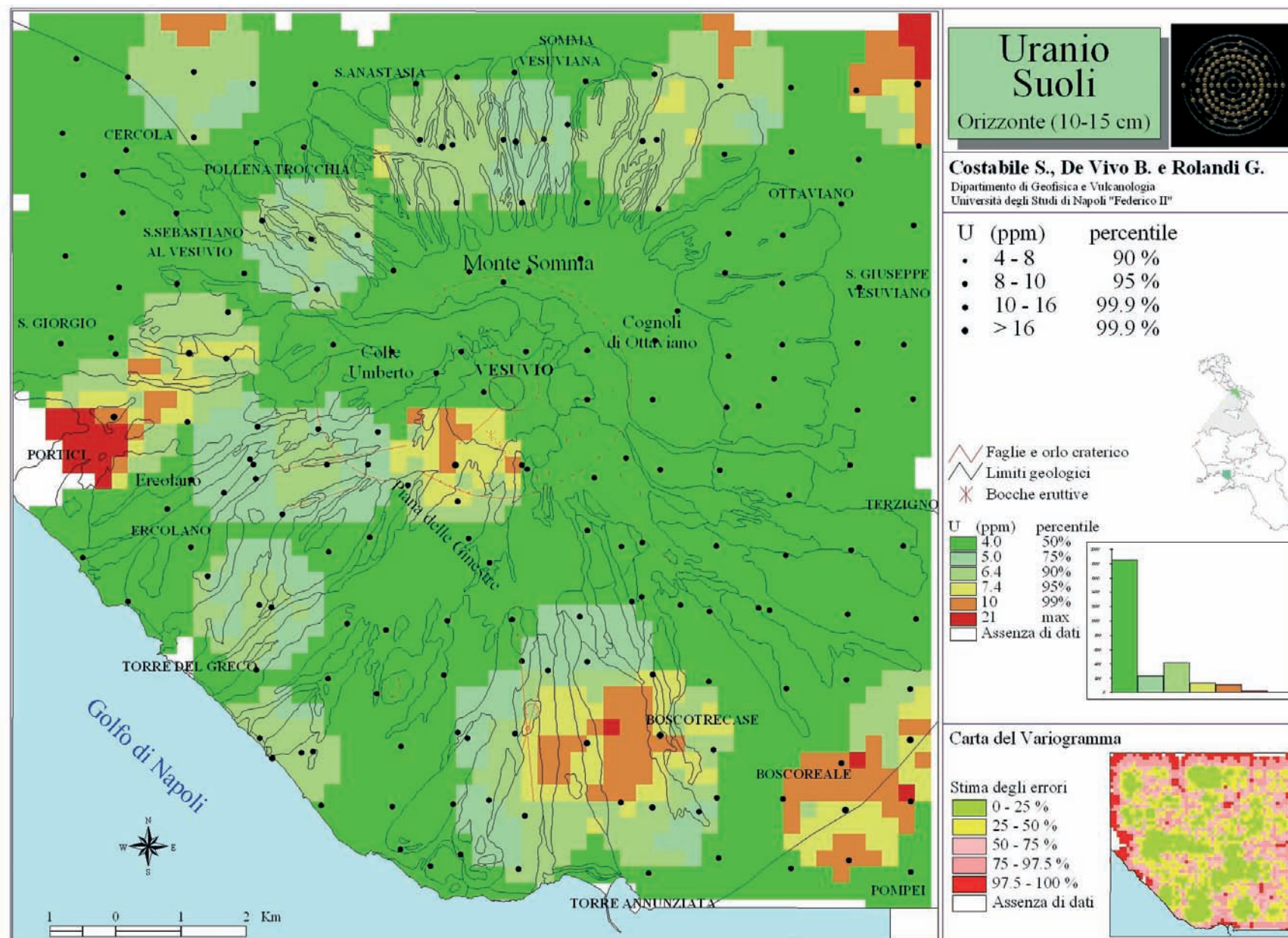
Tav. 56. - Distribuzione delle concentrazioni di titanio nei suoli (Orizzonte 50-60 cm).
- Distribution of titanium concentrations in soils (Horizon 50-60 cm).



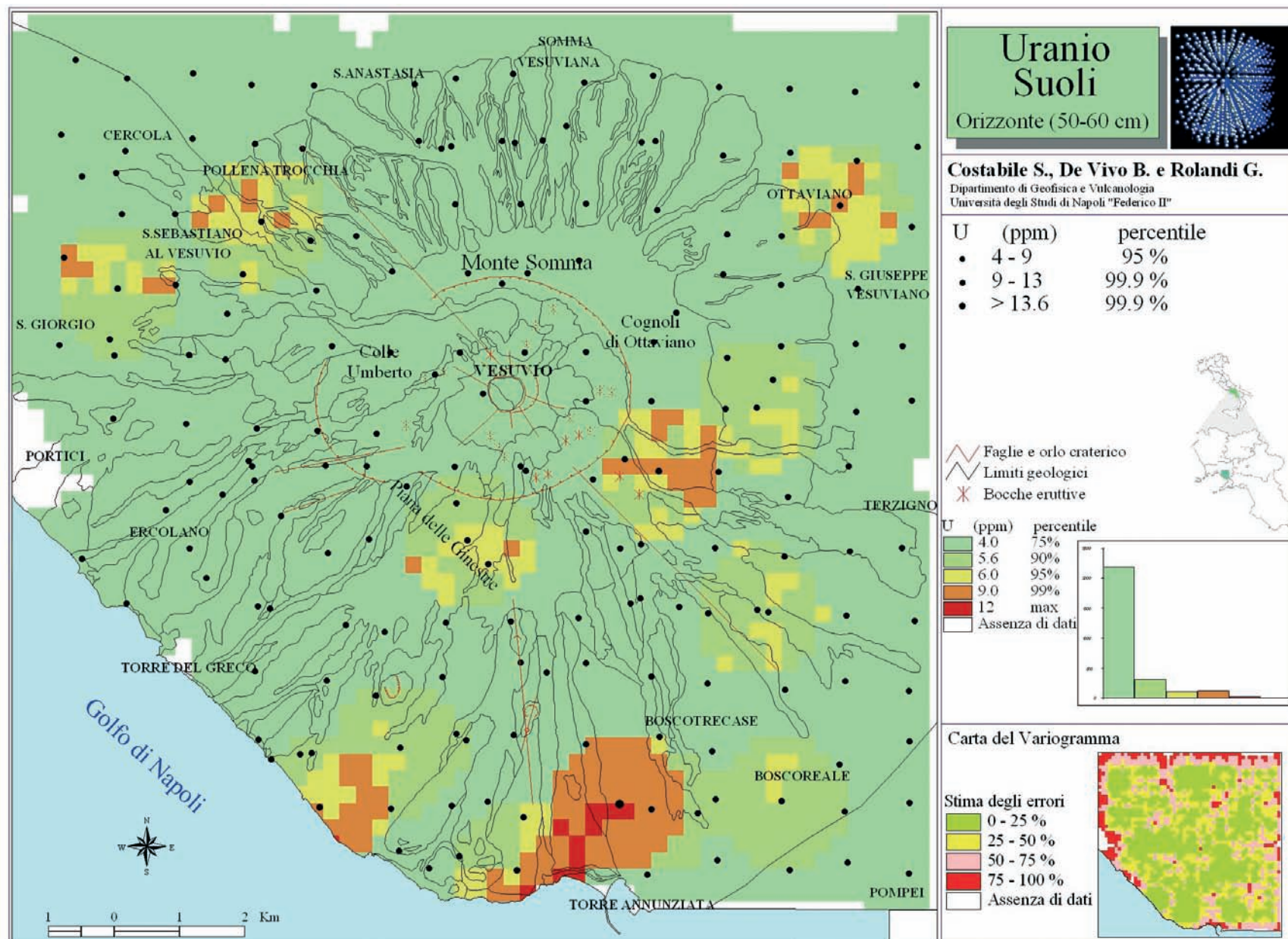
Tav. 57. - Distribuzione delle concentrazioni di torio nei suoli (Orizzonte 10-15 cm).
- Distribution of thorium concentrations in soils (Horizon 10-15 cm).



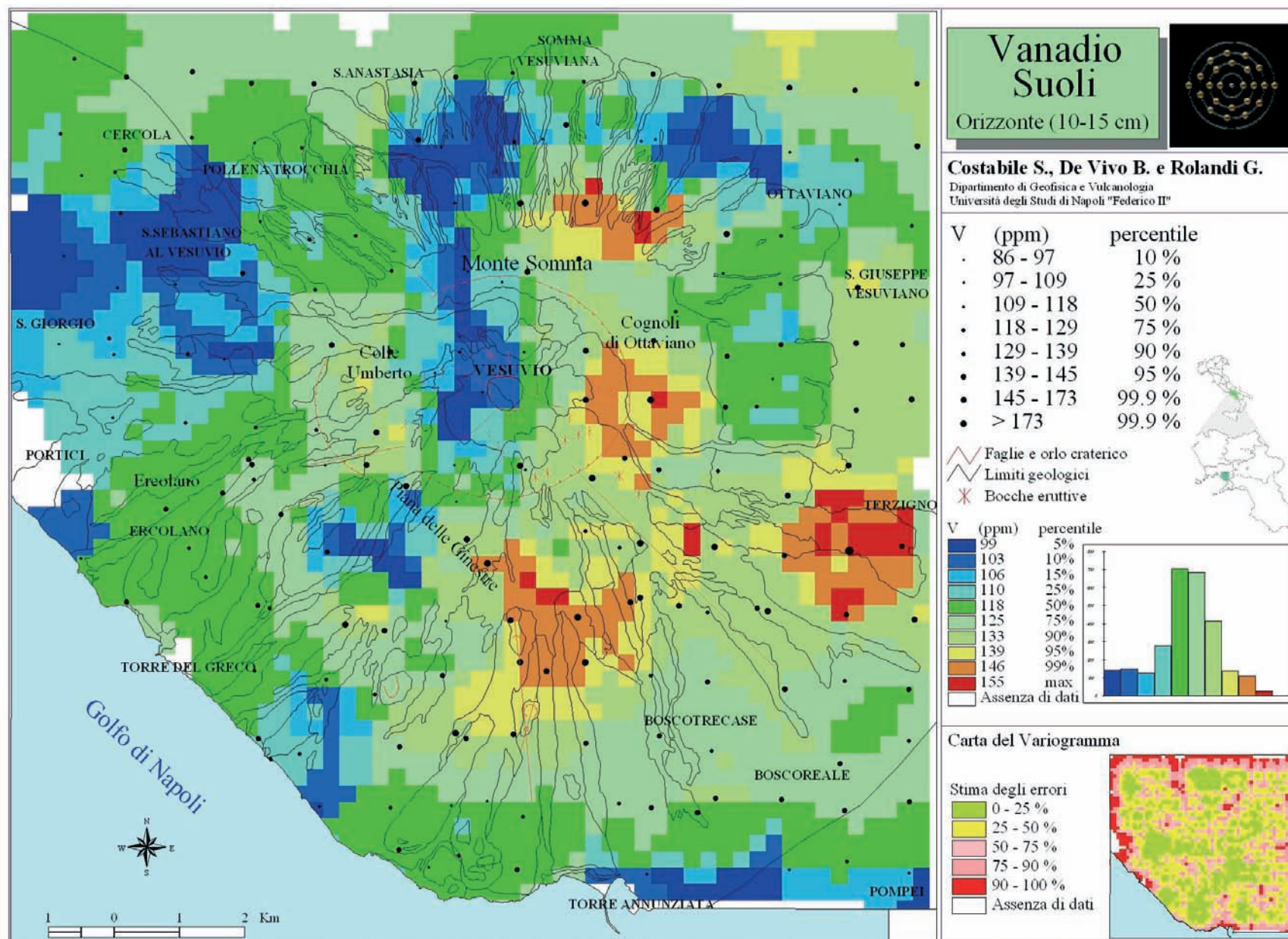
Tav. 58. - Distribuzione delle concentrazioni di torio nei suoli (Orizzonte 50-60 cm).
- Distribution of thorium concentrations in soils (Horizon 50-60 cm).



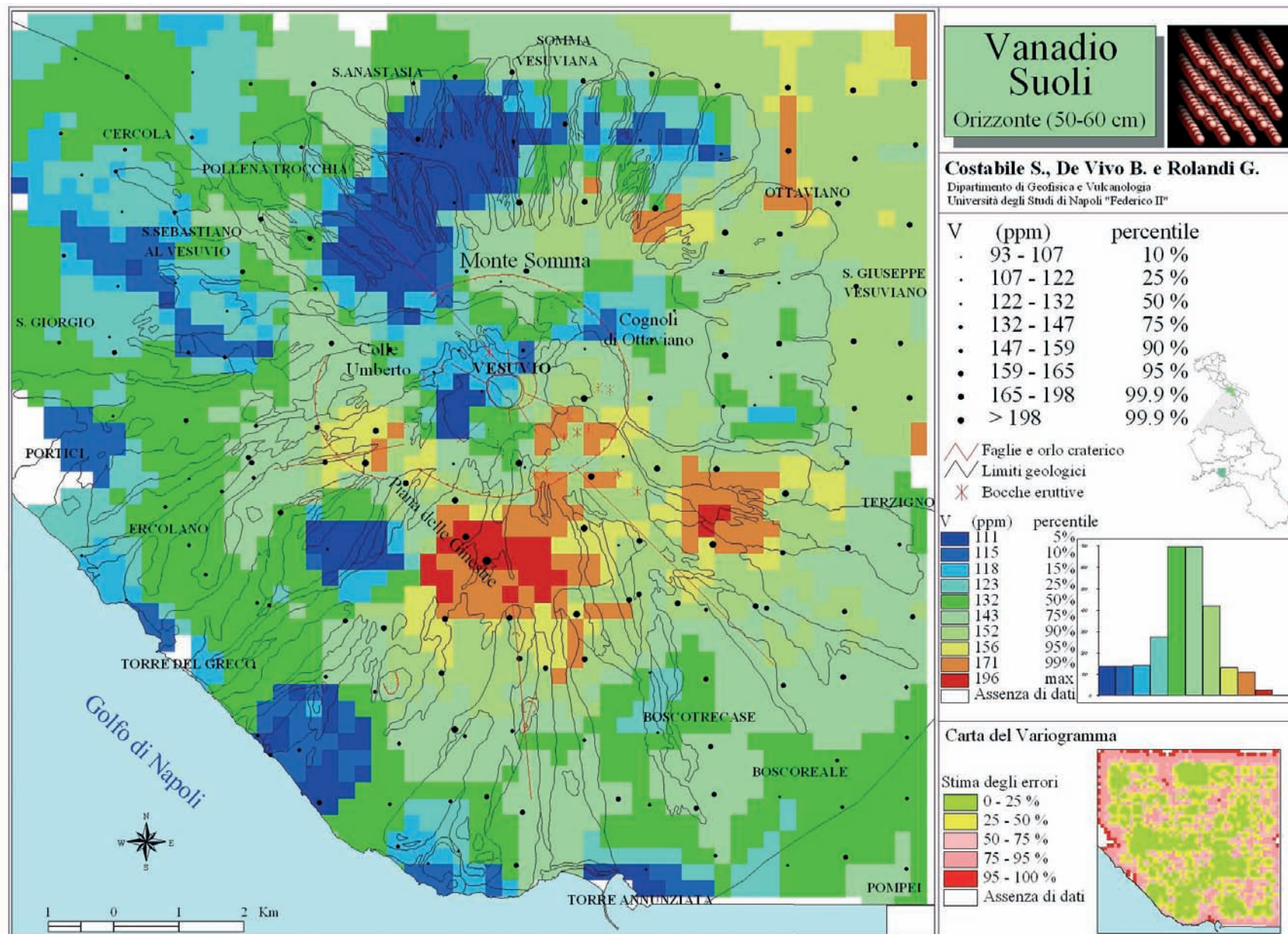
Tav. 59. - Distribuzione delle concentrazioni di uranio nei suoli (Orizzonte 10-15 cm).
 . - Distribution of uranium concentrations in soils (Horizon 10-15 cm).



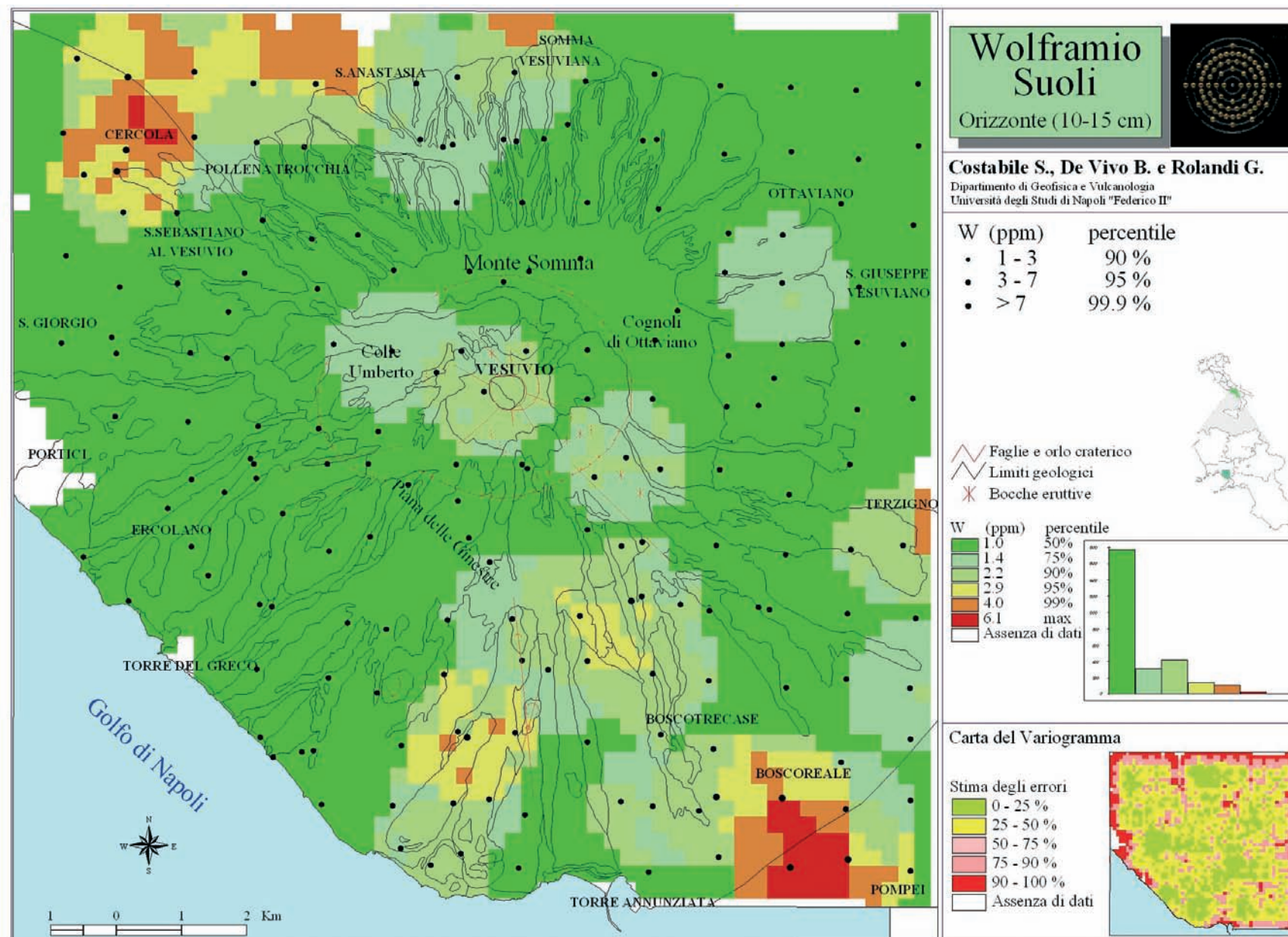
Tav. 60. - Distribuzione delle concentrazioni di uranio nei suoli (Orizzonte 50-60 cm).
 - Distribution of uranium concentrations in soils (Horizon 50-60 cm).



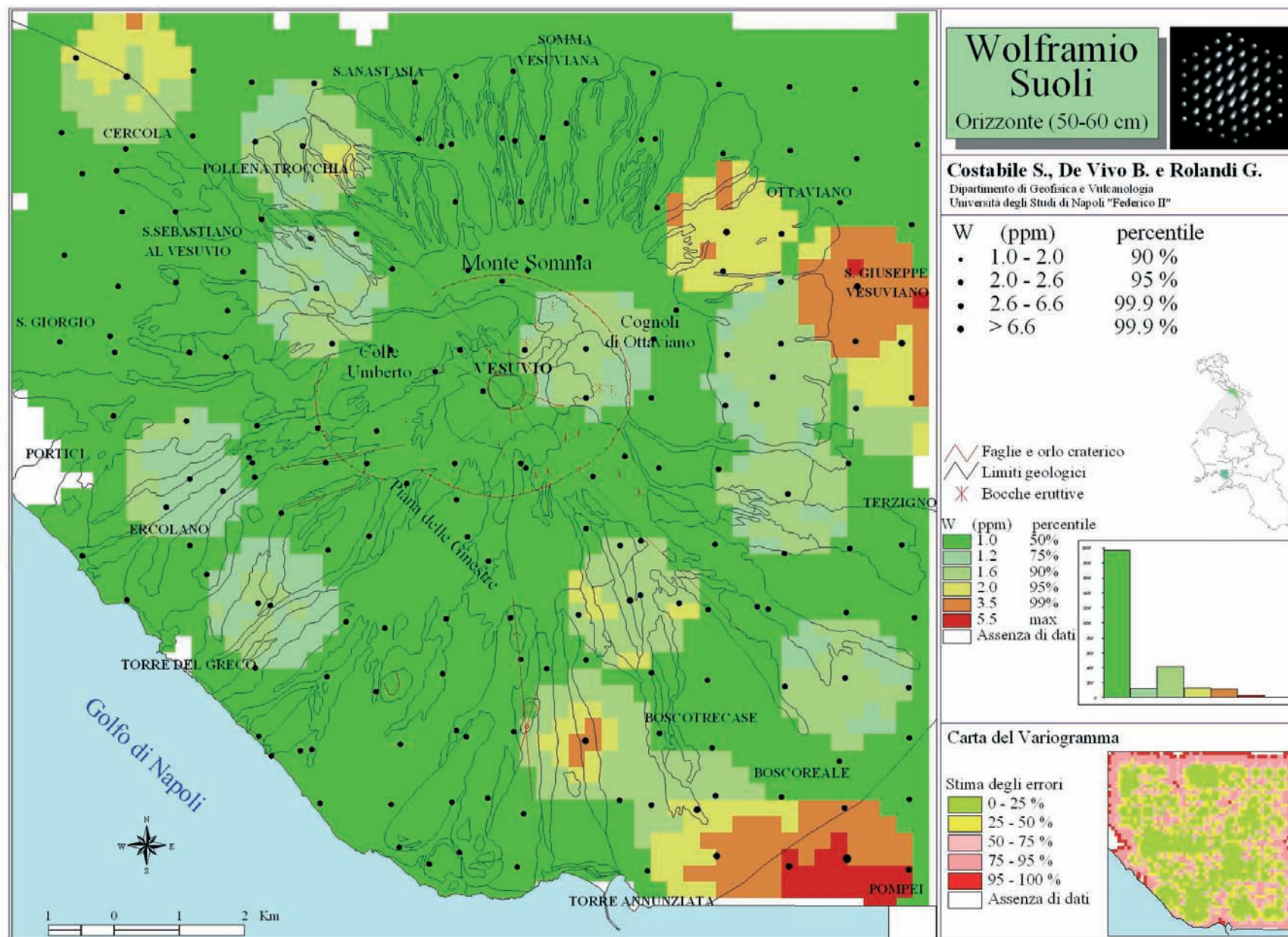
Tav. 61. - Distribuzione delle concentrazioni di vanadio nei suoli (Orizzonte 10-15 cm).
- Distribution of vanadium concentrations in soils (Horizon 10-15 cm).



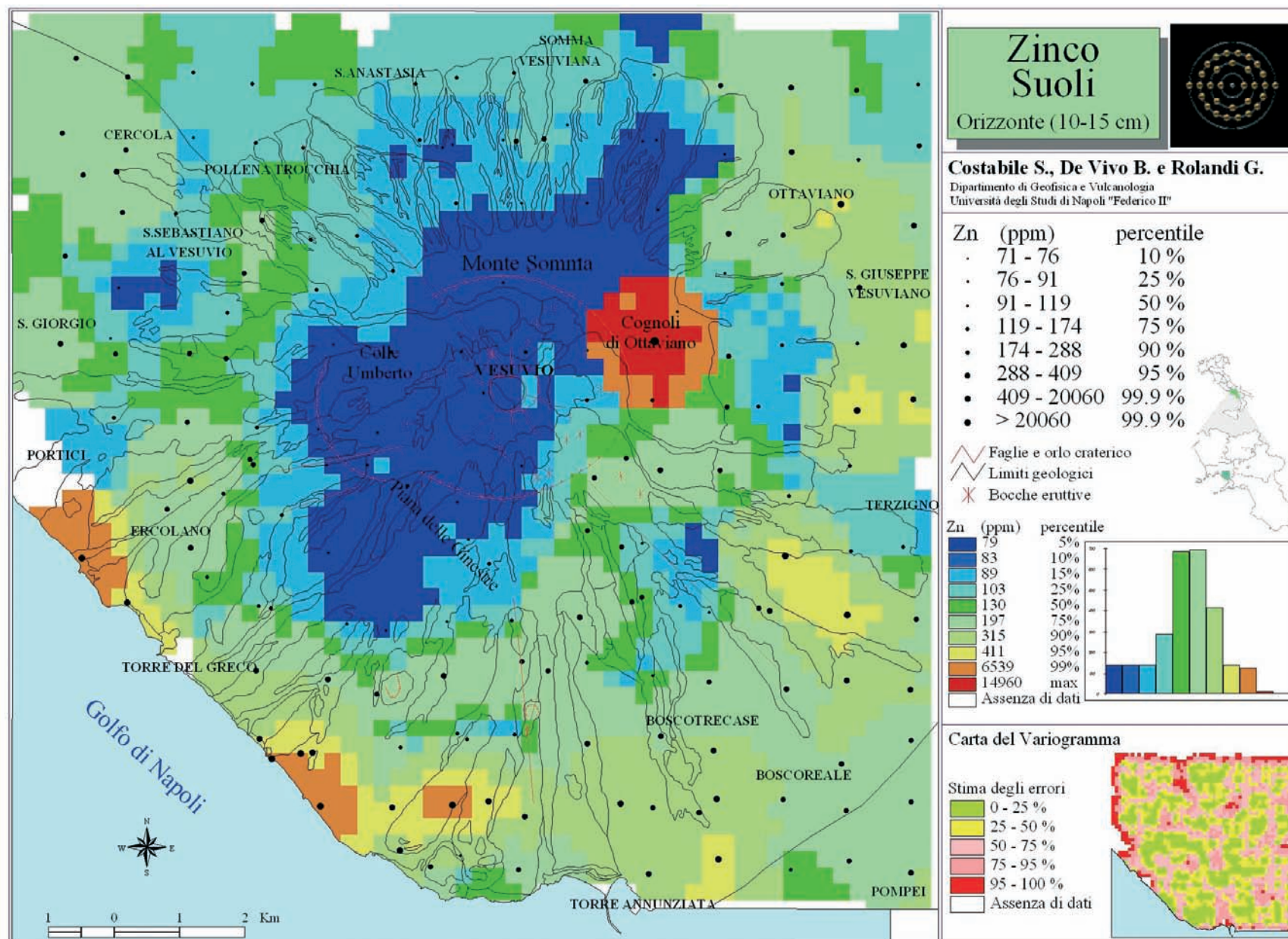
Tav. 62. - Distribuzione delle concentrazioni di vanadio nei suoli (Orizzonte 50-60 cm).
- Distribution of vanadium concentrations in soils (Horizon 50-60 cm).



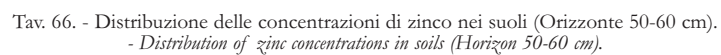
Tav. 63. - Distribuzione delle concentrazioni di wolframio (tungsteno) nei suoli (Orizzonte 10-15 cm).
- Distribution of wolfram (tungsten) concentrations in soils (Horizon 10-15 cm).

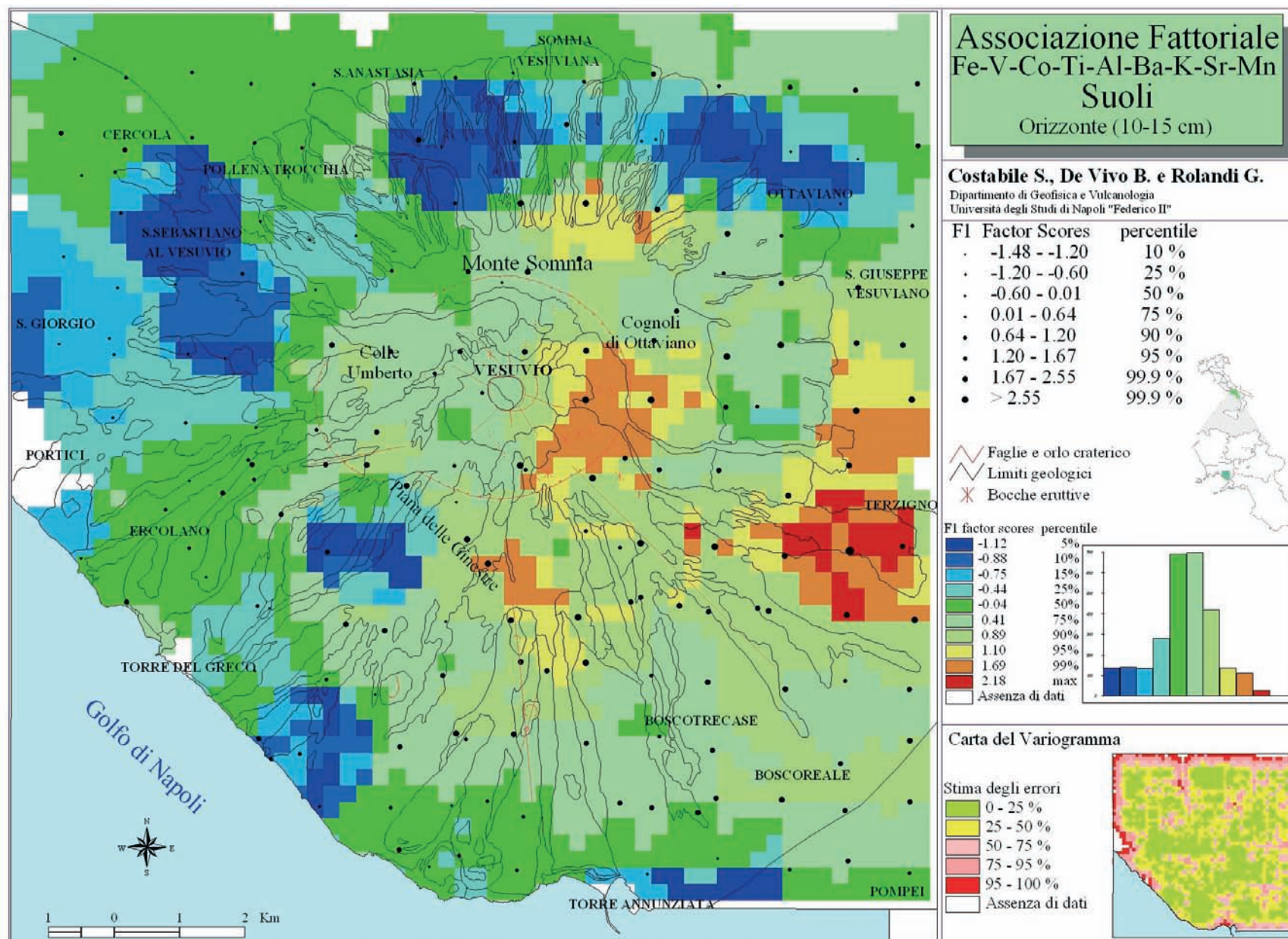


Tav. 64. - Distribuzione delle concentrazioni di wolframio (tungsteno) nei suoli (Orizzonte 50-60 cm).
- Distribution of wolfram (tungsten) concentrations in soils (Horizon 50-60 cm).

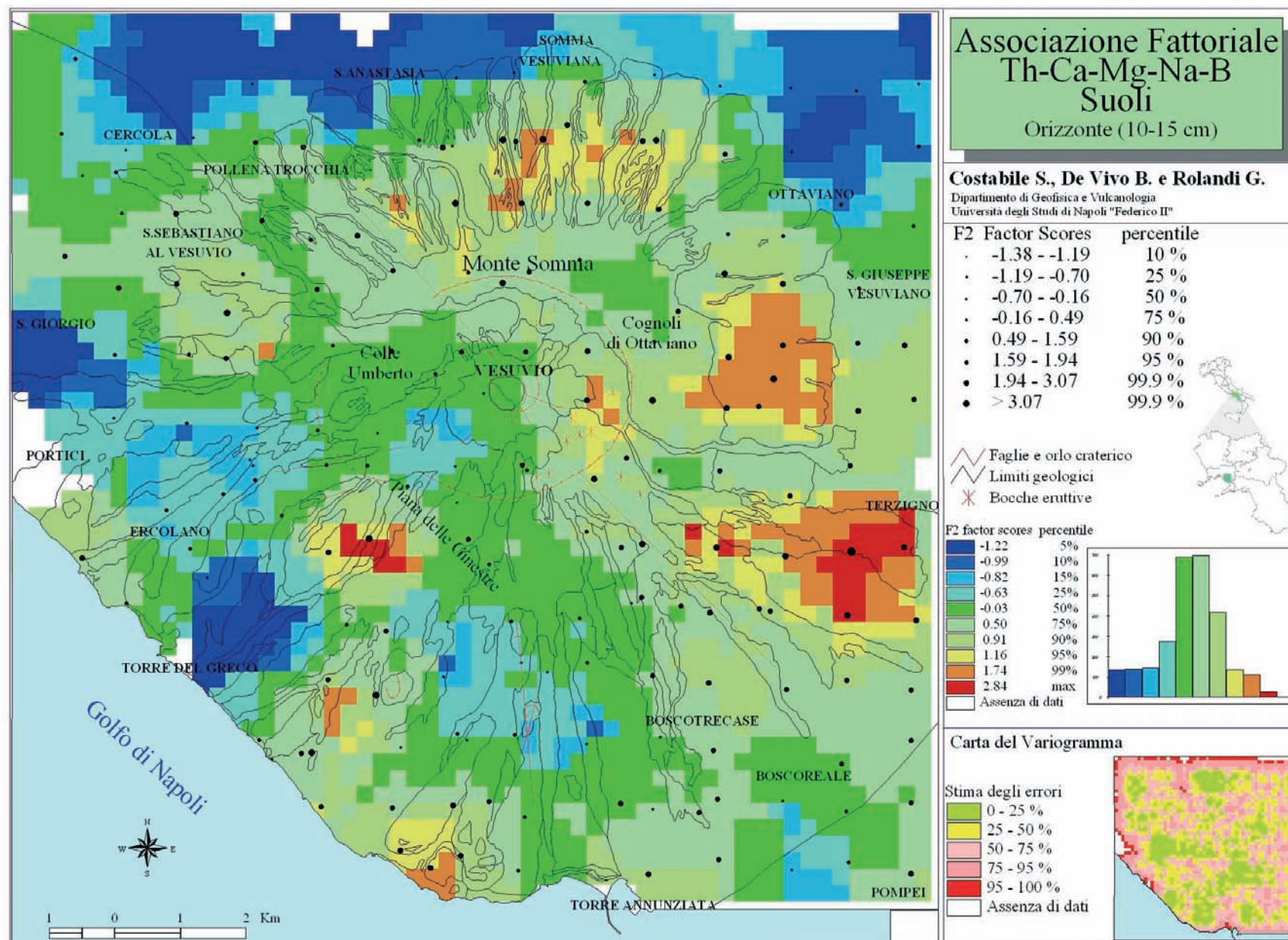


Tav. 65. - Distribuzione delle concentrazioni di zinco nei suoli (Orizzonte 10-15 cm).
- Distribution of zinc concentrations in soils (Horizon 10-15 cm).

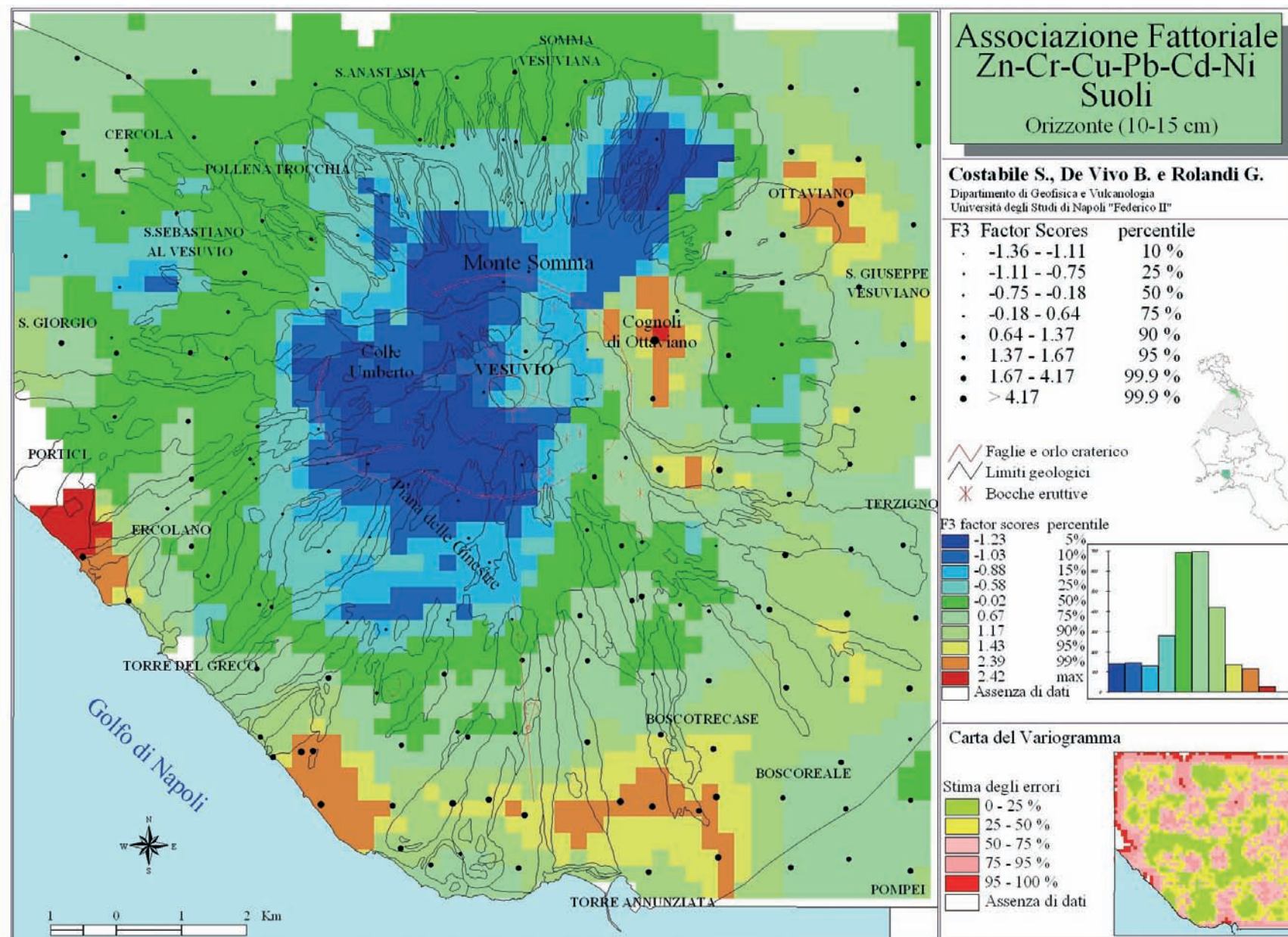




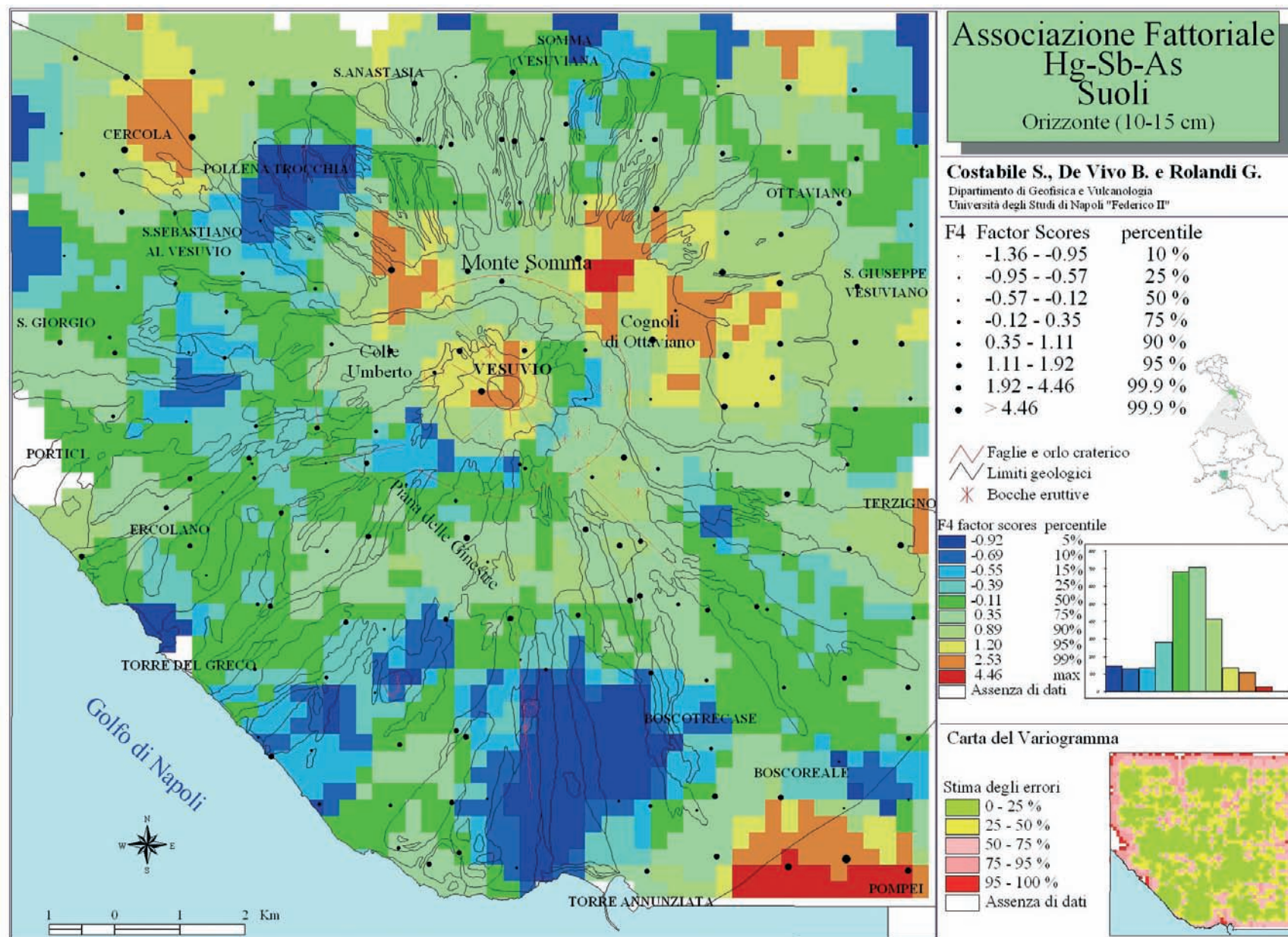
Tav. 67. - Distribuzione dei factor scores dell'associazione fattoriale Fe-V-Co-Ti-Al-Ba-K-Sr-Mn nei suoli (Orizzonte 10-15 cm).
- Factor scores distribution of Fe-V-Co-Ti-Al-Ba-K-Sr-Mn association in soils (Horizon 10-15 cm).



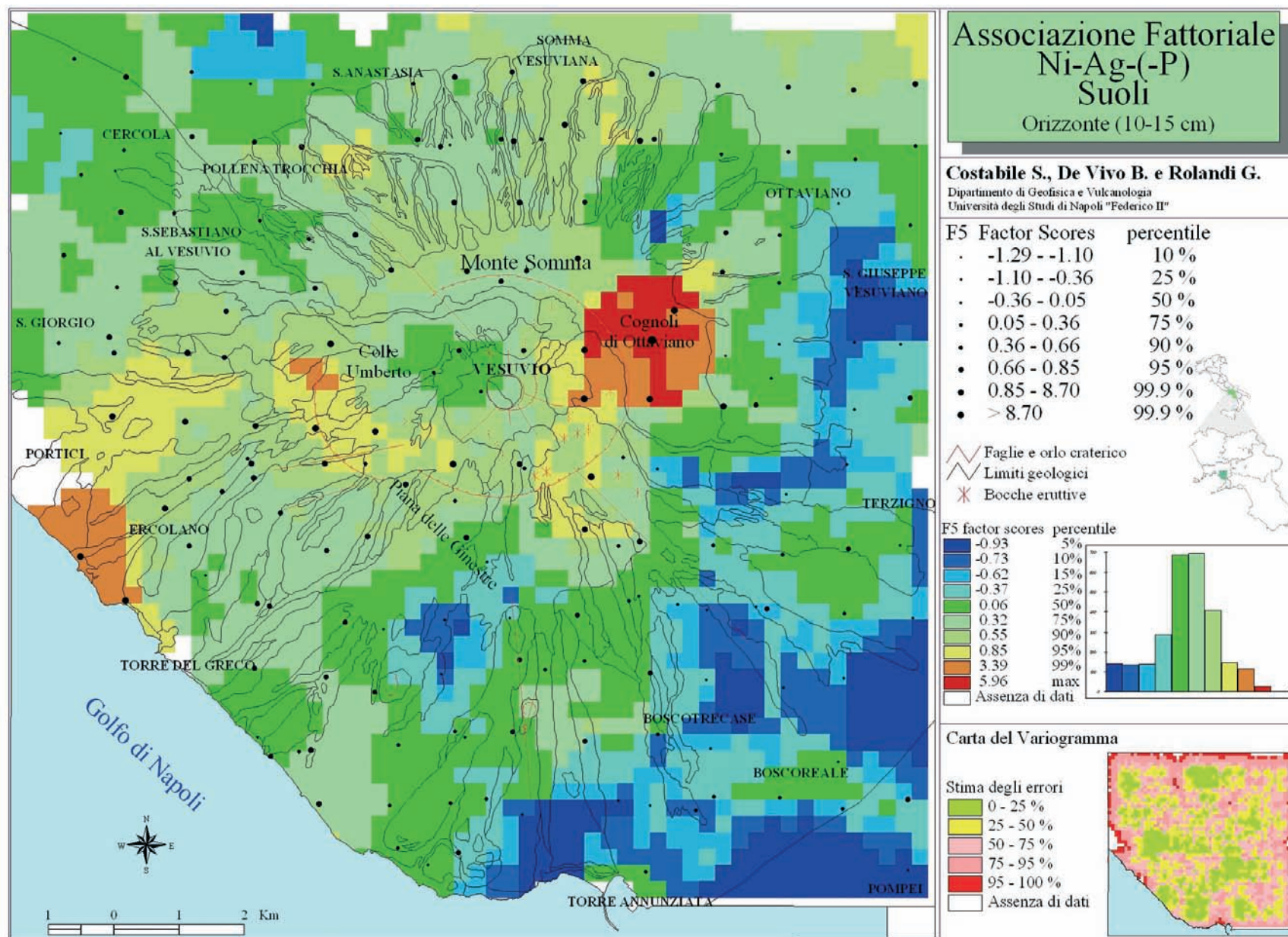
Tav. 68. - Distribuzione dei factor scores dell'associazione fattoriale Th-Ca-Mg-Na-B nei suoli (Orizzonte 10-15 cm).
- Factor scores distribution of Th-Ca-Mg-Na-B association in soils (Horizon 10-15 cm).



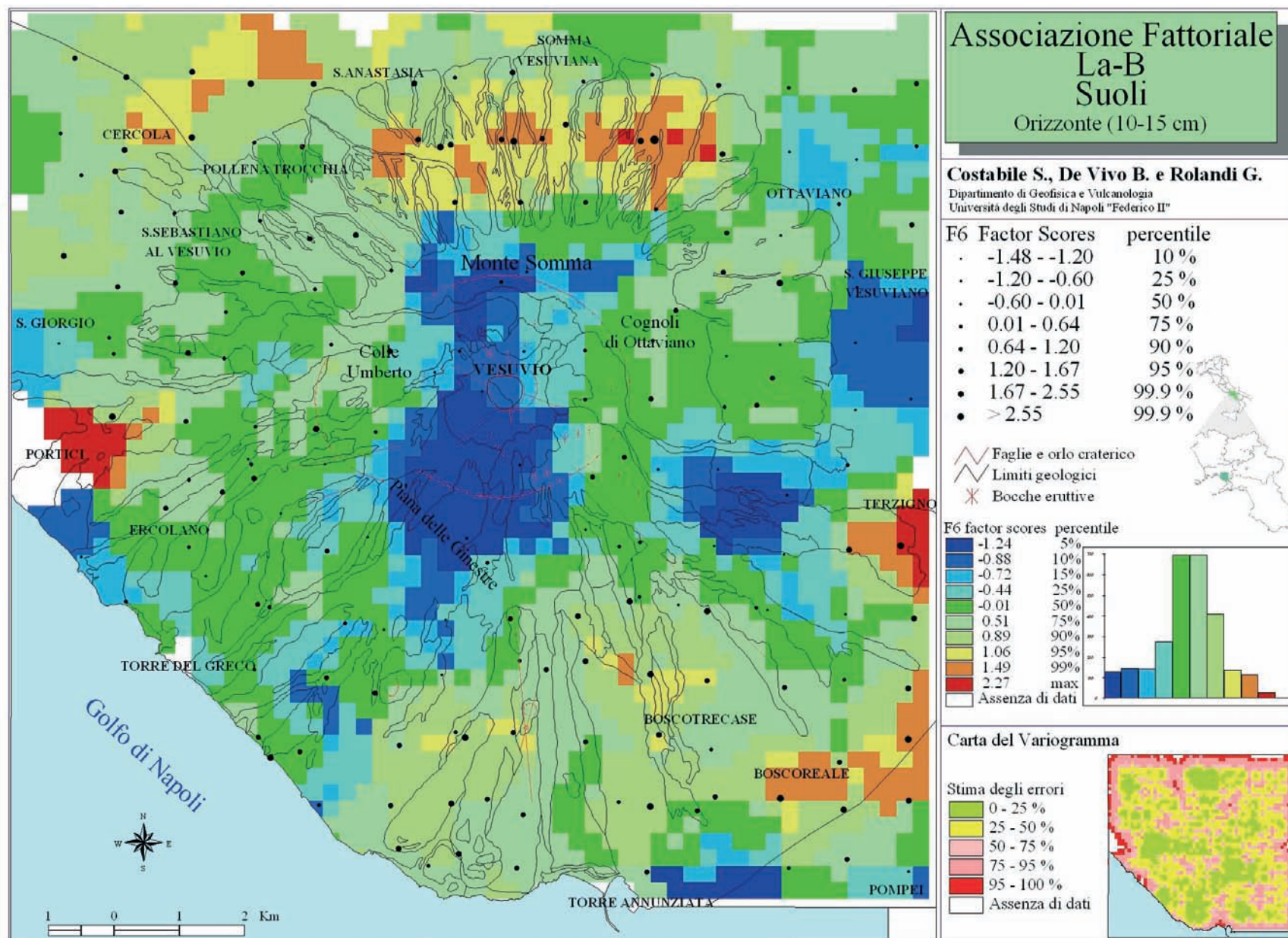
Tav. 69. - Distribuzione dei factor scores dell'associazione fattoriale Zn-Cr-Cu-Pb-Cd-Ni nei suoli (Orizzonte 10-15 cm).
 - Factor scores distribution of Zn-Cr-Cu-Pb-Cd-Ni association in soils (Horizon 10-15 cm).



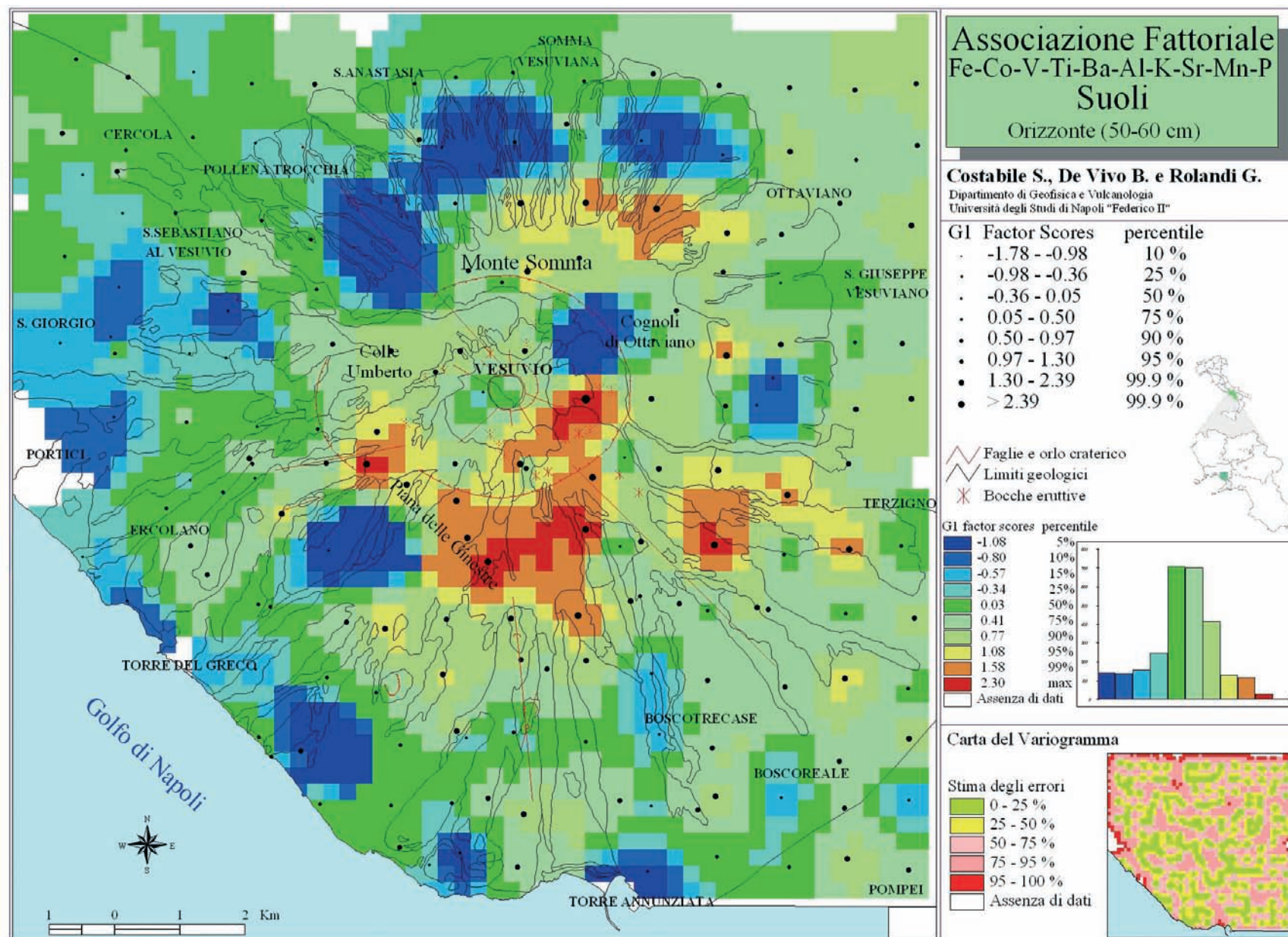
Tav. 70. - Distribuzione dei factor scores dell'associazione fattoriale Hg-Sb-As nei suoli (Orizzonte 10-15 cm).
- Factor scores distribution of Hg-Sb-As association in soils (Horizon 10-15 cm).



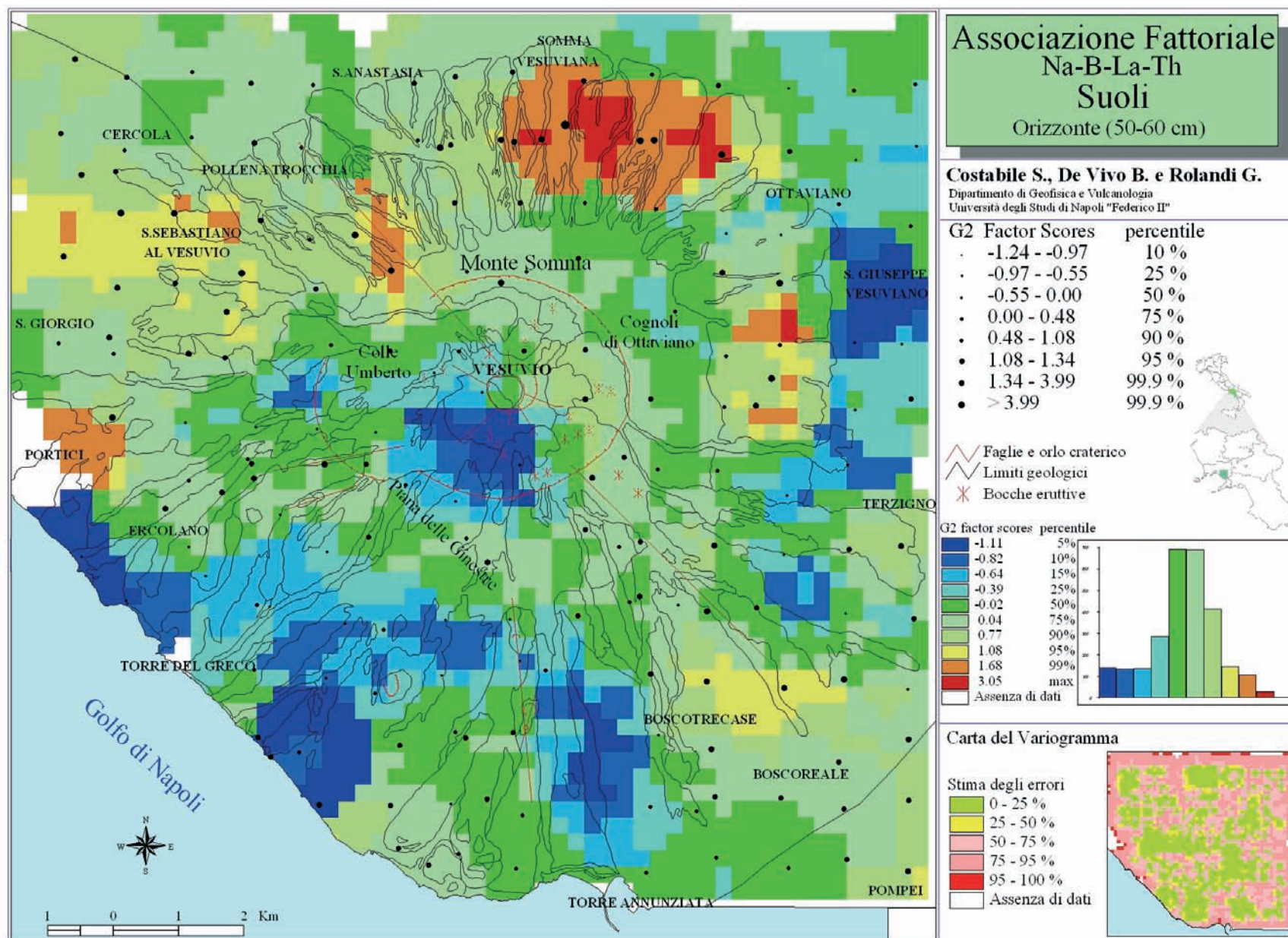
Tav. 71. - Distribuzione dei factor scores dell'associazione fattoriale Ni-Ag(-P) nei suoli (Orizzonte 10-15 cm).
- Factor scores distribution of Ni-Ag(-P) association in soils (Horizon 10-15 cm).



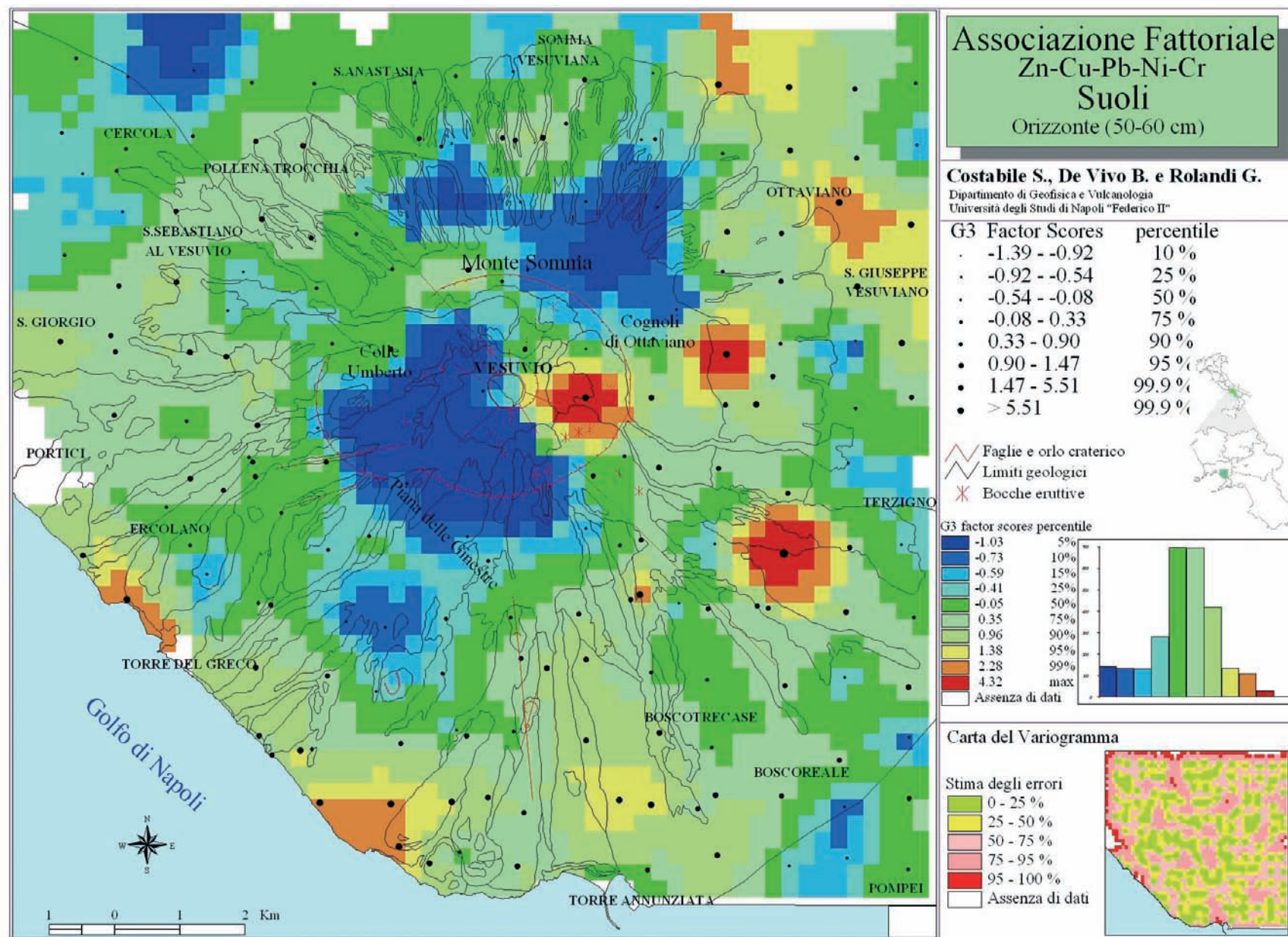
Tav. 72. - Distribuzione dei factor scores dell'associazione fattoriale La-Ba nei suoli (Orizzonte 10-15 cm).
 Tav. 72. - Distribuzione dei factor scores dell'associazione fattoriale La-Ba nei suoli (Orizzonte 10-15 cm).



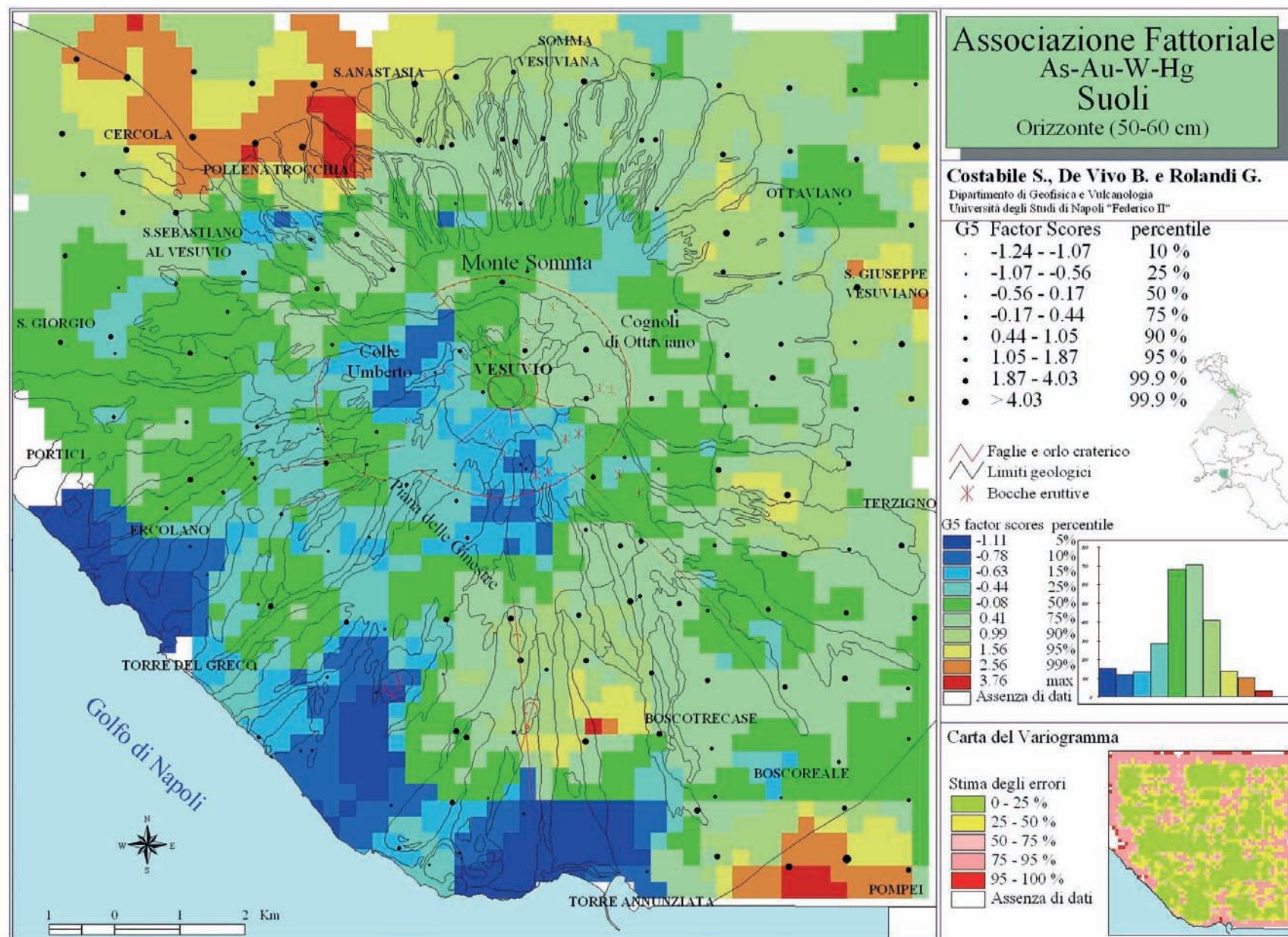
Tav. 73. - Distribuzione dei factor scores dell'associazione fattoriale Fe-Co-V-Ti-Ba-Al-K-Sr-Mn-P nei suoli (Orizzonte 50-60 cm).
 - Factor scores distribution of Fe-Co-V-Ti-Ba-Al-K-Sr-Mn-P association in soils (Horizon 50-60 cm).



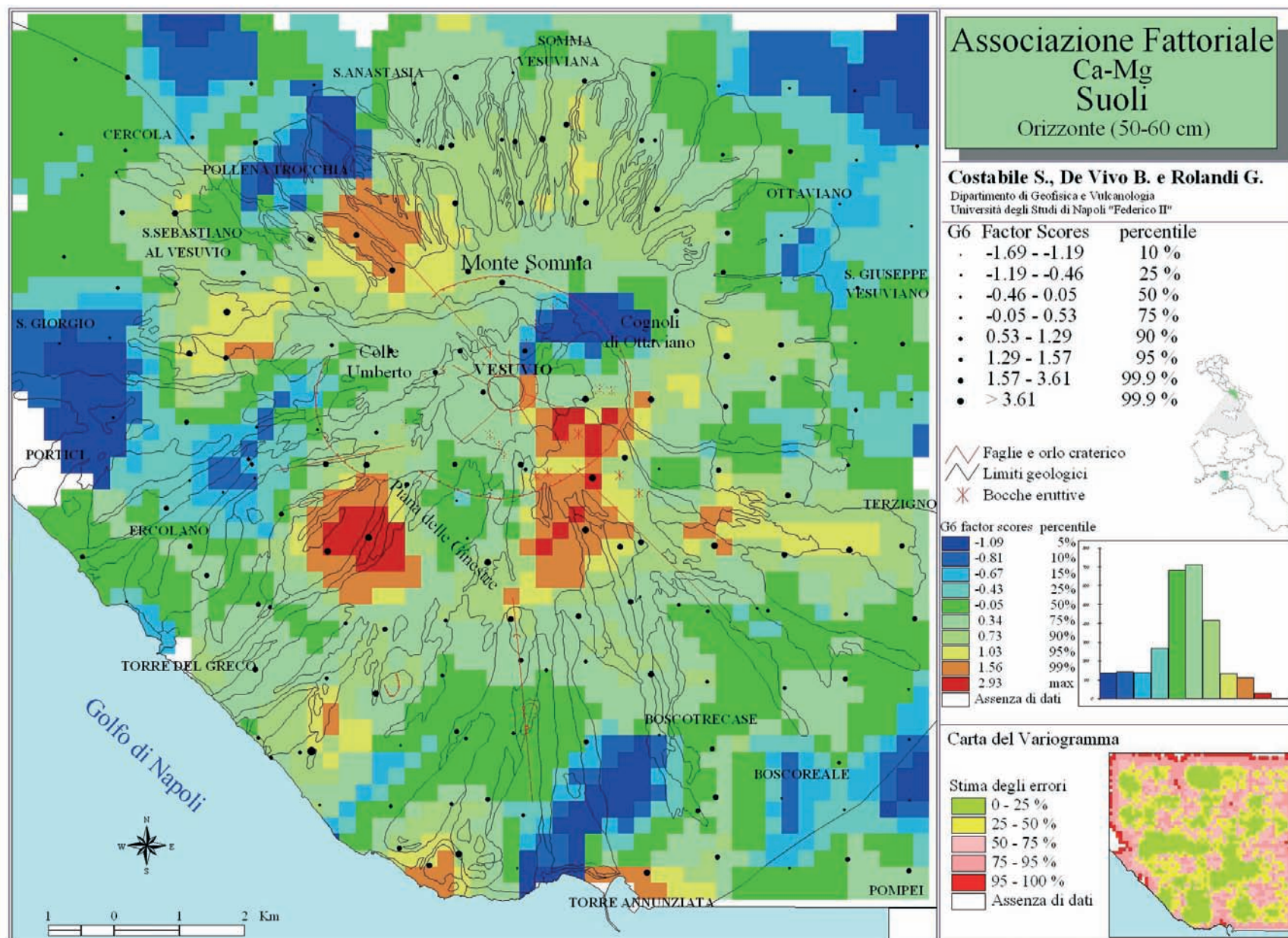
Tav. 74. - Distribuzione dei factor scores dell'associazione fattoriale Na-B-La-Th nei suoli (Orizzonte 50-60 cm).
- Factor scores distribution of Na-B-La-Th association in soils (Horizon 50-60 cm).



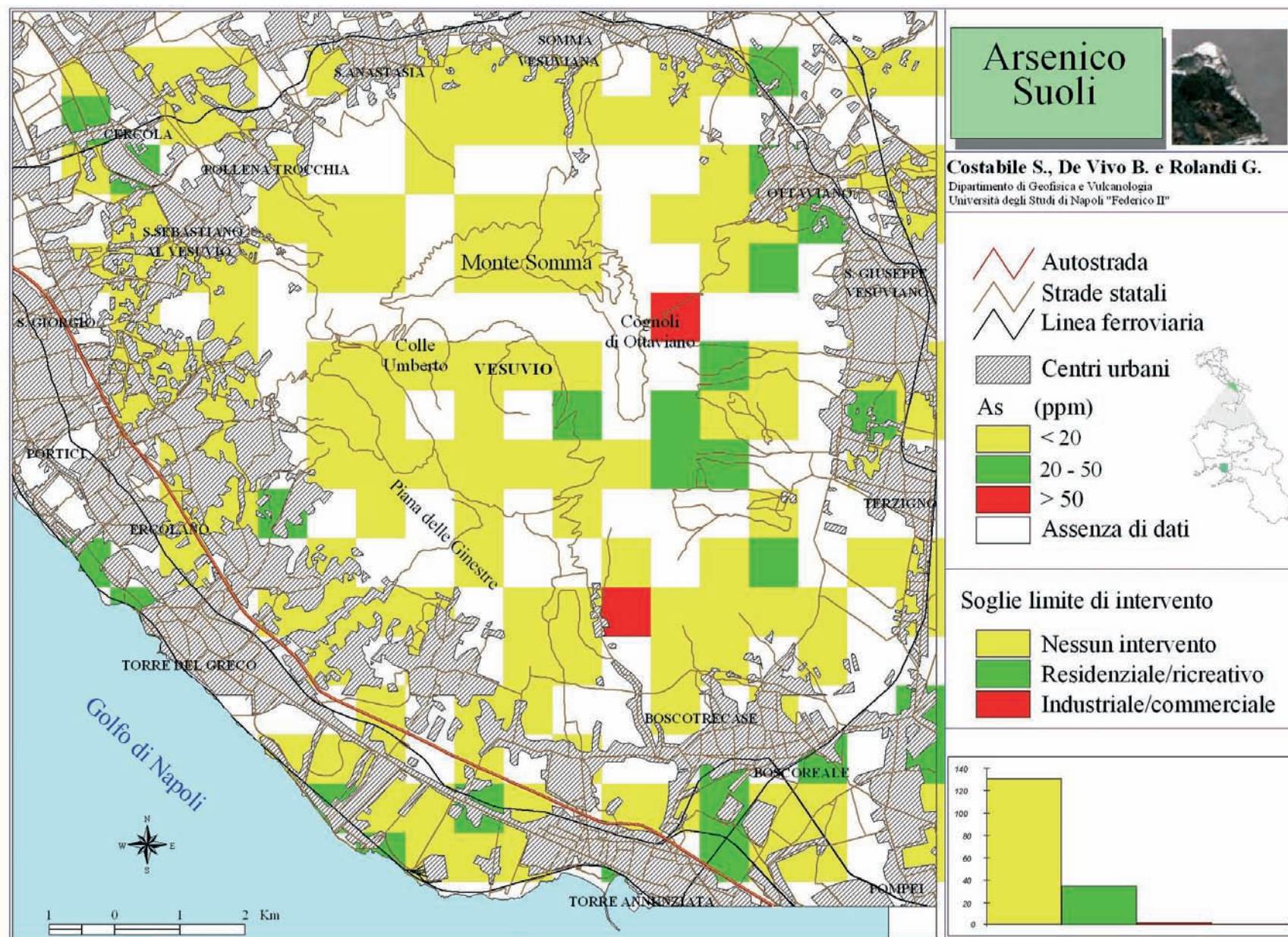
Tav. 75. - Distribuzione dei factor scores dell'associazione fattoriale Zn-Cu-Pb-Ni-Cr nei suoli (Orizzonte 50-60 cm).
 - Factor scores distribution of Zn-Cu-Pb-Ni-Cr association in soils (Horizon 50-60 cm).



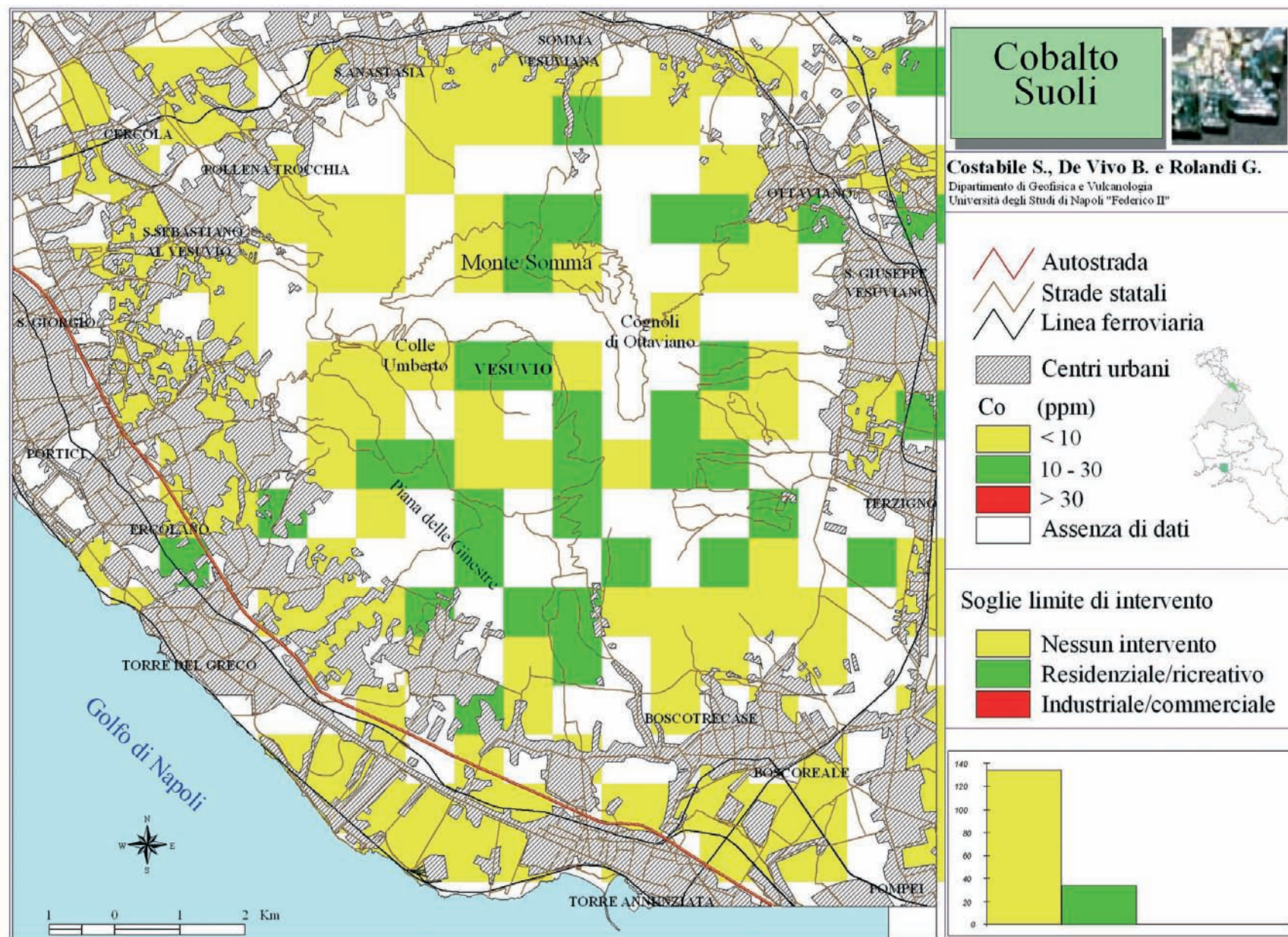
Tav. 77. - Distribuzione dei factor scores dell'associazione fattoriale As-Au-W-Hg nei suoli (Orizzonte 50-60 cm).
- Factor scores distribution of As-Au-W-Hg association in soils (Horizon 50-60 cm).



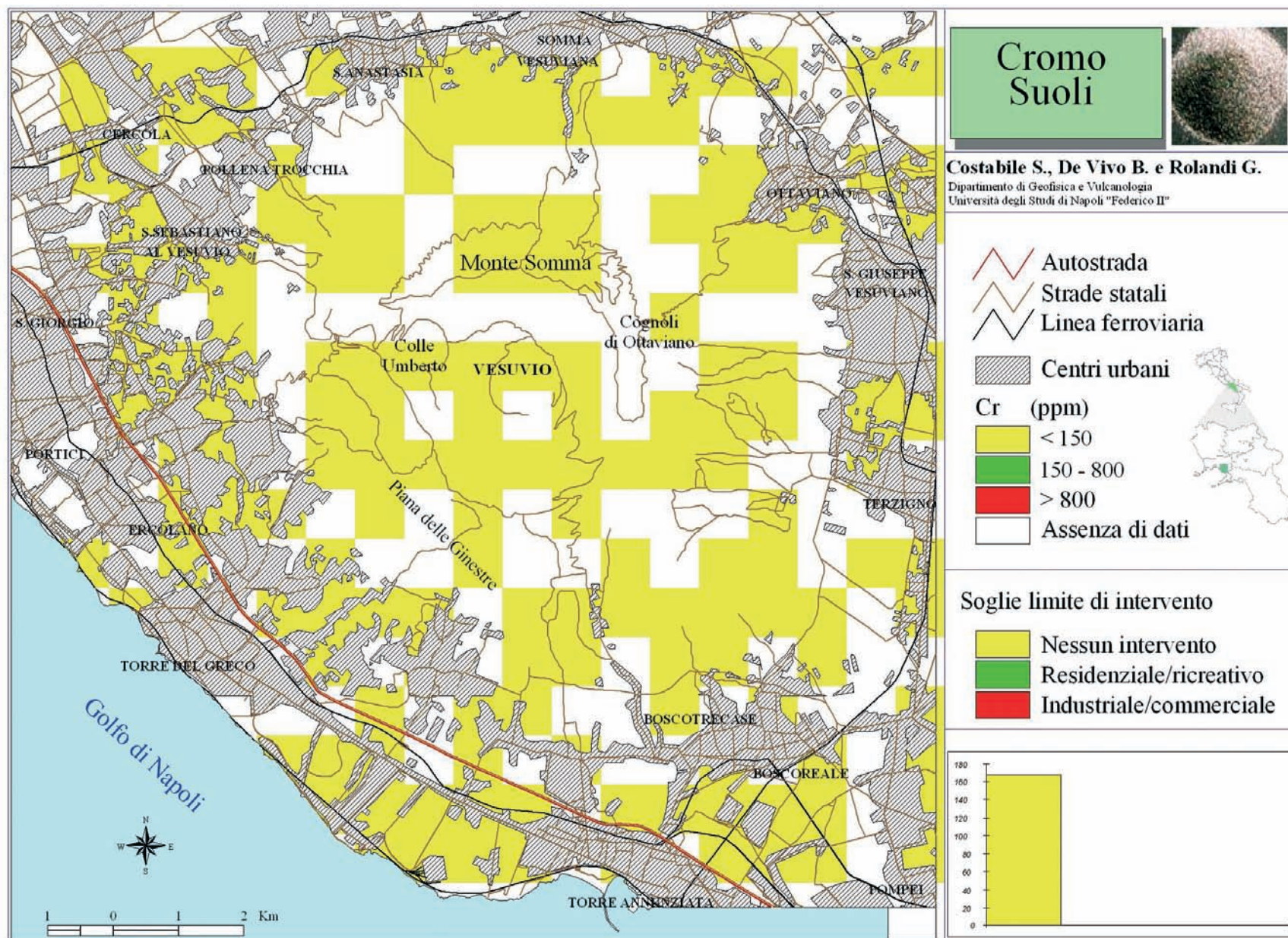
Tav. 78. - Distribuzione dei factor scores dell'associazione fattoriale Ca-Mg nei suoli (Orizzonte 50-60 cm).
- Factor scores distribution of Ca-Mg association in soils (Horizon 50-60 cm).



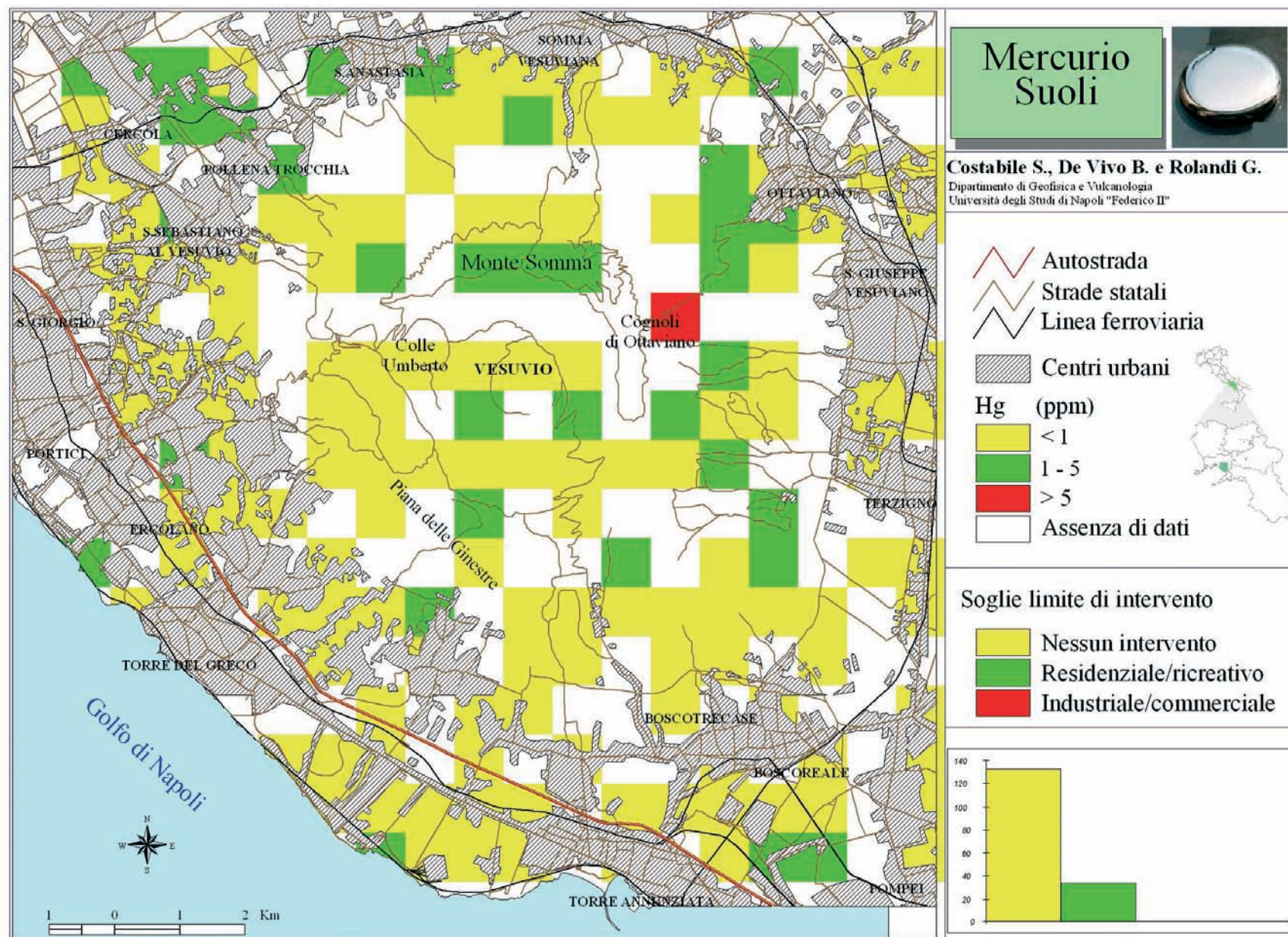
Tav. 80. - Carta di intervento dell'arsenico per l'uso residenziale/ricreativo e industriale/commerciale del territorio.
- Arsenic intervention map for residential/park and industrial commercial land use..



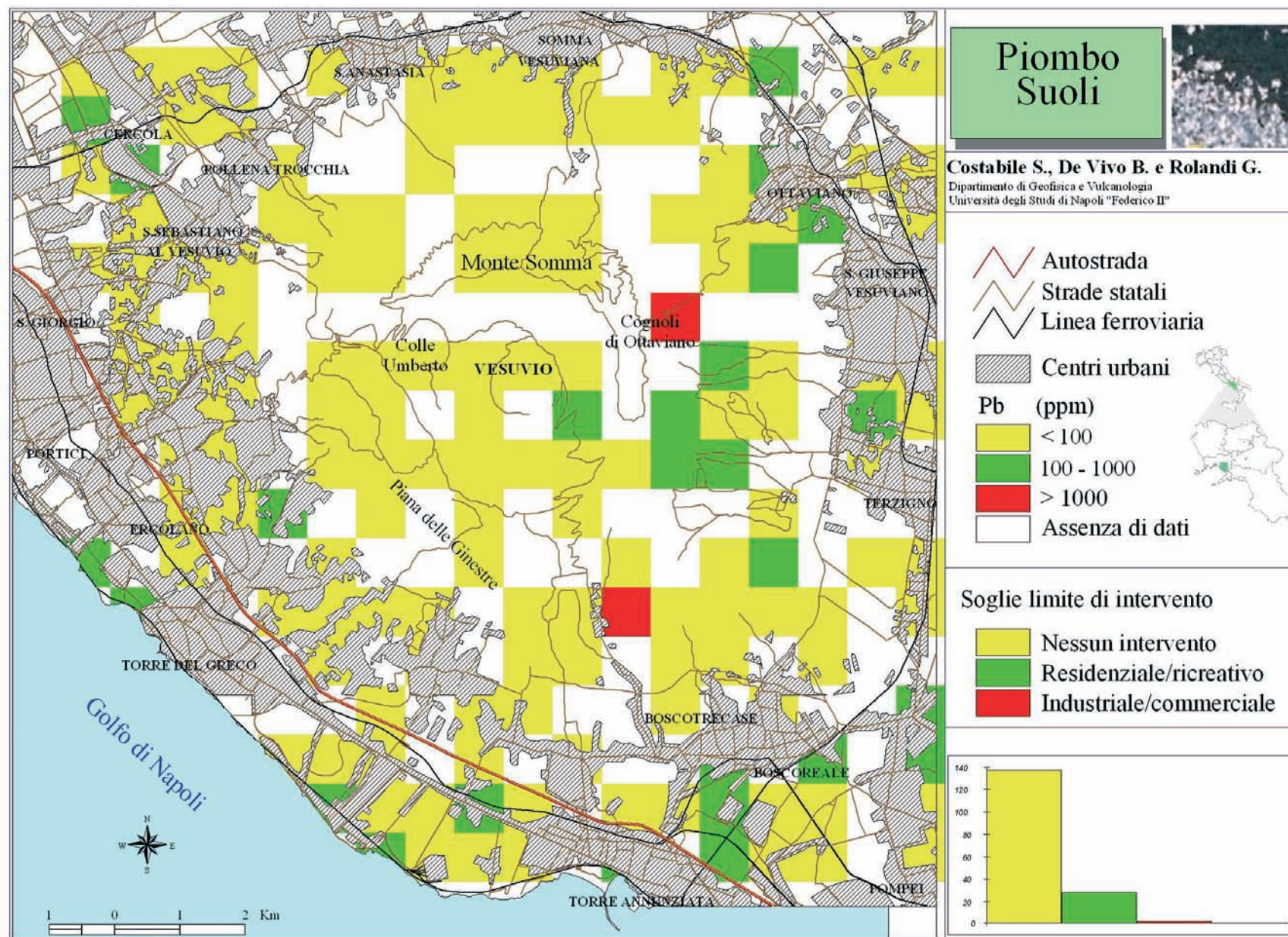
Tav. 82. - Carta di intervento del cobalto per l'uso residenziale/ricreativo e industriale/commerciale del territorio.
- Cobalt intervention map for residential/park and industrial commercial land use..



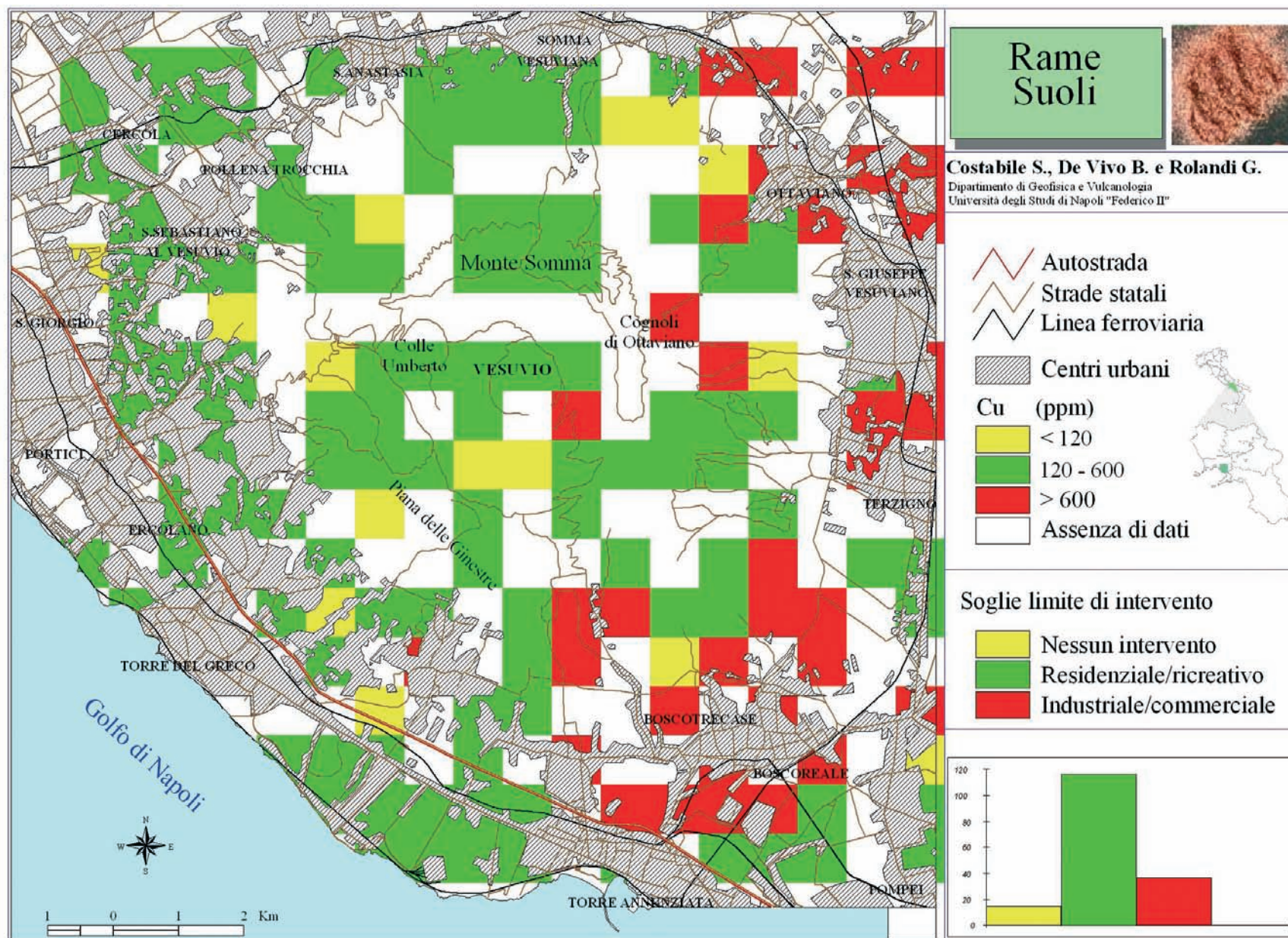
Tav. 83. - Carta di intervento del cromo per l'uso residenziale/ricreativo e industriale/commerciale del territorio.
- Chromium intervention map for residential/park and industrial commercial land use..



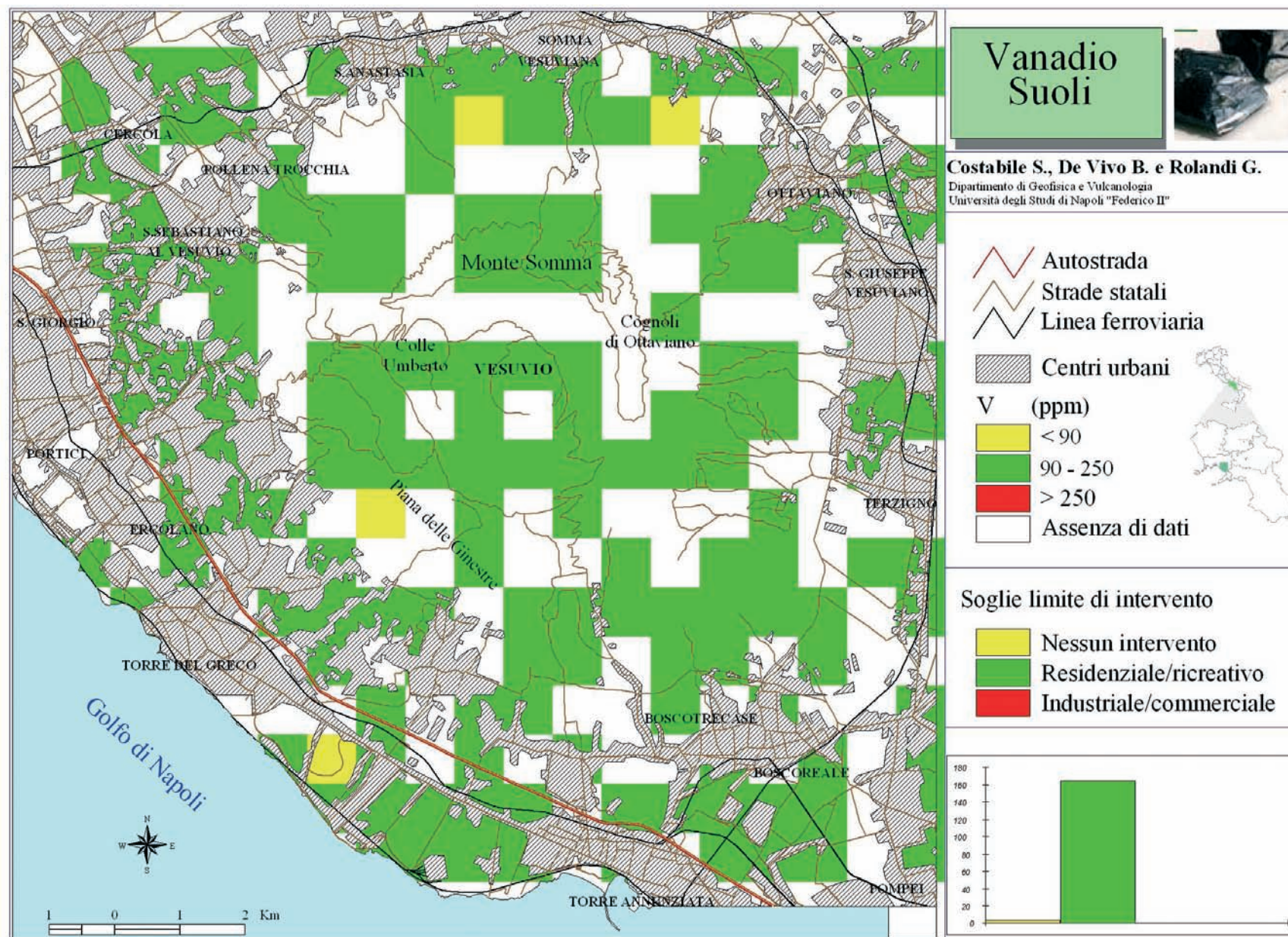
Tav. 84. - Carta di intervento del mercurio per l'uso residenziale/ricreativo e industriale/commerciale del territorio.
- Mercury intervention map for residential/park and industrial commercial land use..



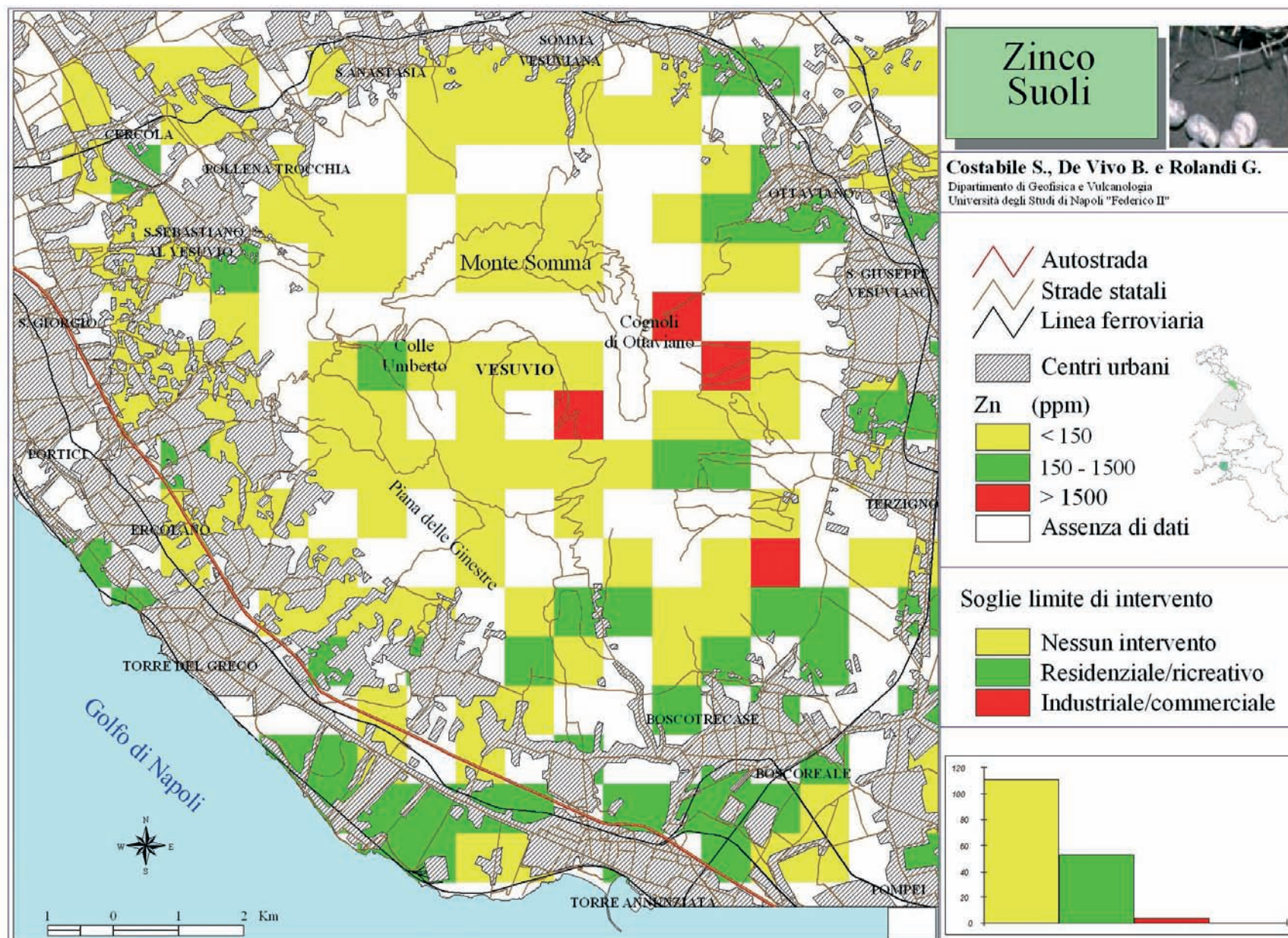
Tav. 86. - Carta di intervento del piombo per l'uso residenziale/ricreativo e industriale/commerciale del territorio.
- Lead intervention map for residential/park and industrial commercial land use..



Tav. 87. - Carta di intervento del rame per l'uso residenziale/ricreativo e industriale/commerciale del territorio.
- Copper intervention map for residential/park and industrial commercial land use..



Tav. 88. - Carta di intervento del vanadio per l'uso residenziale/ricreativo e industriale/commerciale del territorio.
- Vanadium intervention map for residential/park and industrial commercial land use..



Tav. 89. - Carta di intervento dello zinco per l'uso residenziale/ricreativo e industriale/commerciale del territorio.
- Zinc intervention map for residential/park and industrial commercial land use..