

ACKNOWLEDGMENTS

Many thanks to Eni and the Italian Geological Survey for sponsoring the publication. We are particularly indebted to JONATHAN CRAIG, MAURIZIO ORLANDO, GIORGIO GIORGETTA, CIRO PAGANO, UMBERTO VERGINE for Eni E&P, LEONELLO SERVA, DOMENICO TACCHIA and SILVANA FALCETTI for the Italian Geological Survey. ROBERTO GATTI stimulated this volume and RODOLFO CAROSI kindly reviewed the manuscript.

REFERENCES

- ACCORDI B. (1955) - *Le dislocazioni delle cime (Gipffaltungen) delle Dolomiti*. Ann. Univ. Ferrara (9), Sci. geol. paleont. 2: 65-188.
- ALLMENDINGER R.W., BROWN L.D., OLIVER J.E. & KAUFMAN S. (1983) - *COCORP deep seismic profiles across the Wind River mountains, Wyoming*. In: A.W. BALLY (Ed.), *Seismic expression of structural styles*. Amer. Ass. Petrol. Geol., Studies in Geology, v. 15, 3.2.1.29-3.2.1.33 pp.
- ALLMENDINGER R.W. (1998) - *Inverse and Forward numerical modeling of trishear fault-propagation folds*. Tectonics, v. 17: 640-656.
- ANDERSON E.M. (1905) - *The dynamics of faulting*, Transactions of the Edinburgh Geological Society, 8: 387-402, 1905.
- ASSERETO R. et alii (1977) - *The Pb-Zn mineralization in the Triassic of the Dolomites*. Geological History and genetic interpretations. L'industria mineraria, nov.-dic., 367-402.
- BACHMANN G.H. & KOCH K. (1983) - *Alpine Front and Molasse Basin, Bavaria*. In: Seismic expression of structural styles; a picture and work atlas; Volume 3. A-W BALLY (editor), Am. Ass. Petrol. Geol. Studies in Geology, 15: 3.4.1-27-3.4.1-32.
- BADLEY M.E. (1985) - *Practical Seismic Interpretation*, New Jersey, Prentice Hall.
- BALLY A.W. (1984) - *Tectogenèse et sismique réflexion*. Bull. Soc. géol. France, 7: 279-285.
- BALLY A.W., GORDY P.L. & STEWART G.A. (1966) - *Structure, seismic data and orogenic evolution of Southern Canadian Rocky Mountains*. Bull. Canad. Petrol. Geol., 14: 337-381.
- BARBIERI G. (1987) - *Lineamenti tettonici degli Altipiani Trentini e Vicentini tra Folgaria e Asiago (Prealpi Venete)*. Mem. Scienze Geol., 39: 257-264, Padova.
- BECHSTADT T. & BRANDNER R. (1970) - *Das Anis zwischen St.Vigil und dem Holensteintal* (Prager und Olanzer Dolomiten, Südtirol). Beitrage zur Mikrofazies und Stratigraphie von Tirol und Voralberg. (Festb.Geol. Inst., 300-J. Feier Univ. Innsbruck), 9-103.
- BECHSTADT T., BRANDNER R., MOSTLER H. & SCHMIDT K. (1977) - *Aborted rifting in the Triassic of the Eastern and Southern Alps*. N. Jb. Geol. Palaont. Abh., 156, 2: 157-178.
- BERGE T.B. & VEAL S.L. (2005) - *Structure of the Alpine foreland*. Tectonics, 24, TC5011, doi: 10.1029/2003TC001588.
- BERNOULLI D. (1964) - *Zur Geologie des Monte Generoso (Lombardische Alpen)*. Beitr. Geol. Karte Schweiz, Neue Folge, Bern, 134.
- BERNOULLI D., BICHEL M., BOLLI H., HAERING H., HOCHULI P. & KLEBOTH P. (1981) - *The Missaglia Megabed, a catastrophic deposit in the upper Cretaceous Bergamo Flysch (Northern Italy)*. Eclogae Geol. Helv., 74/2, 421-442.
- BERNOULLI D., CARON C., HOMEWOOD P., KALIN O. & VON STUIJVENBERG J. (1979) - *Evolution of continental margins in the Alps*. Schweiz. Mineral. Petrogr. Mitt., 59: 165-170.
- BERNOULLI D., HEITZMANN P. & ZINGG A. (1990) - *Central and southern Alps in southern Switzerland: tectonic evolution and first results of reflection seismics*. Mém. Soc. géol. France 156: 289-302.
- BERNOULLI D. & LEMOINE M. (1980) - *Birth and Early Evolution of the Tethys: the Overall Situation*. Mem. B.R.G.M., 115: 168-179.
- BERNOULLI D. & WINKLER W. (1990) - *Heavy mineral assemblages from Upper Cretaceous South- and Austroalpine flysch sequences (Northern Italy and Southern Switzerland): source terranes and paleotectonic implications*. Eclogae Geol. Helv., 83/2: 287-310.
- BERSEZIO R. & FORNACIARI M. (1987) - *Cretaceous sequences in the Lombardy Basin: stratigraphic outline between the Lakes of Lecce and Iseo*. Mem. Soc. Geol. It., 40: 187-197.
- BERSEZIO R. & FORNACIARI M. (1988) - *Geometria e caratteri stratigrafici della Sequenza Cenomaniana nel Bacino Lombardo (Alpi Meridionali)*. Riv. It. Paleont. Strat., 94/3: 425-454.
- BERSEZIO R. & FORNACIARI M. (1988) - *Tectonic framework of the Lombardy foothills (Southern Alps) between Brianza and Lake Iseo*. Rend. Soc. Geol. It., 11: 75-78.
- BERTOTTI G. (1990) - *The deep structure of the Monte Generoso basin: an extensional basin in the south-Alpine Mesozoic passive continental margin*. Mém. Soc. géol. France 156: 303-308.
- BERTOTTI G., PICOTTI V., BERNOULLI D. & CASTELLARIN A. (1993) - *From rifting to drifting: tectonic evolution of the South-Alpine upper crust from the Triassic to the Early Cretaceous*. Sedimentary Geology, 86: 53-76.
- BIGI G., CASTELLARIN A., CATALANO R., COLI M., COSENTINO D., DAL PIAZ G.V., LENTINI F., PAROTTO M., PATACCA E., PRATURLON A., SALVINI F., SARTORI R., SCANDONE P. & VAI G.B. (1989) - *Synthetic structural-kinematic map of Italy, scale 1:2.000.000*. CNR, Progetto Finalizzato Geodinamica, Roma.
- BLENDINGER W. (1983) - *Anisian sedimentation and tectonics of the M.Pore-M.Cernera area (Dolomites)*. Riv. It. Paleont.Strat., 89: 175-208.
- BLENDINGER W. (1985) - *Middle Triassic strike-slip tectonics and igneous activity of the Dolomites (Southern Alps)*.

- Tectonophysics, **113**: 105-121.
- BLENDINGER W. (1986) - *Isolated stationary carbonate platforms: the Middle Triassic (Ladinian) of the Marmolada area, Dolomites, Italy*. *Sedimentology*, **31**: 1-24.
- BOSELLINI A. (1965) - *Lineamenti strutturali delle Alpi Meridionali durante il Permo-Trias*. *Mem. Museo St. Nat. Ven. Trid.*, **15**, 3: 1-72.
- BOSELLINI A. (1968) - *Paleogeologia pre-anisica delle Dolomiti centro-settentrionali*. *Atti Acc. Naz. Lincei, Rend. Cl. Sc. Fis. Mat. Nat.*, **8,9**: 1-32.
- BOSELLINI A. (1973) - *Modello geodinamico e paleotettonico delle Alpi Meridionali durante il Giurassico-Cretacico*. Sue possibili applicazioni agli Appennini. In: B. ACCORDI (ed) *Moderne vedute sulla geologia dell'Appennino*, *Accad. Naz. Lincei*, **183**: 163-205, Roma.
- BOSELLINI A. (1982) - *Geologia dei passi dolomitici circostanti il Gruppo di Sella*. In: Guida alla Geologia del Sudalpino centro-orientale. Eds. A. CASTELLARIN & G.B. VAI, *Guide Geol. Reg. Soc. Geol. It.*, 267-272.
- BOSELLINI A. (1984) - *Progradation geometries of carbonate platforms: examples from the Triassic of the Dolomites, northern Italy*. In: *Reefs in Time and Space* Ed. by L.F. LAPORTE, *Spec. Publ. Soc. econ. Paleont. Miner.*, **18**: 209-233.
- BOSELLINI A. (1991) - *Geology of the Dolomites, An introduction*. Dolomieu Conference on Carbonate Platforms and Dolomitization, 1-43.
- BOSELLINI A. (1996) - *Geologia delle Dolomiti*. 1-192 pp., Athesia, Bolzano.
- BOSELLINI A. & DOGLIONI C. (1986) - *Inherited structures in the hangingwall of the Valsugana Overthrust (Southern Alps, Northern Italy)*. *Journ. Struct. Geol.*, **8**, 5: 581-583.
- BOSELLINI A. & DOGLIONI C. (1988) - *Progradation Geometries of Triassic Carbonate Platforms of the Dolomites, and their Large-Scale Physical Stratigraphy*. *Am. Assoc. Petrol. Geol. Nice Conference, Guide Book field trip 6*: 1-42.
- BOSELLINI A. & FERRI R. (1980) - *La Formazione di Livinallongo (Buchenstein) nella Valle di S. Lucano (Ladinico inferiore, Dolomiti Bellunesi)*. *Ann. Univ. Ferrara*, **IX**, 6: 63-89.
- BOSELLINI A., GIANOLLA P. & STEFANI M. (2003) - *Geology of the Dolomites*. *Episodes*, **26**, 3: 181-185.
- BOSELLINI A. & HARDIE L.H. (1973) - *Depositional theme of a marginal marine evaporite*. *Sedimentology*, **20**: 5-27.
- BOSELLINI A. & MASETTI D. (1972) - *Ambiente e dinamica deposizionale del calcare del Vajont (Giurassico medio, Prealpi Bellunesi e Friulane)*. *Annali Univ. Ferrara*, **5**, 4: 87-100.
- BOSELLINI A., MASETTI D. & SARTI M. (1981) - *A Jurassic "Tongue of the ocean" infilled with oolitic sands: the Bellano trough, Venetian Alps, Italy*. *Mar. Geol.*, **44**: 59-95.
- BOSELLINI A. & NERI C. (1991) - *The Sella Platform (Upper Triassic, Dolomites, Italy)*. Dolomieu Conference on Carbonate Platforms and Dolomitization. *Guidebook Excursion B*, 1-30.
- BOSELLINI A. & ROSSI D. (1974) - *Triassic carbonate buildups of the Dolomites, Northern Italy*. In: *Reef in Time and Space*, L.F. LAPORTE (Ed), *Spec. publ. Soc. econ. Paleont. Miner.*, **18**: 209-233.
- BOSELLINI A. & STEFANI M. (1991) - *The Rosengarten: A platform-to-basin carbonate section (Middle Triassic, Dolomites, Italy)*. Dolomieu Conference on Carbonate Platforms and Dolomitization. *Guidebook Excursion C*, 1-24.
- BOSTROM R.C. (1971) - *Westward displacement of the lithosphere*. *Nature*, **234**: 536-538.
- BOYER G.R. (1914) - *Étude géologique des environs de Longarone (Alpes Venetiennes)*. *Bull. Soc. Géol. France*, **4**, 13 (1913), **8**: 451-485.
- BOYER S.E. & ELLIOTT D. (1982) - *Thrust systems*. *Amer. Ass. Petrol. Geol.*, **66**: 1196-1230, Tulsa.
- BOZZO G.P. & SEMENZA E. (1973) - *Nuovi elementi tettonici del vallone di Fadalto e loro inquadramento nella struttura del veneto nordorientale*. *Boll. Mus. Civ. St. Nat. Venezia*, *suppl.* **12**: 11-25, Venezia.
- BRACE W. F. & KOHLSTEDT D. L. (1980) - *Limits on lithospheric stress imposed by laboratory experiments*, *J. Geophys. Res.*, **85**: 6248-6252.
- BRACK P. (1981) - *Structures in the south western border of the Adamello intrusion (Alpi Bresciane, Italy)*. *Schweiz. Mineral. Petr. Mitt.*, **61**: 37-50.
- BRACK P. (1983) - *Multiple intrusions-examples from the Adamello batholith (Italy) and their significance on the mechanisms of intrusion*. *Mem. Soc. Geol. It.*, **26**: 145-157.
- BRACK P. (1984) - *Geologie der Intrusiva und Rahmengesteine des SW-Adamello*. *Diss. nr. 7612, ETH, Zürich*.
- BRACK P., MUNDIL R., OBERLI F., MEIER M., & RIEBER H. (1996) - *Biostratigraphic and radiometric age data question the Milankovitch characteristics of the Latemar (Southern Alps, Italy)*. *Geology*, **v. 24**: 371-375 pp.
- BRACK P. & RIEBER H. (1993) - *Towards a better definition of the Anisian/Ladinian boundary: New stratigraphic data and correlations of boundary sections from the Southern Alps*. *Eclogae geol. Helvetiae*, **v. 86/2** 415-527 pp.
- BRAGA G.P. (1970) - *L'assetto tettonico dei dintorni di Possagno (Trevigiano occidentale)*. *Acc. Naz. Lincei*, **48**: 451-455.
- BRAGA G.P., GATTO G.O., GATTO A., GREGNANIN A., MASSARI F., MEDIZZA F., NARDIN M., PERNA G., ROSSI D., SACERDOTI M., SEMENZA E., SOMMAVILLA E., ZIRPOLI G. & ZULIAN T. (1971) - *Note illustrative della Carta Geologica Italiana alla scala 1:100.000, Foglio 22, Feltre*. *Serv. Geol. It.*, 1-149, Roma.
- BRANDNER R. (1984) - *Meeresspiegelschwankungen und Tektonik in der Trias des NW-Tethys*. *Jahrb. Geol. Bundesanst.*, **126**, 4: 435-475.
- BRANDNER R., FLÜGEL E., KOCH R. & YOSE L.A. (1991) - *The Northern Margin of the Schlern/Sciliar. Rosengarten/Catinaccio Platform*. Dolomieu Conference on Carbonate Platforms and Dolomitization. *Guidebook Excursion A*, 1-61.
- BRANDNER R. & MOSTLER H. (1982) - *Der geologische Aufbau des Schlerngebietes und seiner weiteren Umgebung. Exkursions-führer, jahrestagung der Osterreichischen Geologischen Gesellschaft*, 1-43.

- BROGLIO LORIGA C., MASETTI D. & NERI C. (1982) - *La Formazione di Werfen (Scitico) delle Dolomiti occidentali: sedimentologia e biostratigrafia*. Riv. It. Paleont. Strat., **88**,4: 501-598.
- BRUSCA C., GAETANI M., JADOUL F. & VIEL G. (1981) - *Paleogeografia Ladino-Carnica e Metallogenesi del Sudalpino*. Mem. Soc. Geol. It., **22**: 65-82.
- BUSATTA C. (1991) - *Geologia del fianco nordoccidentale del Monte Civetta (Dolomiti centrali)*. Tesi di laurea, 1-125, Ferrara.
- BUXTORF A. (1916) - *Prognosen und Befunde beim Hauensteinbasis und Grenchenbergstunnel und die Bedeutung der letzteren für die Geologie des Juragebirges*. Verhandlungen der Natforschenden Gesellschaft in Basel, **27**: 184-254, Basel.
- BYERLEE J.D. (1978) - *Friction of rocks*. Pure Appl. Geophys., **116**: 615-626.
- CADELL H.M. (1889) - *Experimental researches in mountain building*. Transactions of the Royal Society of Edinburgh, **1**: 337-357.
- CALCAGNILE G. & PANZA G.F. (1980) - *The main characteristics of the lithosphere-asthenosphere system in Italy and surrounding regions*. Pure Applied Geophysics, **119**: 865-879 pp.
- CARMINATI E. & DOGLIONI C. (2004) - *Europe. Mediterranean tectonics*. In Encyclopedia of Geology. Elsevier, 135-146.
- CARMINATI E., DOGLIONI C., ARGNANI A., CARRARA G., DABOVSKI C., DUMURDZANOV N., GAETANI M., GEORGIEV G., MAUFFRET A., NAZAI S., SARTORI R., SCIONTI V., SCROCCA D., SÉRANNE M., TORELLI L. & ZAGORCHEV I. (2004) - *TRANSMED Transect III*, in: W. CAVAZZA, F. ROURE, W. SPAKMAN, G.M. STAMPFLI & P.A. ZIEGLER, (Eds.), *The TRANSMED Atlas. The Mediterranean Region from Crust to Mantle*, Springer-Verlag, Berlin, 141pp.
- CARMINATI E., DOGLIONI C. & BARBA S. (2004) - *Reverse migration of seismicity on thrusts and normal faults*. Earth Sci. Rev., **65**: 195-222.
- CARMINATI E., DOGLIONI C. & SCROCCA D. (2003) - *Apennines subduction-related subsidence of Venice*. Geophys. Res. Lett. **30**, 13, 1717, doi: 10.1029/2003GL017001.
- CARMINATI E., DOGLIONI C. & SCROCCA D. (2004) - *Alps Vs Apennines*. Special Volume of the Italian Geological Society for the IGC 32 Florence-2004, 141-151.
- CARMINATI E., DOGLIONI C. & SCROCCA D. (2005) - *Magnitude and causes of long-term subsidence of the Po Plain and Venetian region. Flooding and Environmental Challenges for Venice and its Lagoon: State of Knowledge*, eds. C. A. FLETCHER & T. SPENCER WITH J. DA MOSTO & P. CAMPOSTRINI. Cambridge University Press.
- CARMINATI E., NEGREDO A.M., VALERA J.L. & DOGLIONI C. (2005) - *Subduction-related intermediate-depth and deep seismicity in Italy: insights from thermal and rheological modelling*. Phys. Earth Planet. Int., **149**: 65-79.
- CARMINATI E. & SANTANTONIO M. (2005) - *Control of differential compaction on the geometry of sediments onlapping paleoescarpments: insights from field geology (Central Apennines, Italy) and numerical modeling*. Geology, **33**: 353-356.
- CARMINATI E. & SILETTO G.B. (1997) - *The effects of brittle plastic transitions in basement involved foreland belts: The central Southern Alps (N. Italy) case*. Tectonophysics, **280**: 107-123.
- CARMINATI E. & SILETTO G.B. (2005) - *The Central Southern Alps (N. Italy) paleoseismic zone: A comparison between field observations and predictions of fault mechanics*. Tectonophysics, **401**: 179-197, 2005.
- CARMINATI E., WORTEL M. J. R., SPAKMAN W. & SABADINI R. (1998) - *The role of slab detachment processes in the opening of the western-central Mediterranean basins: some geological and geophysical evidence*. Earth Planet. Sci. Lett., **160**: 651-665 pp.
- CARTER N.L. & TSENN M.C. (1987) - *Flow properties of continental lithosphere*. Tectonophysics, **136**: 27-63.
- CASATI P., JADOUL F., NICORA A., MARINELLI M., FANTINI SESTINI N. & FOIS E. (1982) - *Geologia della Valle dell'Ansiei e dei Gruppi M. Popera*. Tre Cime di Lavaredo (Dolomiti Orientali). Riv. It. Paleont. Strat., **87**, 3: 371-510.
- CASATI P. & TOMAI M. (1969) - *Il Giurassico ed il Cretacico del versante settentrionale del Vallone Bellunese e del Gruppo del Monte Brandol*. Riv. Ital. Paleont. Strat., **75**, 2: 205-340, Milano.
- CASON C., GRANDESSO P., MASSARI F. & STEFANI C. (1981) - *Depositi deltizi nella molassa cattiano-burdigaliana del bellunese (Alpi Meridionali)*. Mem. Sc. Geol., **34**: 325-354, Padova.
- CASSANO E., ANELLI L., FICHERA R. & CAPPELLI V. (1986) - *Pianura Padana, Interpretazione integrata di dati geofisici e geologici*. Agip, 73° Congresso Soc. Geol. Ital., Roma, 1-27.
- CASTELLARIN A. (1972) - *Evoluzione paleotettonica sinsedimentaria del limite tra "piattaforma veneta" e "bacino lombardo", a nord di Riva del Garda*. Giorn. Geol., **37** (1970), s. 2, 1, 11-212, Bologna.
- CASTELLARIN A. (1979) - *Il problema dei raccorciamenti crostali nel sudalpino*. Rend. Soc. Geol. It., **1** (1978), 21-23, Roma.
- CASTELLARIN A. (1981) - *Carta tettonica delle Alpi Meridionali alla scala 1:200.000*. CNR, pubbl. **441**: 1-220, Tecnoprint, Bologna.
- CASTELLARIN A. (1982) - *Lineamenti ancestrali sudalpini*. In: CASTELLARIN & VAI (Eds.): Guida alla Geologia del Sudalpino centro-orientale. Guide Geol. Reg., Soc. Geol. It., 41-55.
- CASTELLARIN A., LUCCHINI F., ROSSI P.L., SIMBOLI G., BOSELLINI A. & SOMMAVILLA E. (1979) - *Middle-Triassic magmatism in Southern Alps II: A geodynamic model*. Riv. It. Paleont. Strat., **85**: 3-4, 1111-1124.
- CASTELLARIN A., LUCCHINI F., ROSSI P.L., SELLI L. & SIMBOLI G. (1988) - *The Middle Triassic magmatic-tectonic*

- arc development in the Southern Alps*. Tectonophysics, **146**: 79-89.
- CASTELLARIN A., LUCCHINI F., ROSSI P.L., SARTORI R., SIMBOLI G. & SOMMAVILLA E. (1982) - *Note geologiche sulle intrusioni di Predazzo e dei Monzoni*. In: CASTELLARIN & VAI (Eds): Guida alla Geologia del Sudalpino centro-orientale. Guide Geol. Reg., Soc. Geol. It., 211-220.
- CASTELLARIN A., LUCCHINI F., ROSSI P.L., SIMBOLI G., BOSELLINI A. & SOMMAVILLA E. (1979) - *Middle-Triassic magmatism in Southern Alps II: A geodynamic model*. Riv. It. Paleont. Strat., **85**: 3-4, 1111-1124.
- CASTELLARIN A., NICOLICH R., FANTONI R., CANTELLI L., SELLA M. & SELLI L. (2006) - *Structure of the lithosphere beneath the Eastern Alps (southern sector of the TRANSALP transect)*. Tectonophysics **414**: 259-282.
- CASTELLARIN A., ROSSI P.L., SIMBOLI G., SOMMAVILLA E. & DE LUCA A. (1977) - *Dati geologici e petrografici sul Gruppo del Buffaure*. Miner. Petrogr. Acta, **21**: 165-187.
- CASTELLARIN A., SELLI L., PICOTTI V., & CANTELLI L. (1998) - *La tettonica delle Dolomiti nel quadro delle Alpi Meridionali orientali*. Memorie della Società Geologica Italiana, v. **53**, 133-143 pp.
- CASTELLARIN A. & VAI G.B. (1981) - *Importance of Hercynian tectonics within the framework of the Southern Alps*. J. Struct. Geol., **3**, 4: 477-486.
- CASTELLARIN A. & VAI G.B. (1982) - *Introduzione alla geologia strutturale del sudalpino*. In CASTELLARIN & VAI (Eds), Guida alla geologia del Sudalpino centro-orientale. Guide Geol. Reg., Soc. Geol. It., 1-22.
- CASTIGLIONI B. (1931) - *Il Gruppo della Civetta (Alpi Dolomitiche)*. Mem. Ist. Geol. Mineral. Univ. Padova, **9**: 1-83.
- CASTIGLIONI B. (1939) - *Il Gruppo delle Pale di S.Martino e le valli limitrofe (Alpi Dolomitiche)*. Mem. Ist. Geol. R. Univ. Padova, **13**: 1-104.
- CASTIGLIONI B., BOYER G., DAL PIAZ G., LEONARDI P., VENZO S., VIALI V. & ZENARI S. (1941) - *Foglio 23, Belluno, della Carta Geologica delle Tre Venezie, alla scala 1:100.000*. Uff. Idrogr. Mag. Acque, Venezia.
- CATALANO R., D'ARGENIO B. & DOGLIONI C. (1989) - *Triassic and Liassic transensional tectonics and later inversion in Italy*. 28th International Geological Congress, Washington, v. **1**, 251.
- CATALANO R., DOGLIONI C. & MERLINI S. (2001) - *On the Mesozoic Ionian basin*. Geophysical Journal International, **144**: 49-64 pp.
- CATI A., SARTORIO D. & VENTURINI S. (1987) - *Carbonate platforms in the subsurface of the northern Adriatic area*. Mem. Soc. Geol. It., **40**: 295-308.
- CELLA F., FEDI M., FLORIO G. & RAPOLLA A. (1998) - *Gravity modeling of the litho-asthenosphere system in the Central Mediterranean*. Tectonophysics, **287**: 117-138 pp.
- CHANNELL J.E.T. & DOGLIONI C. (1994) - *Early Triassic paleomagnetic data from the Dolomites (Italy)*. Tectonics, **13**, 1: 157-166.
- CHAMBERLIN R.T. (1910) - *The Appalachian folds of central Pennsylvania*. J. Geol., **18**: 228-251.
- CHANNELL J.T.E., DOGLIONI C. & STONER J. (1991) - *New paleomagnetic data from the Southern Alps*. In: IUGG, General Assembly XX, Vienna. Tethyan Paleomagnetism and tectonics.
- CHANNELL J.E.T. & DOGLIONI C. (1994) - *Early Triassic paleomagnetic data from the Dolomites (Italy)*. Tectonics, **13**, 1: 157-166.
- CHANNELL J.T.E., DOGLIONI C. & STONER J. (1992) - *Jurassic and Cretaceous paleomagnetic data from the Southern Alps (Italy)*. Tectonics, **11**, 4: 811-822.
- CHRISTOVA C. & NIKOLOVA S. B. (1993) - *The Aegean region: deep structures and seismological properties*. Geophysical Journal International, **115**: 635-653 pp.
- CITA M.B. & ROSSI D. (1959) - *Prima segnalazione di Aptiano-Albiano nelle Dolomiti*. Rend. Acc. Naz. Lincei, **8**, 6, 8.
- COLACICCHI R. (1960) - *Le dislocazioni delle cime (Gipfelsaltungen) nelle Dolomiti*. Gruppo del Civetta. Mem. Ist. Geol. Mineral. Univ. Padova **22**: 1-49.
- CORTI G., CARMINATI E., MAZZARINI F. & OZIEL GARCIA M. (2005) - *Active strike-slip faulting in El Salvador (Central America)*, Geology, **33**: 989-992.
- CORTI G., CUFFARO M., DOGLIONI C., INNOCENTI F. & MANETTI P. (2006) - *Coexisting geodynamic processes in the Sicily Channel*. In: Y. DILEK & S. PAVLIDES (Eds), Postcollisional tectonics and magmatism in the Mediterranean region and Asia, Geol. Soc. Am. Sp. Paper, **409**: 83-96.
- COSTA V. & DOGLIONI C. (1989) - *Tettonica del Foglio 1:50.000. 063 Belluno*. Note Illustrative della Carta Geologica d'Italia, Serv. Geol. It., Roma, in press.
- COTTON J.T. & KOYI H.A. (2000) - *Modeling of thrust fronts above ductile and frictional detachments: Application to structures in the Salt Range and Potwar Plateau, Pakistan*, GSA Bulletin, **112**: 351-363.
- COUSIN M. (1981) - *Les rapports Alpes-Dinarides. Les confins de l'Italie et de la Yougoslavie*. Soc. Géol. du Nord, **5**, I,1-521, II,1-521.
- CRANE R.C. (1987) - *Geologic interpretation of thrust belts. Alaskan north slope geology*, **2**: book 50, 621-630 pp., Santa Fe.
- CRESPI M., CUFFARO M., DOGLIONI C., GIANNONE F. & RIGUZZI F. (2007) - *Space geodesy validation of the global lithospheric flow*. Geophysical Journal International, **168**: 491-506, doi: 10.1111/j.1365-246X.2006.03226.x.
- CROS P. (1966) - *Age oligocène supérieur d'un poudingue (du Monte Parei) dans le Dolomites centrales italiennes*. C.R. somm. Soc. géol. France **7**: 250-252.
- CROS P. (1974) - *Evolution sédimentologique et paléostrutturale de quelques plate-formes carbonatées biogènes (Trias des Dolomites Italiennes)*. Sciences Terre, **19**: 299-379.
- CROS P. (1978) - *Interprétation des relations entre sédiments continentaux intrakarstiques et molasses littorales Oligo Miocènes des Dolomites centrales Italiennes*. Atti Congr. "Processi Paleocarsici e Neocarsici", Napoli.

- CROWELL J.C. (1974) - *Origin of late Cenozoic basins in southern California*, Special Publication - Society of Economic Paleontologists and Mineralogists, **22**: 190-204.
- CRUCIANI C., CARMINATI E. & DOGLIONI C. (2005) - *Slab dip vs. lithosphere age: no direct function*. Earth Planet. Sci. Lett., **238**: 298-310.
- CUFFARO M., CAPUTO M. & DOGLIONI C. (2004) - *On the sub-rotation of a plate*. Journal of Virtual Explorer, ISSN 1441-8142, **14**, **2**: 1-15.
- DAHLSTROM C.D.A. (1969) - *Balanced cross sections*. Can. J. Earth Sci., **6**: 743-757, 1969.
- DAHLSTROM C.D.A. (1970) - *Structural geology in the eastern margin of the Canadian Rocky Mountains*. Bull. Can. Petrol. Geol., **18**: 332-406.
- D'ALBERTO L., BOZ A. & DOGLIONI C. (1995) - *Structure of the Vette Feltrine (Eastern Southern Alps)*. Memorie di Scienze Geologiche, Padova, **47**: 189-199.
- DAL PIAZ G. (1907) - *Le Alpi Feltrine*. Mem. R. Ist. Veneto Sc. Lett. Arti, 1-176, Venezia.
- DAL PIAZ G. (1912) - *Studi geotettonici sulle Alpi Orientali (Regione tra il Brenta ed il Lago di Santa Croce)*. Mem. Ist. Geol. R. Univ. Padova, **1**: 1-196.
- DAL PIAZ G.V. (1976) - *Alcune riflessioni sulla evoluzione geodinamica alpina delle Alpi*. Rend. Soc. It. Miner. Petr., **XXXII**, 380-385.
- DAL PIAZ G.V., BISTACCHI A. & MASSIRONI M. (2003) - *Geological outline of the Alps*. Episodes, **26**, **3**, 175-180.
- DAL PIAZ G.V. & LOMBARDO B. (1986) - *Early Alpine eclogite metamorphism in the Penninic Monte Rosa*. Gran Paradiso basement nappes of the northwestern Alps, Geol. Soc. Amer. Mem., **164**: 249-265.
- D'AMICO C. (1962) - *La zona cristallina Agordo-Cereda*. Mem. Ist. Geol. Min. Univ. Padova, **23**: 3-77.
- D'AMICO C. (1986) - *Volcanic sequence in Trentino*. Alto Adige. In: AA. VV., Permian and Permian-Triassic boundary in the South-Alpine segment of the Western Tethys. IGCP Project 203. Field Conference proceedings, 1-158.
- DAVIES S.J., DAWERS N.H., MCLEOD A.E. & UNDERHILL J.R. (2000) - *The structural and sedimentological evolution of early synrift successions: the Middle Jurassic Tarbert Formation, North Sea*, Basin Research, **12**: 343-365.
- DAVIS D., SUPPE J. & DAHLEN F.A. (1983) - *Mechanics of fold-and-thrust belts and accretionary wedges*, J. Geophys. Res., **88**: 1153-1172.
- DAVIS G.H. & REYNOLDS S.J. (1996) - *Structural Geology of Rocks and Regions*. New York, John Wiley & Sons, Inc.
- DE CONCINI C., DE FLORENTIIS N., GATTO G.O. & ILLICETO V. (1980) - *Movimenti attuali nelle Alpi orientali rilevati mediante livellazioni ripetute*. Mem. Sc. Geol. Padova, **34**: 53-66.
- DE PAOR D.G. (1988) - *Balanced section in thrust belts; Part 1, Construction*. Am. Assoc. Petrol. Geol. Bull., **72**: 73-90.
- DERCOURT J., GAETANI M., VRIELYNCK B., BARRIER E., BIJU-DUVAL B., BRUNET M.F., CADET J.P., CRASQUIN S. & SANDULESCU M. (2000) - *Peri-Tethys palaeogeographical atlas*. 24 maps and explanatory notes: I-XX. CCGM/CGMW, Paris, 269 pp.
- DE SITTER L.U. & DE SITTER KOOMANS C.M. (1949) - *The geology of the Bergamasc Alps, Lombardia, Italy*. Leidse Geol. Mededl., **14** B, 1-257, Leiden.
- DE VOOGD B., TRUFFERT C., CHAMOT-ROOKE N., HUCHON P., LALLEMANT S. & LE PICHON X. (1992) - *Two-ship deep seismic soundings in the basins of the Eastern Mediterranean Sea (Pasiphae cruise)*. Geophysical Journal International, **109**: 536-552 pp.
- DE ZANCHE V. & FARABEGOLI E. (1981) - *Scythian tectonics in the Southern Alps: Recoaro Phase*. Geol. Palaeont. Mitt. Innsbruck, **10**, **10**: 289-304.
- DE ZANCHE V. & MIETTO P. (1984) - *Testimonianze di attività tettonica tardotriassica nelle Prealpi Vicentine*. Riv. It. Paleont. Strat., **89**, **3**: 335-342.
- DI NAPOLI ALLIATA E. & PROTO DECIMA F. (1968) - *Segnalazione di una lacuna stratigrafica tra il "Flysch superiore" e la "Glaucônia cattiana" del Vallone Bellunese*. Boll. Soc. Geol. It., **87**: 233-234, Roma.
- DOGLIONI C. (1982) - *Tettonica Triassica nella Valle di Livinallongo (Dolomiti centrali)*. Ann. Univ. Ferrara, sez. IX, Scienze Geol. Paleont., v. VIII, n.1, 1-21.
- DOGLIONI C. (1983) - *Duomo medio-triassico nelle Dolomiti*. Rend. S.G.I., **6**: 13-16.
- DOGLIONI C. (1984) - *Triassic diapiric structures in the central Dolomites (Northern Italy)*. Eclogae Geol. Helv., **77/2**: 261-285.
- DOGLIONI C. (1984) - *Tettonica triassica transpressiva nelle Dolomiti*. Giornale di Geologia, **46**, **2**: 47-60, Bologna.
- DOGLIONI C. (1985) - *Geometrie lungo l'asse di una kink-band centimetrica*. Boll.S.G.I., **104**, **1**: 81-86.
- DOGLIONI C. (1985) - *The overthrusts in the Dolomites: ramp-flat systems*. Eclogae Geol. Helv., **78/2**: 335-350.
- DOGLIONI C. (1987) - *Tectonics of the Dolomites (Southern Alps, Northern Italy)*. Journ. Struct. Geol., **9**, **2**: 181-193.
- DOGLIONI C. (1988) - *Examples of strike-slip tectonics on platform-basin margins*. Tectonophysics, **156**: 293-302.
- DOGLIONI C. (1990) - *Anatomy of an overthrust*. Annales Tectonicae. v. IV/1: 68-82.
- DOGLIONI C. (1990) - *Thrust tectonics examples from the Venetian Alps*. Studi Geologici Camerti, vol. spec. 117-129.
- DOGLIONI C. (1990) - *The global tectonic pattern*. Journal of Geodynamics, **12**, **1**: 21-38.
- DOGLIONI C. (1991) - *The Venetian Alps thrust belt*. In: K.McCLAY (Ed): Thrust Tectonics, Chapman and Hill, London.
- DOGLIONI C. (1991) - *Una interpretazione della tettonica globale*. Le Scienze, **270**: 32-42, febbraio.
- DOGLIONI C. 1991) - *A proposal for the kinematic modelling of W-dipping subductions. possible applications to the Tyrrhenian-Apennines system*. Terra Nova, **3**, **4**: 423-434.
- DOGLIONI C. (1992) - *Relationships between Mesozoic extensio-*

- nal tectonics, stratigraphy and Alpine inversion in the Southern Alps. Eclogae Geologicae Helveticae*, **85**, 1: 105-126.
- DOGLIONI C. (1992) - *The Venetian Alps thrust belt*. In: K.R. McCLAY (Ed): *Thrust Tectonics*, Chapman and Hall, 319-324, London.
- DOGLIONI C. (1992) - *Escursione nel Sudalpino Orientale (Dolomiti e Prealpi Venete)*. Agip Adde, 1-118.
- DOGLIONI C. (1992) - *Main differences between thrust belts*. *Terra Nova*, **4**, 2: 152-164.
- DOGLIONI C. (1993) - *Geological evidence for a global tectonic polarity*. *Journal of the Geological Society, London*, **150**: 991-1002.
- DOGLIONI C. (1993) - *Some remarks on the origin of foredeeps*. *Tectonophysics*, v. **228**: 1-2, 1-20 pp.
- DOGLIONI C. (1994) - *Foredeeps versus subduction zones*. *Geology*, **22**, 3: 271-274.
- DOGLIONI C. (1995) - *Geological remarks on the relationships between extension and convergent geodynamic settings*. *Tectonophysics*, **252**: 1-4, 253-267.
- DOGLIONI C., AGOSTINI S., CRESPI M., INNOCENTI F., MANETTI P., RIGUZZI F. & SAVASCIN Y. (2002) - *On the extension in western Anatolia and the Aegean sea*. *Journal Virtual Explorer*, **7**: 117-131.
- DOGLIONI C. & BOSELLINI A. (1987) - *Eoalpine and Mesoalpine tectonics in the Southern Alps*. *Geol. Rundschau*, **76/3**: 735-754.
- DOGLIONI C. & BOSELLINI A. (1989) - *Platform break. downlap planes relationship in prograding carbonate platforms: a tool for the reconstruction of basin evolution*. *Boll. Soc. Geol. It.*, **108**, 1: 175-182.
- DOGLIONI C., BOSELLINI A. & VAIL P.R. (1989a) - *Stratal patterns: classification and examples from the Dolomites*. *Basin Research*, **2**: 83-95.
- DOGLIONI C. & CARMINATI E. (2002) - *The effects of four subductions in NE Italy*. *Transalp Conference, Mem. Scienze Geol.*, **54**: 1-4.
- DOGLIONI C., CARMINATI E. & BONATTI E. (2003) - *Rift asymmetry and continental uplift*. *Tectonics*, **22**, 3: 1024, doi:10.1029/2002TC001459.
- DOGLIONI C., CARMINATI E. & CUFFARO M. (2006) - *Simple kinematics of subduction zones*. *Int. Geol. Rev.*, **48**, 6: 479-493.
- DOGLIONI C., CARMINATI E., CUFFARO M. & SCROCCA D. (2007) - *Subduction kinematics and dynamic constraints*. *Earth Science Reviews*, **83**: 125-175.
- DOGLIONI C., D'AGOSTINO N. & MARIOTTI G. (1998) - *Normal faulting versus regional subsidence and sedimentation rate*. *Mar. Petrol. Geol.*, **15**: 737-750.
- DOGLIONI C. & FLORES G. (1997) - *Italy*. In: MOORES & FAIRBRIDGE (Eds), *Encyclopedia of European and Asian Regional Geology*. CHAPMAN & HALL, 414-435.
- DOGLIONI C. & GOLDHAMMER R.K. (1988) - *Compaction-induced Subsidence in a margin of a carbonate platform*. *Basin Research*, **1/4**: 237-246.
- DOGLIONI C., GUEGUEN E., SABAT F. & FERNANDEZ M. (1997) - *The western Mediterranean extensional basins and the Alpine orogen*. *Terra Nova*, **9**, 3: 109-112.
- DOGLIONI C., GUEGUEN E., HARABAGLIA P. & MONGELLI F. (1999) - *On the origin of W-directed subduction zones and applications to the western Mediterranean*. *Geol. Soc. Sp. Publ.*, v. **156**: 541-561 pp.
- DOGLIONI C., HARABAGLIA P., MERLINI S., MONGELLI F., PECCERILLO A. & PIROMALLO C. (1999) - *Orogens and slabs vs their direction of subduction*. *Earth Science Reviews*, **45**: 167-208.
- DOGLIONI C., MASETTI D. & NERI C. (1989b) - *Late Carnian extensional tectonics in the Dolomites*. *Rendiconti Società Geologica Italiana*, **14**: 43-48.
- DOGLIONI C., MERLINI S. & CANTARELLA G. (1999) - *Foredeep geometries at the front of the Apennines in the Ionian sea (central Mediterranean)*. *Earth and Planetary Science Letters*, **168**, 3-4: 243-254.
- DOGLIONI C., MONGELLI F. & PIALI G.P. (1998) - *Boudinage of the Alpine belt in the Apenninic back-arc*. *Mem. Soc. Geol. It.*, **52**: 457-468.
- DOGLIONI C., MORETTI I. & ROURE F. (1990) - *Basal lithospheric detachment, eastward mantle flow and Mediterranean Geodynamics: a discussion*. *Journal of Geodynamics*, **13**, 1: 47-65.
- DOGLIONI C. & NERI C. (1988) - *Anisian tectonics in the Passo Rolle Area*. *Rend. S.G.I.*, **11**: 197-204.
- DOGLIONI C. & PROSSER G. (1997) - *Fold uplift versus regional subsidence and sedimentation rate*. *Marine and Pet. Geology*, **14**, 2: 179-190.
- DOGLIONI C. & SABADINI R. (2003) - *Mantle dynamics and plate kinematics*. In *Encyclopedia of Life Support Systems (EOLSS)*, UNESCO, Eolss Publishers, Oxford, <http://www.eolss.net>.
- DOGLIONI C. & SORPAES C. (1990) - *Polyphase deformation in the Col Bechei area (Dolomites-Northern Italy)*. *Eclogae Geol. Helv.*, **83/3**: 701-710.
- DURAND B., JOLIVET J., HORVÁTH F. & SÉRANNE M. (1999) - *The Mediterranean Basins: Tertiary extension within the Alpine orogen*. *Geological Society of London, Special Publication*, **156**: 1-584 pp.
- EGENHOFF E., PETERHANSEL A., BECHSTADT T., ZUHLKE R. & GROTSCH J. (1999) - *Facies architecture of an isolated carbonate platform: tracing the cycles of the Latemar (Middle Triassic, northern Italy)*. *Sedimentology*, **46**: 893-912.
- ENGELDER T. (1999) - *Transitional-tensile fracture propagation: a status report*, *J. Struct. Geol.*, **21**: 1049-1055.
- ERSLEV E.A. (1991) - *Trishear fault-propagation folding*. *Geology*, **19**: 617-620.
- FABIANI R. (1915) - *Il Paleogene nel Veneto*. *Mem. Ist. Geol. R. Univ. Padova*, **3**: 1-336, Padova.
- FANTONI R. & SCOTTI P. (2003) - *Thermal record of the Mesozoic extensional tectonics in the Southern Alps*. *Atti Ticinesi Sc. Terra*, **SS9**, 96-101.
- FARABEGOLI et alii (1976) - *Risultati preliminari sull'Anisico della Conca di Agordo e dell'Alta Val di Zoldo (Dolomiti Sudorientali)*. *Boll. Soc. Geol. It.*, **95**: 659-703.
- FERASIN F. (1958) - *Il "Complesso di scogliera" cretaceo del*

- Veneto centro-orientale. Mem. Ist. Geol. Miner. Univ. Padova, 21: 1-54, Padova.
- FOIS E. (1982) - *The Sass da Putia carbonate buildup (western Dolomites): biofacies succession and margin development during the Ladinian*. Riv. It. Paleont. Strat., 87, 4: 565-598.
- FOIS E. & GAETANI M. (1981) - *The northern margin of the Civetta buildup. Evolution during the Ladinian and the Carnian*. Riv. It. Paleont. Strat., 86, 3: 469-542.
- FORCELLA F. (1988) - *Assetto strutturale delle Orobie orientali tra la Val Seriana e la Val Camonica*. Rend. Soc. Geol. It., 11: 269-278.
- FORCELLA F., FERRARI L., TIBALDI A. & ZANCHI A. (1990) - *Tettonica a thrusts nelle Orobie Orientali*. Field trip B4 of the 75° Congress of the "Società Geologica Italiana".
- FORT X., BRUN J.P. & CHAUVEL F. (2004) - *Salt tectonics on the Angolan margin, synsedimentary deformation processes*. Am. Assoc. Petrol. Geol. Bull., 88: 1523-1544.
- FRANCIOSI R. & VIGNOLO A. (2002) - *Northern Adriatic foreland - A promising setting for the Southalpine Mid-Triassic petroleum system*. EAGE, 64th Conference & Exhibition, Florence, Italy, 27-30 May, H-25.
- FRIZON DE LAMOTTE D., SAINT BEZAR B., BRACENE R. & MERCIER E. (2000) - *The two main steps of the Atlas building and geodynamics of the western Mediterranean*. Tectonics, 19, 4: 740-761 pp.
- FUGANTI A. (1964) - *Le "pulsazioni tettoniche" turoniane nel Trentino occidentale (Alpi orientali)*. St. Trent. Sci. Nat., 41: 138-158.
- FURLANI M. (1909) - *Zur Tektonik der Sellagruppe in Gröden*. Mitt. geol. Ges. Wien 2: 445-461.
- GAETANI M. (1979) - *Field-Guide Book, Riccardo Assereto and Giulio Pisa Symposium on Triassic stratigraphy in Southern Alps, Bergamo, Italy*. Univ. Milano, 1-73.
- GAETANI M., DERCOURT J. & VRIELYNCK B. (2003) - *The Peri-Tethys Programme: achievements and results*. Episodes, 26, 2: 79-93.
- GAETANI M., FOIS E., JADOUL F. & NICORA A. (1981) - *Nature and evolution of Middle-Triassic carbonate buildups in the Dolomites (Italy)*. Mar. Geol. 44: 25-57.
- GAETANI M. & JADOUL F. (1979) - *The structure of the Bergamasc Alps*. Rend. Acc. Naz. Lincei, 65: 411-416.
- GARZANTI E. (1985) - *Petrography and diagenesis of Upper Triassic volcanic arenites (S. Giovanni Bianco, Gorno & Val Sabbia Formations, Bergamasc Alps)*. Boll. Soc. Geol. It., 104, 1: 3-20.
- GARZANTI E., DOGLIONI C., VEZZOLI G. & ANDÒ S. (2007) - *Orogenic Belts & Orogenic Sediment Provenances*. J. Geol., 115: 315-334.
- GAWTHORPE R.L. & LEEDER M. R. (2000) - *Tectono-sedimentary evolution of active extensional basins*, Basin Research, 12: 195-218.
- GEISER P.A. (1988) - *Mechanisms of thrust propagation: some examples and implications for the analysis of overthrust terranes*. J. struct. Geol. 10/8: 829-845.
- GELATI R., CASCONI A. & PAGGI L. (1982) - *Le unità stratigrafiche aptiano-maastrichtiane delle Prealpi Bergamasche*. Riv. It. Paleont. Strat., 74, 1: 63-70.
- GELATI R., NAPOLITANO A. & VALDISTURLO A. (1988) - *La "Gonfolite Lombarda": stratigrafia e significato nell'evoluzione del margine sudalpino*. Riv. It. Paleont. Strat., 94/2: 285-332.
- GIANOLLA P., DE ZANCHE V. & MIETTO P. (1998) - *Triassic Sequence Stratigraphy in the Southern Alps. Definition of sequences and basin evolution*. in: P.C. DE GRACIANSCKY, J. HARDENBOL, T. JACQUIN, P.R. VAIL & D. ULMER-SCHOLLE (Eds.): Mesozoic-Cenozoic Sequence Stratigraphy of European Basins: SEPM Special Publication n°60, 723-751 pp.
- GIANOLLA P., RAGAZZI E. & ROGGI G. (1998) - *Upper Triassic amber from the Dolomites (Northern Italy). A paleoclimatic indicator?*: Rivista Italiana di Paleontologia e Stratigrafia, v. 104: 381-390 pp.
- GIBBS A.D. (1984) - *Structural evolution of extensional basin margins*, J. geol. Soc. Lond., 141: 609-620.
- GIBBS A.D. (1990) - *Linked fault families in basin formation*, Journal of Structural Geology, 12: 795-803.
- GNACCOLINI M. (1967) - *Il Flysch dell'Alpago*. Riv. It. Paleont., 73, 3: 889-906, Milano.
- GNACCOLINI M. (1968) - *Caratteristiche sedimentologiche del Flysch del Vallone Bellunese*. Riv. Ital. Paleont., 74, 1: 63-70, Milano.
- GNACCOLINI M. & JADOUL F. (1990) - *Carbonate platform, lagoon and delta "high frequency" cycles from the Carnian of Lombardy (Southern Alps, Italy)*. Sedimentary Geology, 67: 143-159.
- GOETZE C. & EVANS B. (1979) - *Stress and temperature in the bending lithosphere as constrained by experimental rock mechanics*. Geophys. J. R. Astron. Soc., 59: 463-478.
- GOLDHAMMER R.K. (1987) - *Platform Carbonate Cycles, Middle Triassic of Northern Italy: The Interplay of local tectonics and Global Eustasy*. Ph.D. Thesis, Johns Hopkins University, Baltimore, 1-468.
- GOLDHAMMER R.K., DUNN P.A. & HARDIE L.A. (1987) - *High frequency glacio-eustatic sealevel oscillations with Milankovitch characteristics recorded in Middle Triassic platform carbonates in Northern Italy*. Am. J. Sci., 287: 853-892.
- GOLDHAMMER R.K., DUNN P.A. & HARDIE L.A. (1990) - *Depositional cycles, composite sea-level changes, cycle stacking patterns, and the hierarchy of stratigraphic forcing*. Geol. Soc. Amer. Bull., 102: 535-562.
- GOLDHAMMER R.K. & HARRIS M.T. (1989) - *Eustatic controls on the stratigraphy and geometry of the latemar buildup (Middle Triassic), the Dolomites of northern Italy*. In: CREVELLO et alii (eds), Controls on carbonate platform and basin development. SEPM Spec. Publ., 44: 323-338.
- GRANDESSO P. (1976) - *Biostratigrafia delle formazioni terziarie del Vallone Bellunese*. Boll. Soc. Geol. It., 94 (1975), 1323-1348, Roma.
- GRELAUD S., BUIL D., HARDY S. & FRIZON DE LAMOTTE D. (2000) - *Trishear kinematic model of fault-propagation folding and sequential development of minor structures: the Oupia Anticline (NE Pyrenees, France) case study*. Bull.

- Soc. Geol. Fr., v. 171; no. 4; 441-449 pp.; DOI: 10.2113/171.4.441.
- GRIPP A.E. & GORDON R.G. (2002) - *Young tracks of hot-spots and current plate Velocities*. *Geophys. J. Int.*, **150**: 321-361.
- GUEGUEN E., DOGLIONI C. & FERNANDEZ M. (1998) - *On the post 25 Ma geodynamic evolution of the western Mediterranean*. *Tectonophysics*, **298**: 259-269.
- GUERRERA F., MARTIN-ALGARRA A. & PERRONE V. (1993) - *Late Oligocene-Miocene syn-/late orogenic successions in western and central Mediterranean chain from the betic cordillera to the southern Apennines*. *Terra Nova* **5**: 525-544 pp.
- HANDIN J. (1969) - *On the Coulomb-Mohr failure criterion*. *J. Geophys. Res.*, **74**: 5343-5348.
- HARDING T.P. (1983) - *Divergent wrench fault and negative flower structure, Andaman Sea*. in A.W. BALLY ed., *Seismic expression of structural styles: American Association of Petroleum Geologists Studies in Geology Series no. 15, v. 3, 4.2-1-8 pp.*
- HARDING T.P., GREGORY R.F. & STEPHENS L.H. (1983) - *Convergent wrench fault and positive flower structure, Ardmore Basin, Oklahoma*, in A.W. BALLY ed., *Seismic expression of structural styles: American Association of Petroleum Geologists Studies in Geology Series no. 15, v. 3, 4.2-13-17 pp.*
- HARDIE L.A., BOSELLINI A. & GOLDHAMMER R.K. (1986) - *Repeated subaerial exposure of subtidal carbonate platforms, Triassic, Northern Italy: evidence for high frequency sea-level oscillations on a 10(4) year scale*. *Paleoceanography*, **1**: 447-457.
- HARDIE L.A., NEWTON WILSON E. & GOLDHAMMER R.K. (1991) - *Cyclostratigraphy and dolomitization of the Middle Triassic Latemar buildup, the Dolomites, northern Italy*. *Dolomieu Conference on Carbonate Platforms and Dolomitization*. Guidebook Excursion F, 1-56.
- HUDEC M.R. & JACKSON M.P.A. (2004) - *Regional restoration across the Kwanza Basin, Angola: Salt tectonics triggered by repeated uplift of a metastable passive margin*. *Am. Assoc. Petrol. Geol. Bull.*, **88**: 971-990.
- HEFLIN M. *et alii* (2002) - <http://sideshow.jpl.nasa.gov/mbh/series.html>
- HUIQI L., MCCLAY K.R. & POWELL D. (1992) - *Physical models of thrust wedges*. In: K.R. MCCLAY (Ed): *Thrust Tectonics*, Chapman and Hall, 71-81, London.
- HUGUEN C., MASCLE J., CHAUMILLON E., WOODSIDE J.M., BENKHELIL J., KOPF A. & VOLKONSKAIA A. (2001) - *Deformational styles of the eastern Mediterranean Ridge and surroundings from combined swath mapping and seismic reflection profiling*. *Tectonophysics*, **343**: 21-47 pp.
- JACKSON M.P.A. & TALBOT C.J. (1991) - *A Glossary of Salt Tectonics*, Bureau of Economic Geology, University of Texas at Austin.
- JACKSON M.P.A. & VENDEVILLE B.C. (1994) - *Regional extension as a geologic trigger for diapirism*, *GSA Bulletin*, **106**: 57-73.
- JADOUL F. (1986) - *Stratigrafia e Paleogeografia del Norico nelle Prealpi Bergamasche occidentali*. *Riv. It. Paleont. Strat.*, **91**, 4: 479-512.
- JADOUL F. (1990) - *Il Norico superiore delle Prealpi Bergamasche occidentali*. Field trip A2 of the 75° Congress of the "Società Geologica Italiana".
- JAEGER J.C. & COOK N.G.W. (1979) - *Fundamentals of rock mechanics*, 3rd Edition, London, Mathuen, 593 pp.
- JONES P.B. (1982) - *Oil and gas beneath east-dipping underthrust faults in the Alberta foothills*. In R.B. POWERS (Ed.): *Geologic Studies of the Cordilleran Thrust Belt*. Rocky Mountain Ass. Geol., 61-74, Denver.
- JORDAN T.H. (1974) - *Some Comments on Tidal Drag as a Mechanism for Driving Plate Motions*. *J. Geophys. Res.*, **79**, **14**: 2141-2142.
- KALIN O. & TRÜMPY R. (1977) - *Sedimentation und Paleotektonik in den westlichen Sudalpen: Zur Triassisch-Jurassischen Gescichichte des Monte Nudo-Beckens*. *Eclogae Geol. Helv.*, **70**: 295-350.
- KASTENS K., MASCLE J., AUROUX C., *et alii* (1988) - *ODP Leg 107 in the Tyrrhenian Sea: Insights into passive margin and back-arc basin evolution*. *Geological Society of America Bulletin*, **100**: 1140-1156 pp.
- KEARY P. & VINE F. (1992) - *Global Tectonics*, Blackwell Science, 333 pp.
- KENT D.V., MUTTONI G. & BRACK P. (2004) - *Magnetostratigraphic confirmation of a much faster tempo for sea-level change for the Middle Triassic Latemar platform carbonates*, *Earth Planet. Sci. Lett.*, **228**: 369-377.
- KENTER J.A.M. (1990) - *Carbonate platform flanks: slope angle and sediment fabric*. *Sedimentology*, **37**: 777-794.
- KHALIL S. (1998) - *Tectonic Evolution of the Eastern Margin of the Gulf of Suez, Egypt*. PhD Thesis, Royal Holloway, University of London, 349 pp.
- KHALIL S.M. & MCCLAY K.R. (2001) - *Tectonic evolution of the northwestern Red Sea-Gulf of Suez system*, *Special Publication-Geological Society Of London*, **187**: 453-473.
- KISSLING E. (1993) - *Deep structure of the Alps; what do we really know?* *Phys. Earth Planet. Int.*, v. **79**, 1-2, 87-112 pp.
- KOBER L. (1908) - *Das Dachsteinkalkgebirge zwischen Garder, Rienz und Boite*. *Mitt. Geol. Ges.* **1**, Wien.
- KOYI H.A., HESSAMI K. & TEIXELL A. (2000) - *Epicenter distribution and magnitude of earthquakes in fold-thrust belts: insights from sandbox models*, *Geophys. Res. Lett.*, **27**: 273-276.
- KUMMEROW J., KIND R., ONCKEN O., GIESE P., RYBERG T., WYLEGALLA K., SCHERBAUM F. & TRANSALP Working Group (2004) - *A natural and controlled source seismic profile through the Eastern Alps*: *TRANSALP. Earth and Planetary Science Letters* **225**: 115- 129.
- LAUBSCHER H.P. (1971) - *Das Alpen-Dinariden-Problem und die Palinspastik der südlichen Tethys*. *Geol. Rundschau*, **60**, **3**: 813-833.
- LAUBSCHER H.P. (1983) - *The Late Alpine (Periadriatic intrusions and the Insubric Line*. *Mem. Soc. Geol. It.*, **26**: 21-30, Roma.
- LAUBSCHER H.P. (1985) - *Large scale, thin skinned thrusting in the Southern Alps: kinematic models*. *Geol. Soc. Amer.*

- Bull., 96: 710-718, Tulsa.
- LAWTON T.F., BOYER S.E. & SCHMITT J.G. (1994) - *Influence of inherited taper on structural variability and conglomerate distribution, Cordilleran fold and thrust belt, western United States*. *Geology*, 22: 339-342.
- LENCI F. & DOGLIONI C. (2007) - *On some geometric prism asymmetries*. In: *Thrust belts and Foreland Basins: From Fold Kinematics to Hydrocarbon Systems*, O. LACOMBE, J. LAVÉ, F. ROURE & J. VERGES (Eds.), *Frontiers in Earth Sciences*, Springer, 41,60.
- LEONARDI P. (1955) - *Breve sintesi geologica delle Dolomiti occidentali*. *Boll. Soc. Geol. It.*, 74: 1-79.
- LEONARDI P. (1962) - *Il Gruppo dello Sciliar e le scogliere coralligene dolomitiche*. *Ann. Univ. Ferrara*, IX, III, 6-82.
- LEONARDI P. (1965) - *Tectonics and Tectonogenesis of the Dolomites*. *Eclogae Geol. Helv.*, 58, 1: 49-62, Basel.
- LEONARDI P. et alii (1967) - *Le Dolomiti. Geologia dei Monti tra Isarco e Piave*. Ed. Manfrini, Rovereto, vols.1-2, 1-981.
- LÜSCHEN E., LAMMERER B., GEBRANDE H., MILLAHN K., NICOLICH R. & TRANSALP Working Group, (2004) - *Orogenic structure of the Eastern Alps, Europe, from TRANSALP deep seismic reflection profiling*. *Tectonophysics* 388: 85-102
- MARIOTTI G. & DOGLIONI C. (2000) - *The dip of the foreland monocline in the Alps and Apennines*. *Earth and Planet. Sci. Lett.*, v. 181, 191-202 pp.
- MARTINIS B. (1966) - *Prove di Ampì sovrascorimenti nelle Prealpi friulane e venete*. *Mem. Ist. Geol. Miner. Univ. Padova*, 25.
- MASETTI D. & BIANCHIN G. (1987) - *Geologia del Gruppo della Schiara*. *Mem. Sc. Geol.*, 39: 187-212, Padova.
- MASETTI D. & NERI C. (1980) - *L'Anisico della Val di Fassa (Dolomiti occidentali): sedimentologia e paleogeografia*. *Ann. Univ. Ferrara*, 7/1, 1-19.
- MASETTI D., NERI C. & BOSELLINI A. (1991) - *Deep-water asymmetric cycles and progradation of carbonate platforms governed by high-frequency eustatic oscillations (Triassic of the Dolomites, Italy)*. *Geology*, 19, 4: 336-339.
- MASSARI F., GRANDESSO P., STEFANI C. & JOBSTRAIBIZER P.G. (1986) - *A small polyhistory foreland basin evolving in a context of oblique convergence: the Venetian basin (Chattian to Recent, Southern Alps, Italy)*. *Spec. Publs. Int. Ass. Sediment.*, 8: 141-168, Oxford.
- MASSARI F., MELLERE D. & DOGLIONI C. (1990) - *Cyclicity in nonmarine foreland basin sedimentary infill: the Messinian Conglomerate-bearing succession of the Eastern Southern Alps (Italy)*. *Lisboa Meeting Preceedings*.
- MASSARI F. & NERI C. (1997) - *The infill of a supradetachment (?) basin: the continental to shallow-marine Upper Permian succession of Dolomites and Carnia (Italy)*. *Sedimentary Geology*, v. 110, 181-221 pp.
- MASSON D.G. & MILES P.R. (1986) - *Development and Hydrocarbon Potential of Mesozoic Sedimentary Basins Around Margins of North Atlantic*. *Amer. Ass. Petrol. Geol. Bull.*, 70, 6: 721-729.
- MCCLAY K.R. (1989) - *Analogue models of inversion tectonics*, in M. A. COOPER & G. D. WILLIAMS, eds., *Inversion tectonics: Geological Society of London, Sp. Publ.* 44: 41-59.
- MCCLAY K.R. (1992) - *Glossary of thrust tectonics terms*. In K.R. MCCLAY (Ed.) "Thrust tectonics", Chapman & Hall, London, United Kingdom, 419-433.
- MCCLAY K. R., DOOLEY T. WHITEHOUSE P. & MILLS M. (2002) - *4-D evolution of rift systems: Insights from scaled physical models*. *Am. Assoc. Petrol. Geol. Bull.*, 86: 935-959.
- MCNEILL L.C., PIPER K.A., GOLDFINGER C., KULM L.D. & YEATS R.S. (1997) - *Listric normal faulting on the Cascadia continental margin*, *J. Struct. Geol.*, 102, 12, 123-12, 138.
- MCQUARRIE N. (2004) - *Crustal scale geometry of the Zagros fold-thrust belt, Iran*. *J. Struct. Geol.*, 26, 519-535.
- MERLA G. (1931) - *Osservazioni morfologiche e tettoniche sugli altipiani ampezzani (Fosses-Sennes-Fanes)*. *Atti Soc. Toscana Sc. Nat.*, Mem. 42, Pisa.
- MERLINI S., DOGLIONI C., FANTONI R. & PONTON M. (2002) - *Analisi strutturale lungo un profilo geologico tra la linea Fella-Sava e l'avampaese adriatico (Friuli Venezia Giulia-Italia)*. *Mem. Soc. Geol. It.*, 57: 293-300.
- MILANI E.J. & DAVISON I. (1988) - *Basement control and transfer tectonics in the Reconcavo-Tucano-Jatoba rift, Brazil*. *Tectonophysics*, 154: 41-70.
- MITRA S. (1986) - *Duplex structures and imbricate thrust systems*. *Amer. Ass. Petrol. Geol.*, 70/9: 1087-1112.
- MITRA S. (1988) - *Three-dimensional geometry of the Pine Mountain thrust system, Southern Appalachians*. *Amer. Geol. Soc. Bull.*, 100: 72-95.
- MITRA S. (2002) - *Fold-accommodation faults*. *Am. Assoc. Petrol. Geol. Bull.*, 86: 671-693.
- MITRA S. & NAMSON J. (1989) - *Equal-area balancing*. *Amer. J. Sci.*, 289: 563-599.
- MOHR M., KUKLA P.A., URAI J.L. & BRESSER G. (2005) - *Multiphase salt tectonic evolution in NW Germany: seismic interpretation and retro-deformation*. *Int. J. Earth Sci. (Geol Rundsch)*, 94: 917-940.
- MOHR M., KUKLA P.A., URAI J.L. & BRESSER G. (2006) - *Mapping, modeling and evolution of salt structure geometries: implications for improved sub-salt exploration*. *Am. Ass. Petrol. Geol. Annual Convention*.
- MOJSISOVICS VON E. (1879) - *Die Dolomit-Riffe von Südtirol und Venetien*. *Beiträge zur Bildungsgeschichte der Alpen*, 1, 1-552, Hölder, Wien.
- MORELLATO C., REDINI F. & DOGLIONI C. (2003) - *On the number and spacing of faults*. *Terra Nova*, 15, 315-321, doi: 10.1046/j.1365-3121.2003.00501.x
- MORLEY C.K. (2002) - *Evolution of large normal faults: Evidence from seismic reflection data*. *Am. Assoc. Petrol. Geol. Bulletin*, 86: 961-978.
- MÜLLER M., NIEBERDING F. & WANNINGER A. (1988) - *Tectonic style and pressure distribution at the northern margin of the Alps between Lake Constance and River Inn*. *Geol. Rund.*, 77, 3, 787-796, Stuttgart.
- MUELLER S. & PANZA G.F. (1986) - *Evidence of a deep-rea-*

- ching lithospheric root under the Alpine Arc.* In: The Origin of Arcs: F.C. WEZEL (Ed.), Elsevier, v. 21, 93-113 pp.
- MUTTI E. (1985) - *Turbidite systems and their relations to depositional sequences.* In: G.G. ZUFFA (Ed), Provenance of arenites: NATO-ASI Series, Reidel Publishing Co., 65-93.
- MUTTI E. & NORMARK W.R. (1987) - *Comparing examples of modern and ancient turbidite systems: Problems and concepts.* In: J.K. LEGGET & G.G. ZUFFA (Eds), Deep Water Clastic Deposits: Models and Case Histories. Graham & Trotman, 1-38.
- MUTTI E., SEGURET M. & SGAVETTI M. (1988) - *Sedimentation and Deformation in the Tertiary Sequences of the Southern Pyrenees.* Am. Assoc. Petrol. Geol. Mediterranean Basins Conference, Nice, Field Trip guide book 7: 1-157.
- NEWTON WILSON E., HARDIE L.A. & PHILLIPS O.M. (1990) - *Dolomitization front geometry, fluid flow patterns, and the origin of massive dolomite: the Triassic Latemar buildup, northern Italy.* Amer. Journ. Science, 290: 741-796.
- OGLIVIE GORDON M.M. (1910) - *Die Überschiebung am Giepfel des Sellamassiv in Südtirol.* Verhandl. Geol. Reichsanstalt, Wien.
- OGLIVIE GORDON M.M. (1929) - *Geologie des Gebietes von Pieve (Buchenstein), St. Cassian, und Cortina d'Ampezzo.* Jahrb. Geol. Bundesanst., Bd., 79, Heft 3-4, Wien.
- OGLIVIE GORDON M.M. (1934) - *Geologie von Cortina d'Ampezzo und Cadore.* Jahrb. Geol. Bundesanst., Bd. 84, Heft. 1-4, Wien.
- PANZA G.F. & MUELLER S. (1978) - *The plate boundary between Eurasia and Africa in the Alpine area.* Mem. Ist. Geol. Mineral. Univ. Padova, 33: 43-50.
- PANZA G.F., PONTEVIVO A., CHIMERA G., RAYKOVA R. & AOUDIA A. (2003) - *The Lithosphere-Asthenosphere: Italy and surroundings.* Episodes, 26, 3: 169-174.
- PANZA G., RAYKOVA R.B., CARMINATI E. & DOGLIONI C. (2007) - *Upper mantle flow in the western Mediterranean.* Earth Planet. Sci. Lett., 257: 200-214.
- PEACOCK D.C.P. (2002) - *Propagation, interaction and linkage in normal fault systems.* Earth Sci. Rev., 58: 121-142.
- PEACOCK D.C.P. & SANDERSON D.J. (1994) - *Geometry and development of relay ramps in normal fault systems.* Am. Assoc. Petrol. Geol. Bulletin, 78: 147-165.
- PIFFNER O.A., LEHNER P., HEITZMANN P., MUELLER S. & STECK A. (1997) - *Results of NRP20-Deep structure of the Alps.* Birkhäuser Verlag, Basel.
- PIA J. (1937) - *Stratigraphie und Tektonik der Prager Dolomiten in Südtirol.* 1-248, Wien.
- PIERI M. (1983) - *Three seismic profiles through the Po Plain.* In: Seismic expression of structural styles (Ed A.W. BALLY), Am. Ass. Petrol. Geol. Studies in Geology 15 (1983) 3.4.1/8-26
- PIERI M. & GROPPI G. (1981) - *Subsurface geological structure of the Po plain, Italy.* Prog. Final. Geod., Pubbl. 414, 1-13 pp., Roma.
- PISA G., CASTELLARIN A., LUCCHINI F., ROSSI P.L., SIMBOLI G., BOSELLINI A. & SOMMAVILLA E. (1979) - *Middle Triassic magmatism in Southern Alps. I: a review of general data in the Dolomites.* Riv. It. Paleont. Strat., 85, 3-4: 1093-1110.
- PISA G., FARABEGOLI E. & OTT E. (1978) - *Stratigrafia e paleogeografia dei terreni anisici della Conca di Agordo e dell'Alta Val di Zoldo (Dolomiti sudorientali).* Mem. Soc.Geol. It., 18: 63-92.
- PLATT N., PHILIP P. & STEWARD W. (1993) - *Going for the play: Structural interpretation in offshore Congo.* Oilfield Review.
- POSENATO R. (1988) - *The Permian-Triassic boundary in the Western Dolomites, Italy.* Review and proposal. Ann. Univ. Ferrara, 1, 3: 31-45.
- PREMOLI SILVA I. & LUTERBACHER H. (1966) - *The Cretaceous-Tertiary boundary in the Southern Alps (Italy).* Riv. It. Paleont., 72: 1183-1266.
- PRETO N., HINNOV L.A., HARDIE L. & DE ZANCHE V. (2001) - *Middle Triassic orbital signature recorded in the shallow-marine Latemar carbonate buildup (Dolomites, Italy).* Geology, v. 29, n. 12, 1123-1126 pp.
- RAMSAY J.G. & HUBER M. (1987) - *Modern structural geology, Folds and fractures.* Vol. II, Academic Press, London, 309-700 pp.
- RANALLI G. & MURPHY D.C. (1987) - *Rheological stratification of the lithosphere.* Tectonophysics, 132: 281-295.
- RÉHAULT J.P., MASCLE J. & BOILLOT G. (1984) - *Evolution géodynamique de la Méditerranée depuis l'Oligocène.* Memorie Società Geologica Italiana, 27, 85-96 pp.
- REITHOFER O. (1928) - *Geologie der Sellagruppe (Südtiroler Dolomiten).* Jb. geol. Bundesanst. (Wien) 78/3-4, 529-579.
- RICARD Y., DOGLIONI C. & SABADINI R. (1991) - *Differential rotation between lithosphere and mantle: a consequence of lateral mantle viscosity variations.* Journ. Geophysical Research, 96: 8407-8415.
- RIVA M., BESIO M., MASETTI D., ROCCATI F., SAPIGNI M. & SEMENZA E. (1990) - *Geologia delle valli Vajont e Gallina (Dolomiti orientali).* Ann. Univ. Ferrara 2, 4, 53-76.
- ROEDER D. (1985) - *Geodynamics of Southern Alps. Seminar paper given at University of Milan, Anschutz Corporation Exploration Research Division, 1-22, Denver.*
- ROEDER D. (1989) - *South-Alpine thrusting and trans-Alpine convergence.* In: M.P. COWARD, D. DIETRICH & R.G. PARK (Eds), Alpine Tectonics, Geol. Soc. Spec. Publ., 45: 211-227.
- ROSSI D. (1957) - *Gli aspetti morfologici delle cime dolomitiche.* Boll. Soc. Geol. Ital., 76: 46-66.
- ROSSI D. (1962) - *Geologia della parte meridionale del Gruppo della Marmolada.* Mem. Mus. Storia Nat. Venetia Tridentina, 14, 1b, 1-189.
- ROSSI D. (1977) - *Un esempio di tettonica prealpinica forse diapirica nelle Dolomiti occidentali (Val di S. Nicolò).* Ann. Univ. Ferrara, 5, 12, 213-221.
- ROSSI P.L. SIMBOLI G. & SOMMAVILLA E. (1974) - *La serie vulcanica medio-triassica della Catena del Padon (Gruppo della Marmolada, parte settentrionale).* Miner. Petrogr. Acta, 20:

- 1-48.
- ROSSI P.M. & JADOUL F. (1982) - *Evoluzione paleogeografico-strutturale e vulcanismo triassico nella Lombardia centro-occidentale*. In CASTELLARIN & VAI (Eds), Guida alla geologia del Sudalpino centro-orientale. Guide Geol. Reg., Soc. Geol. It., 143-156.
- ROSSI M.E. & ROGLEDI S. (1988) - *Relative sea-level changes, local tectonic settings and basin margin sedimentation in the interference zone between two orogenic belts: seismic stratigraphic examples from Padan foreland basin, northern Italy*. In: NEMEC & STEEL (Eds), Fan Deltas: Sedimentology and Tectonic Settings, Blackie & Son, 368-384.
- RUDOLF K.W., SCHLAGER W. & BIDDLE K.T. (1989) - *Seismic models of a carbonate foreslope-to-basin transition, Picco di Vallandro, Dolomite Alps, northern Italy*. Geology, 17, 5: 389-484.
- RUSSO F., NERI C., MASTANDREA A. & LAGHI G. (1991) - *Depositional and diagenetic history of the Alpe di Specie (Seeland alpe) fauna (Carnian, Northeastern Dolomites)*. Facies, 25: 187-210.
- RUSSO F., MASTRANDREA A., STEFANI M. & NERI C. (2000) - *Carbonate facies dominated by syndepositional cements: a key component of Middle Triassic platforms. The Marmolada case history (Dolomites, Italy)*. Facies, v. 42, 211-226 pp.
- RUSSO F., NERI, C. & MASTRANDREA A. (1998) - *Le comunità costruttrici delle piattaforme triassiche delle Dolomiti: Memorie della Società Geologica Italiana*, v. 53, 479-488 pp.
- SABADINI R., DOGLIONI C. & YUEN D.A. (1990) - *Eustatic sea-level fluctuations induced by polar wander*. Nature, 345: 708-710.
- SACERDOTI M. & SOMMAVILLA E. (1962) - *Pillowlave, ialoclastiti e altre formazioni vulcanoclastiche nella Regione Dolomitica occidentale*. Studi Trent. Sci. Nat., 39: 423-473.
- SARTI M. & ARDIZZONI F. (1984) - *Tettonica triassica nel Gruppo di Cima Pape. Pale di Sanson (Dolomiti Bellunesi)*. Mem. Sci. Geol., 36: 353-370.
- SCHLAGER W., BIDDLE K.T. & STAFLEU J. (1991) - *Picco di Vallandro (Dürrenstein) a platform-basin transition in outcrop and seismic model*. Dolomieu Conference on Carbonate Platforms and Dolomitization. Guidebook Excursion D, 1-22.
- SCHMID S.M., AEBLI H.R., HELLER F. & ZINGG A. (1989) - *The role of the Periadriatic Line in the tectonic evolution of the Alps*. In: COWARD et alii (eds), Alpine tectonics. Spec. Publ. geol. Soc. London 45: 153-171.
- SCHOLZ C.H. (1990) - *Mechanics of earthquakes and faulting*. Cambridge University Press, Cambridge, England, 439 pp.
- SCHÖNBORN G. (1999) - *Balancing cross sections with kinematic constraints: The Dolomites (northern Italy)*. Tectonics, 18, 3, 527-545 pp.
- SCHWINNER R. (1915) - *Zur Tektonik der Ampezzaner Dolomiten*. Mitt. Geol. Ges. 8, Wien.
- SCOPPOLA B., BOCCALETTI D., BEVIS M., CARMINATI E. & DOGLIONI C. (2006) - *The westward drift of the lithosphere: a rotational drag?* Bull. Geol. Soc. Am., 118, 1/2; 199-209 pp.; doi: 10.1130/B25734.1.
- SCROCCA D., DOGLIONI C. & INNOCENTI F. (2003) - *Constraints for an interpretation of the Italian geodynamics: a review*. In: D. SCROCCA, C. DOGLIONI, F. INNOCENTI, P. MANETTI, A. MAZZOTTI, L. BERTELLI, L. BURBI, S. D'OFFIZI (Eds.): "CROP Atlas: seismic reflection profiles of the Italian crust". Mem. Descr. Carta Geol. It., 62: 15-46.
- SCROCCA D., DOGLIONI C., INNOCENTI F., MANETTI P., MAZZOTTI A., BERTELLI L. BURBI L. & D'OFFIZI S. (Editors), 2003. "CROP Atlas: seismic reflection profiles of the Italian crust". Mem. Descr. Carta Geol. It., 62, 194 pp.
- SCROCCA D., CARMINATI E., DOGLIONI C. & MARCANTONI D. (2007) - *Slab retreat and active shortening along the central-northern Apennines*. In: Thrust belts and Foreland Basins: From Fold Kinematics to Hydrocarbon Systems, O. LACOMBE, J. LAVÉ, F. ROURE & J. VERGES (Eds.), Frontiers in Earth Sciences, Springer, in press.
- SCUDELLER BACCELLE L. & SEMENZA E. (1974) - *Flysch terrigeno con strutture contornitiche nel Cretacico delle Dolomiti Ampezzane*. Caratteristiche sedimentologiche e significato geodinamico. Ann. Univ. Ferrara, 5/9, 165-199.
- SELLI R. (1947) - *La Geologia dell'Alto Bacino dell'Isonzo (stratigrafia e tettonica)*. Giorn. Geol., 2, XIX, 1-153.
- SELLI R. (1963) - *Schema geologico delle Alpi Carniche e Giulie Occidentali*. Giorn. Geol., 2, 30, 1-121.
- SEMENTA E. (1959) - *Osservazioni sulla tettonica del fianco sinistro della Valle del Piave nel tratto tra Lozzo e Pieve di cadore*. Rend. Acc. Naz. Lincei, 8, 27/6, 397-404.
- SEMENTA E. (1960) *Nuovi studi tettonici nella Valle del Vajont e zone limitrofe*. Rend. Acc. Naz. Lincei, Cl. Sc. fis. mat. e nat., S.VIII, 28, 2, Roma.
- SEMENTA E. (1974) - *La fase giudicariense nel quadro di una nuova ipotesi sull'orogenesi alpina nell'area italo-dinarica*. Mem. Soc. Geol. It., 13, 187-226, Roma.
- SEMENTA E., BIANCHIN G. & MAZZEO G. (1984) - *Geologia dei Monti a Sud di Costa Vedoria (Cadore sudorientale)*. Ann. Univ. Ferrara, 8/11, 145-167.
- SHAW J.H., CONNORS C. & SUPPE J. (2005) - *Seismic interpretation of contractional fault-related folds*. Am. Assoc. Petrol. Geol. Seismic Atlas. Studies in Geology n. 53.
- SIBSON R.H. (1981) - *Controls on low-stress hydro-fracture dilatancy in thrust, wrench and normal fault terrains*. Nature, 289: 665-667.
- SIBSON R.H. (1990) - *Rupture nucleation on unfavorably oriented faults*. Bulletin of the Seismological Society of America, 80: 1580-1604.
- SIBSON R.H. (1998) - *Brittle failure mode plots for compressional and extensional tectonic regimes*. J. Struct. Geol., 20: 655-660.
- SIBSON R.H. (2001) - *Seismogenic framework for hydrothermal*

- transport and ore deposition. Soc. Economic Geol. Rev., 14: 25-50.
- SIGNORINI R. (1954) - *Osservazioni sulla struttura e la morfologia delle Dolomiti Orientali*. Boll. Soc. Geol. It., 70, 3, 545-564.
- SKUCE A.G. (1994) - *A structural model of a graben boundary fault system, Sirte Basin, Lybia: Compaction structures and transfer zones*. Can. J. Expl. Geophys., 30: 84-92.
- SLEIKO D., CARULLI G.B., CARRARO F., CASTALDINI D., CAVALLIN A., DOGLIONI C., ILCETO V., NICOLICH R., REBEZ R., SEMENZA E. ZANFERRARI A. & ZANOLLA C. (1987) - *Modello sismotettonico dell'Italia nord-orientale*. CNR, GNDT, Rend. 1: 1-82, Trieste.
- STAMPFLI G., BOREL G., CAVAZZA W., MOSAR J. & ZIEGLER P. A. (2001) - *The paleotectonic atlas of the Peri-Tethyan domain*. European Geophysical Society, CD rom.
- STANLEY D.J. & WEZEL F.C. (Eds) (1985) - *Geological Evolution of the Mediterranean Basin*. Springer-Verlag, 1-589 pp.
- STEFANINI G. (1915) - *Il Neogene del Veneto*. Mem. Ist. Geol. R. Univ. Padova, 3:1-286, Padova.
- SUNWALL M.T., MCQUILLAN K.A. & NICK C.J. (1983) - *Salt diapir; Gulf of Mexico*. Am. Assoc. Petrol. Geol. Studies in Geology, 15, 2.3.2-32-2.3.2-37 pp.
- SUPPE J. (1983) - *Geometry and Kinematics of fault-bend folding*. Amer. J. Sci. 283: 684-721.
- SUPPE J. (1985) - *Principles of Structural Geology*. Prentice-Hall, 1-537.
- SUPPE J. & MEDWEDEFF D.A. (1990) - *Geometry and kinematics of fault-propagation folding*. Eclogae geol. Helv. 83/3, 409-454.
- TARAMELLI T. (1882) - *Geologia delle Provincie Venete con Carte Geologiche e Profili*. Atti Acc. Naz. Lincei, Mem. Cl. Sc. Fis., 3, 13, 1-536 Roma.
- TOWNEND J. & ZOBACK M.D. (2000) - *How faulting keeps the crust strong*. Geology, 28: 399-402.
- TRACCANELLA E. (1987) - *Itinerari geologici nella zona della Marmolada e nell'Alta Val Cordevole*. Agip, Sepi, 1-86.
- TAPPONNIER P. & MOLNAR P. (1977) - *Active faulting and tectonics in China*. J. Geophys. Res., 82: 2905-2930.
- TRANSALP Working Group 2002, *First deep seismic reflection images of the Eastern Alps reveal giant crustal wedges and transcrustal ramps*. Geophys. Res. Lett., 29, 10, 10.1029/2002GL014911.
- TRENER G.B. (1909) - *Geologische Spezialkarte der Oest. Ung. Mon. 1:75.000, Blatt: Borgo und Fiera di Primiero*. K.K. Geol. R.A., Wien.
- TREVISAN L. (1939) - *Il Gruppo di Brenta*. Mem. Ist. Geol. Univ. Padova, 13: 1-128.
- TREVISAN L. (1941) - *Profili tettonici nella regione della bassa Sarca (Trentino)*. Studi Trentini Sc. Nat., Anno XXII, 1: 1-8, Trento.
- TREVISAN L. (1941) - *Caratteri particolari della tettonica dell'Altopiano dei Sette Comuni (Vicenza)*. Studi Trent. Sc. Nat., 22, 2, 79-88, Trento.
- TRUMPY R. (1980) - *An outline of the geology of Switzerland*. Schweiz. Geol. Komm., Geology of Switzerland, a guide-book, A, 1-104.
- TRUMPY R. (1982) - *Alpine Paleogeography: a Reappraisal*. In: K.J. HSU (ed), Mountain building processes. Academic Press, 149-156.
- TRUSHEIM F. (1960) - *Mechanism of salt migration in northern Germany*. Am. Ass. Petrol. Geol. Bull., 44: 1519-1540.
- TWISS R.J. & MOORES E.M. (1992) - *Structural geology*, W.H. Freeman and Compan, New York, 531 pp.
- VAI G.B., BORIANI A., RIVALENTI G. & SASSI P.F. (1982) - *Catena Ercinica e Paleozoico nelle Alpi Meridionali*. In: AA.VV. Cento anni di Geologia Italiana. Soc. Geol. It., Tecoprint Bologna, 133-154.
- VAI G.B. & MARTINI P. (Eds) (2001) - *Anatomy of an Orogen: the Apennines and Adjacent Mediterranean Basins*. Kluwer Academic Publisher, Dordrecht, The Netherlands, 1-632 pp.
- VAIL P.R., MITCHUM R.M.JR. & THOMPSON S.III (1977) - *Seismic stratigraphy and Global Changes of Sea Level, Part 4: Global Cycles of Relative Changes of Sea Level*. In: Seismic Stratigraphy. applications to hydrocarbon exploration, Amer. Ass. Petrol. Geol. Mem.. 26: 83-98, Tulsa.
- VAN BEMMELEN R.W. (1966) - *The structural evolution of the Southern Alps*. Geol. Mijnbouw, 45: 405-444.
- VARDABASSO S. (1930) - *Carta geologica del territorio eruttivo di Predazzo e Monzoni nelle Dolomiti di Fiemme e di Fassa*. R. Scuola d'Ingegneria, Padova.
- VARDABASSO S. (1931) - *Profili geologici attraverso le Dolomiti occidentali*. Min. Lav. Pubbl. Uff. Idrogr. R. Mag. Acque, Venezia.
- VENZO G.A. (1958) - *La Linea di Trodena e la struttura geologica della struttura Occlini*. Altipiano di Lavazè (Trentino Alto Adige). St. Trent. Sc. Nat., 35, 2-3, 99-106.
- VENZO S. (1939) - *Nuovo lembo tortoniano strizzato tra le filladi ed il permiano a Strigno di Valsugana (Trentino meridionale orientale)*. Boll. Soc. Geol. It., 58, 1, 175-185, Roma.
- VENZO S. (1939) - *Osservazioni geotettoniche e geomorfologiche sul rilevamento del foglio Belluno*. Boll. Soc. Geol. It., 58, 2-3, 433-451, Roma.
- VENZO S. (1940) - *Studio geotettonico del Trentino meridionale-orientale tra Borgo Valsugana e M. Coppolo*. Mem. Ist. Geol. Univ. Padova, 14: 1-86, Padova.
- VENZO S. (1954) - *Stratigrafia e tettonica del Flysch (Cretacico-Eocene) del Bergamasco e della Brianza orientale*. Mem. Descr. Carta Geol. Italia, 31: 1-133.
- VENZO S. (1977) - *I depositi Quaternari e del Neogene superiore nella basse Valle del Piave da Quero al Montello e del PaleoPiave nella Valle del Soligo (Treviso)*. Mem. Ist. Geol. Miner. Univ. Padova, 30: 1-63, Padova.
- VIEL G. (1979) - *Litostratigrafia Ladina: una revisione*. Ricostruzione paleogeografica e paleostrutturale dell'area Dolomitico-Cadorina (Alpi Meridionali); I e II parte. Riv. It. Paleont. Strat., 85, 1, 85-125; 85, 2, 297-352.
- XIAO H. & SUPPE J. (1992) - *Origin of rollover*. Am. Assoc. Petrol. Geol. Bull., 76: 509-529.

- WENDT J. (1982) - *The Cassian patch reefs (Lower Carnian, Southern Alps)*. *Facies*, **6**: 185-202.
- WEISSERT H.J. & BERNOULLI D. (1985) - *A transform margin in the Mesozoic Tethys: evidence from the Swiss Alps*. *Geol. Rund.*, **74**: 665-679.
- WILSON M. & BIANCHINI G. (1999) - *Tertiary-Quaternary magmatism within the Mediterranean and surrounding regions*. Geological Society Special Publication, **156**, 141-168 pp.
- WINTERER E.L. & BOSELLINI A. (1981) - *Subsidence and Sedimentation on a Jurassic Passive Continental Margin (Southern Alps, Italy)*. *Amer. Ass. Petrol. Geol. Bull.*, **65**: 394-421, Tulsa.
- WOODCOCK N.H. & FISCHER M. (1986) - *Strike-slip duplexes*, *J. Struct. Geol.*, **8**: 725-735.
- ZAMPIERI D. (1987) - *Le piattaforme carbonatiche triassiche delle Pale di San Martino (Dolomiti)*. *Mem. Sc. Geol., Padova*, 73-84.
- ZANFERRARI A. (1973) - *Osservazioni geologiche sui terreni attraversati dalle gallerie dell'autostrada di Alemagna presso Vittorio Veneto*. Significato dei dati in rapporto alla tettonica del margine meridionale del Cansiglio. *Mem. Soc. Geol. It.*, **12**, 4, 529-548.
- ZANFERRARI A., BOLLETTINARI G., CAROBENE L., CARTON A., CARULLI G.B., CASTALDIN D., CAVALLIN A., PANIZZA M., PELLEGRINI G.B., PIANETTI F. & SAURO U. (1982) - *Evoluzione neotettonica dell'Italia nord-orientale*. *Mem. Sc. Geol.*, **35**: 355-376, Padova.
- ZENARI S. (1934) - *Sulla tettonica dei dintorni di Lozzo in Cadore*. *Atti Acc.Sc.Ven.Trent.Istr.*, **24**: 3-7.
- ZIEGLER P.A. (1988) - *Evolution of the Arctic-North Atlantic and Western Tethys*. *Amer. Ass. Pet. Geol. Memoir*, **43**: 1-206.
- ZIEGLER P.A. (1992) - *European Cenozoic rift system*. *Tectonophysics*, **208**: 91-111.

INDEX

1. Elements of rheology	pag.	9
2. Fault mechanics: some basic aspects	“	15
3. Thrusts, folds and orogens	“	23
4. Normal faults and rift zones	“	63
5. Strike-slip faults - Opposite migration of seismicity	“	81
6. Salt tectonics	“	91
7. Geodynamic framework of subduction zones	“	99
8. Tectonics and Sedimentation	“	109
9. Mediterranean Geodynamics	“	137
10. Stratigraphy of the Dolomites	“	147
11. Tectonics of the Dolomites	“	163
Dolomites field trip - 1 st day excursion	“	197
2 nd day excursion	“	209
3 rd day excursion	“	225
4 th day excursion	“	243
5 th day excursion	“	261
<i>References</i>	“	283

BERIE SEDIMENTARIA E METAMORFICA

- Quaternario
- Neogene
- Paleogene
- Cretaceo
- Giuraseo
- TRIAS**
- Dolomia Principale (Natisio e Retico)
- Strati di Kalbi (Carnico sup.)
- Filoni porfirici e nefelici (Ladinico-Carnico)
- Lave, labolastiti e tuffi prevalentemente primari (Ladinico a talvolta Carnico inferiore)
- Strati di La Valle e Strati di S. Cassiano (Conglomerati, Anacrite, Marna e Argille con qualche intercalazione sabbiosa); Conglomerati della Marmolada (Ladinico-Carnico)
- Tuffi e breccie di eruzione basali (Ladinico)
- Formazioni di scogliera Ladinico-Carniche (Dolomia di Sciliar e Calc. di Marmolada; Dolomia di Ronca e Calc. del Lomazzo)
- Strati di Livinalonga (Ladinico inf.)
- Dolomia del Serlo, Calcareo di Conero e Strati e Trinodense (Anisio medio-superiore)
- Wefenseno e Anisio inferiore
- PERMIANO**
- Fornas, a Bellerophon e Armaria di Val Gardena; Conglomerati di Val Gardena
- PERMOCARBONIFERO**
- Lave rhyolitiche e trachitiche in diomi a colate con i corrispondenti tuffi
- Igneibriti rhyolitiche e fiodactilite
- Lave andesitiche e dacitiche e loro tuffi
- Conglomerato basale (L'Avversario alpino sud.)
- PREPERMIANO**
- Devoniano-buriano sup. (Banderkalf)
- Siluriano scisti verdi, tuffi diabasici
- Basamento cristallo con prevalenza di rocce filadiche e paragneiss

SISTEMA INTRUSIVO DI PREDAZZO E MONZONI

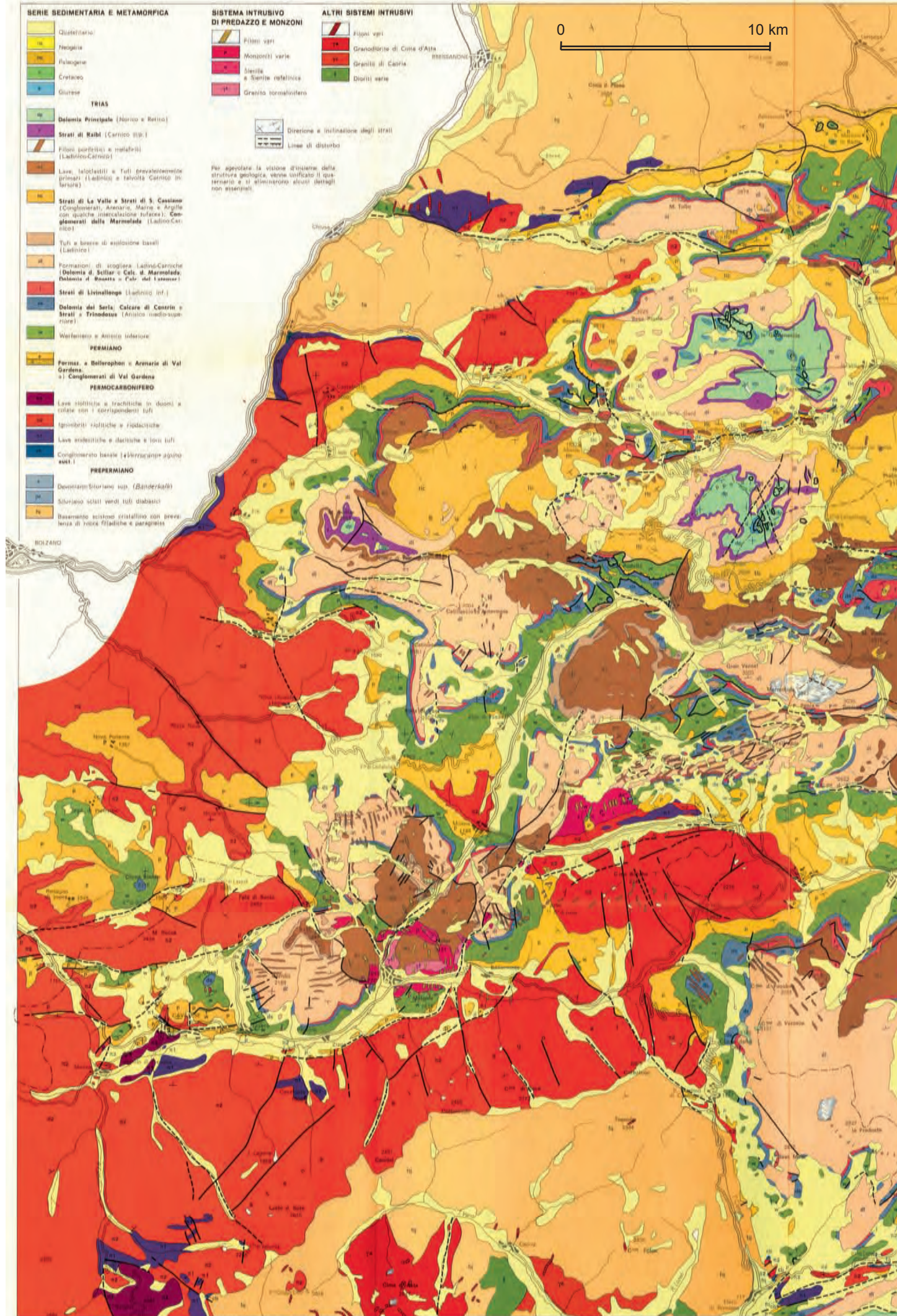
- Filoni vgr
- Monzoni varie
- Dioriti
- Dioriti a Sente nefelica
- Granito tonalinitico

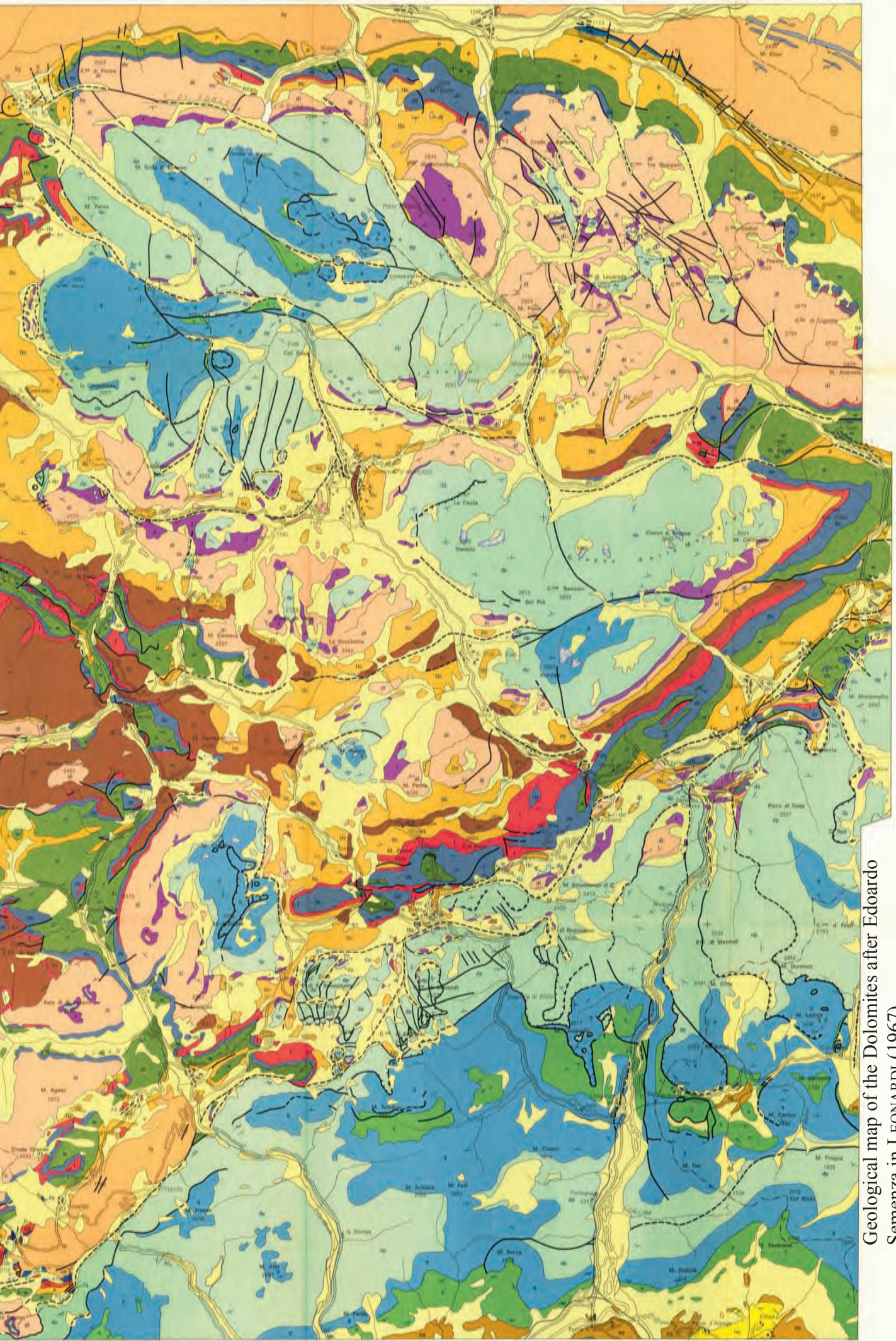
ALTRI SISTEMI INTRUSIVI

- Filoni vgr
- Granodiorite di Colle d'Alto
- Graniti di Carria
- Dioriti varie

Direzione e inclinazione degli strati
Linee di disturbo

Per agevolare la visione d'insieme della struttura geologica, viene sintetico il quarternario e si ommettono alcuni dettagli non essenziali.





Geological map of the Dolomites after Edoardo Semenza in LEONARDI (1967).