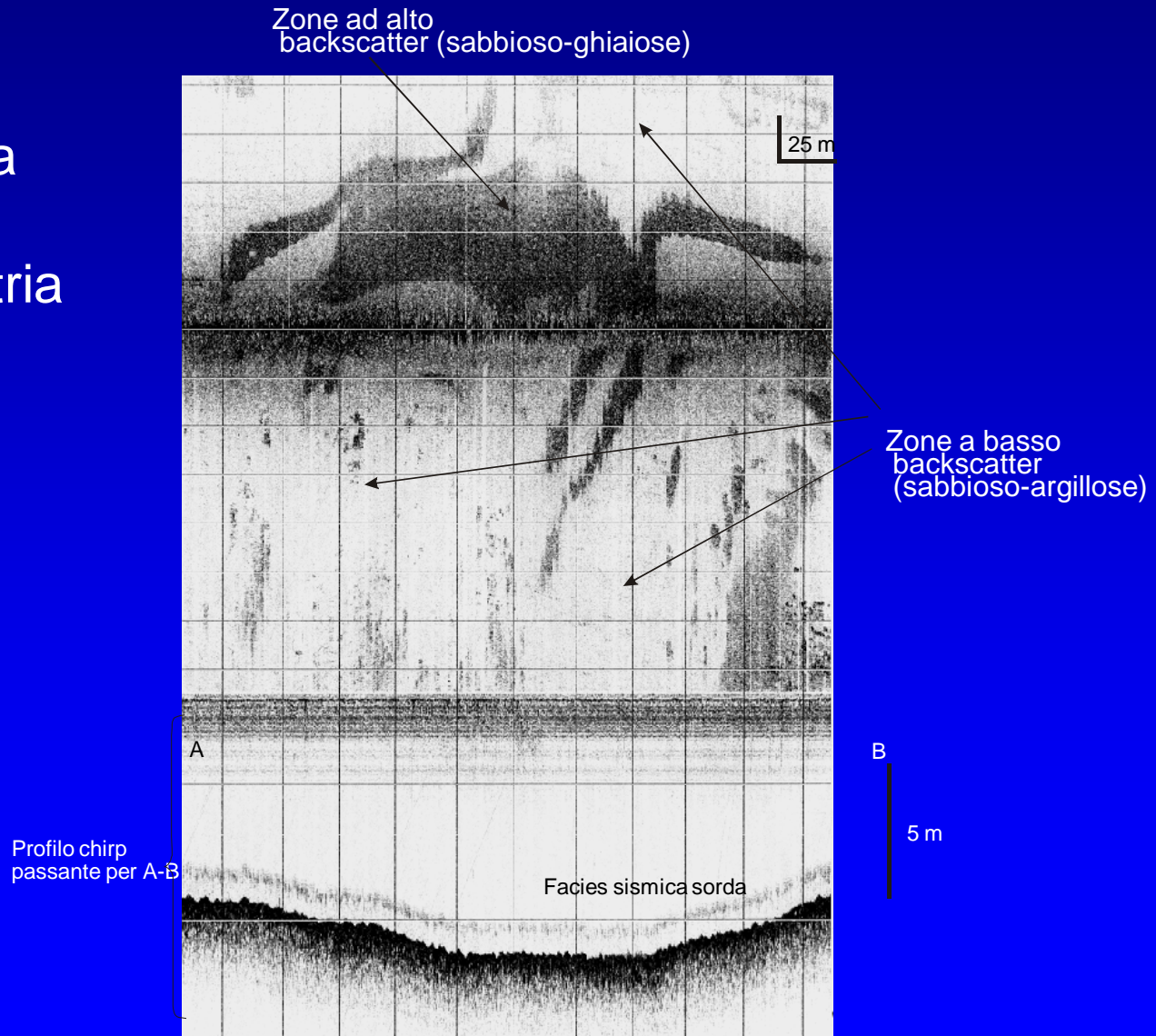
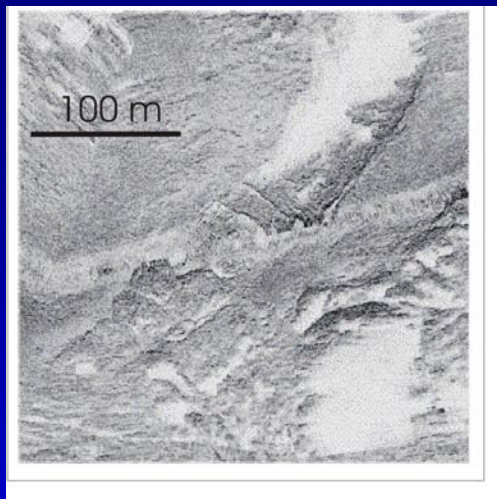


PIATTAFORMA CONTINENTALE

Sedimenti a
diversa
granulometria

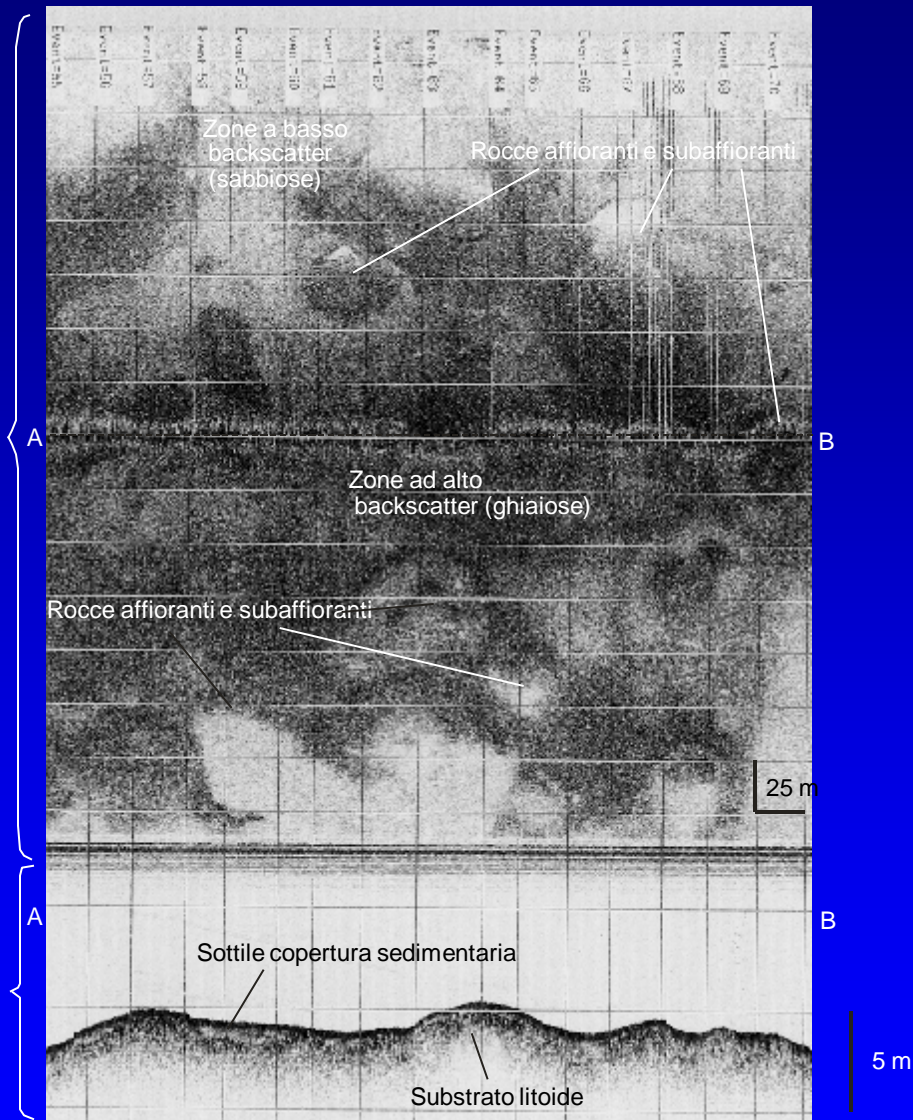


Affioramenti rocciosi

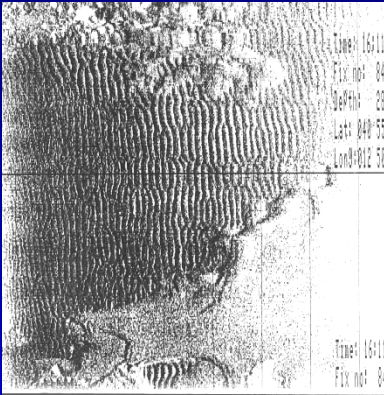


“Immagine side scan sonar”

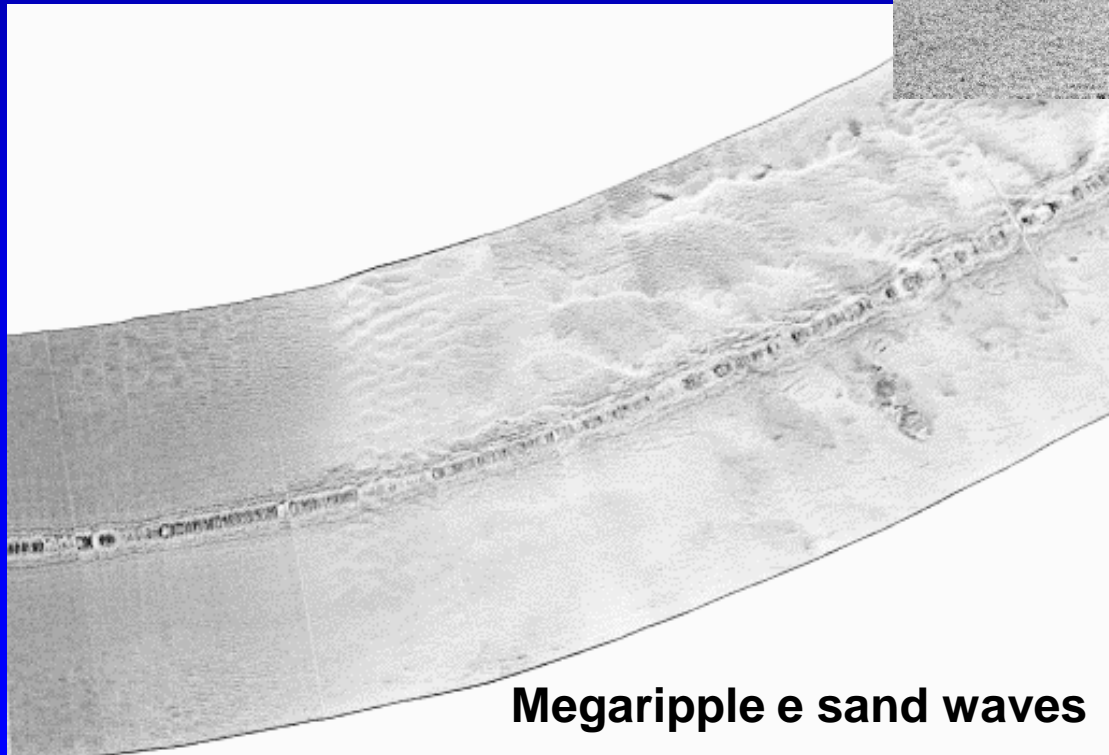
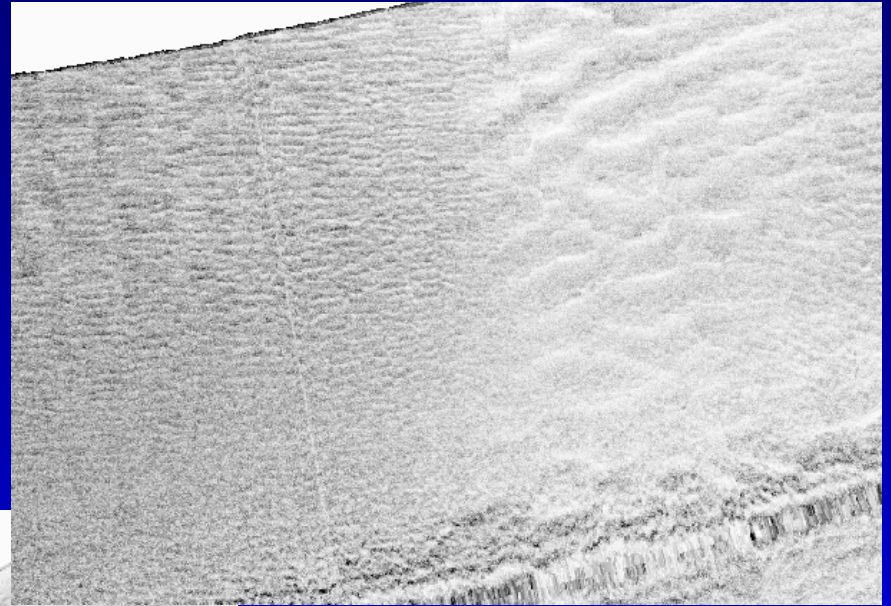
Profilo chirp per A-B



Forme di fondo

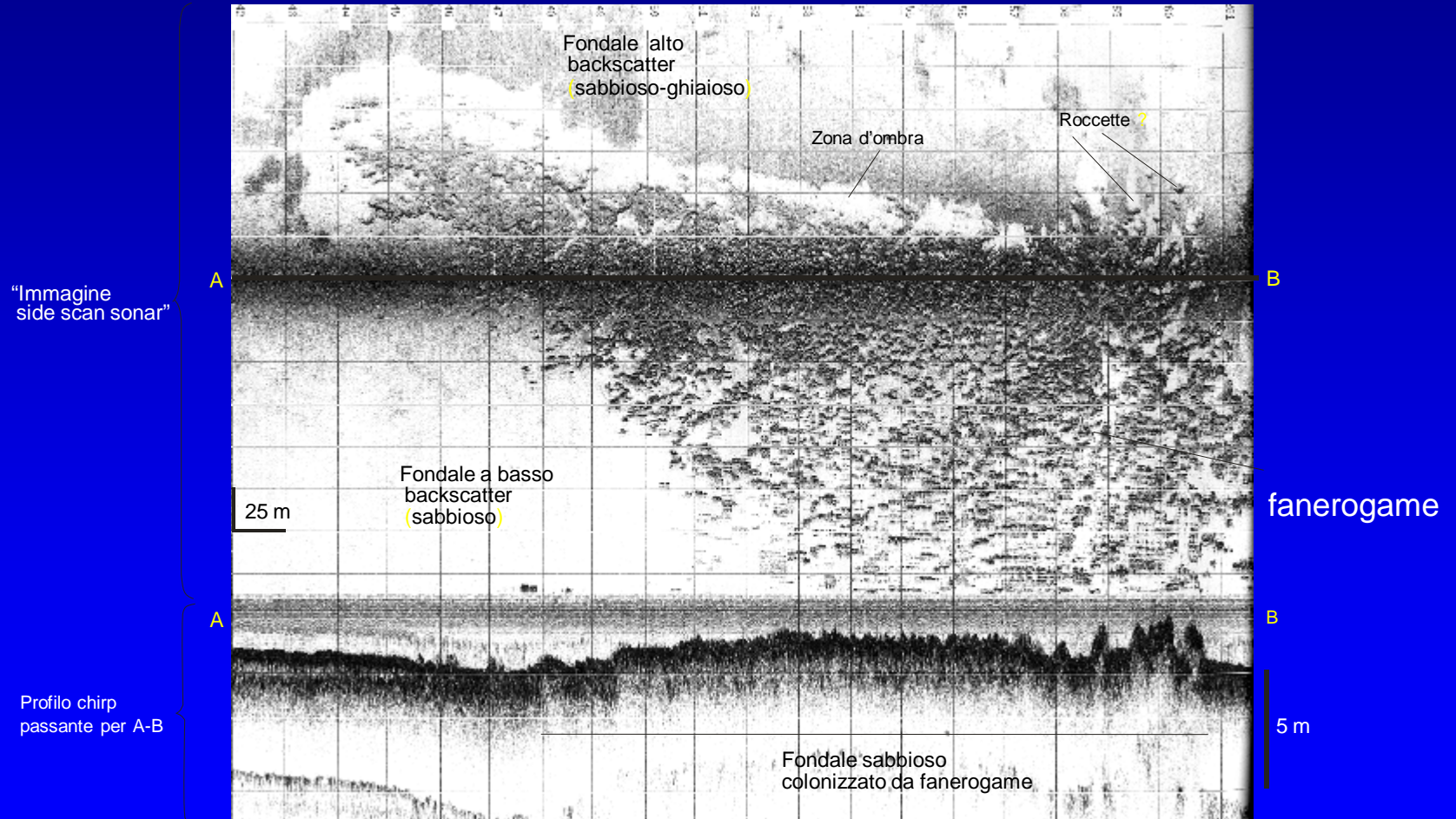
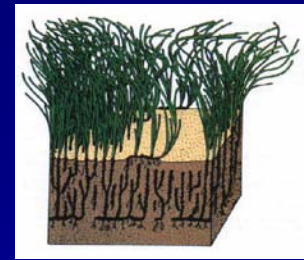


Megaripple

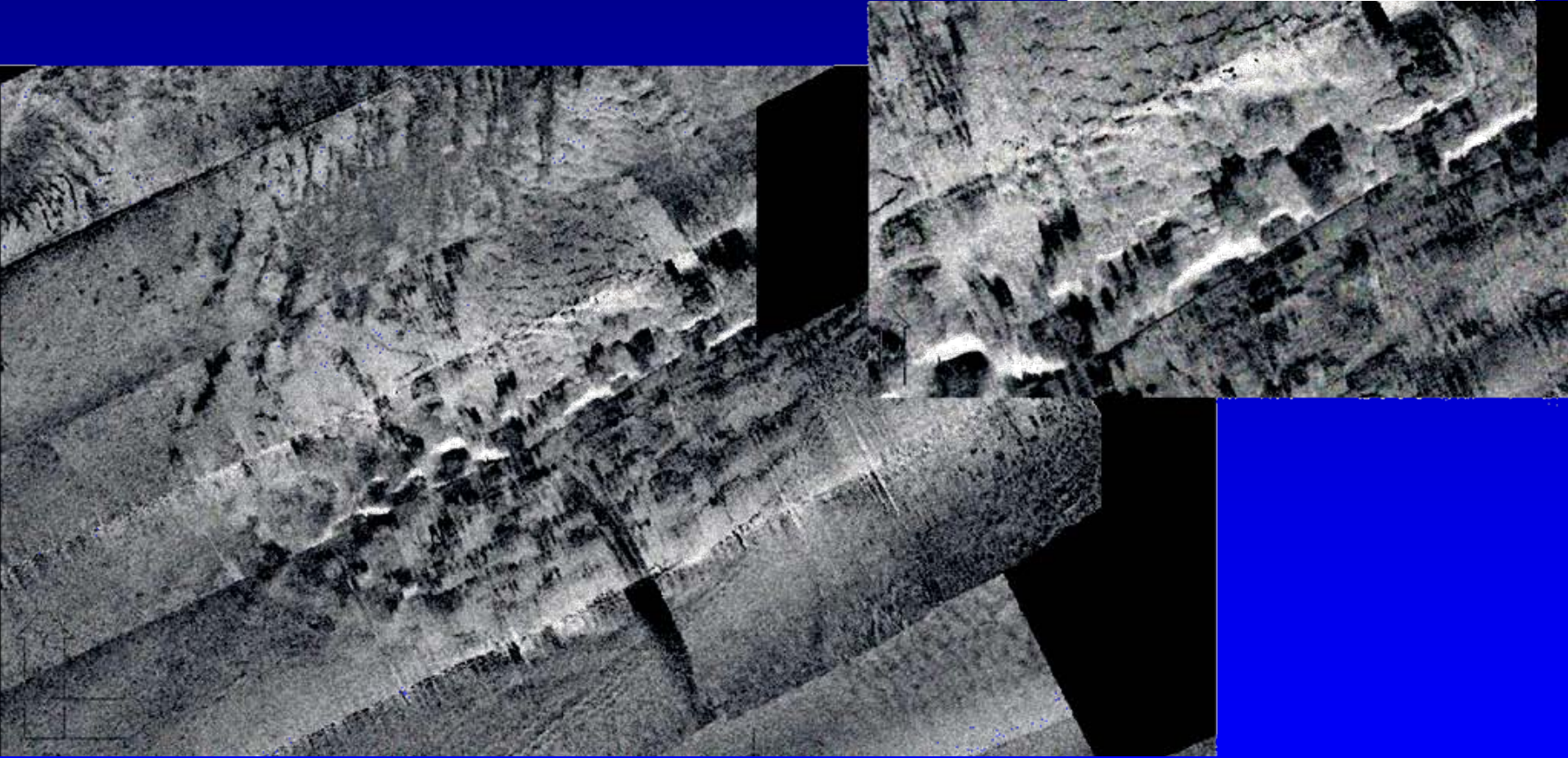


Megaripple e sand waves

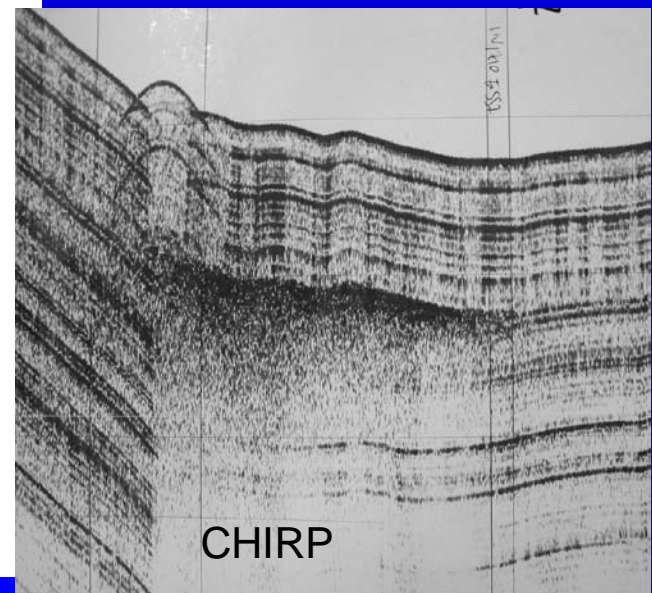
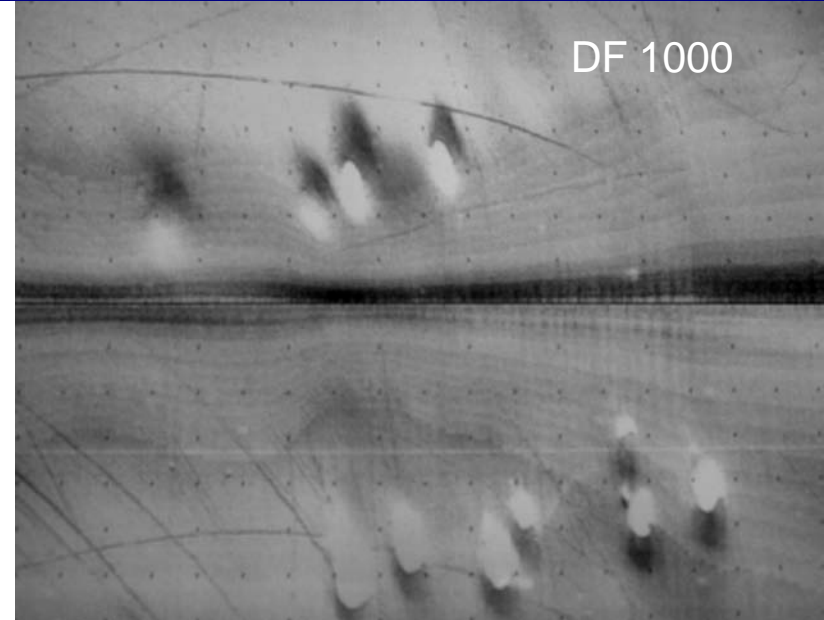
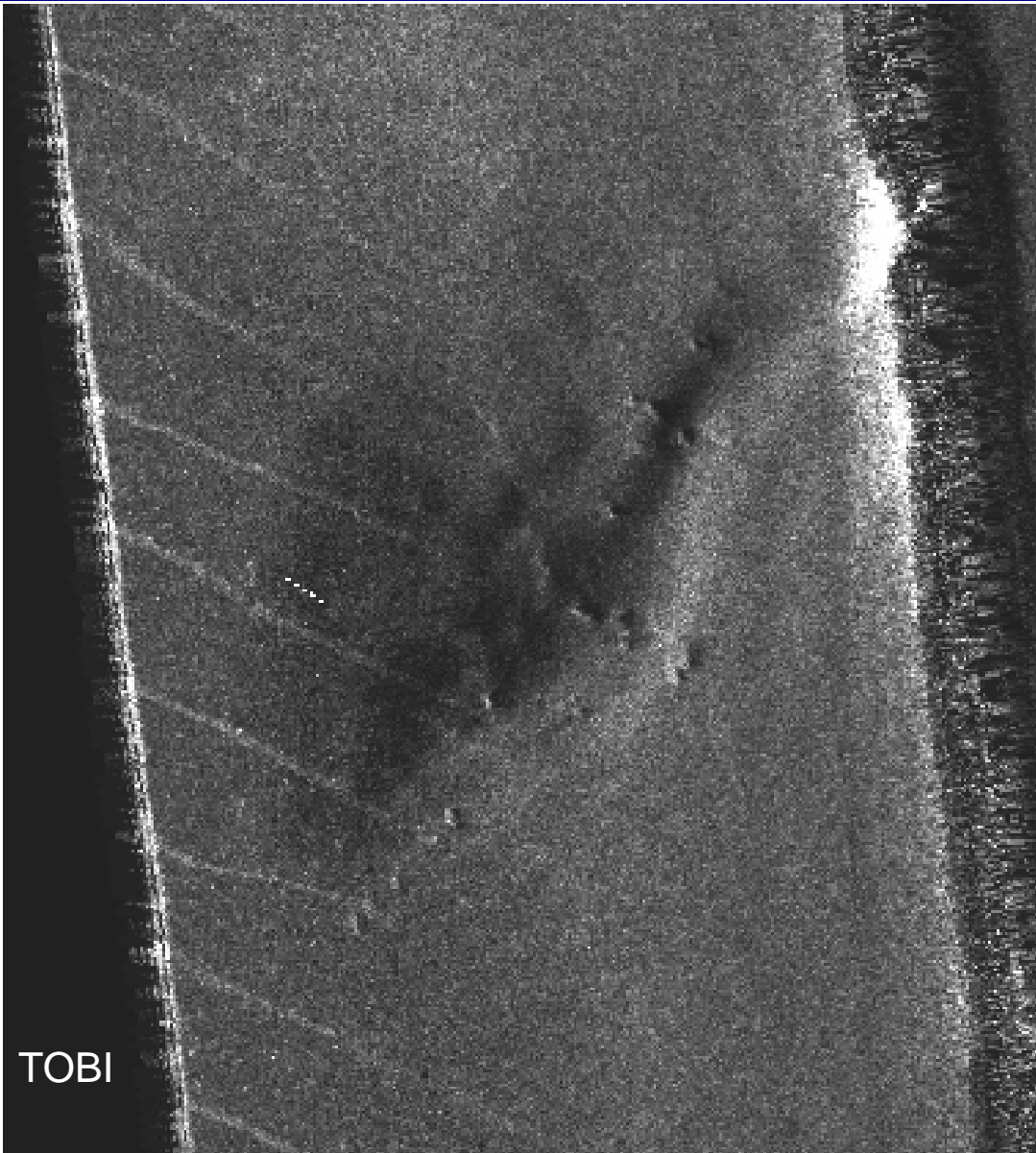
Fanerogame marine (Posidonia oceanica)



Frane sottomarine



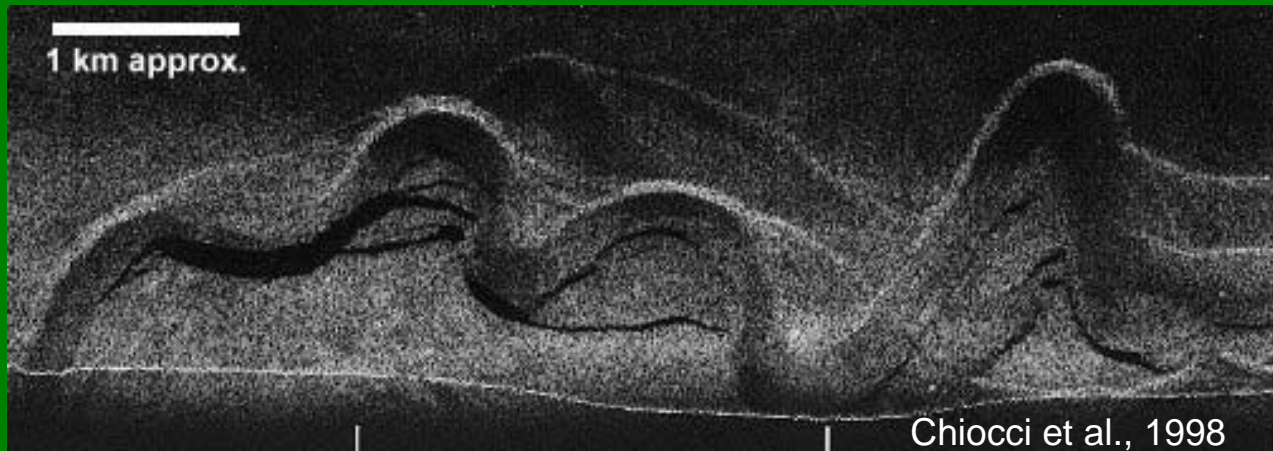
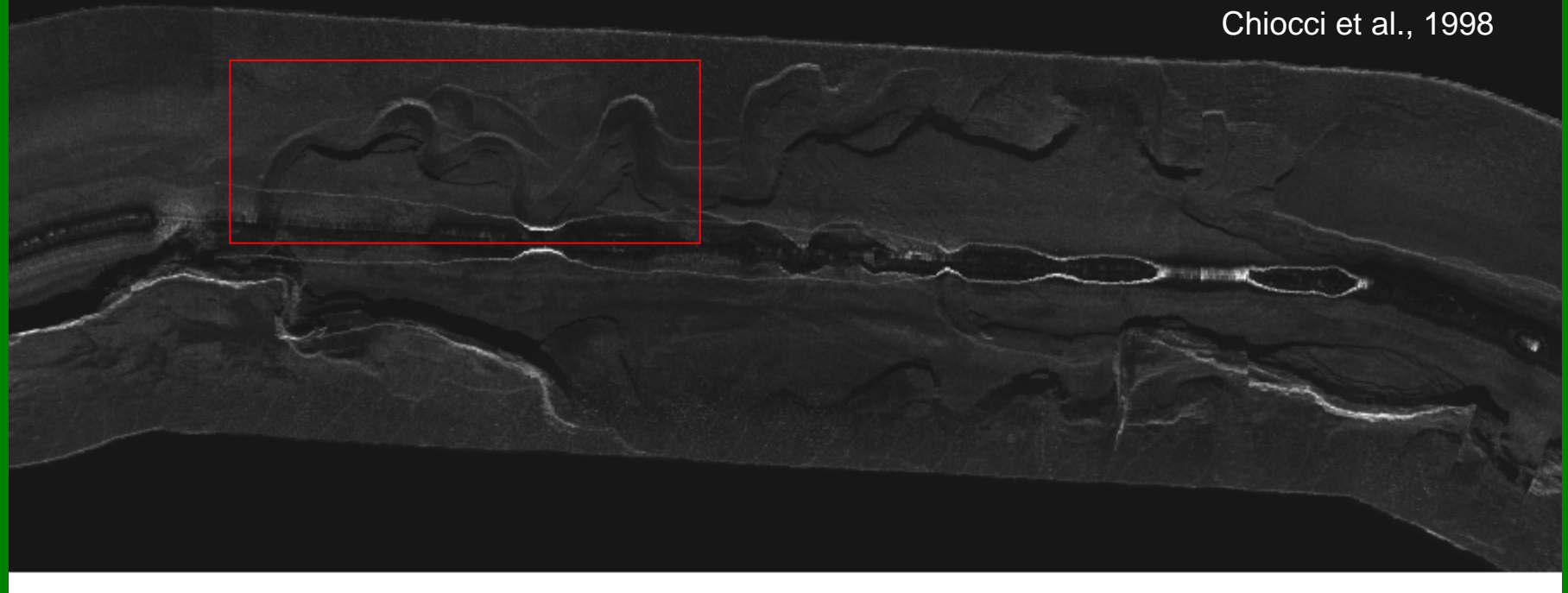
Depressioni da fuoriuscita di fluidi (pockmark)



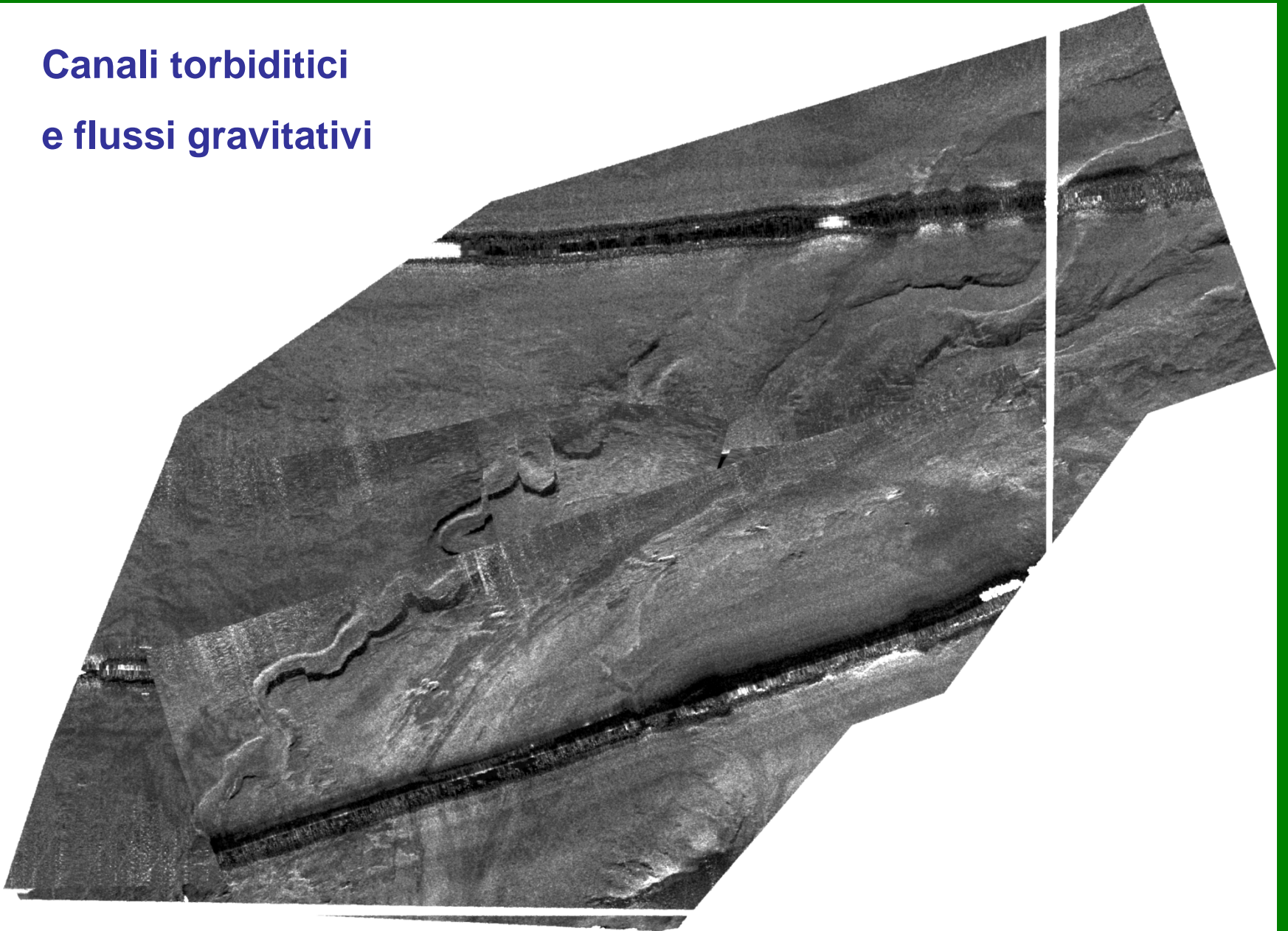
SCARPATA CONTINENTALE

Canyon di Mesima e di Gioia (margine calabro)

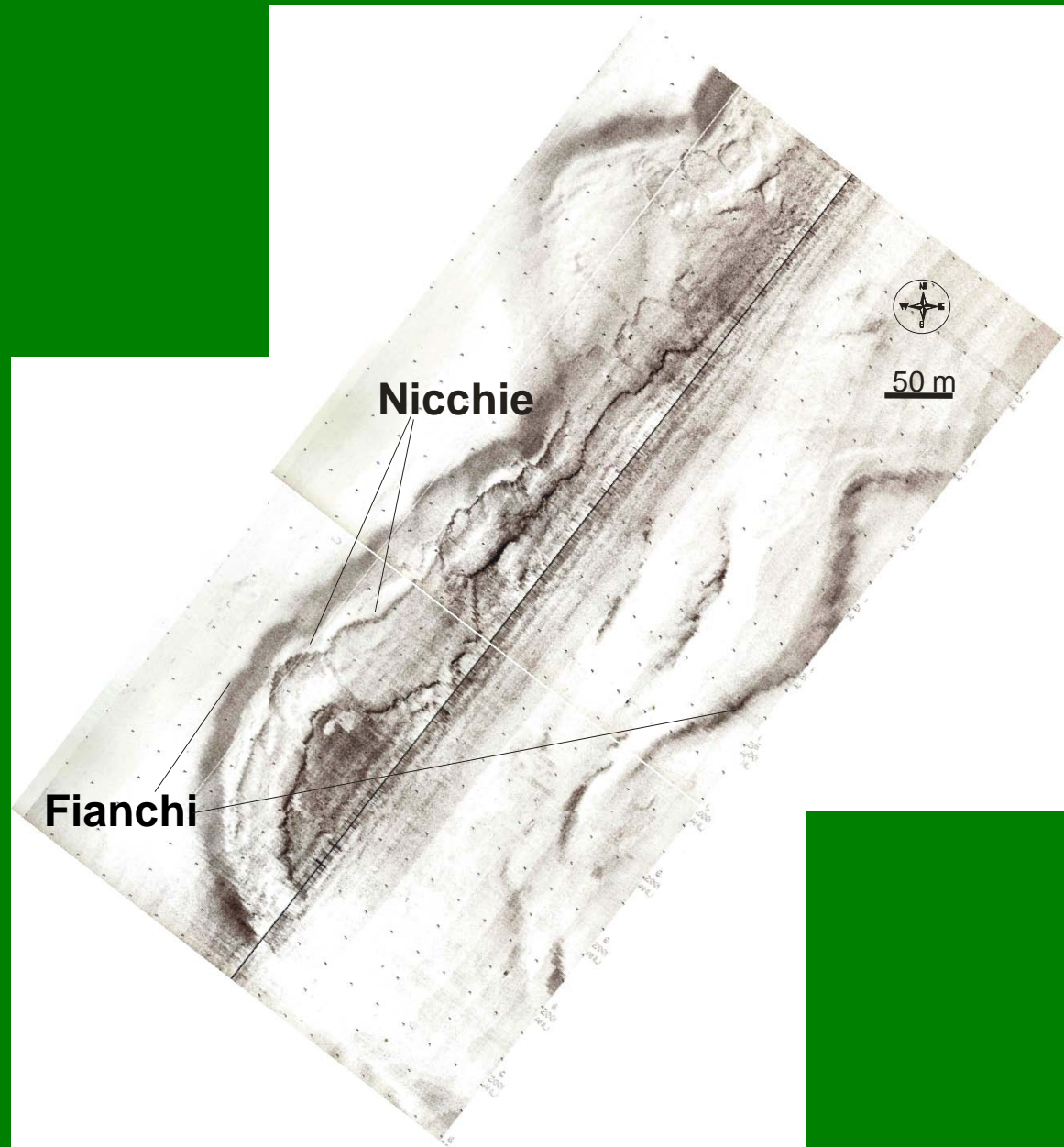
Chiocci et al., 1998



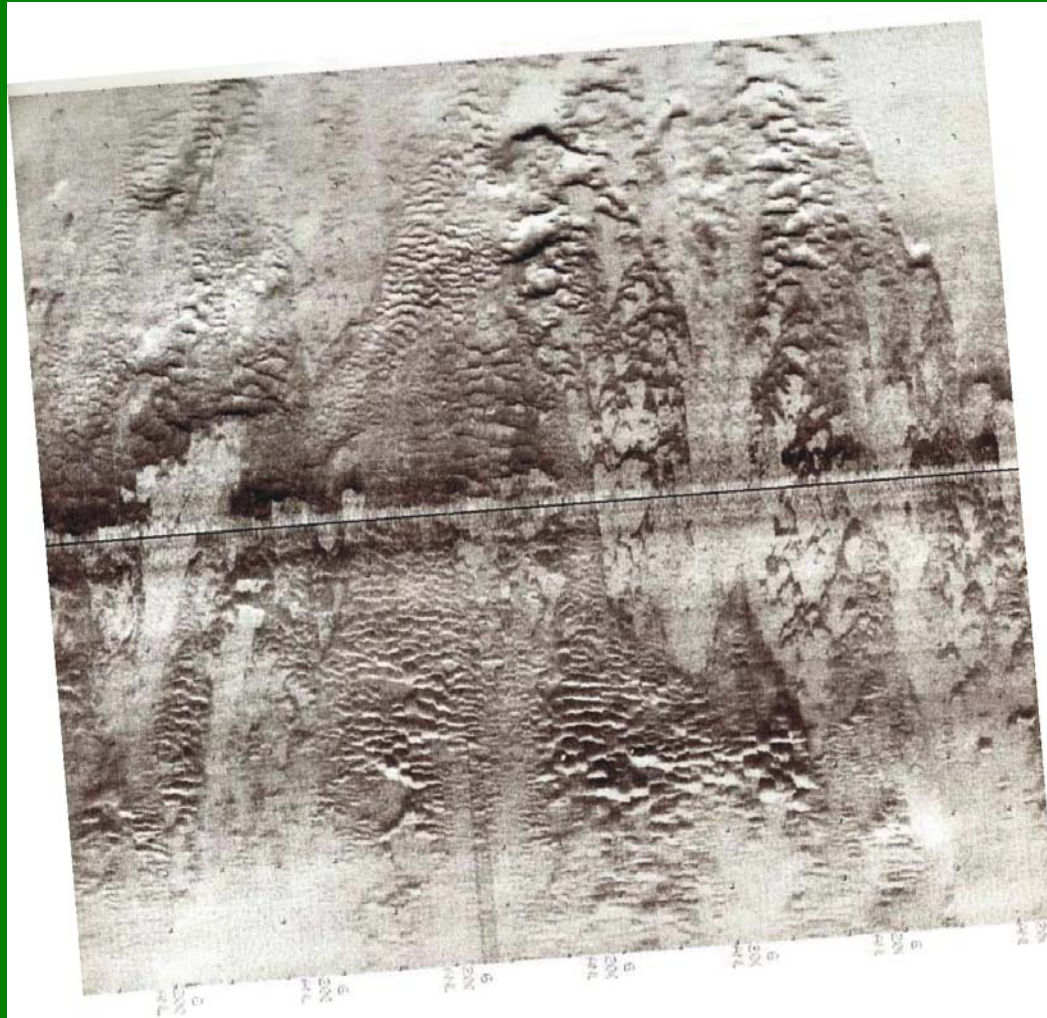
**Canali torbidity
e flussi gravitativi**



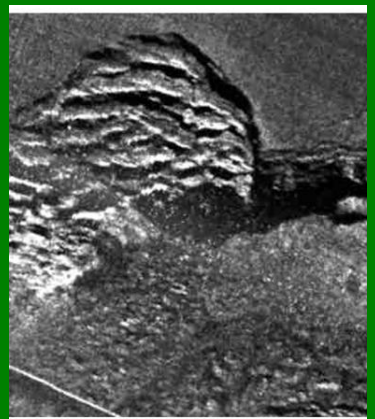
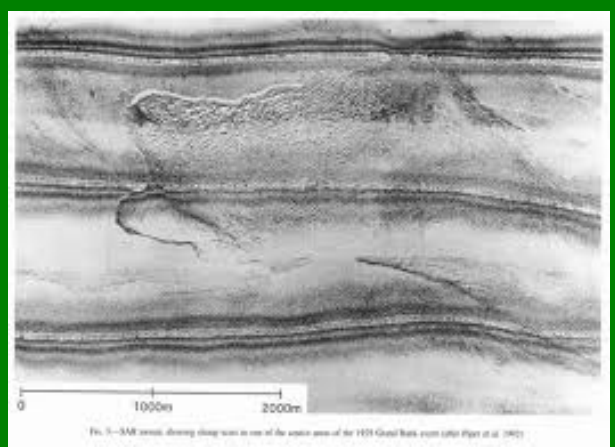
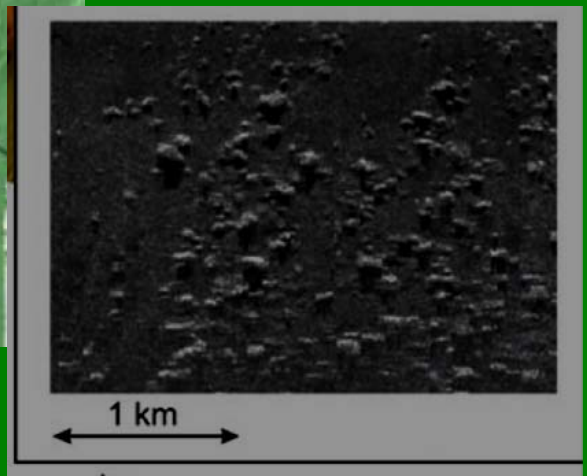
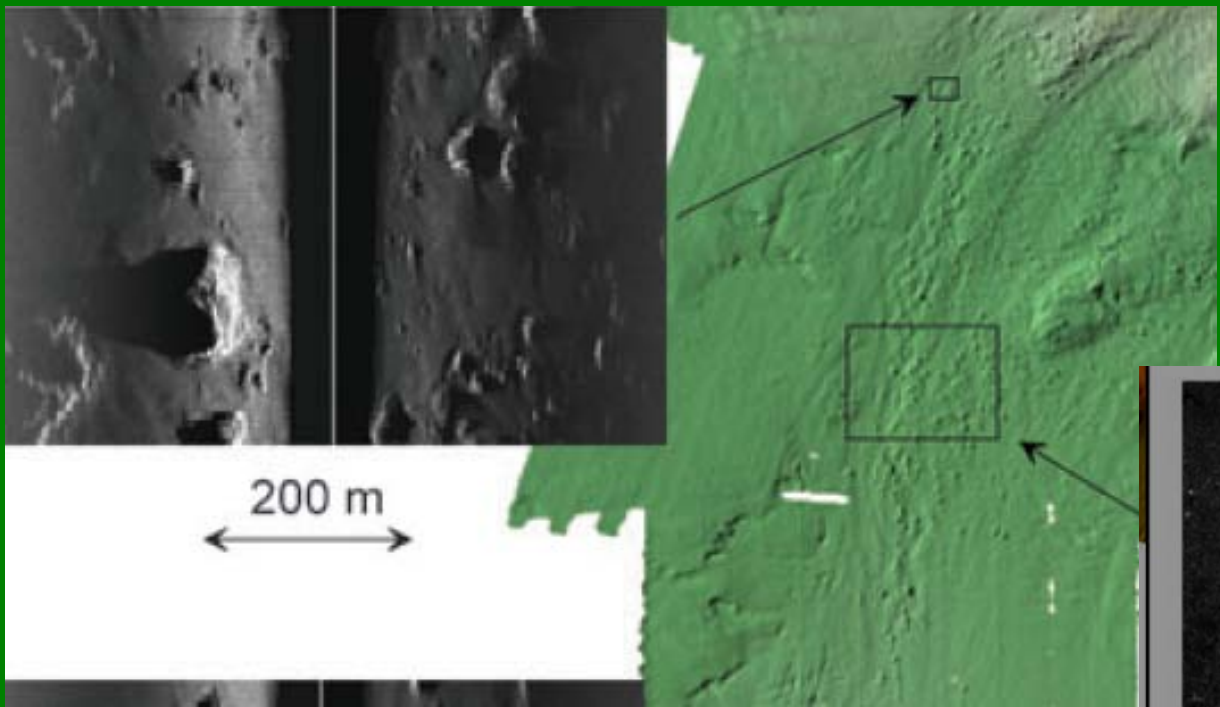
Canali torbidity



Forme di fondo e sediment patches



Debris avalanches e frane sottomarine



BACINO

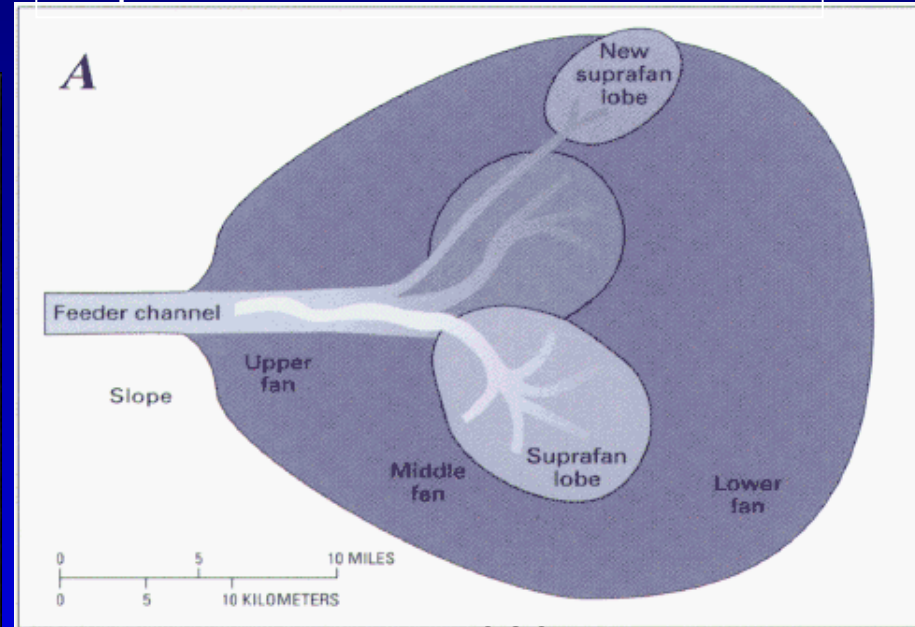


A) modello classico di una conoide sottomarina con depositi sabbiosi tabulari continui

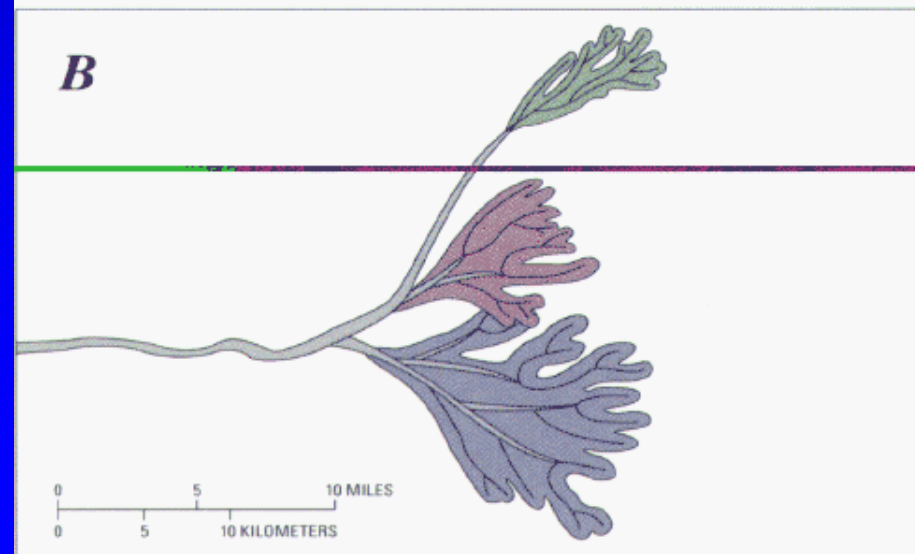
B) ricostruzione da dati SSS e carote: sviluppo complesso e discontinuo dei depositi sabbiosi

Immagine SSS (SeaMark)

Depositi torbidity

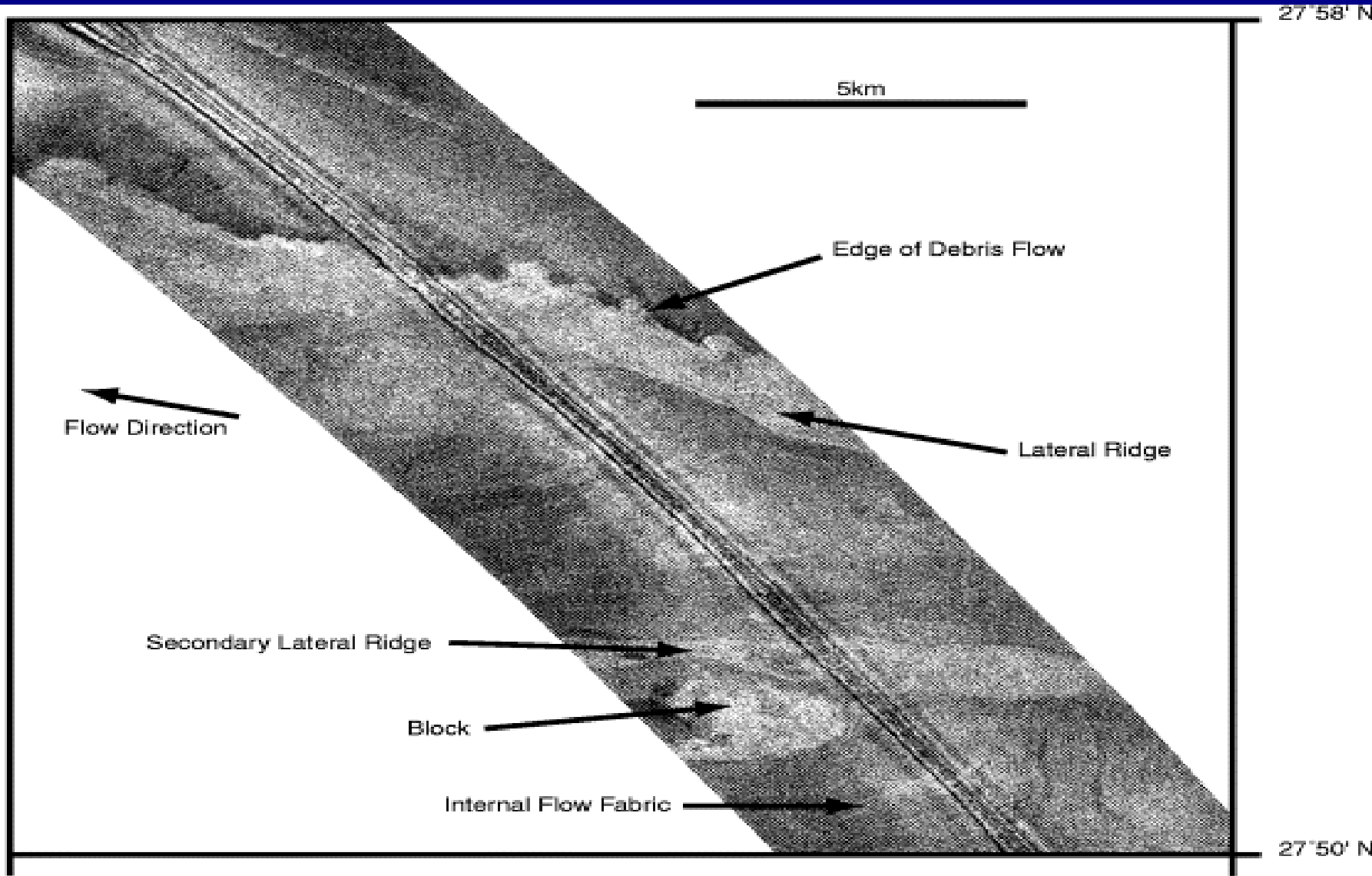


USGS web site

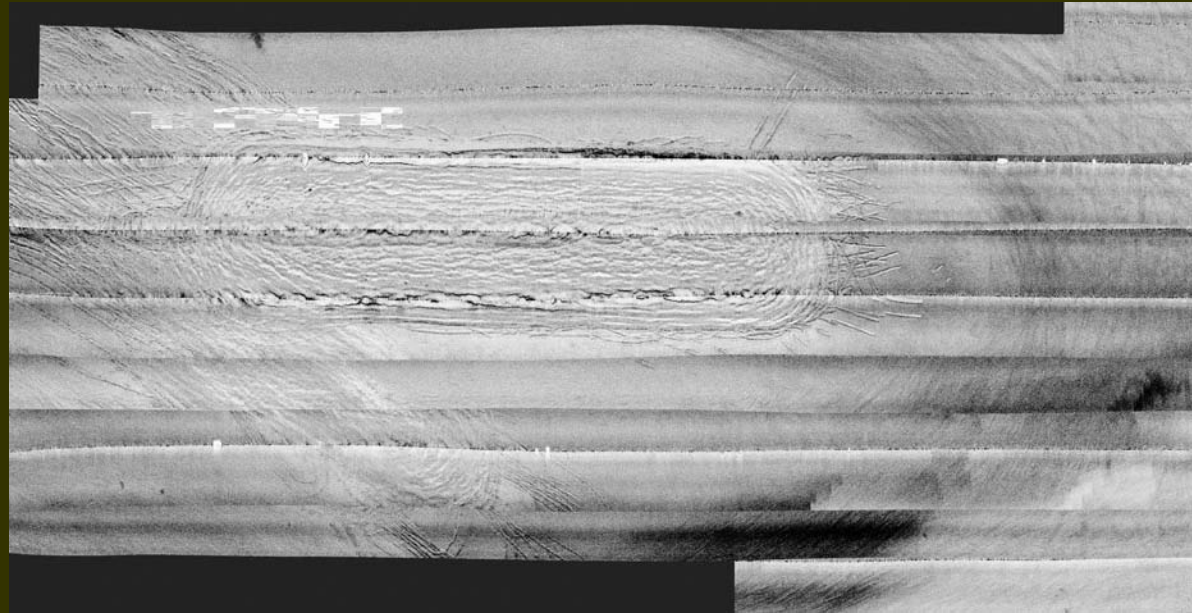
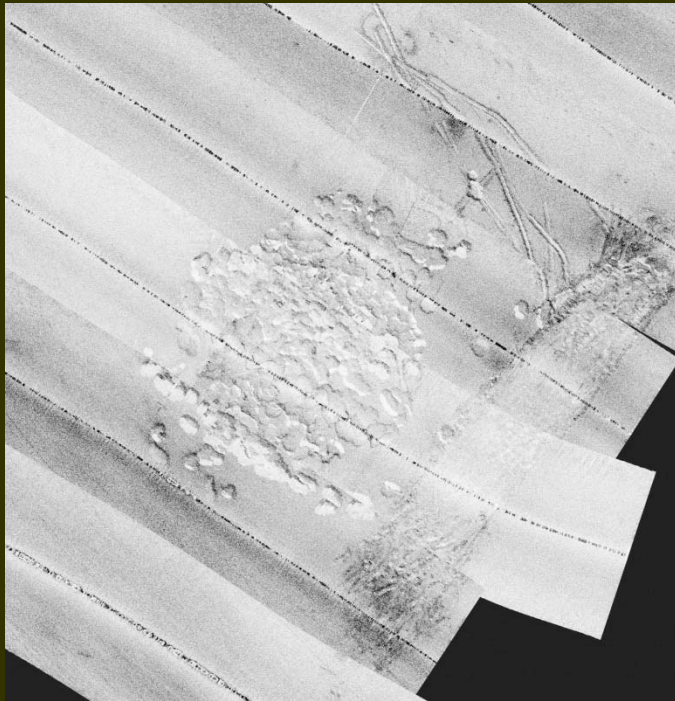
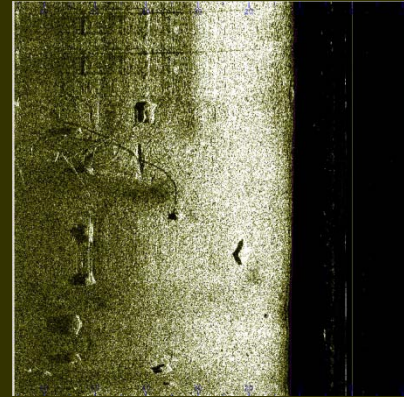


Debris flows

facies sonar a medio/alto backscatter
rafted blocks-lineazioni



STRUTTURE ANTROPICHE



Altri esempi, approfondimenti sul Side Scan Sonar.....

SOUND UNDERWATER IMAGES



A Guide to the Generation and Interpretation
of Side Scan Sonar Data

JOHN PERRY FISH

H. ARNOLD CARR

Limited Edition

SOUND REFLECTIONS



Advanced Applications of Side Scan Sonar



JOHN PERRY FISH

H. ARNOLD CARR

The HANDBOOK of SIDESCAN SONAR

Philippe Blondel

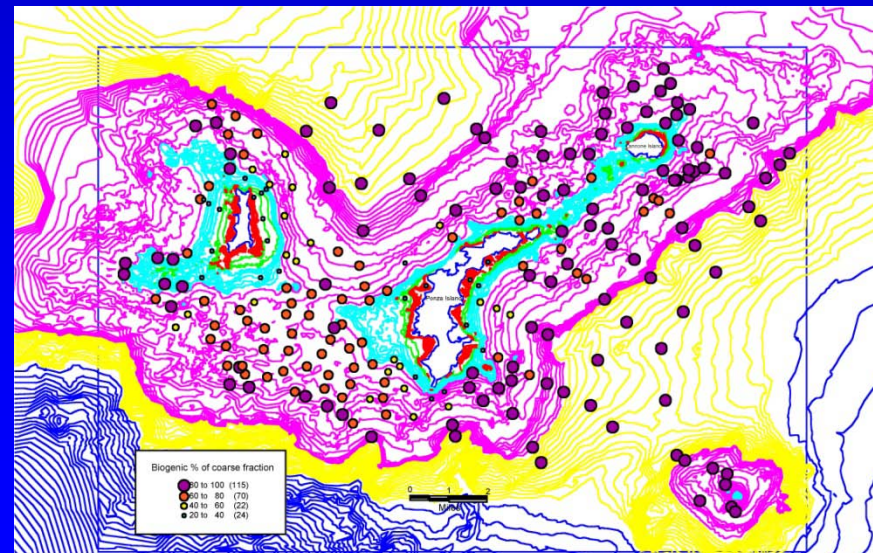
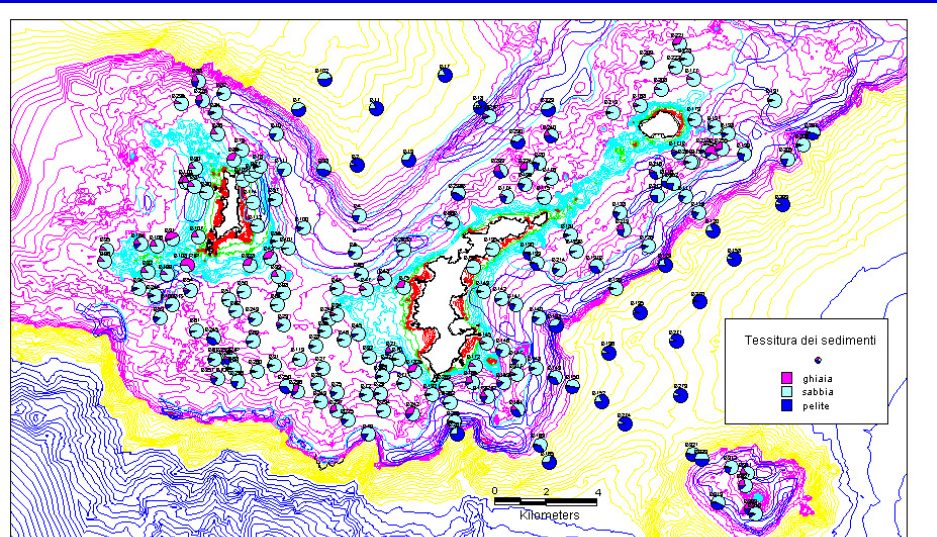
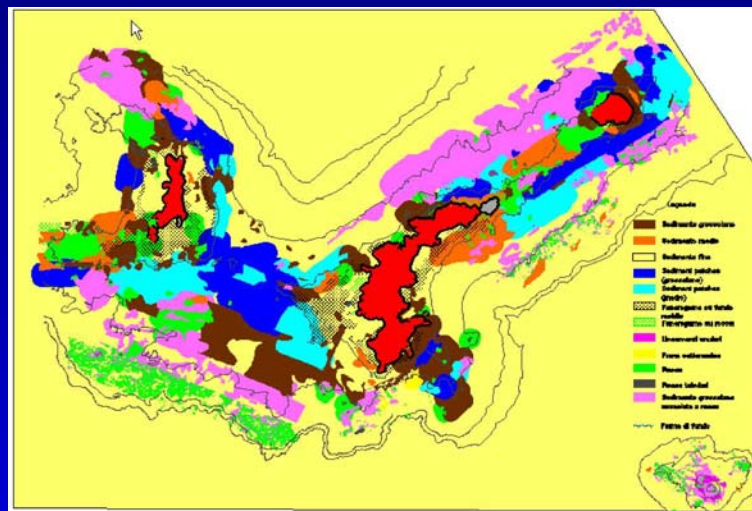


Springer

FEA

INTEGRAZIONE DATI SSS E CAMPIONAMENTI

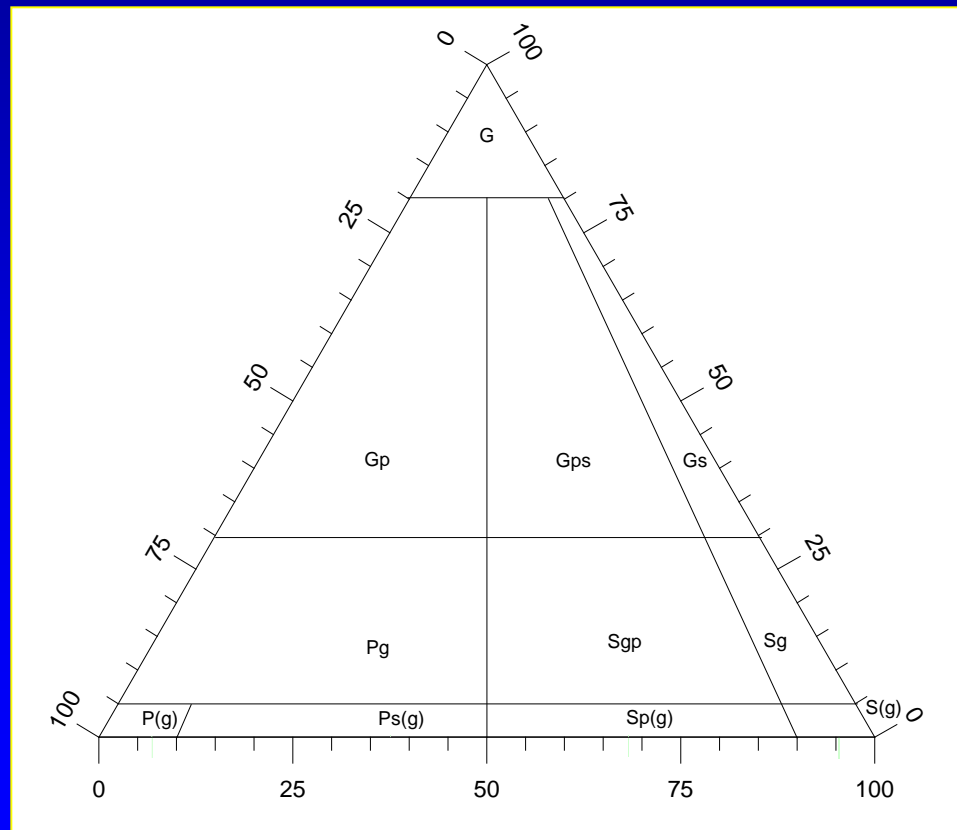
(anche ROV, dragaggi, ispezioni subacquee)



Caratterizzazione dei sedimenti affioranti

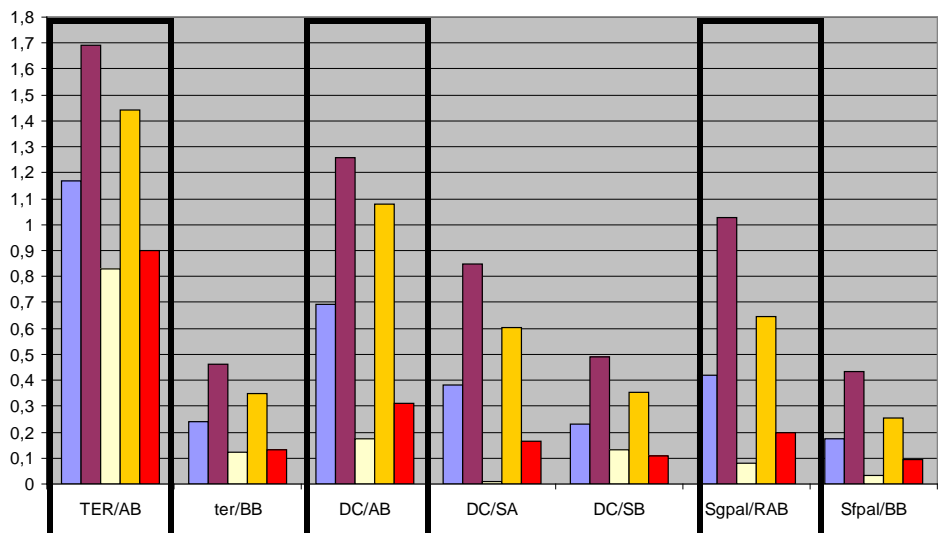
Diagramma triangolare di Folk

- ghiaia-sabbia-pelite
- sabbia-limo-argilla

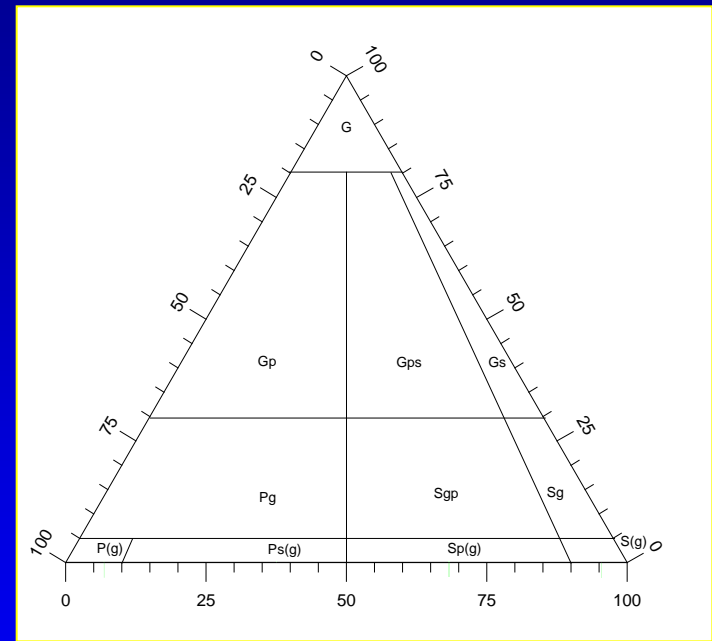


D50

ghiaia	> 2 mm	
sabbia molto gross.	1-2 mm	
sabbia gross.	0.5-1 mm	
sabbia media	0.25-0.5 mm	passaggio AB/BB
sabbia fine	0.125-0.25 mm	
sabbia molto fine	0.125-0.064 mm	
pelite	< 0.064 mm	

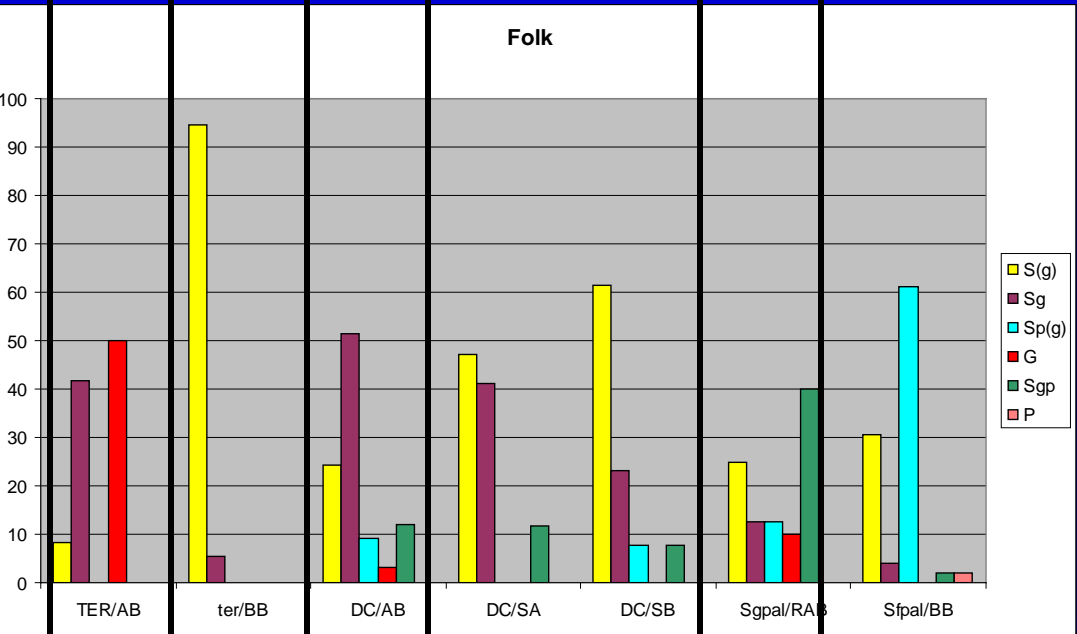


D50medio > 0.4 mm



ALTO BACKSCATTER

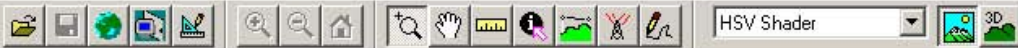
Folk







Ghiaia G

Sabbia con ghiaia Sg

Sabbia ghiaioso-pelitica Sgp



Global Mapper

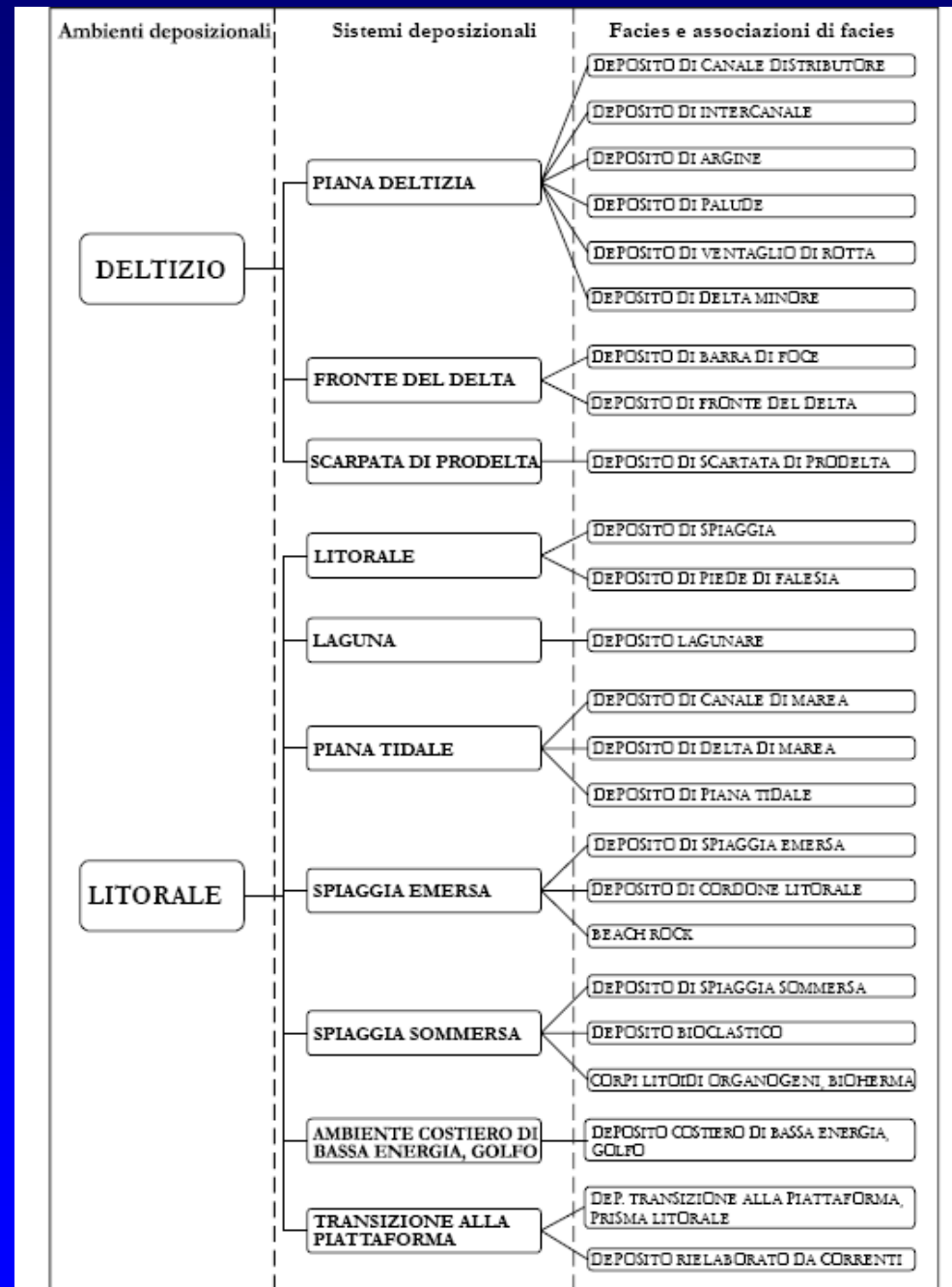
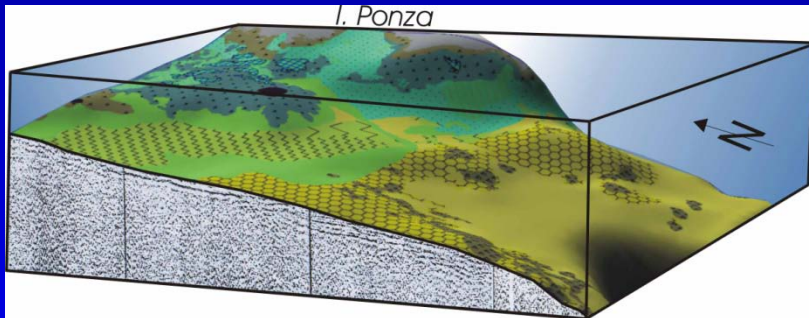
-  **Open Your Own Data Files**
(Menu Command: File->Open Data File)
-  **Find Data Online**
(Menu Command: File->Find Data Online)
- Download Free Maps/Imagery from Online Sources**
(Menu Command: File->Download Online Imagery/Topo Maps)
-  **Display Settings/Projection**
(Menu Command: Tools->Configuration)
-  **Manage Loaded Data**
(Menu Command: Tools->Control Center)

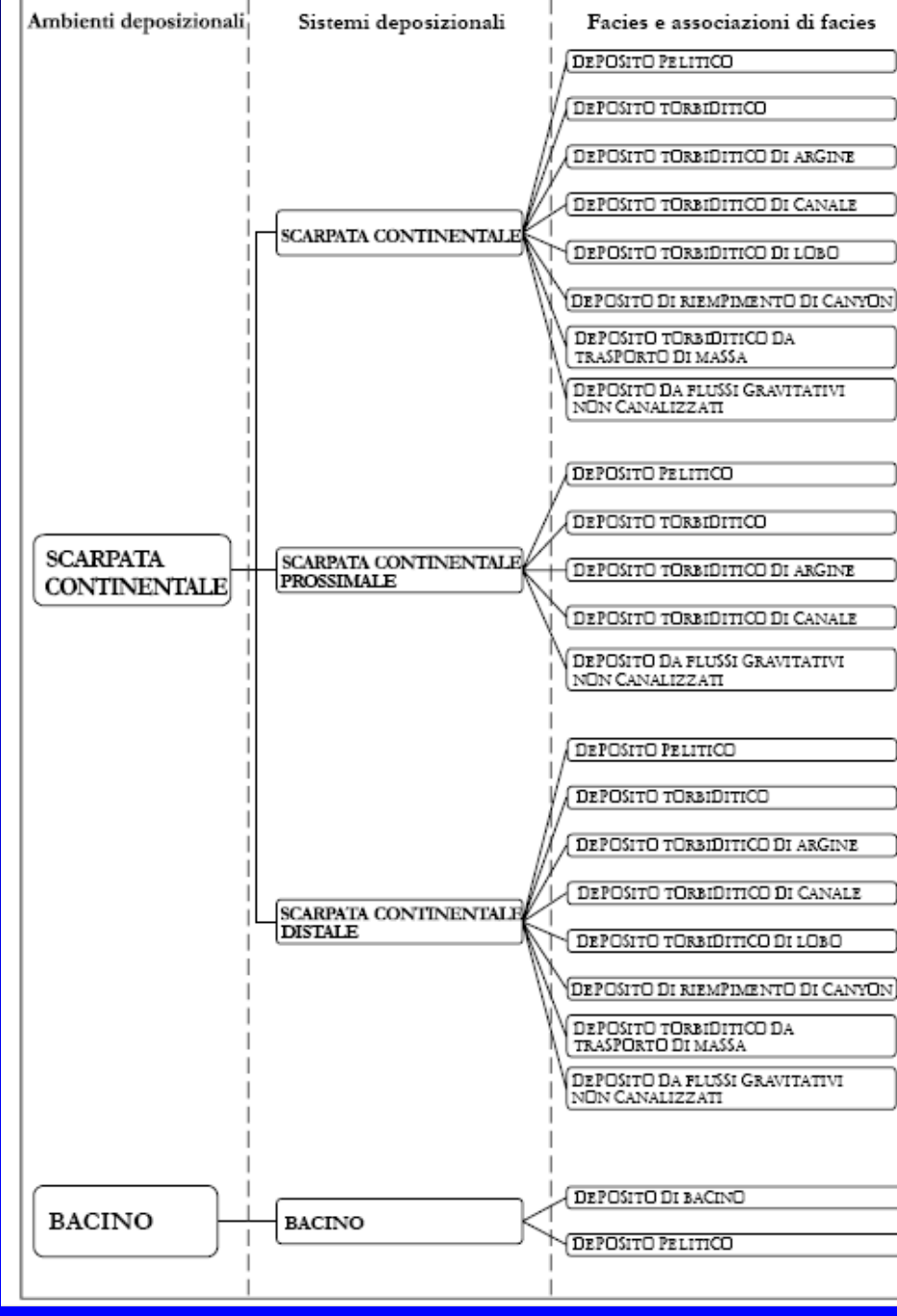
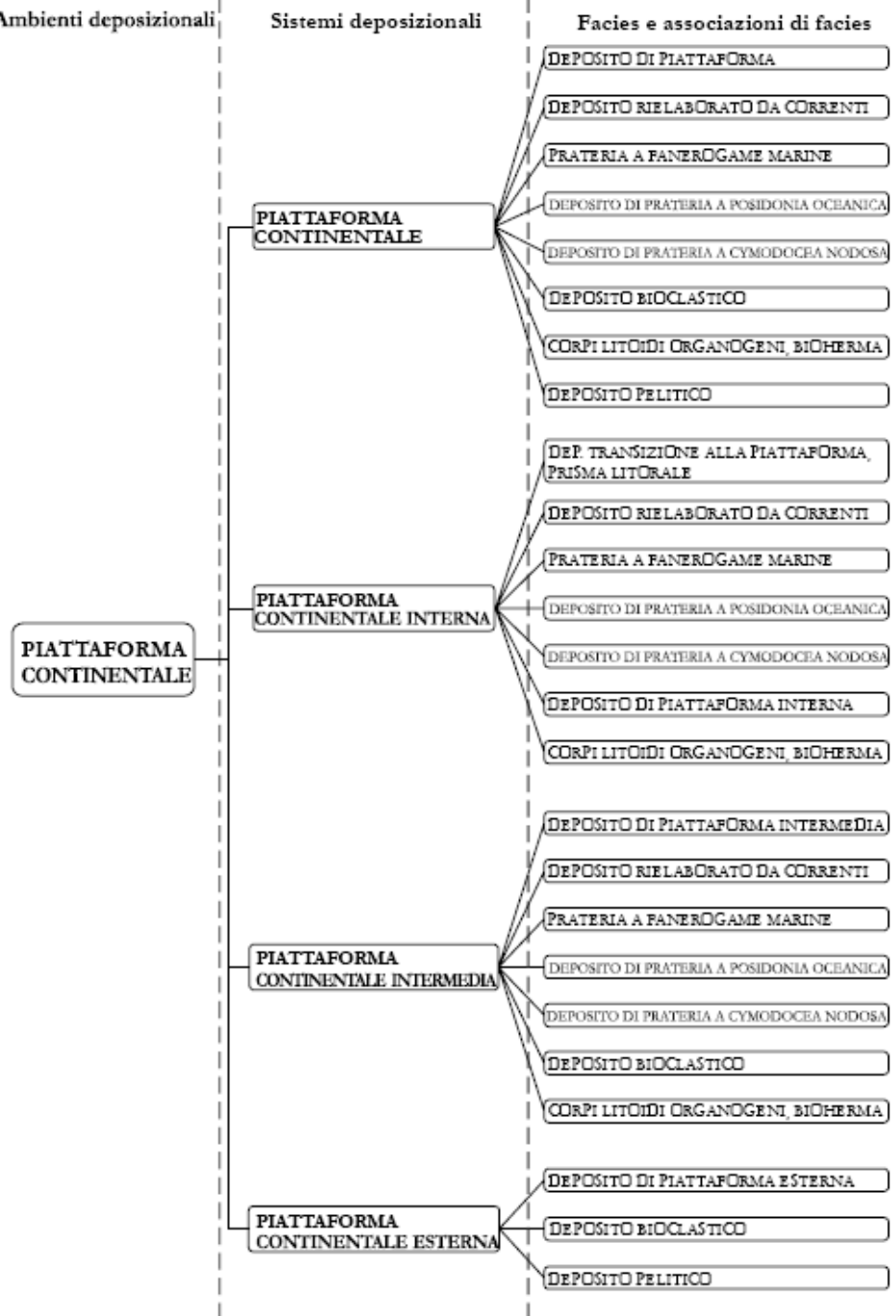
MARINE GEOHAZARDS ALONG THE ITALIAN COASTS
PROGETTO MAGIC
www.magicproject.it



Mapping Help
(see also the Help Menu)

SISTEMI DEPOSIZIONALI

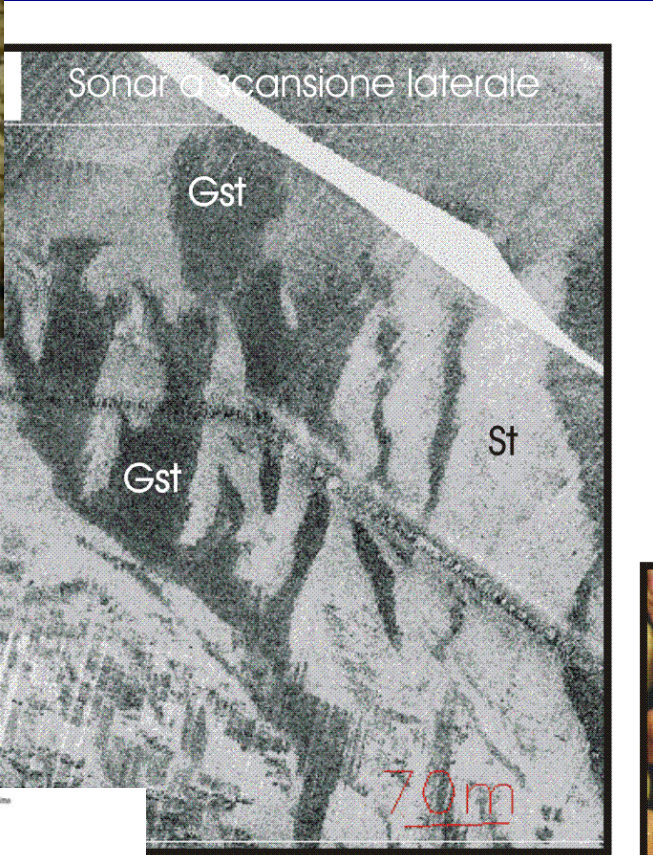




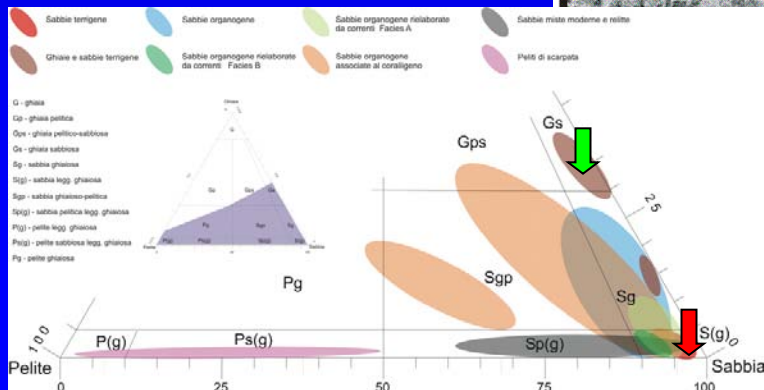
B76 E Palmarola (20 m w.d.)

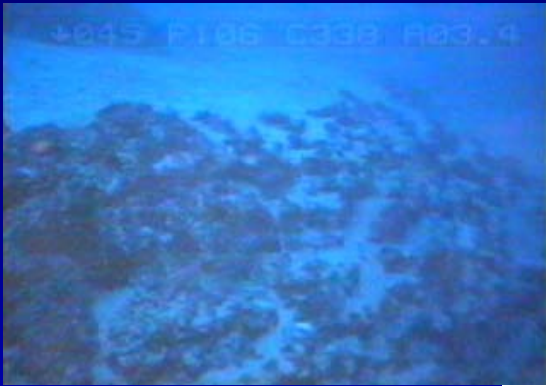


Sabbia terrigena

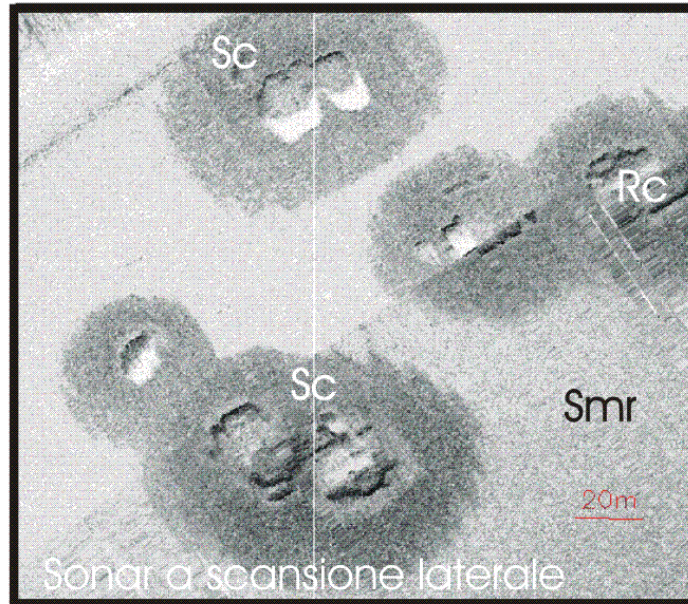


Ghiaia e sabbia terrigena



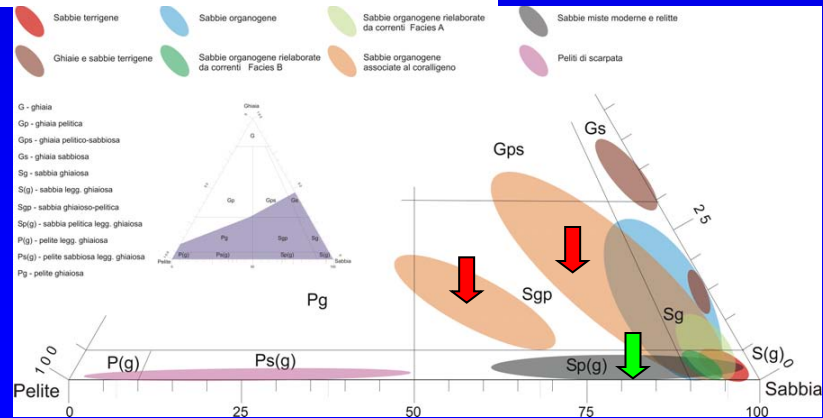


Alto backscatter associato al coralligeno



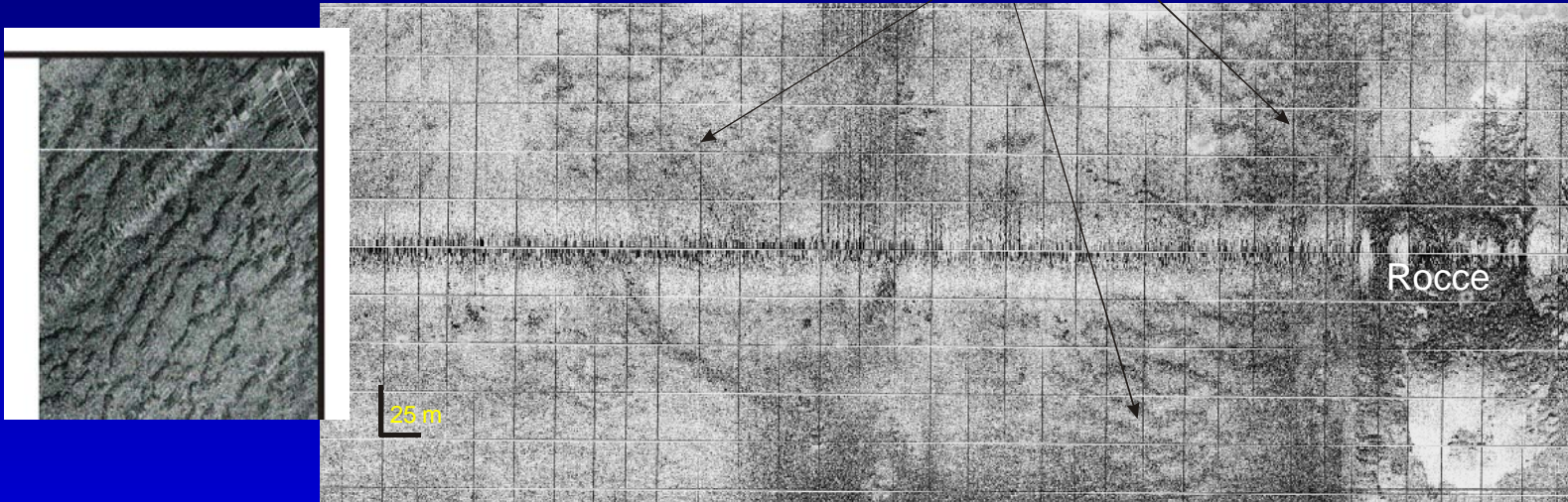
Smr
Sabbie palinestese

Sc
Sabbie bioclastiche associate al coralligeno



Zonazioni di sedimento

backscatter zonato



Sabbie bioclastiche rielaborate da corrente

