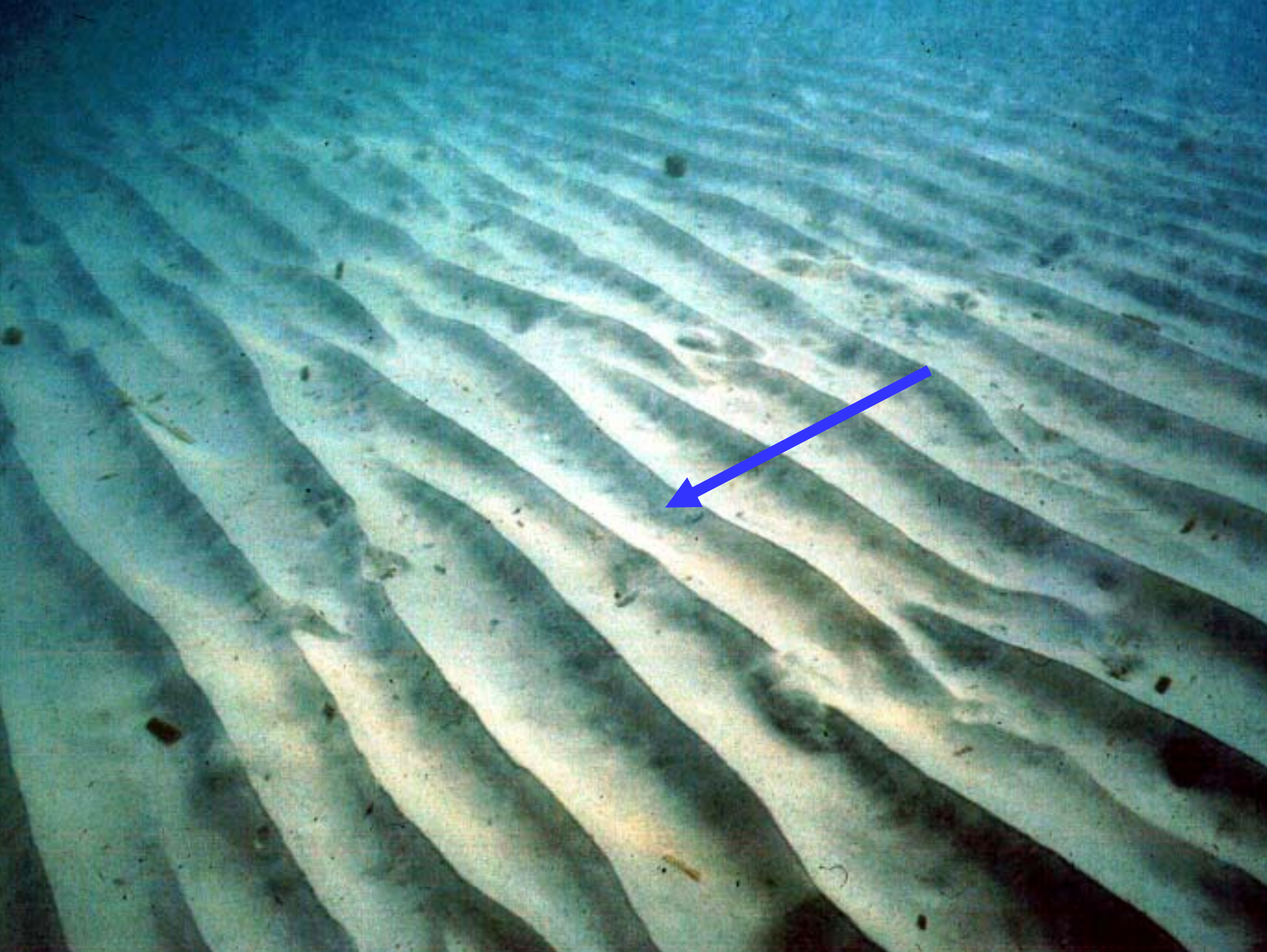


25 m

*megaripple*













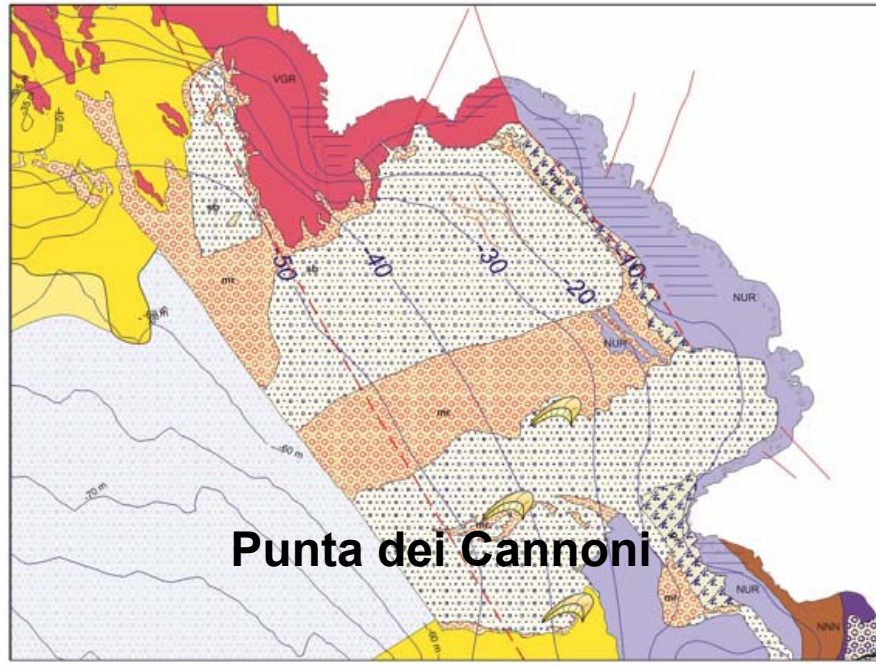
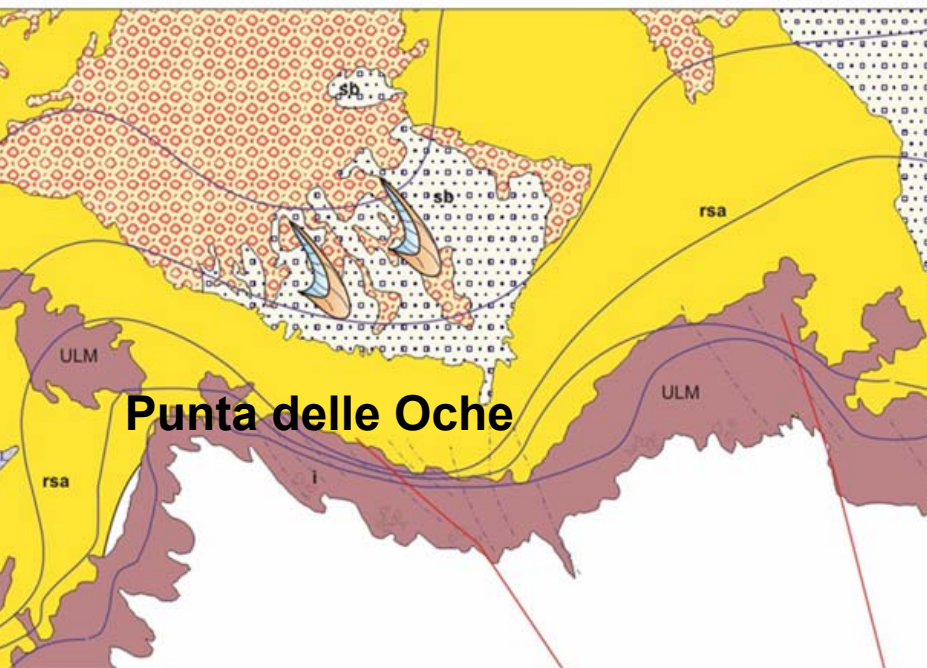
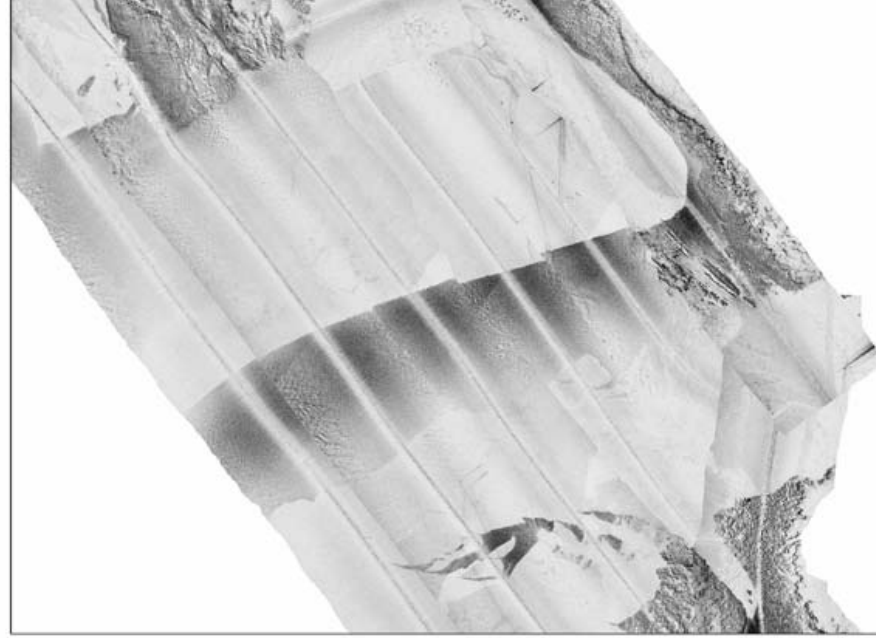
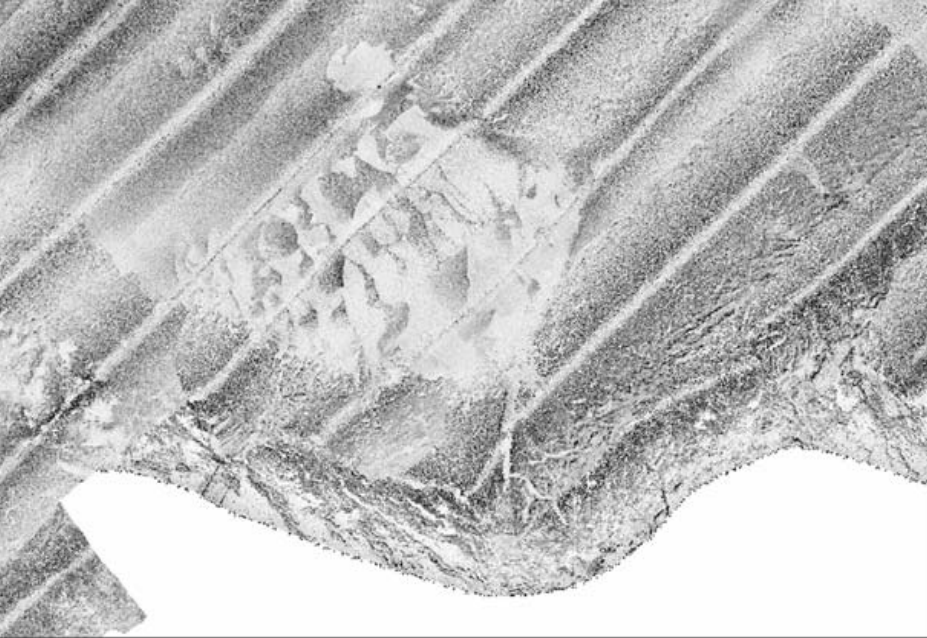
*Punta Senoglia*

*Isole di Cala Vinagra*

**Foglio 563**  
**Isole di S. Pietro**

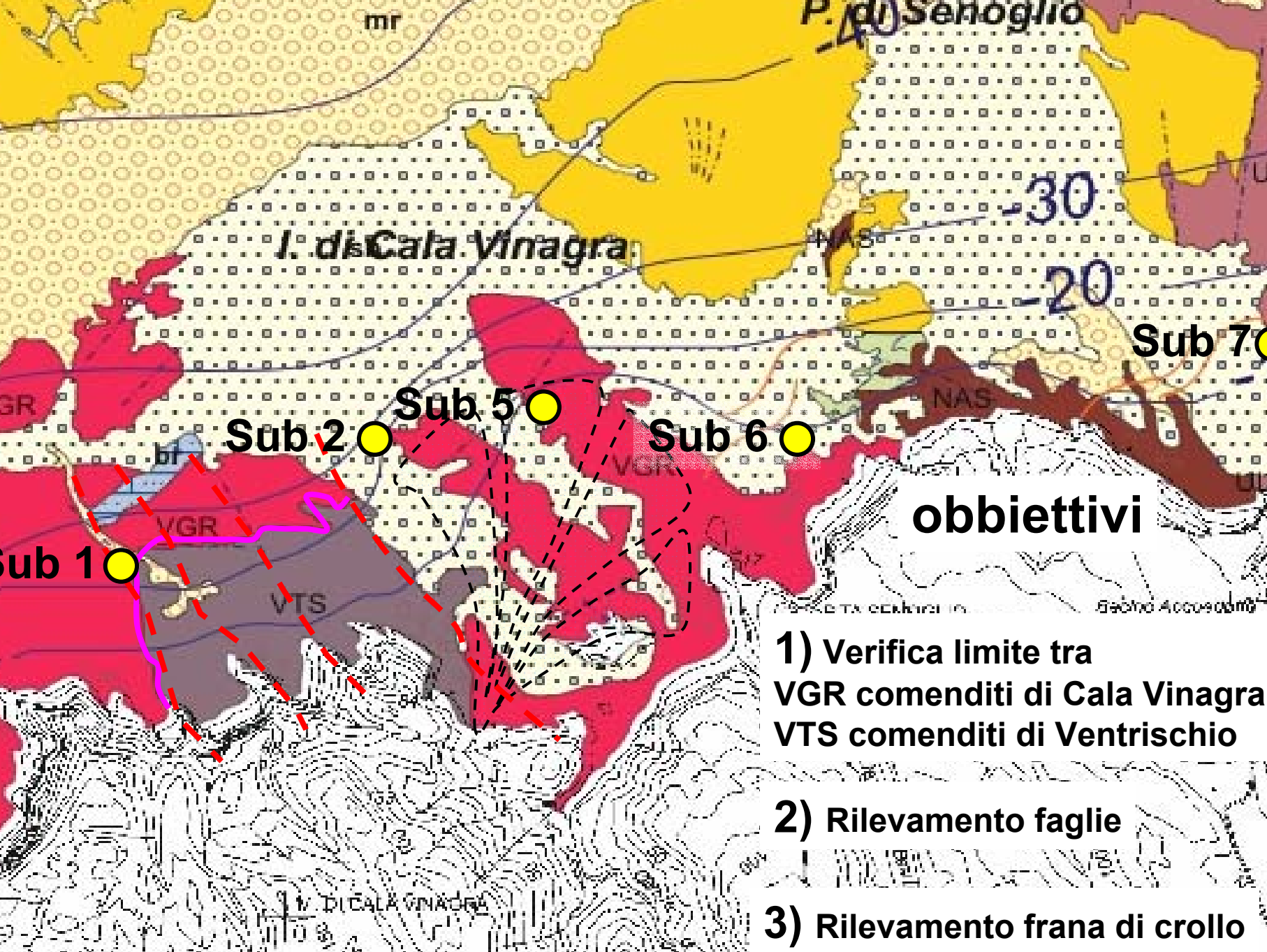












## obiettivi

- 1) Verifica limite tra VGR comenditi di Cala Vinagra VTS comenditi di Ventrischio
- 2) Rilevamento faglie
- 3) Rilevamento frana di crollo







*Cala Vinagra – 12 m  
frana di crollo*



**Cala Vinagra – 10 m**

**Rilevamento delle Comenditi**

**GR – Comenditi di Cala Vinagra**







**direzione corrente**

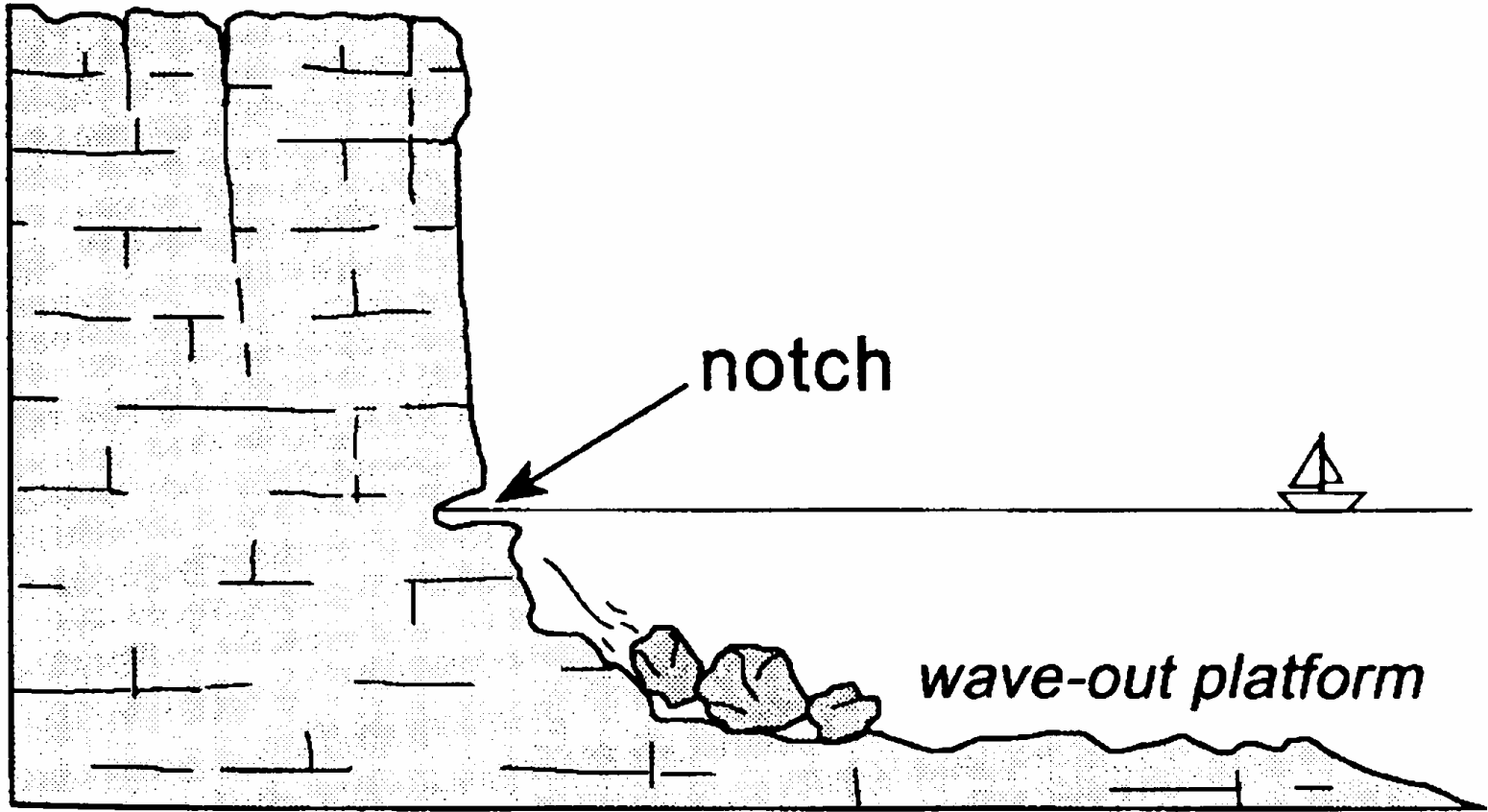




Capo Figa



Foglio 412  
"Arzachena"















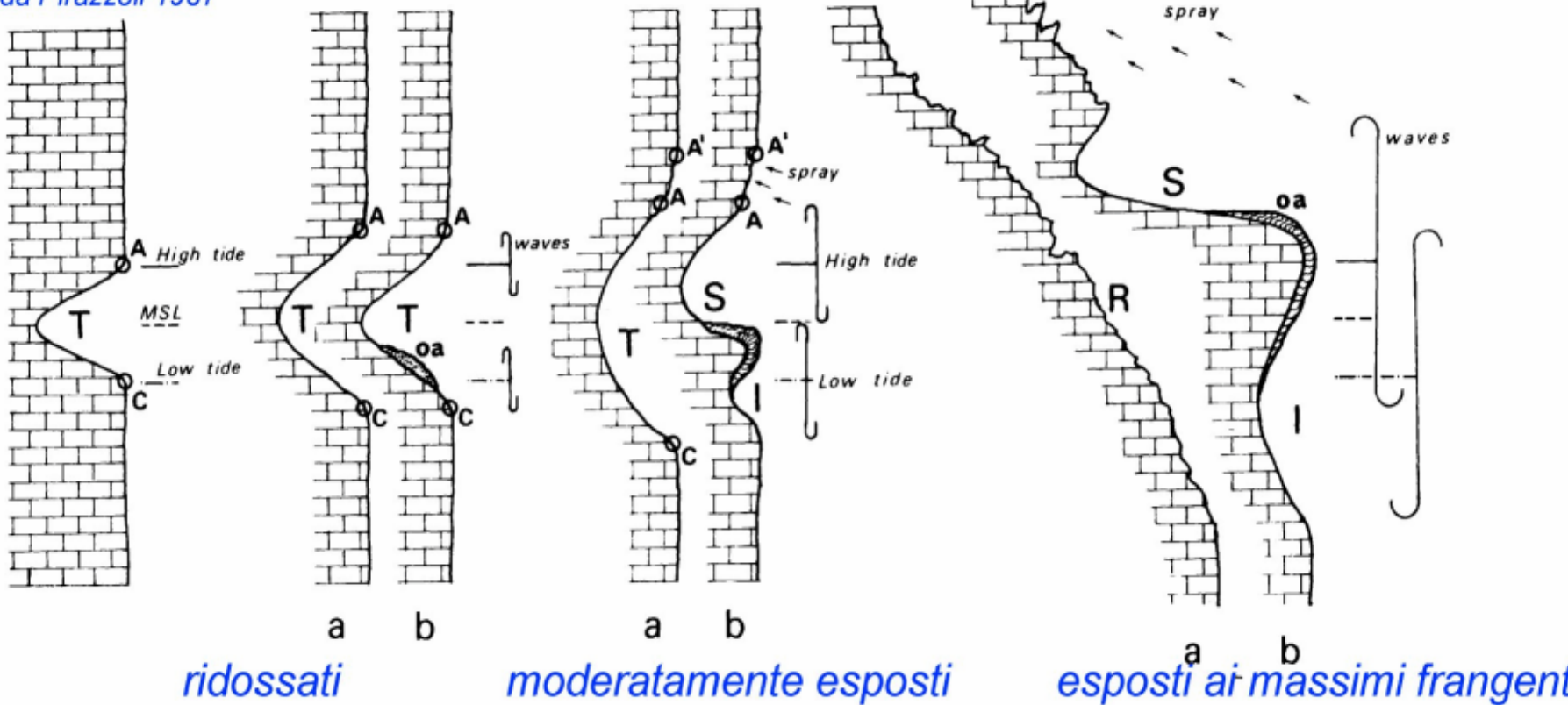




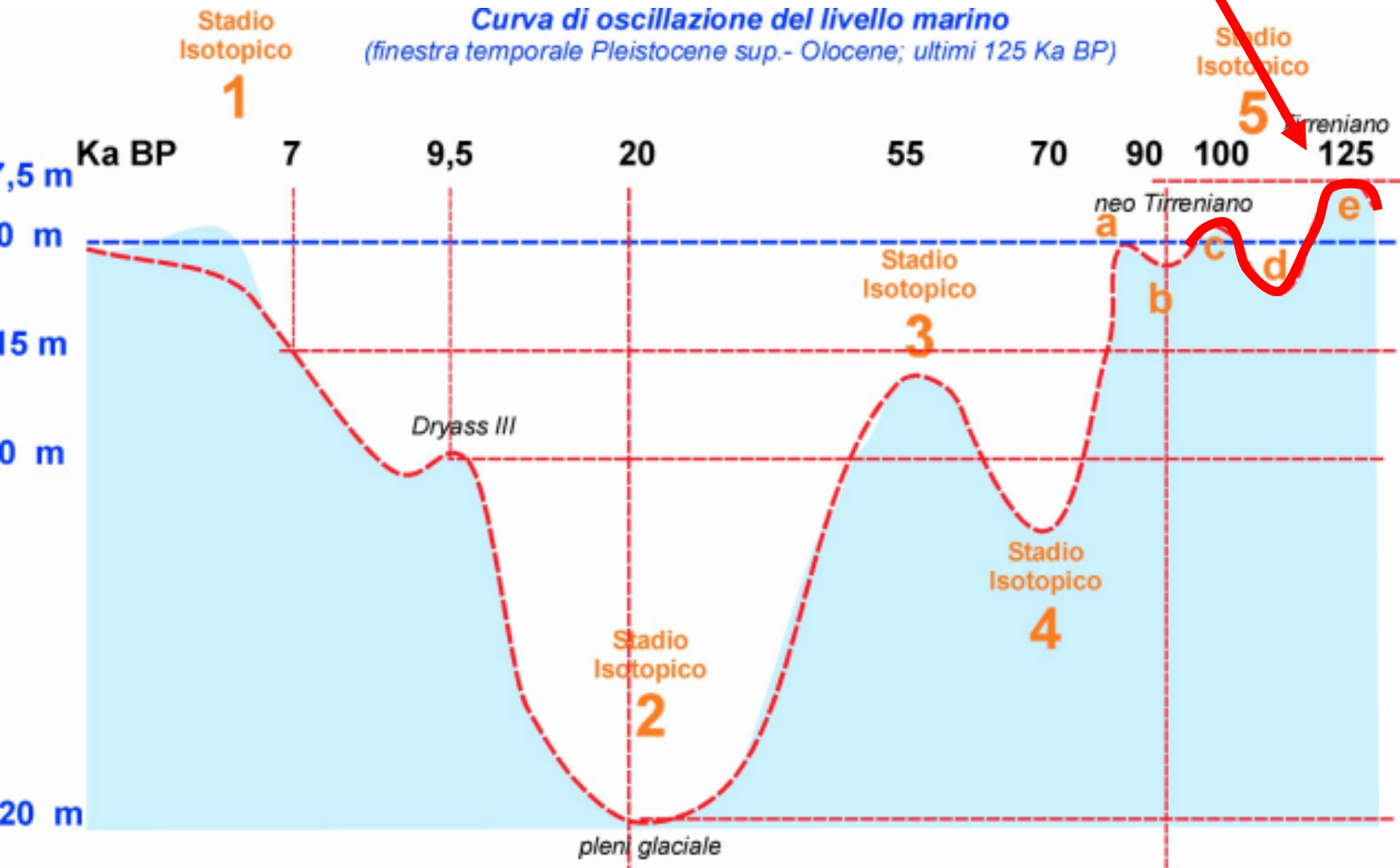


## tipologie di solco di battente

da Pirazzoli 1987



# Curva di oscillazione del livello marino (finestra temporale Pleistocene sup. - Olocene; ultimi 125 Ka BP)







**Foglio 500  
Nuoro Est**

**Foglio 501  
Orosei**

**SERVIZIO GEOLOGICO  
NAZIONALE**

***Paolo LEMBO  
Alfredo PANTALEONE  
Lucia SACCHI  
Silvana D'ANGELO  
Felicia Papasodaro***

**UNIVERSITA' DI CAGLIARI**

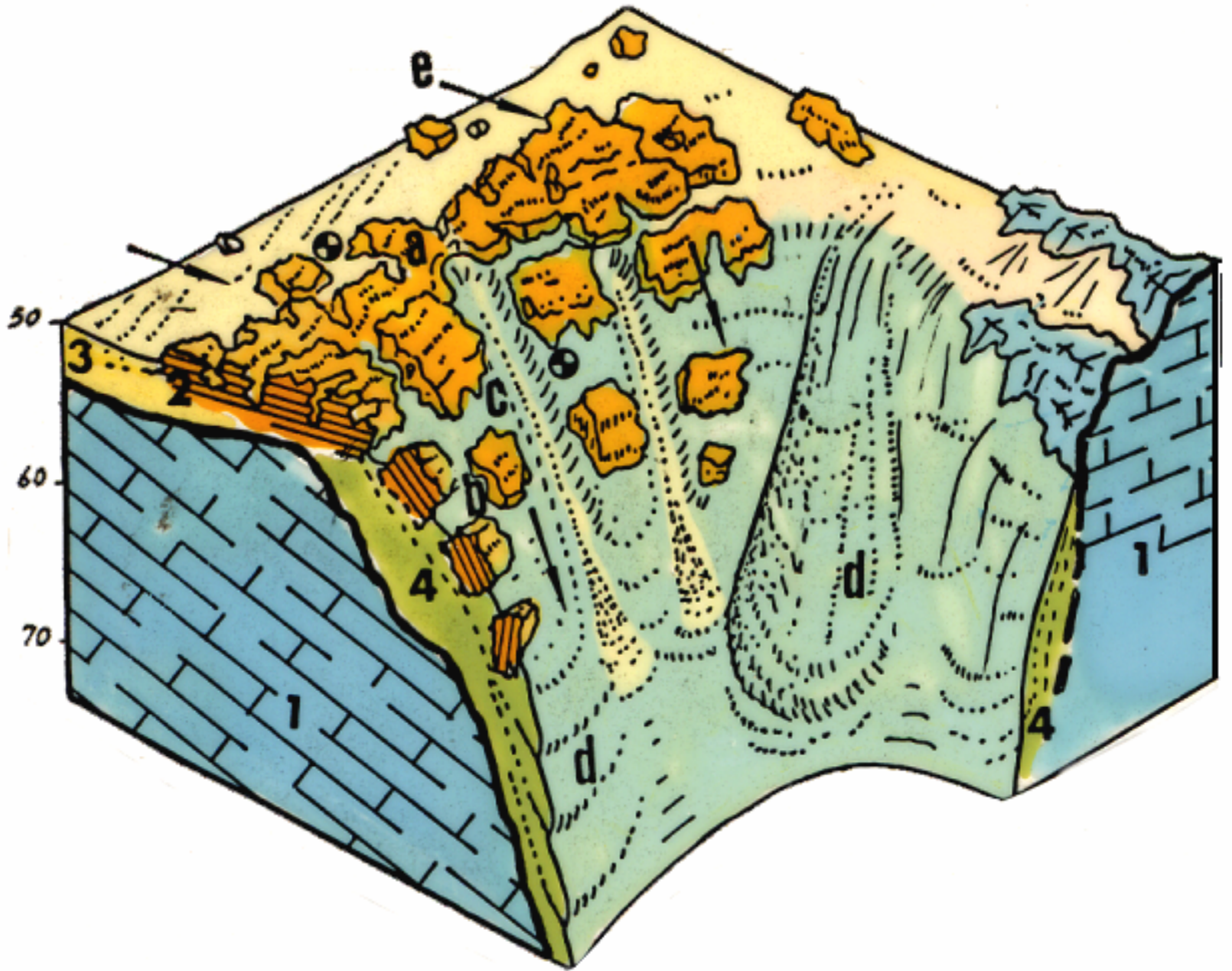
***Antonio ULZEGA  
Paolo ORRU'***



**1990**

**N/O Bannock – C.N.R.**



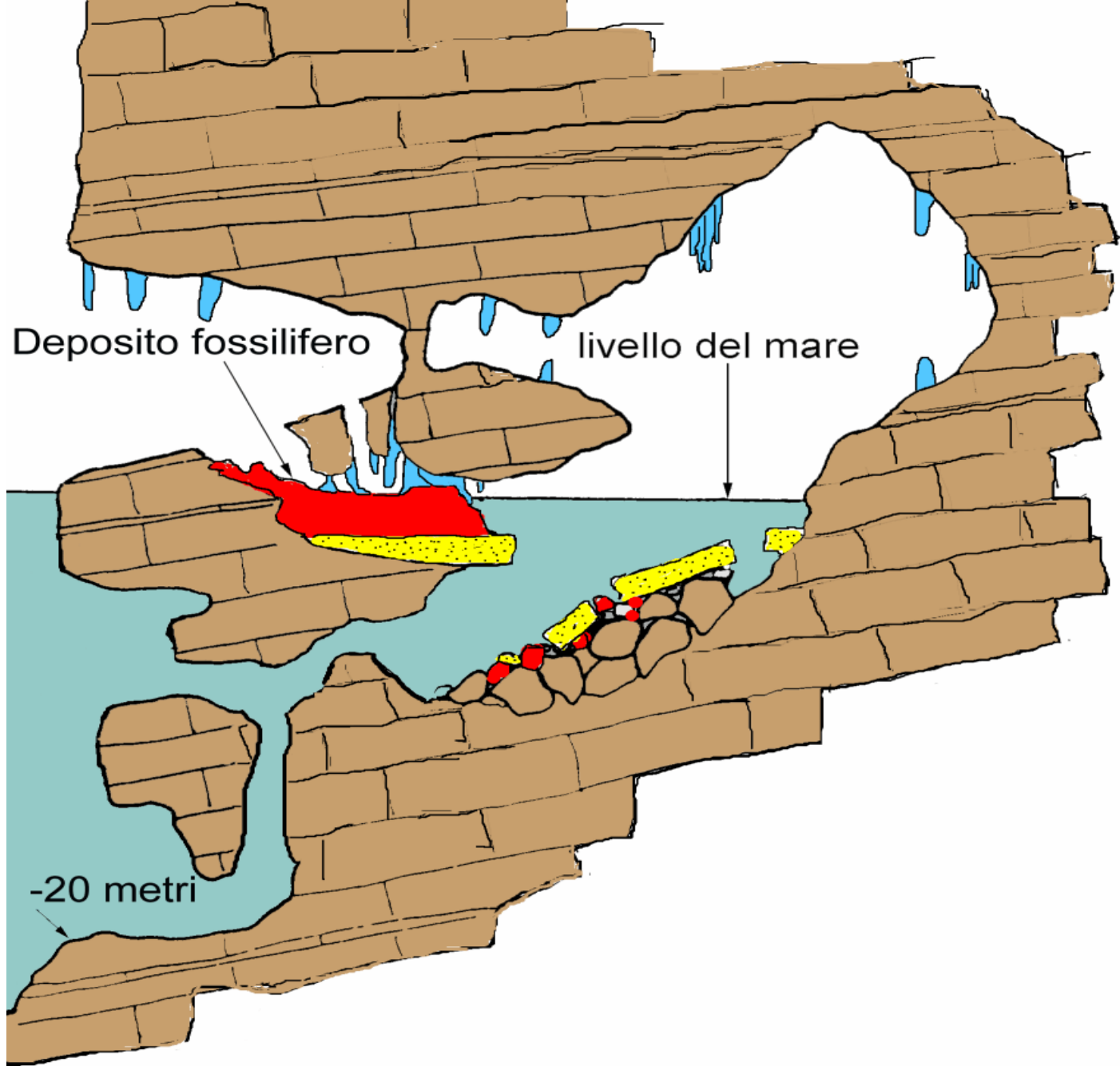


**-65 m**



















# Cartografia delle biocenosi bentoniche

## GEOHAB



## C.I.R.C.A.M.

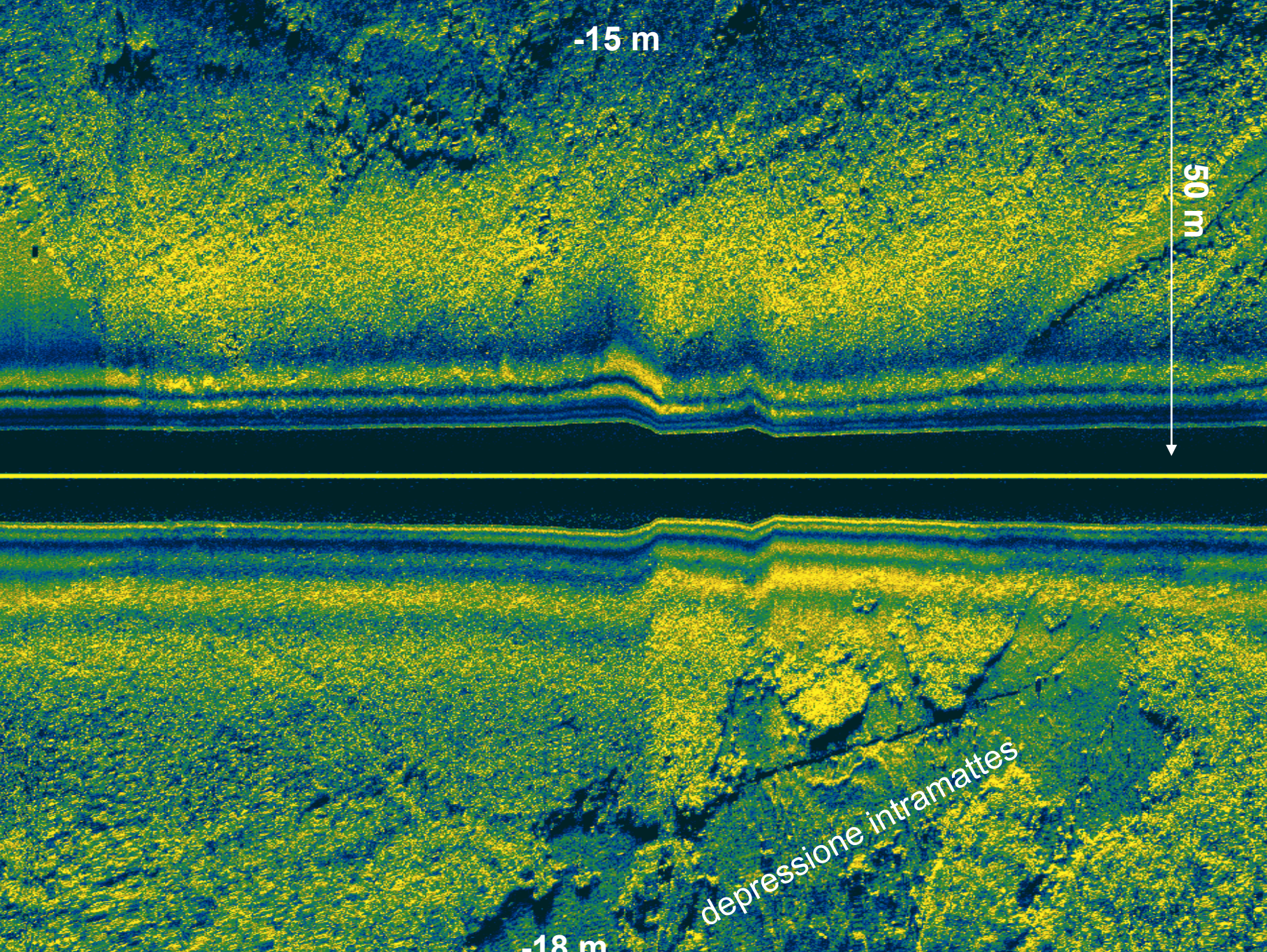
*Mappatura delle praterie di *Posidonia oceanica* lungo le coste della Sardegna e delle piccole Isole circostanti*

*rilevi Side Scan Sonar in acquisizione digitale di immagine georiferita in ambiente ISIS (U.O. DISTER);  
elaborazione di un Fotomosaico in formato ACAD e la costruzione di un G.I.S. per la gestione  
dei dati cartografici ed analitici (ARCINFO). (U.O. - Dipartimento Biologia Animale ed Ecologia).*





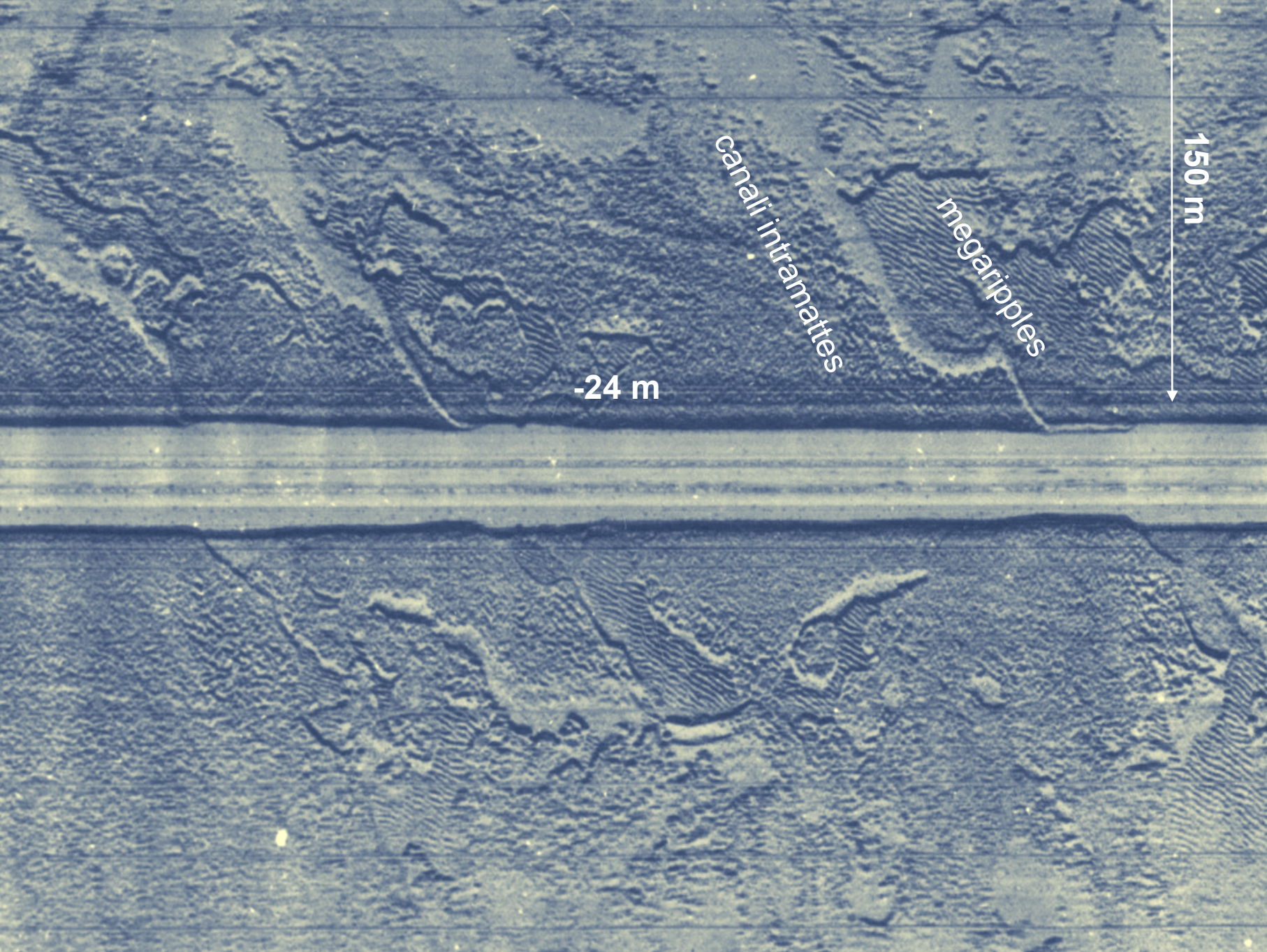












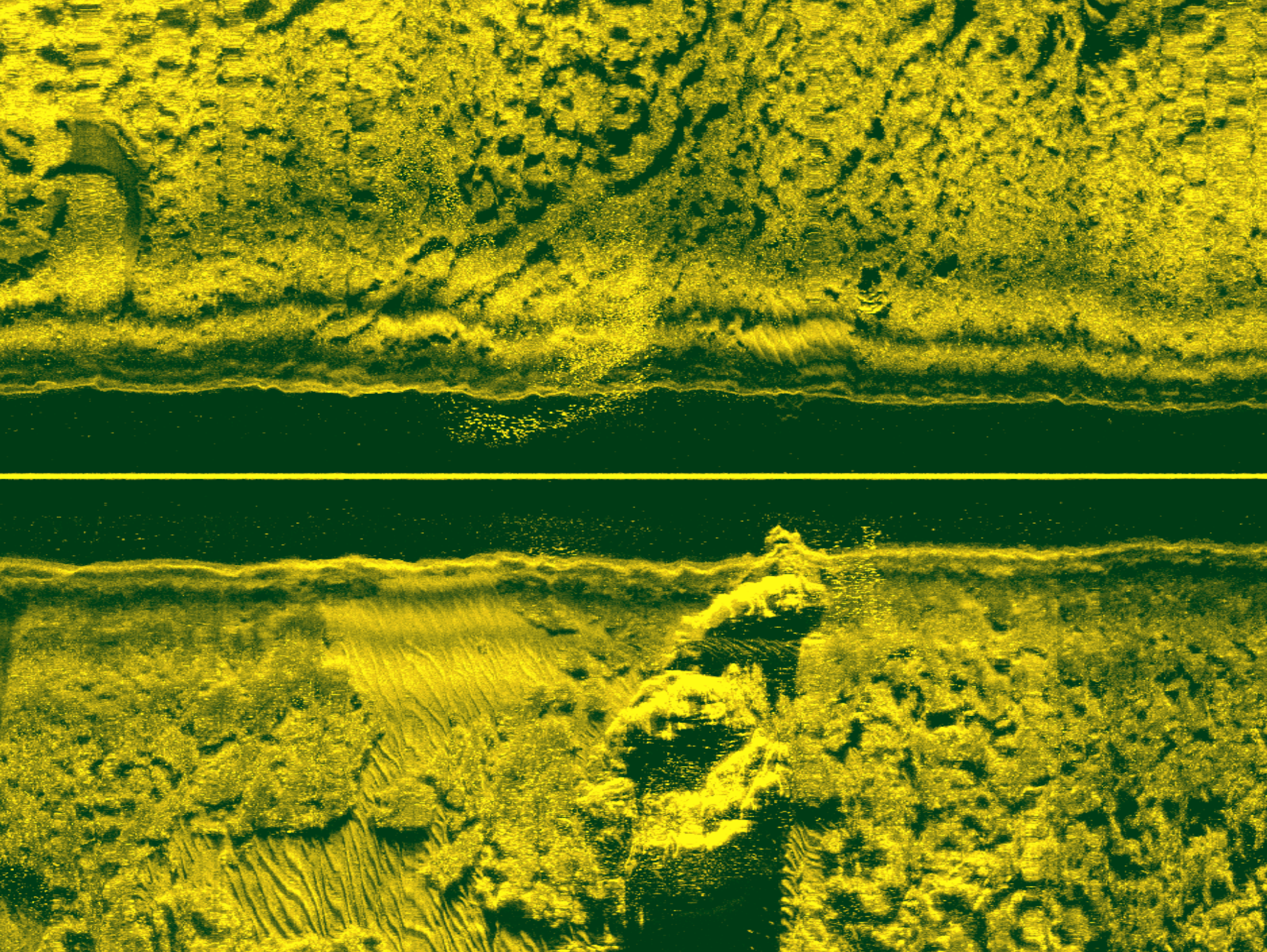
canali intramattes

megaripples

150 m

-24 m





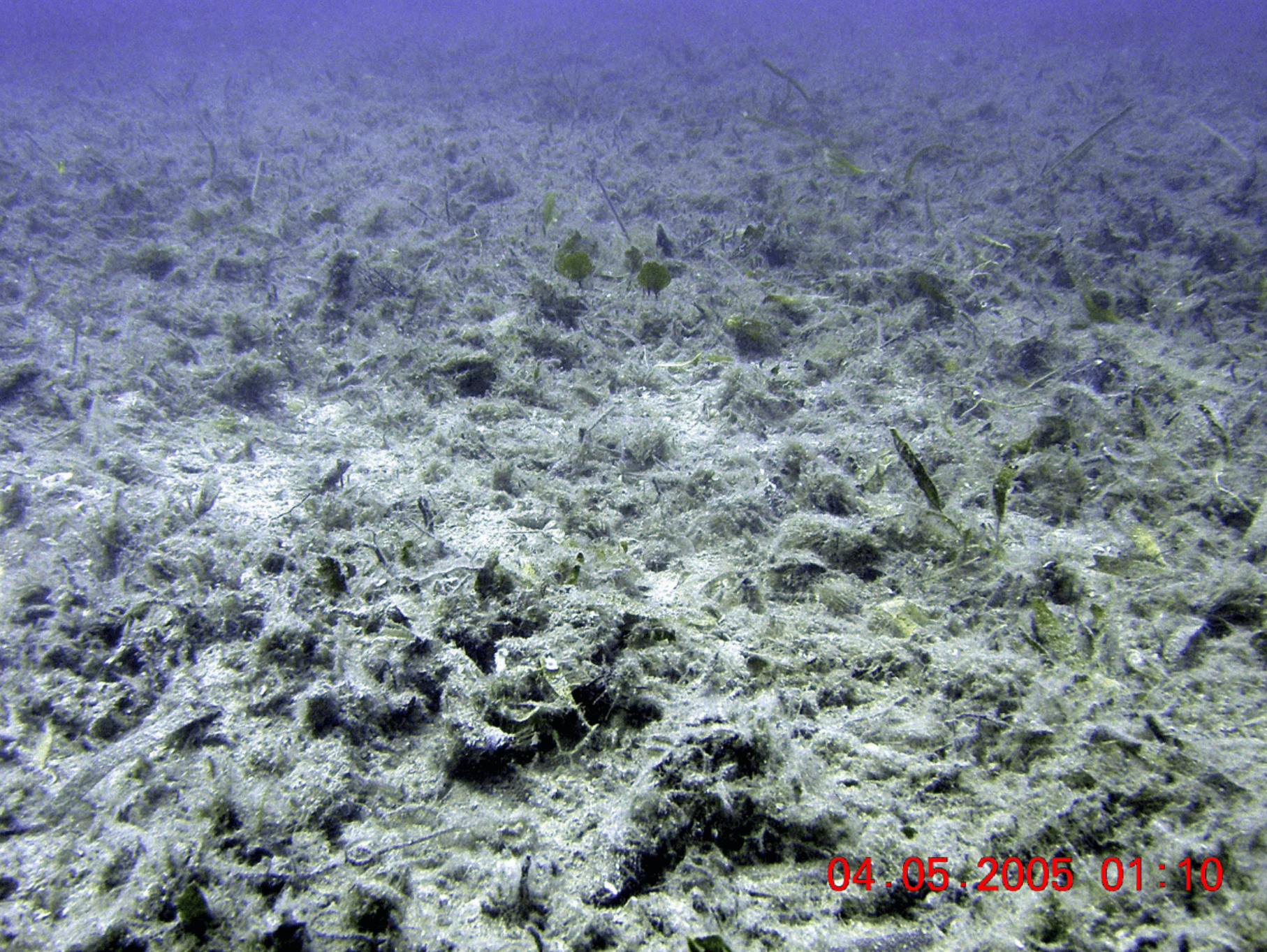






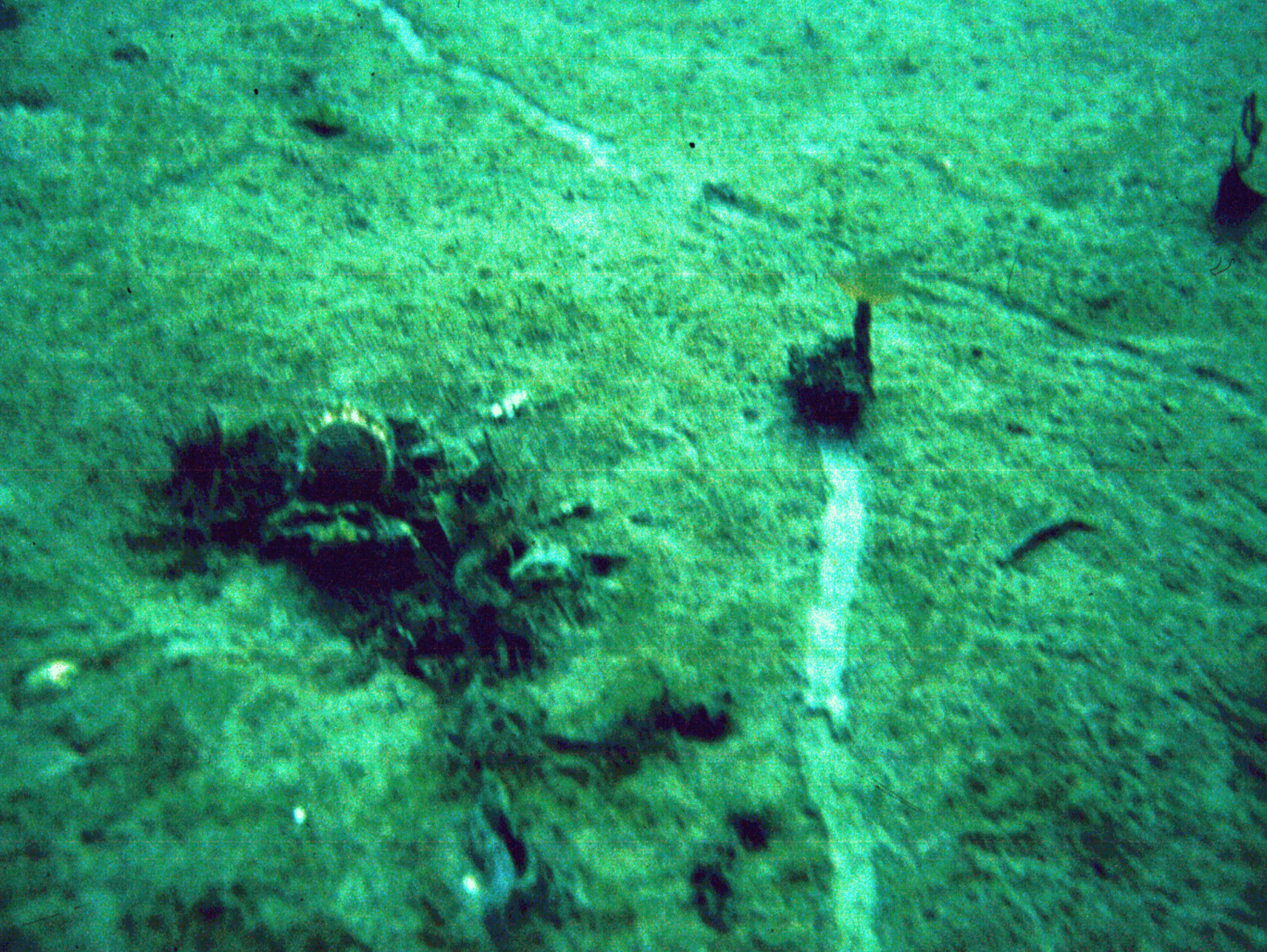




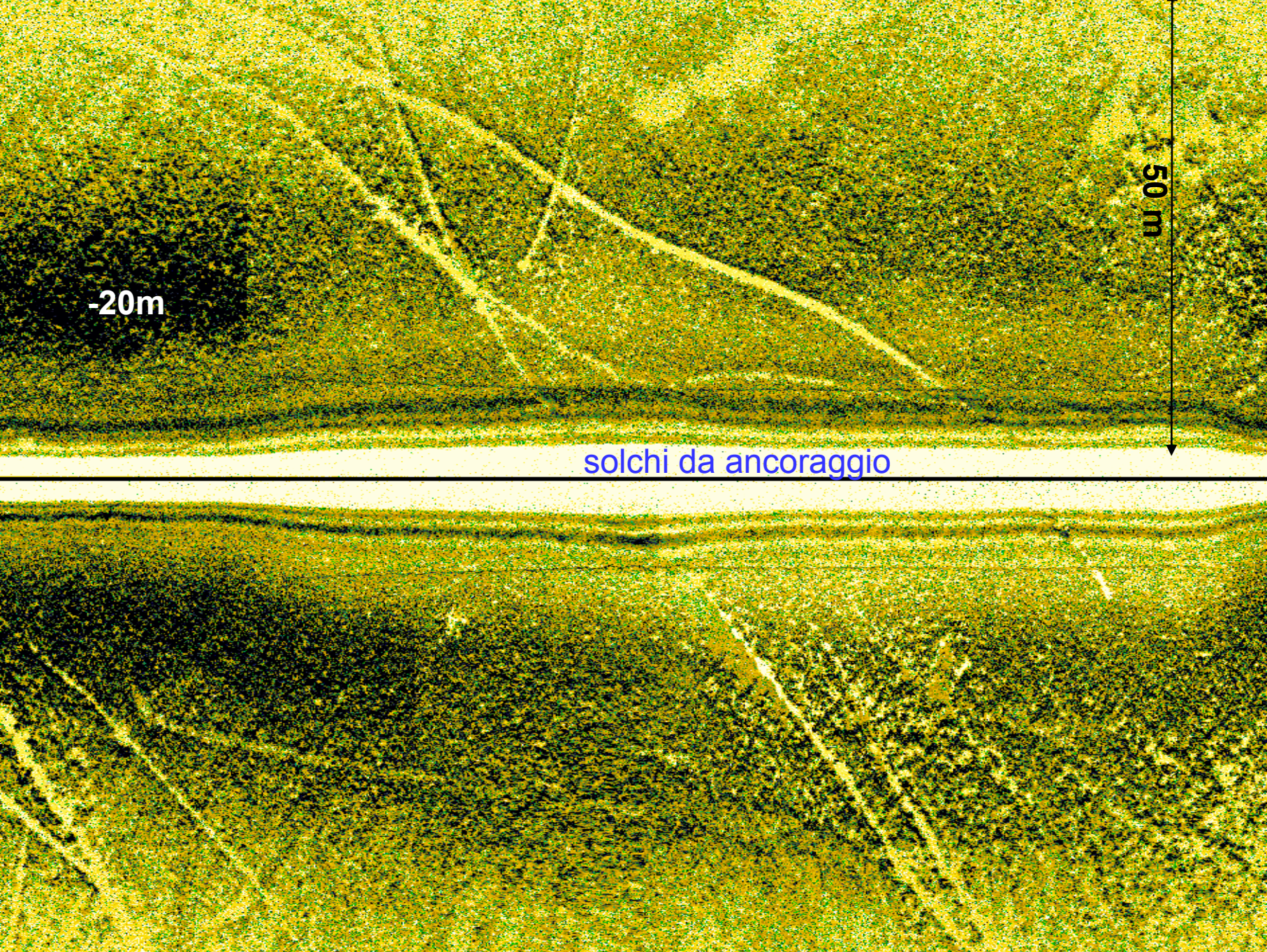


04.05.2005 01:10









-20m

50 m

solchi da ancoraggio



N

ymodocea  
nodosa

- 25

sabbie  
bioclastiche

- 17

- 32

positi  
gliari

limite superiore

100 m

limite

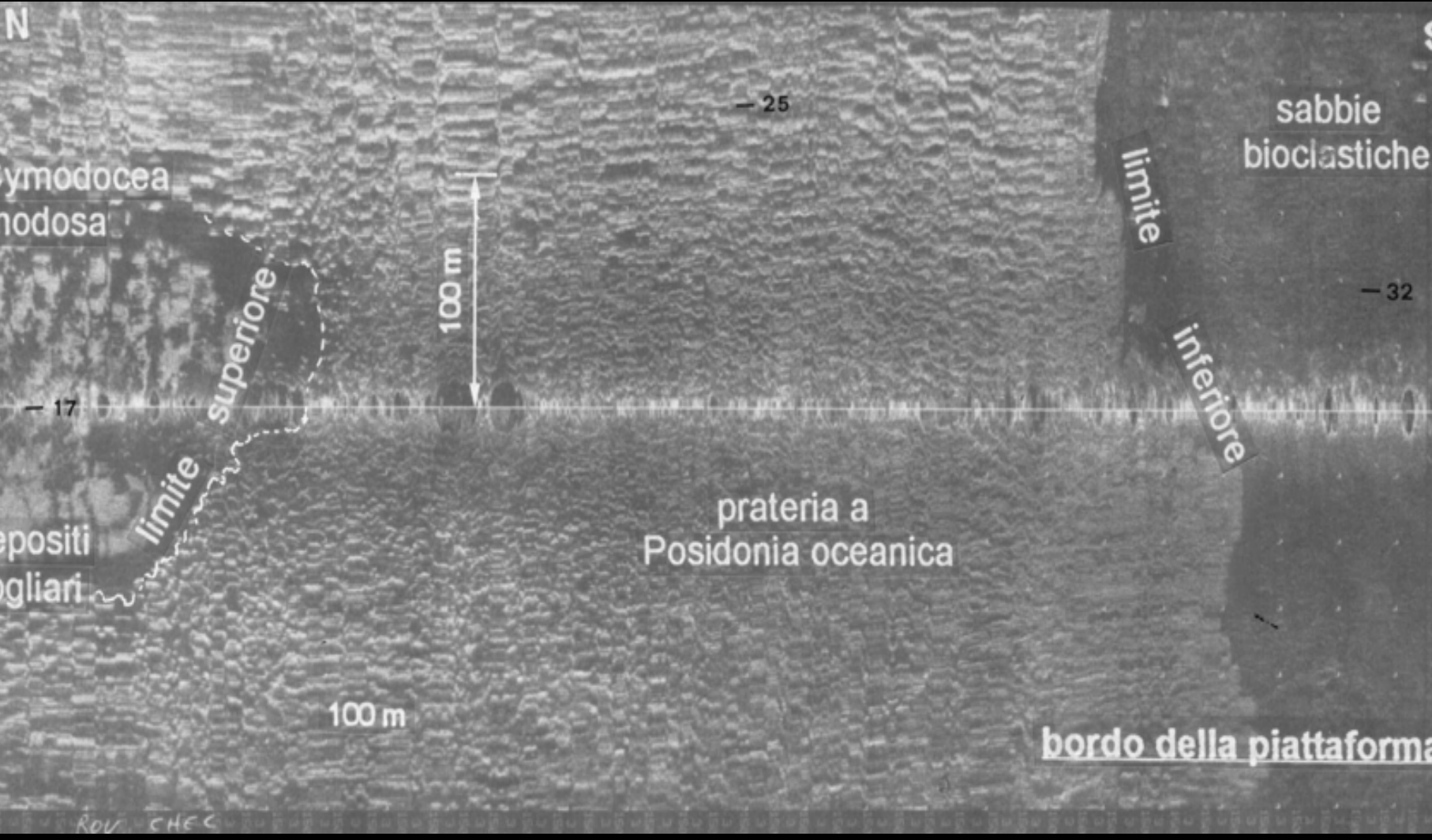
inferiore

prateria a  
Posidonia oceanica

100 m

bordo della piattaforma

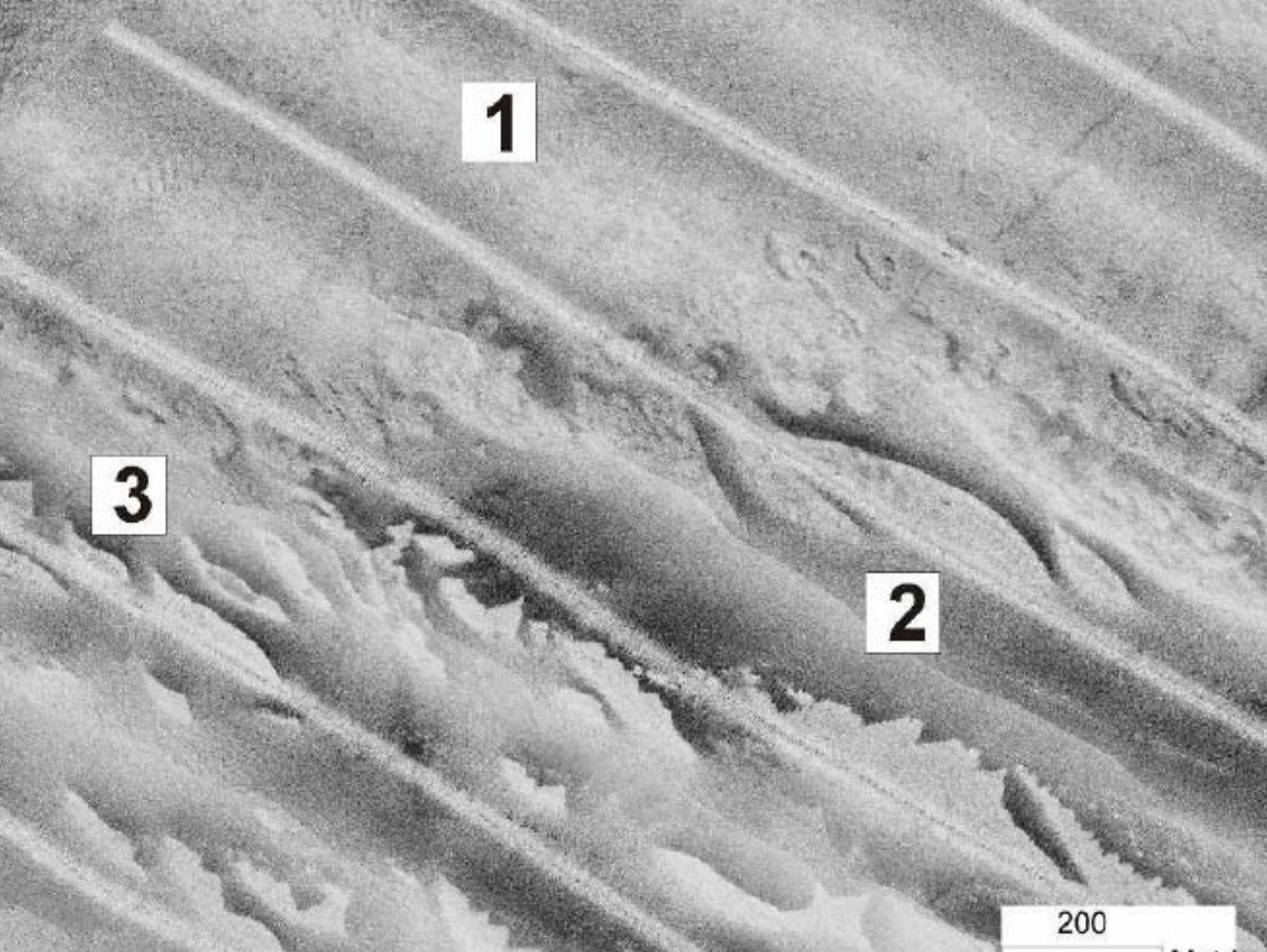
ROV CHEC











**1**

**3**

**2**

200



