

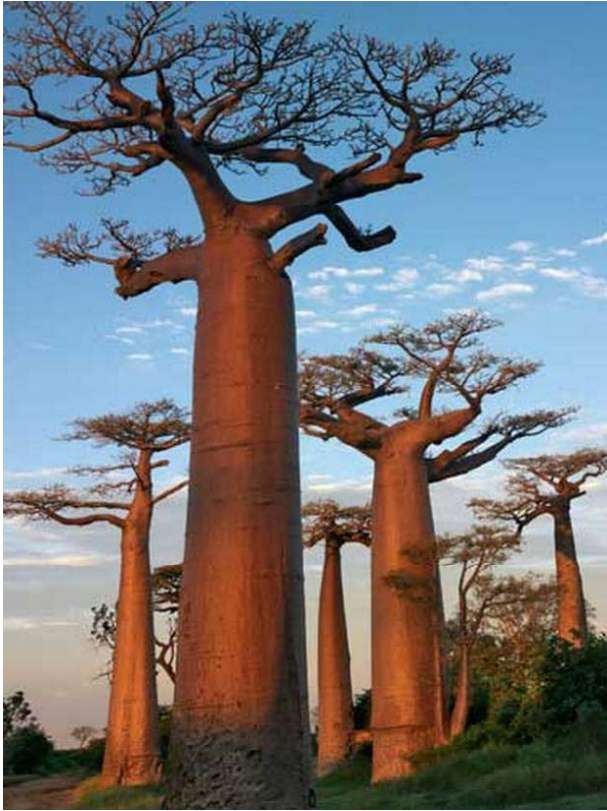


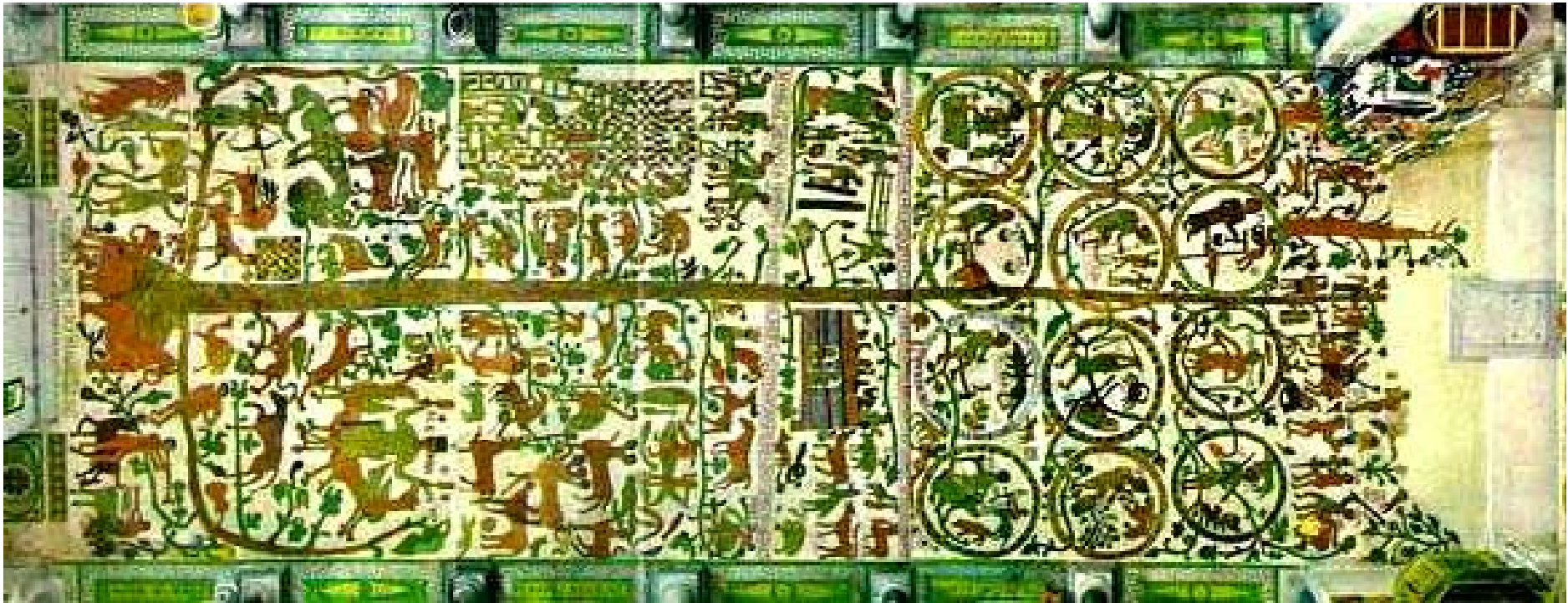
Giornata Nazionale degli Alberi 2014
21 novembre 2014
Roma

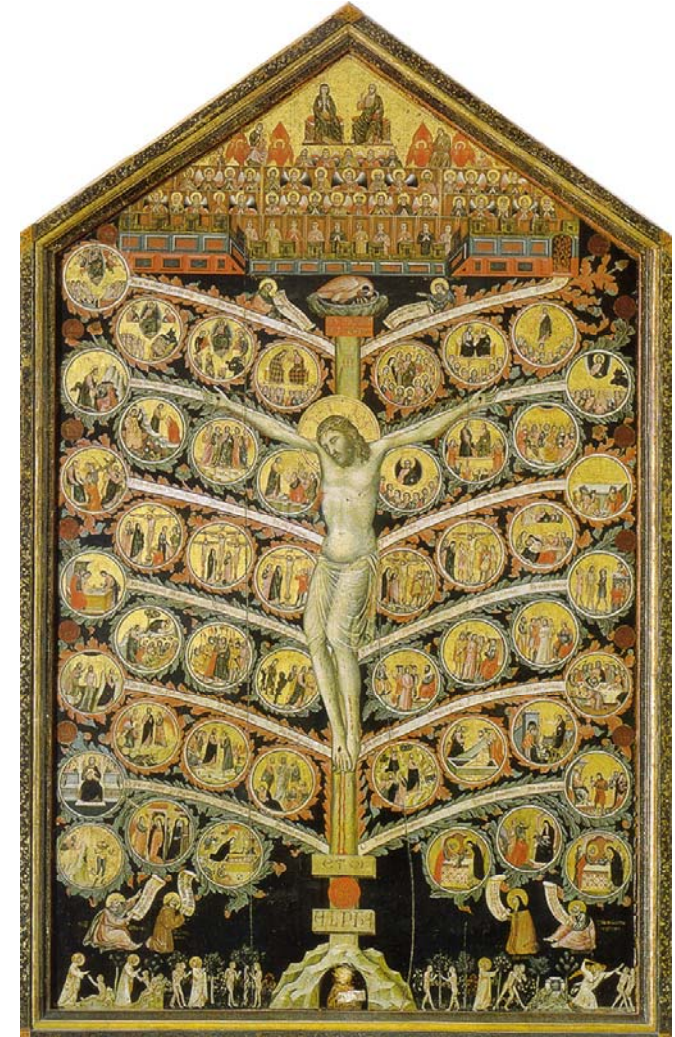
Il valore multiforme dell'albero

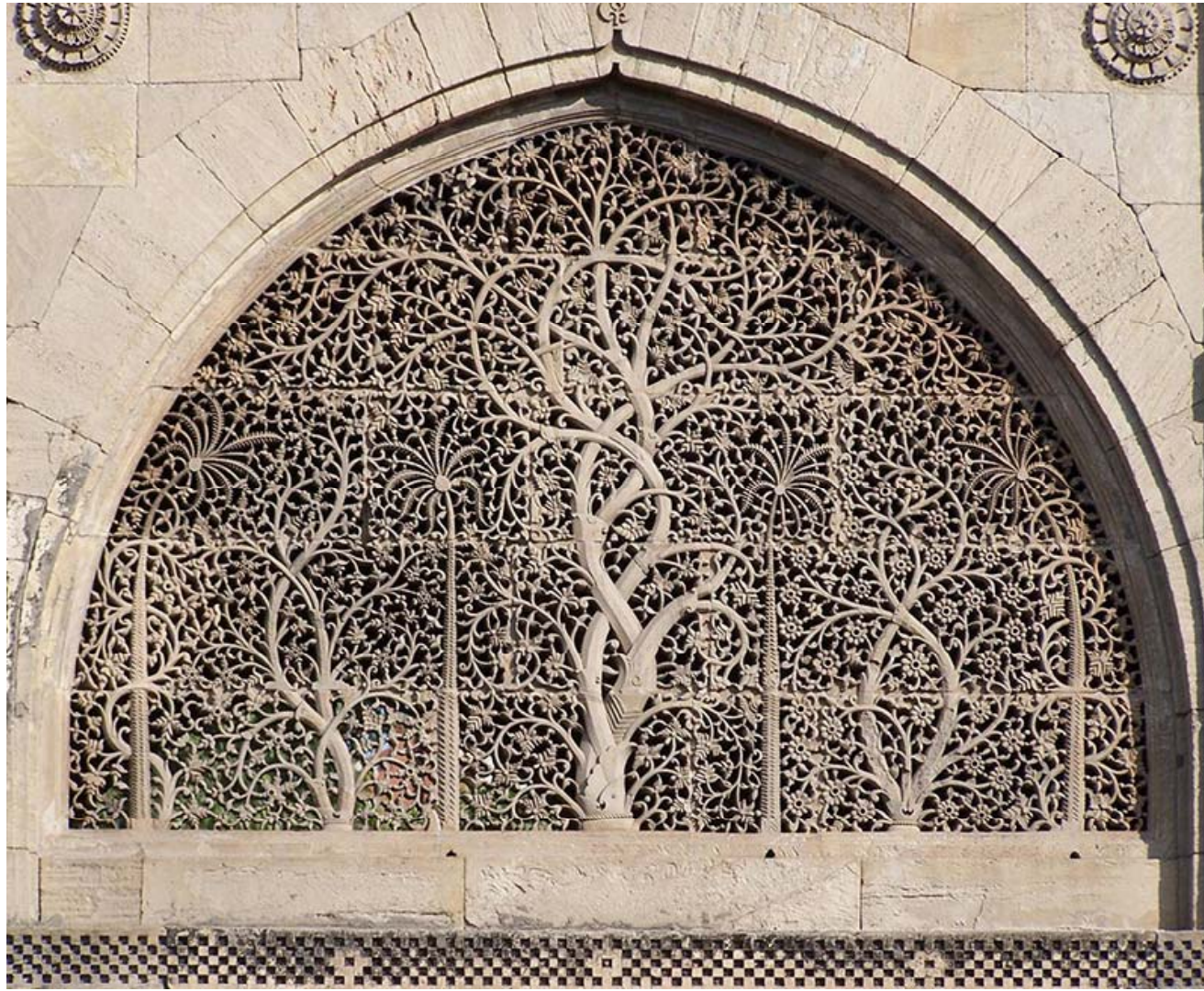
Stefano Laporta
Direttore Generale
ISPRA

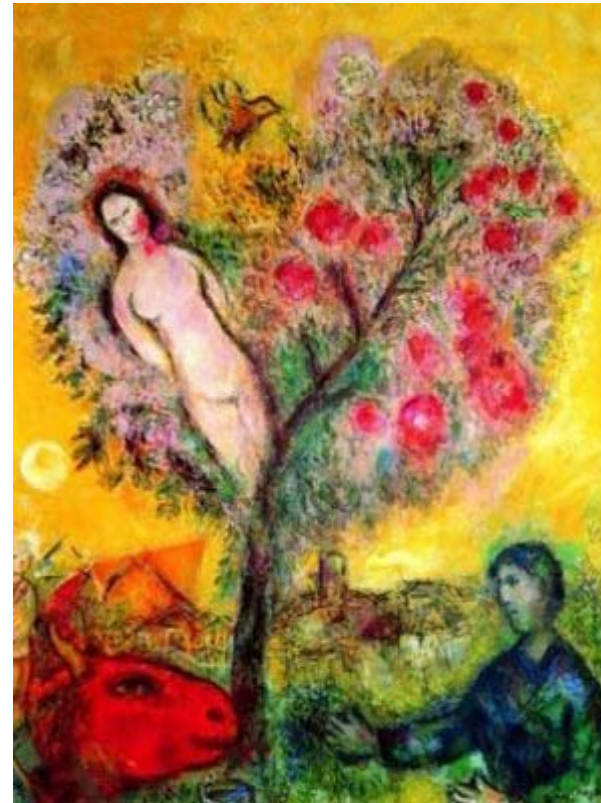


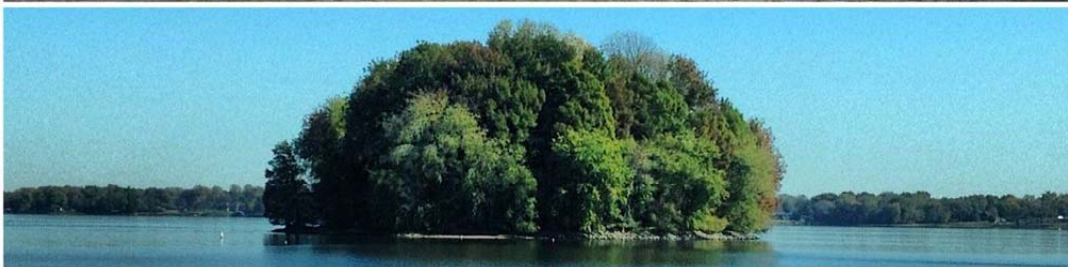




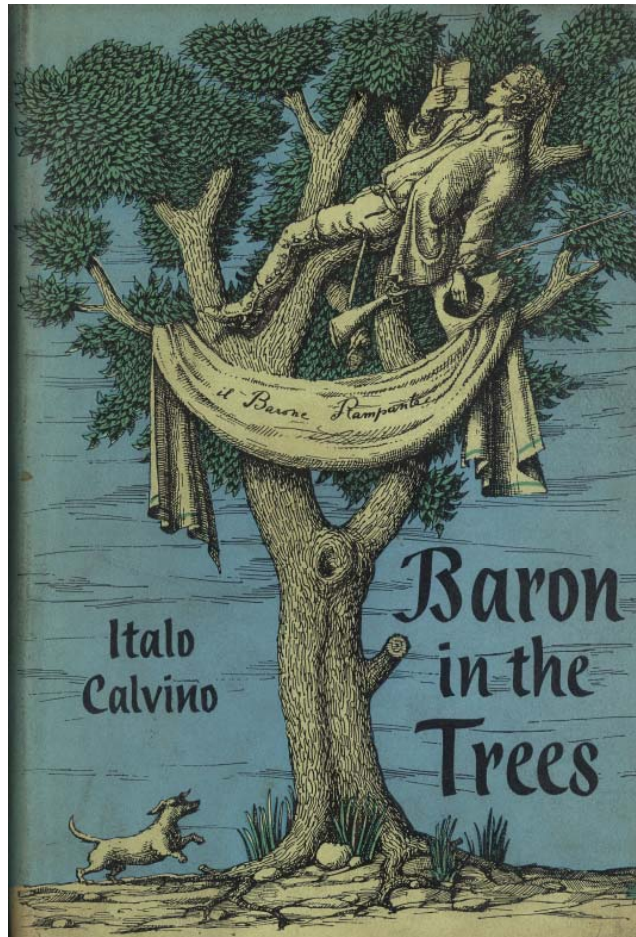






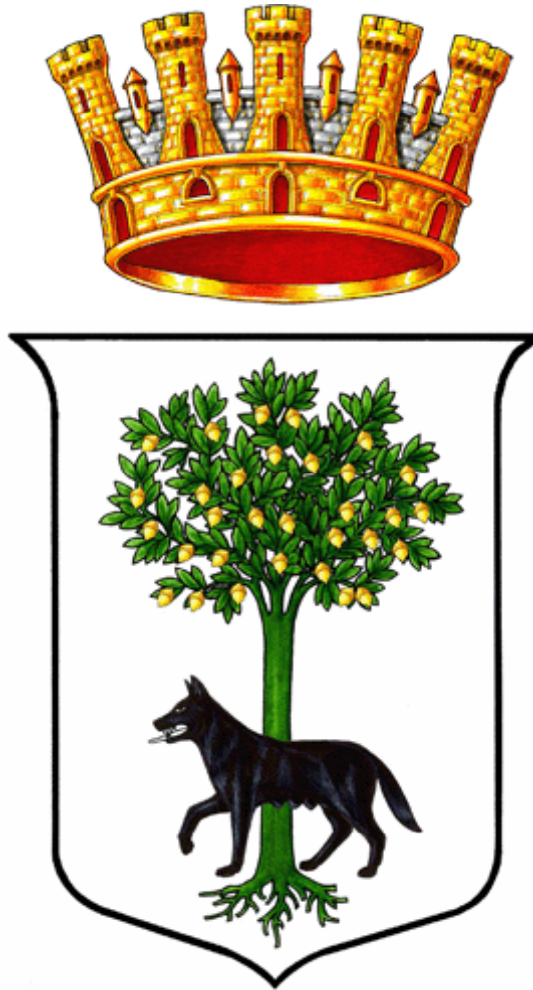








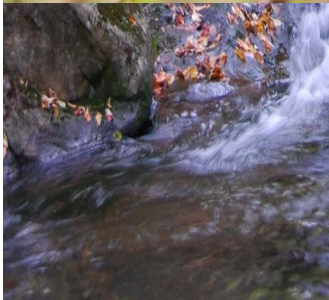
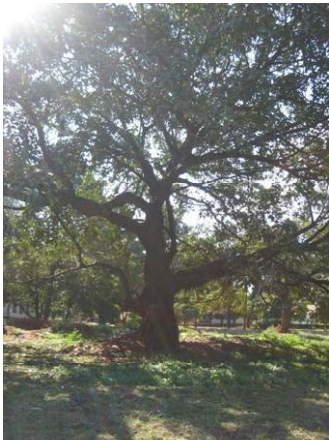






La *Convention on Biological Diversity* definisce la biodiversità come la varietà e variabilità degli organismi viventi, compresi gli ecosistemi terrestri, marini ed altri ecosistemi acquatici, ed i complessi ecologici di cui fanno parte; ciò include la diversità all'interno delle specie, tra le specie e degli ecosistemi.





Il Millennium Ecosystem Assessment ha ripartito i servizi ecosistemici in quattro categorie:

- **Provisioning services**, or the supply of goods of direct benefit to people, and often with a clear monetary value, such as timber from forests, medicinal plants, and fish from the oceans, rivers and lakes.
- **Regulating services**, the range of functions carried out by ecosystems which are often of great value but generally not given a monetary value in conventional markets. They include regulation of climate through the storing of carbon and control of local rainfall, the removal of pollutants by filtering the air and water, and protection from disasters such as landslides and coastal storms.
- **Cultural services**, not providing direct material benefits, but contributing to wider needs and desires of society, and therefore to people's willingness to pay for conservation. They include the spiritual value attached to particular ecosystems such as sacred groves, and the aesthetic beauty of landscapes or coastal formations that attract tourists
- **Supporting services**, not of direct benefit to people but essential to the functioning of ecosystems and therefore indirectly responsible for all other services. Examples are the formation of soils and the processes of plant growth..

Le funzioni degli alberi

- Moderare eventi estremi e i loro impatti
- Assorbire anidride carbonica e immagazzinare carbonio per lunghi periodi
- Mitigare gli impatti dei cambiamenti climatici
- Proteggere i corsi idrici e le coste dall'erosione
- Regolare le popolazioni di organismi patogeni
- Produrre sostanze di base per l'industria farmaceutica, biochimica e industriale
- Fornire energia rinnovabile in sostituzione di fonte fossili, disponibile localmente
- Decomporre rifiuti e decontaminare suoli e acque inquinate
- Generare, conservare e mantenere la fertilità dei suoli e il ciclo dei nutrienti
- Produce cibo
- Produce legno e fibre
- Liberare ossigeno, purificare l'aria e l'acqua
- Generare ispirazione culturale, intellettuale, artistica, spirituale, ..
- Offrire ricreazione, riparo

















Monumental trees

You aren't signed in · [sign in](#) · [register](#)

Google Custom Search

- [Main page](#)
- [Species](#)
- [Countries](#)
- [Photos](#)
- [Community](#)
- [More](#)

-
-
-



Already a member?

Username:

Password:

Become a member

[Did you forget your password?](#)

What is this site about?

Trees around us can be remarkable because of a number of reasons: some can be very large, others are old or simply very beautiful.

On this site thousands of [photos](#), [measurements](#), and [location details](#) of often unknown [monumental trees](#) can be found, mostly [giant sequoia](#) trees.

Also you can [upload your own photos](#) or [add new trees](#). Have fun!

Number of trees in the register:

18466

Number of photos in the register:

35992

Recent activity

2014-11-20

- 12:25 [Marc Meyer](#) has uploaded a new image [Canary Island pine close to the iglesia y del ayuntamiento, San Bartolomé de Tirajana - Casco, Spain.](#)



- 12:17 [Marc Meyer](#) has added a height measurement of a 20.20 m [Canary Island pine close to the iglesia y del ayuntamiento, San Bartolomé de Tirajana - Casco, Spain.](#)
- 12:17 [Marc Meyer](#) has added a girth measurement of a 4.75 m [Canary Island pine close to the iglesia y del ayuntamiento, San Bartolomé de Tirajana - Casco, Spain.](#)
- 12:15 [Marc Meyer](#) has registered a new [Canary Island pine close to the iglesia y del ayuntamiento, San Bartolomé de Tirajana - Casco, Spain.](#)

130%







Italia

1,0 Milioni di ettari per interventi di restauro forestale su grande scala

8,5 Milioni di ettari per interventi di restauro forestale su piccola scala, a mosaico





United Nations Environment Programme
environment for development

- Climate Change
- Disasters & Conflicts
- Ecosystem Management
- Environmental Governance
- Harmful Substances
- Resource Efficiency



The Billion Tree Campaign

Growing Green

HOME | ABOUT | PARTNERS | NEWS | GET INVOLVED | WHERE WE ARE | INFORMATION MATERIALS | CONTACT US |



News from the Campaign

Verizon Wireless plants a tree for every customer who switches to paperless

[READ MORE](#)



**“Qual è il periodo migliore
per piantare un albero?”**

“Venti anni fa”

**Qual è il secondo periodo
migliore per piantare un
albero?”**

“Adesso!”