



"IL MONITORAGGIO DEL LUPO NEL PARCO NAZIONALE DELLA MAJELLA, INDICAZIONI PER LA CONSERVAZIONE E LA GESTIONE DEI CONFLITTI"

Roma, 3 e 4 dicembre 2018



VERSO UN PIANO NAZIONALE
DI MONITORAGGIO DEL LUPO

ATTIVITÀ ENTE PNM (1998-2003)



74.000 ETTARI

39 COMUNI, 3 PROVINCE

40 % SUPERFICIE FORESTALE

20 CIME OLTRE I 2000 METRI

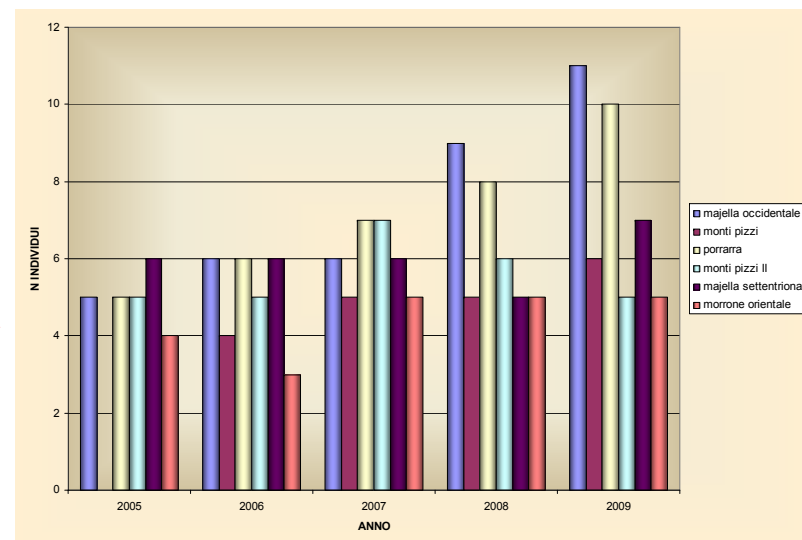
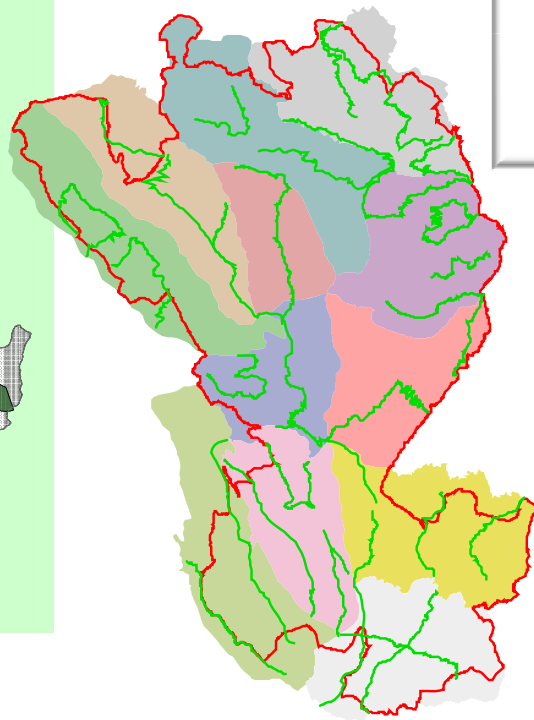
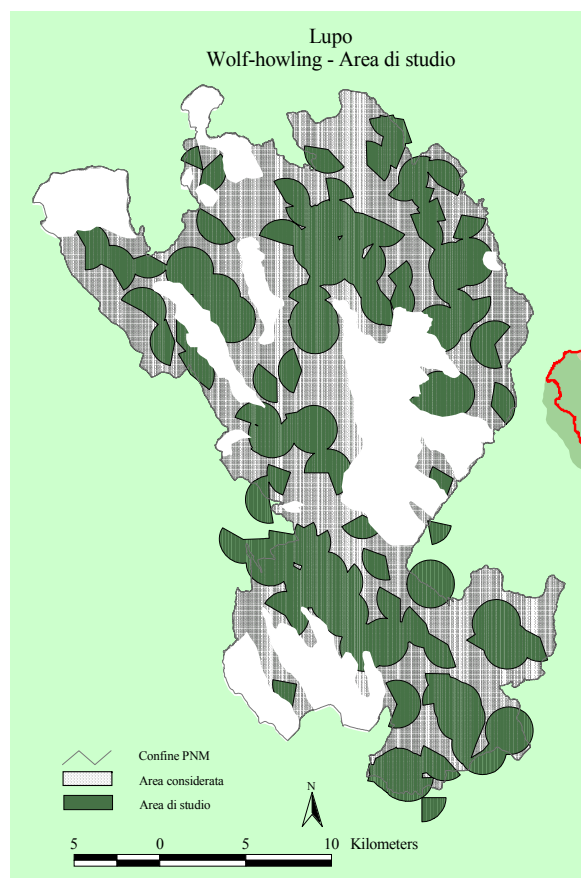
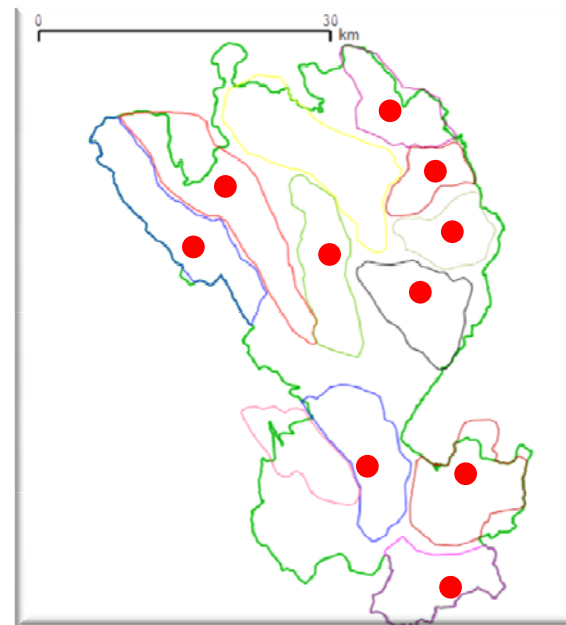
Roma, 3 e 4 dicembre 2018



PIANO NAZIONALE
TORAGGIO DEL LUPO



LIFE COEX (2004-2008) "Improving Coexistence of Large Carnivores and Agriculture in Europe"

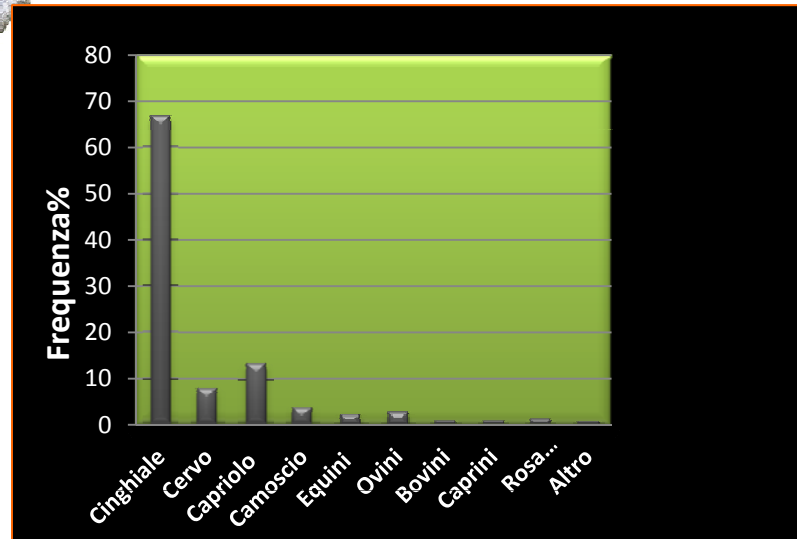


Roma, 3 e 4 dicembre 2018



Novembre 2007- Novembre 2008

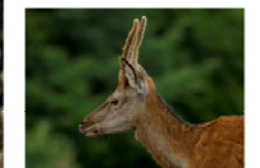
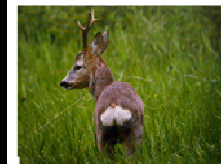
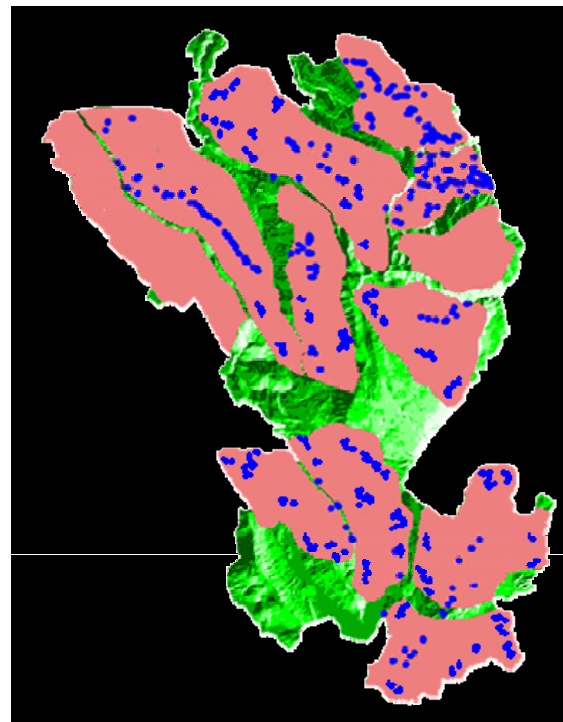
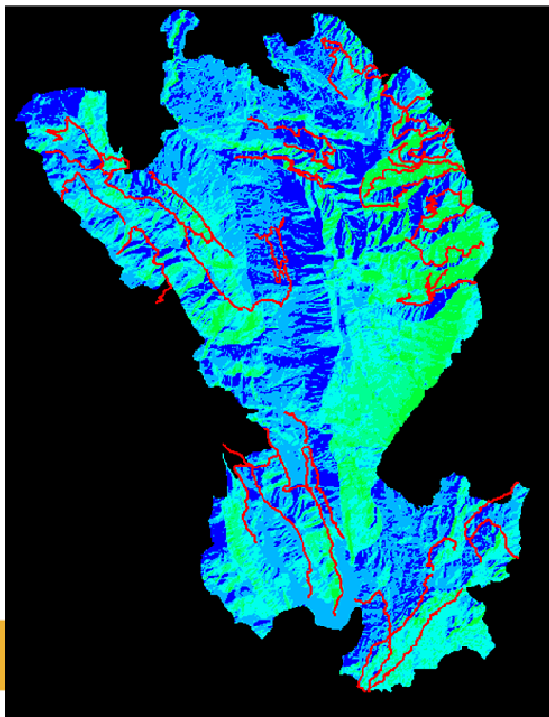
- 26 circuiti, 287 Km, percorsi 2 volte al mese
- 3100 Km percorsi a piedi



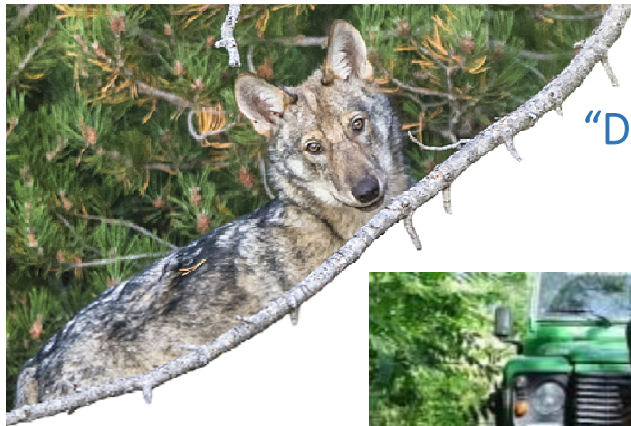
➤ 517 escrementi



- Cinghiale: 67%
- Capriolo: 13.3%
- Cervo: 7,7%
- Camoscio 4 %
- Domestici : 5,87%



VERSO UN PIANO NAZIONALE
DI MONITORAGGIO DEL LUPO



LIFE WOLFNET (2010-2013)

“Development of coordinated protection measures for Wolf in Apennines”



Roma, 3 e 4 dicembre 2018

VERSO UN PIANO NAZIONALE
DI MONITORAGGIO DEL LUPO



LIFE WOLFNET (2010-2013)

“Development of coordinated protection measures for Wolf in Apennines”



MAIELLA NATIONAL PARK
PREDATION SHEET & RESTING SITE

COORDINATE CLUSTER

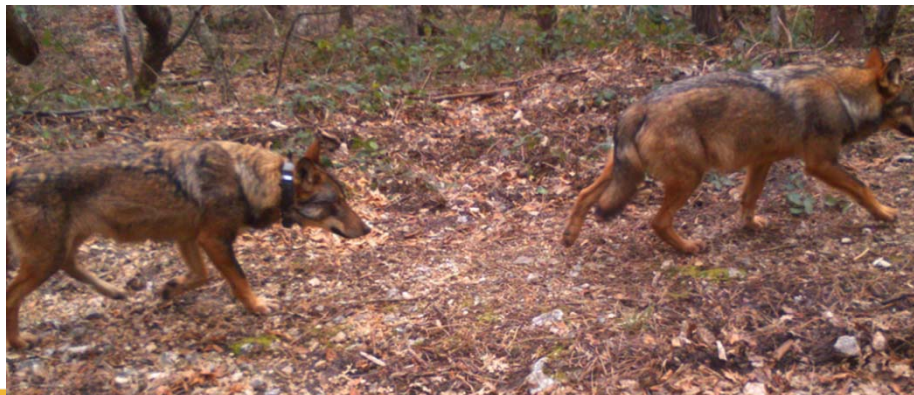
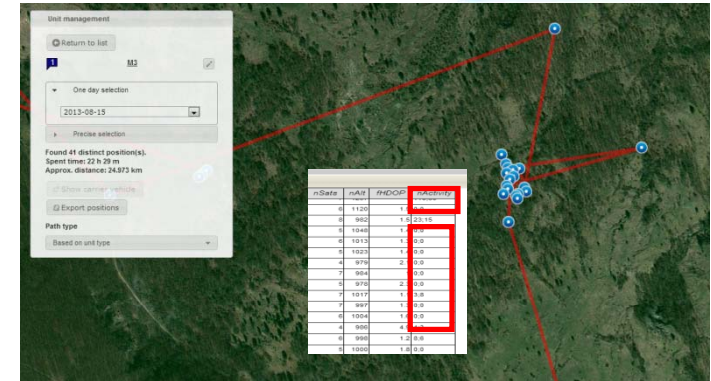
Survey Data

Resting Site

Predation Sheet

Information Carcass

Notes



Roma, 3 e 4 dicembre 2018



VERSO UN PIANO NAZIONALE
DI MONITORAGGIO DEL LUPO



LIFE WOLFNET (2010-2013)

“Development of coordinated protection measures for Wolf in Apennines”

PROTOCOLLO DI MONITORAGGIO CONDIVISO

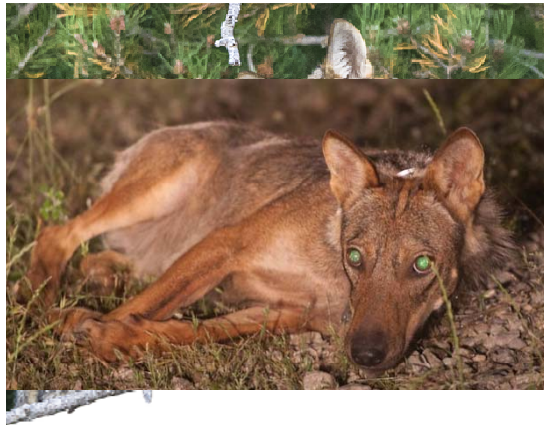


...modulabile in base :
agli obiettivi
alle dimensioni e tipologia
dell'area di studio
alla disponibilità in termini
di risorse umane e
finanziaria

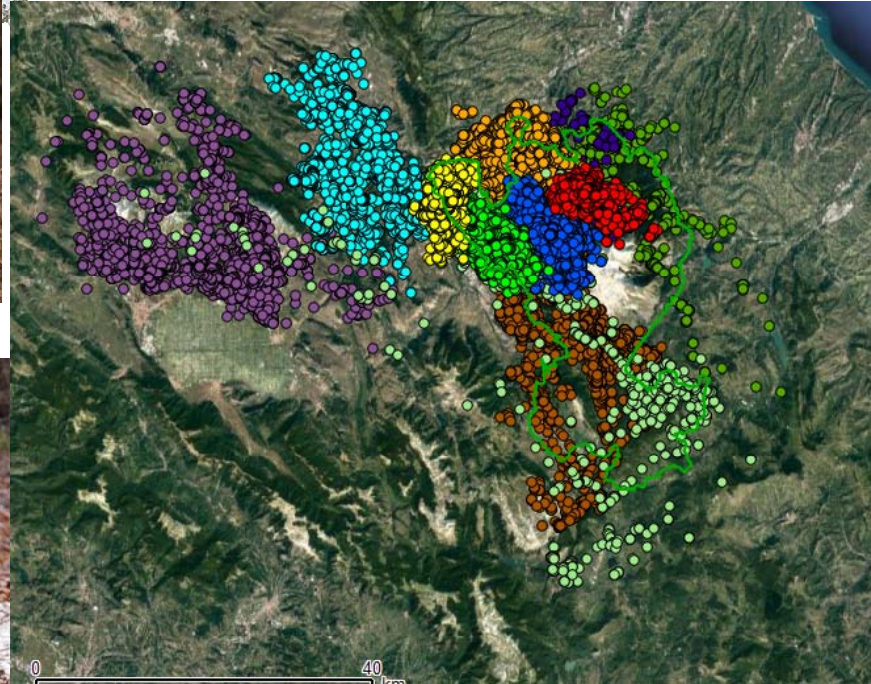


LE
DI MONITORAGGIO DEL LUPO

LIFE WOLFNET /WOLFNET 2.0 (2010-2018)



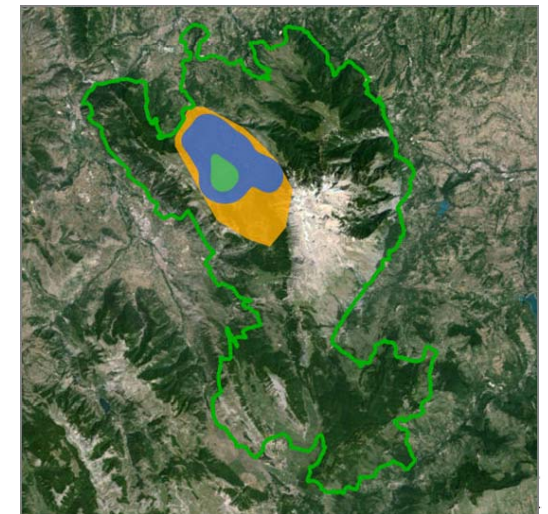
Roma, 3 e 4 dicembre 2018



19 lupi (11 F e 8 M) con collare GPS

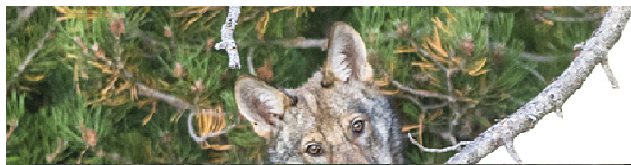
11 branchi diversi

55.000 localizzazioni GPS



DI MONITORAGGIO DEL LUPO

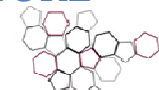
ECOLOGIA TROFICA – INTERAZIONI PREDA/PREDATORE



HR CINGHIALI



ISPRA
Istituto Superiore per la Protezione
e la Ricerca Ambientale

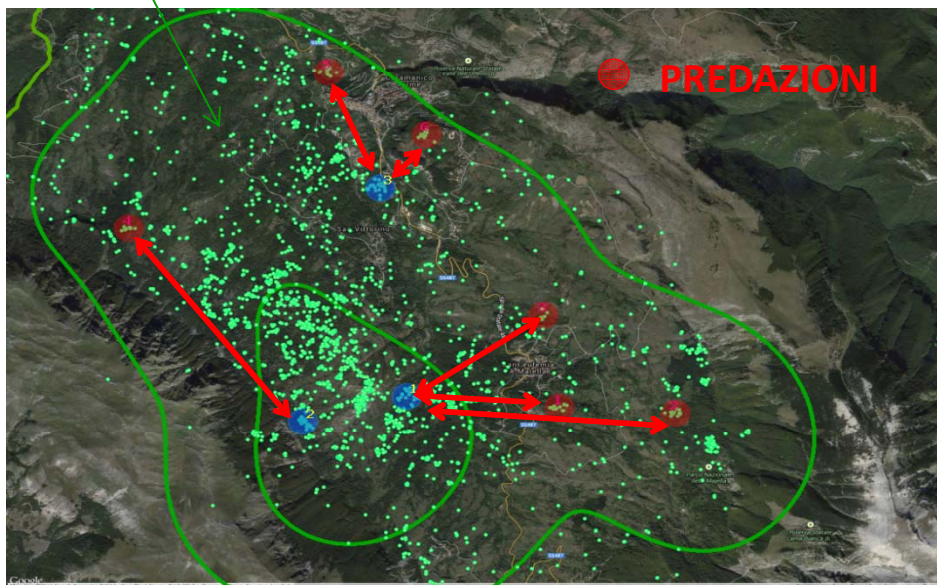
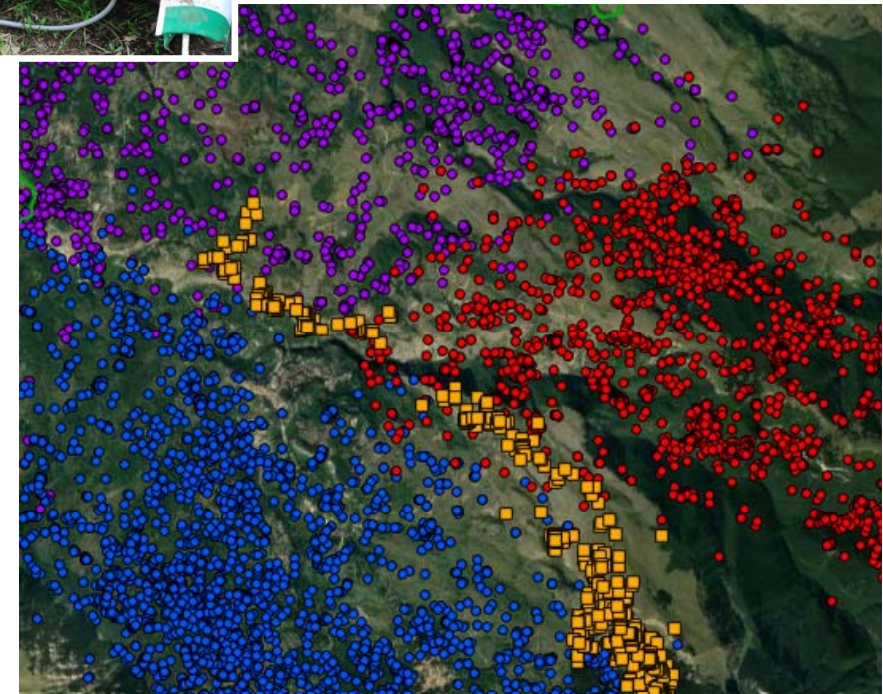


Sistema Nazionale
per la Protezione
dell'Ambiente

■ PUNTI GPS CERVI (1 BRANCO)

●●● PUNTI GPS LUPI (3 BRANCHI)

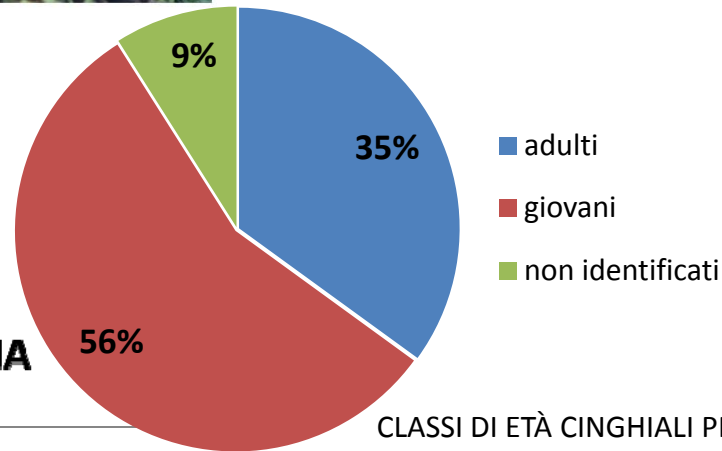
HR LUPO



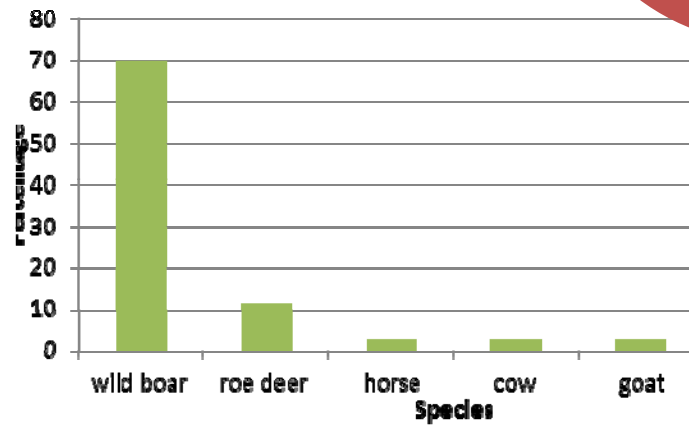
ECOLOGIA TROFICA - SURVEY SUI CLUSTER DI POSIZIONI GPS



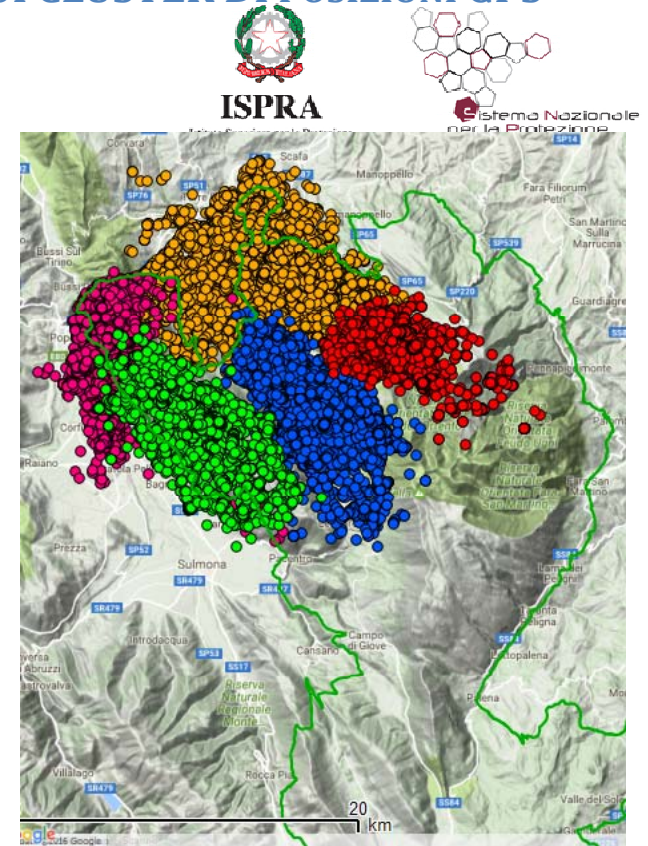
NECROFAGIA



CLASSI DI ETÀ CINGHIALI PREDATI



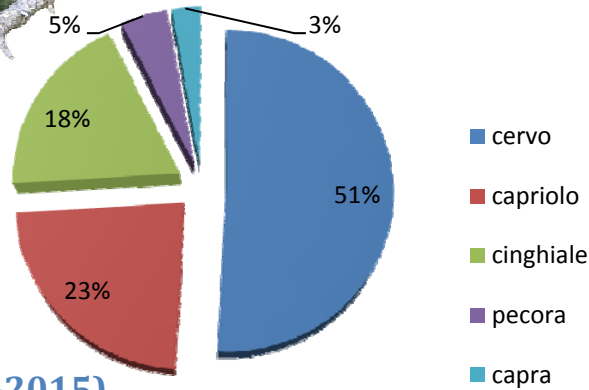
Roma, 3 e 4 dicembre 2018



ECOLOGIA TROFICA - SURVEY SUI CLUSTER DI POSIZIONI GPS



BRANCO M5
VALLE DELL'ORFENTO (2014-2015)

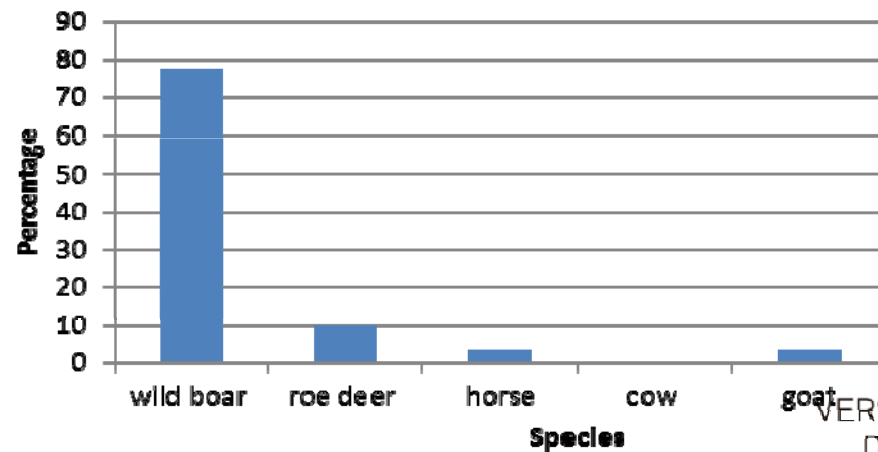


Kill rate, la % di cinghiali predati, 200 cinghiali predati in un anno...



Wolf	Monitoring period	N locations GPS	N kill sites	N kill intervals	Kill rate (hr)
M3 Pack	12 months	5577	85	37	32,6 ± 20,7

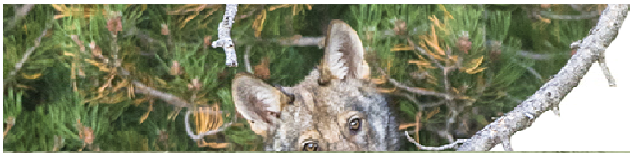
Specie predate



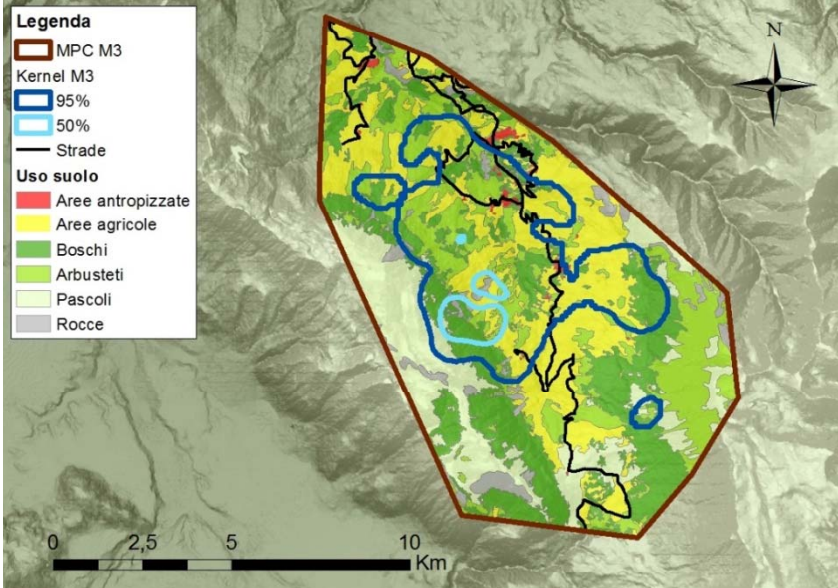
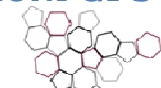
BRANCO M3
VALLE DELL'ORTA
2013-2014

Roma, 3 e 4 dicembre 2018

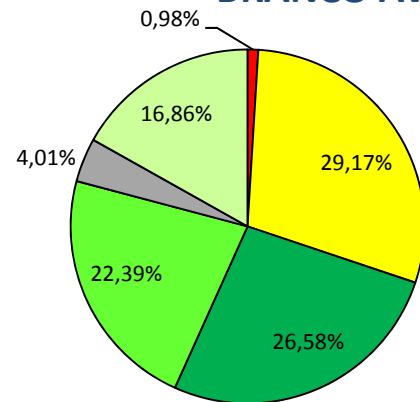
VERSO UN PIANO NAZIONALE
DI MONITORAGGIO DEL LUPO



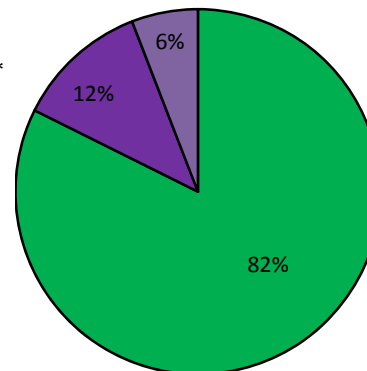
ECOLOGIA TROFICA - SURVEY SUI CLUSTER DI POSIZIONI GPS



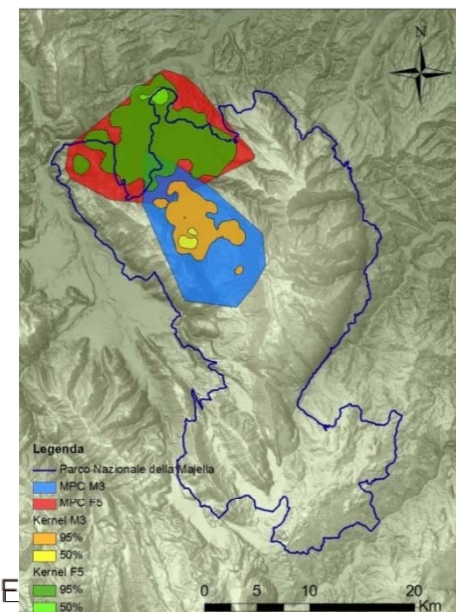
BRANCO AVO – M3



- Aree antropizzate *
- Aree agricole
- Boschi
- Arbusteti
- Rocce
- Pascoli *



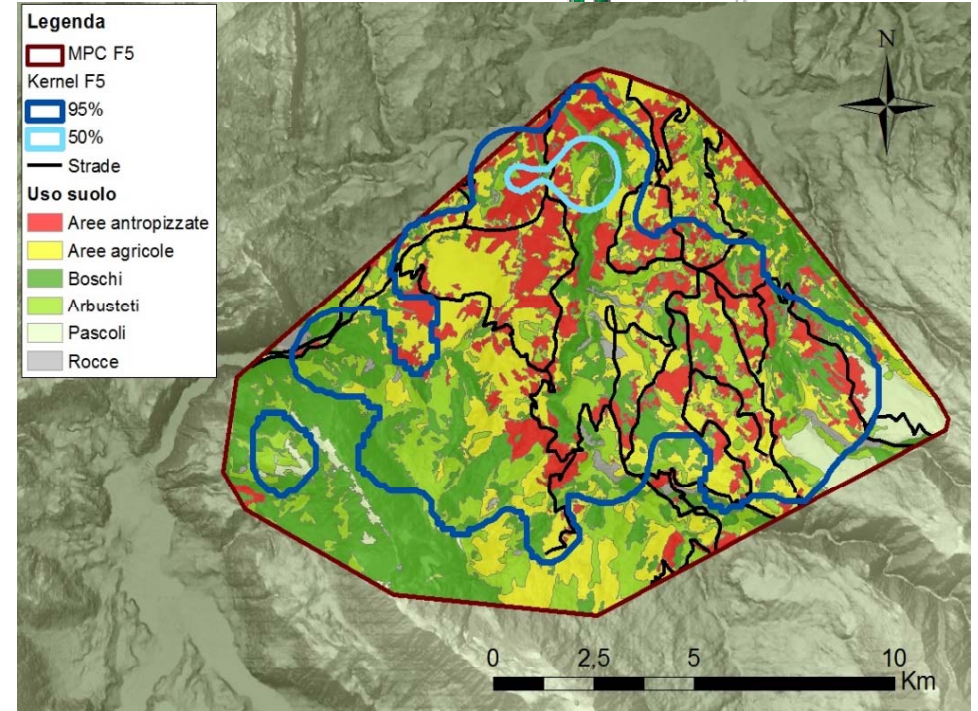
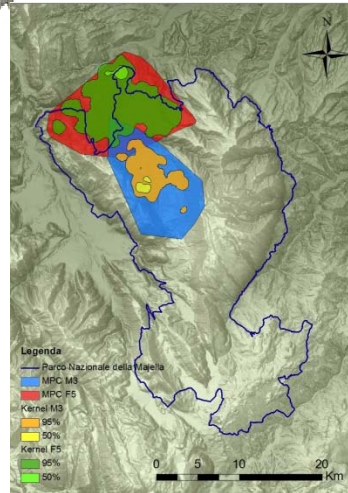
- Predazione
- Necrofagia
- Indeterminato



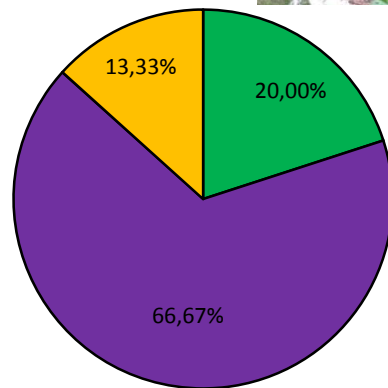
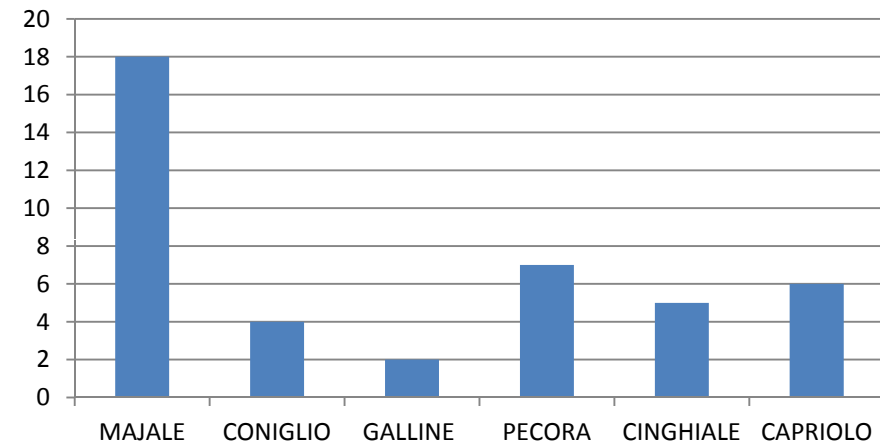
Roma, 3 e 4 dicembre 2018

VE
DI MONITORAGGIO DEL LUPO

ECOLOGIA TROFICA - SURVEY SUI CLUSTER DI POSIZIONI GPS



■ NUMERO DI CLUSTER

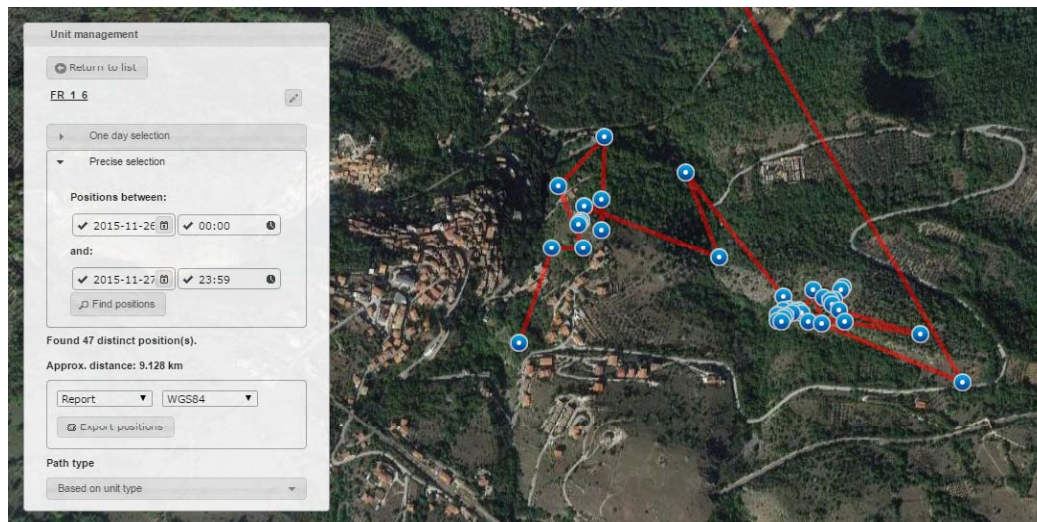


■ Predazione
■ Necrofagia
■ Indeterminato

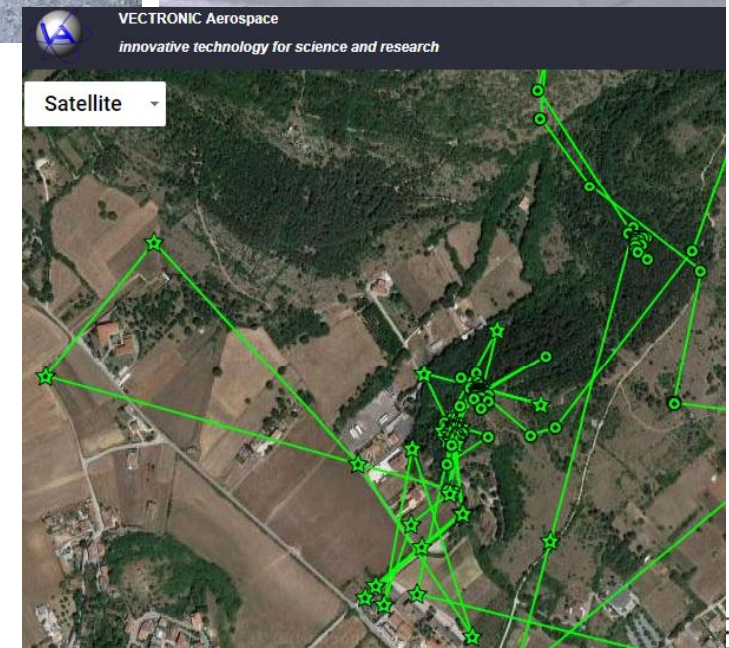
Roma, 3 e 4 dicembre 2018

VERSO UN PIANO NAZIONALE
DI MONITORAGGIO DEL LUPO

LUPI PROBLEMATICI.....

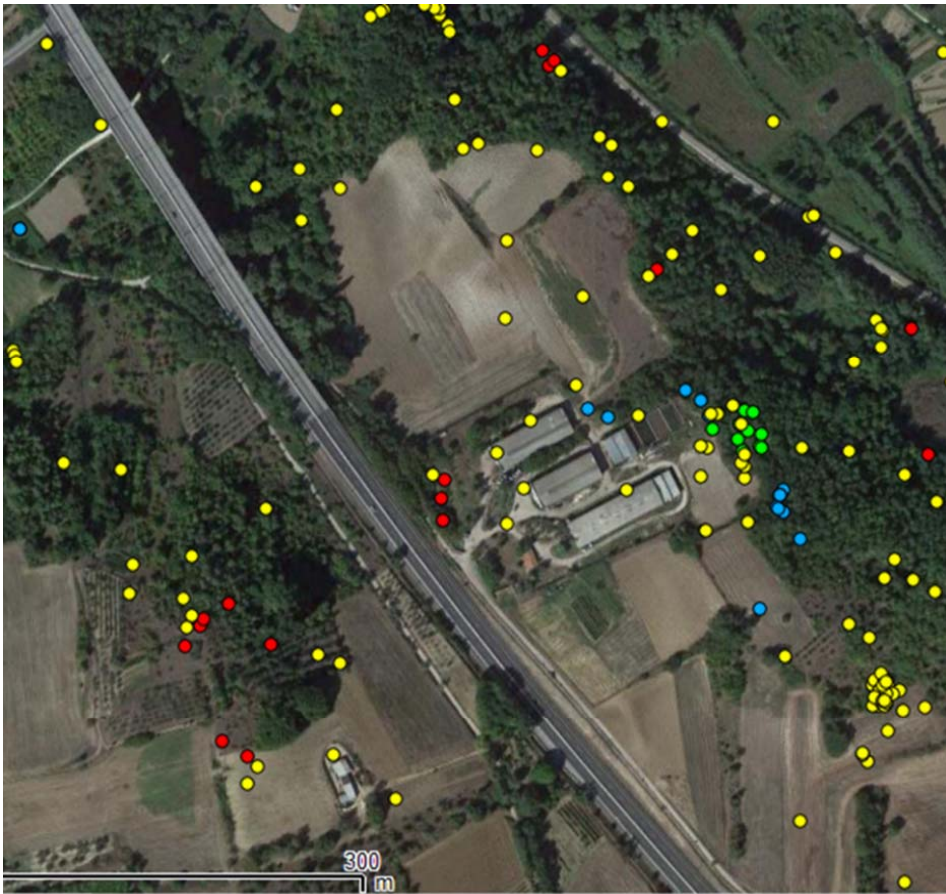


Roma, 3 e 4 dicembre 2018



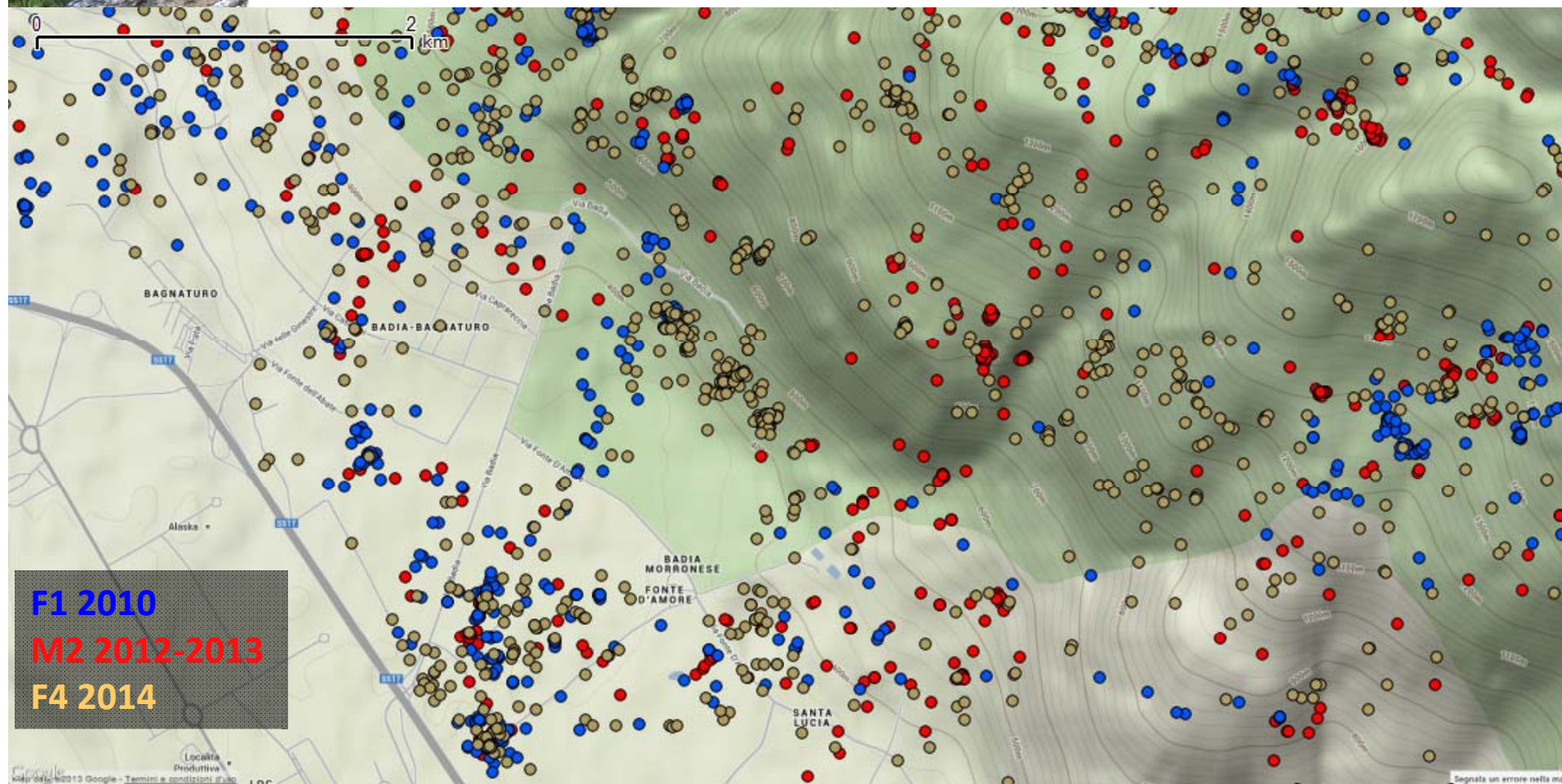
DI MONITORAGGIO DEL LUPO

LUPI PROBLEMATICI.....



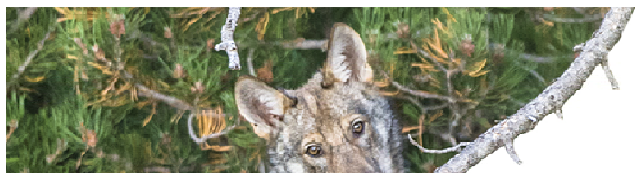


LUPI PROBLEMATICI.....



Roma, 3 e 4 dicembre 2018

VERSO UN PIANO NAZIONALE
DI MONITORAGGIO DEL LUPO



LUPI PROBLEMATICI.....



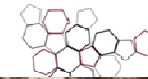
Roma, 3 e 4 dicembre 2018



Ph Bruno D'Amicis

VERSO UN PIANO NAZIONALE
DI MONITORAGGIO DEL LUPO

MORTALITÀ DI ORIGINE ANTROPICA



- 2 lupi finiti in lacci d'acciaio
- 3 lupi avvelenati
- 2 lupi investiti
- 2 scomparsi per sospetti atti di bracconaggio
- 1 morto per altre cause antropiche

In media a distanza di 7 mesi dalla cattura



onale
ne
ante

Altri 30 lupi rinvenuti morti dal 2010 al 2018, 25 dei quali per cause antropiche



Roma, 3 e 4 dicembre 2018



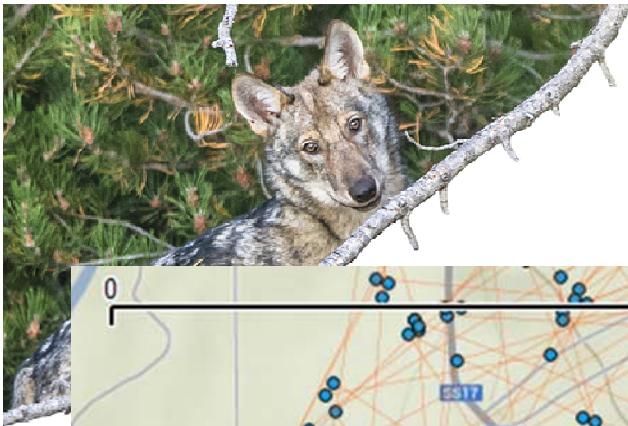
ALE
PO

MORTALITÀ DI ORIGINE ANTROPICA

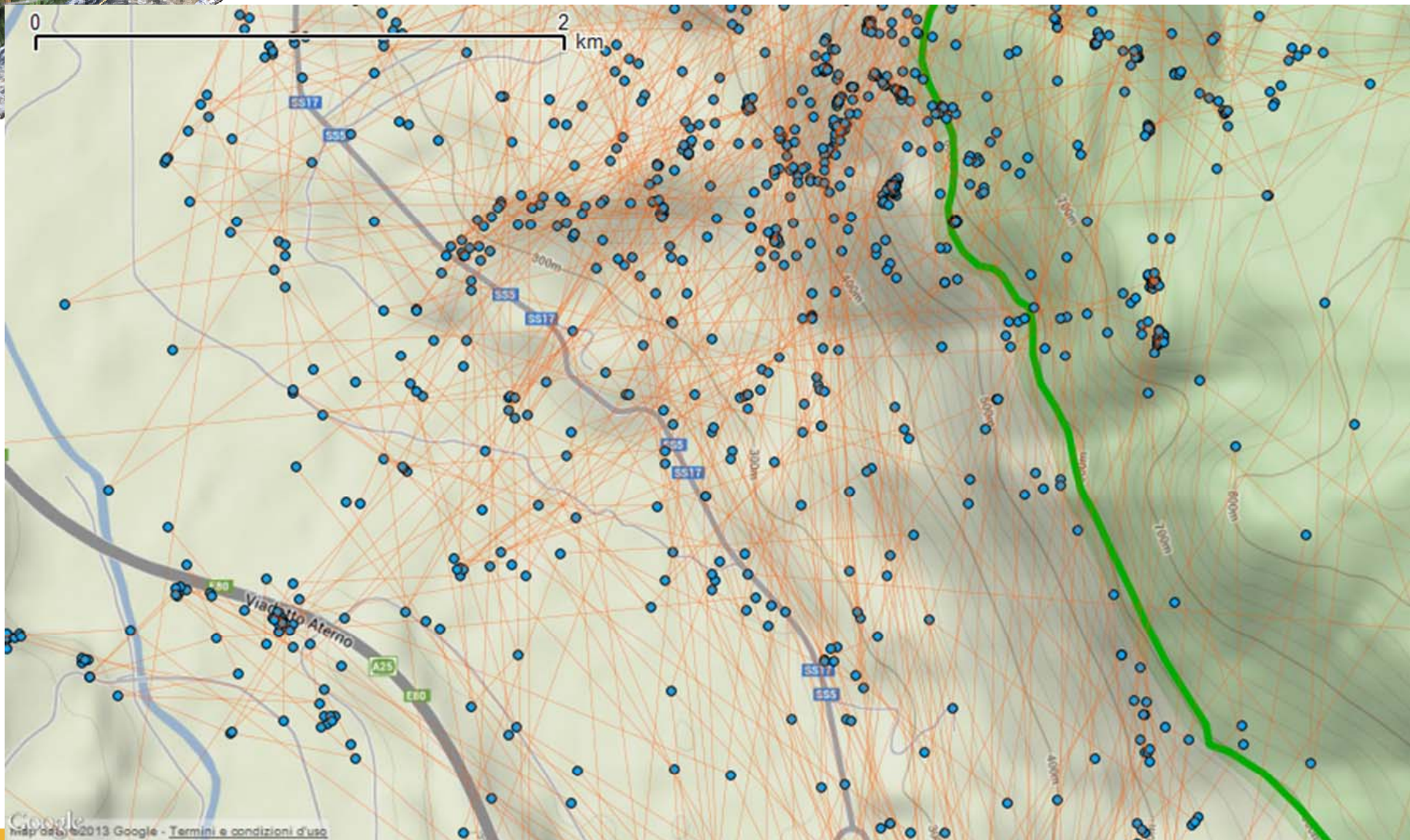


Roma, 3 e 4 dicembre 2018

VERSO UN PIANO NAZIONALE
DI MONITORAGGIO DEL LUPO

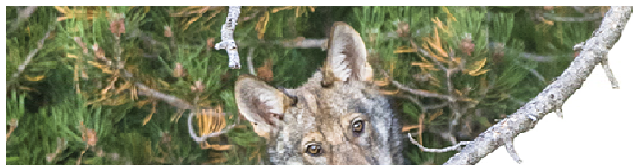


MORTALITÀ DI ORIGINE ANTROPICA

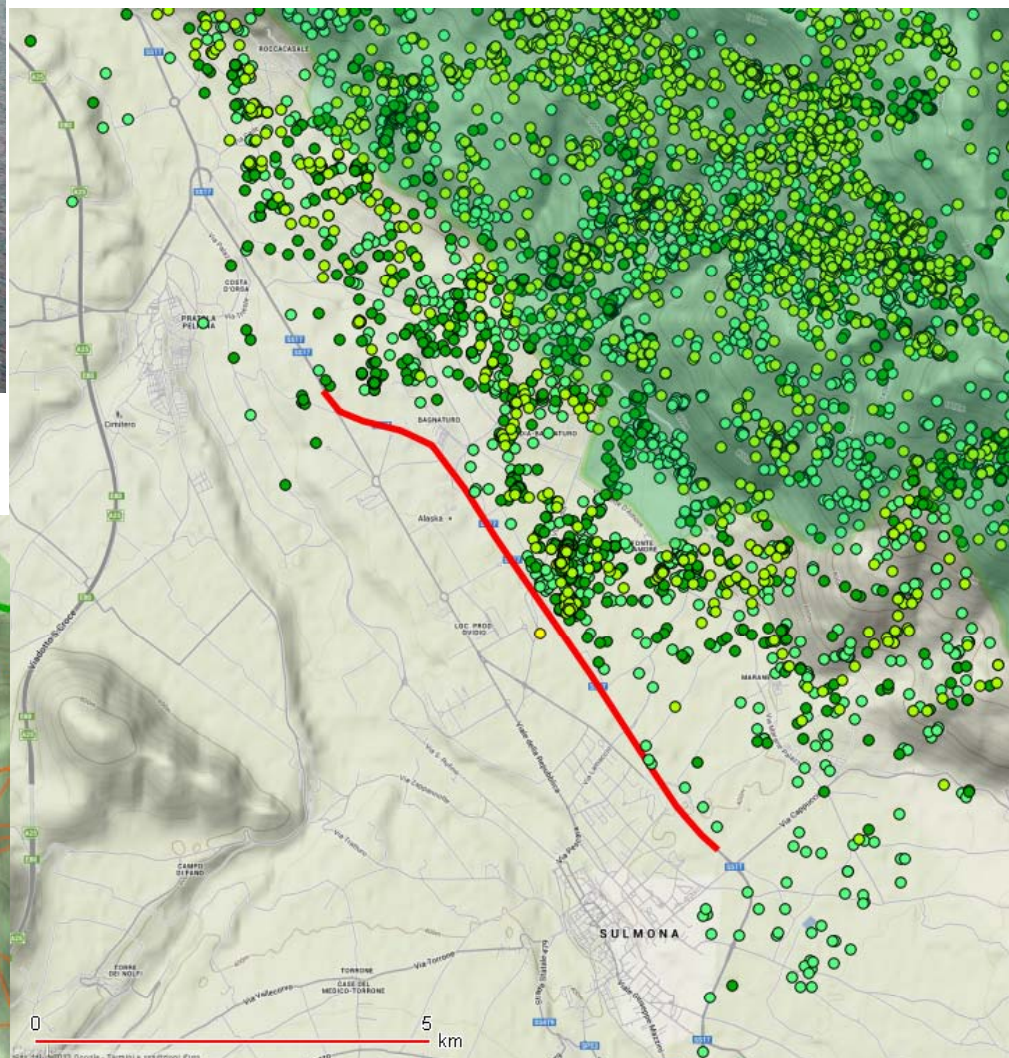
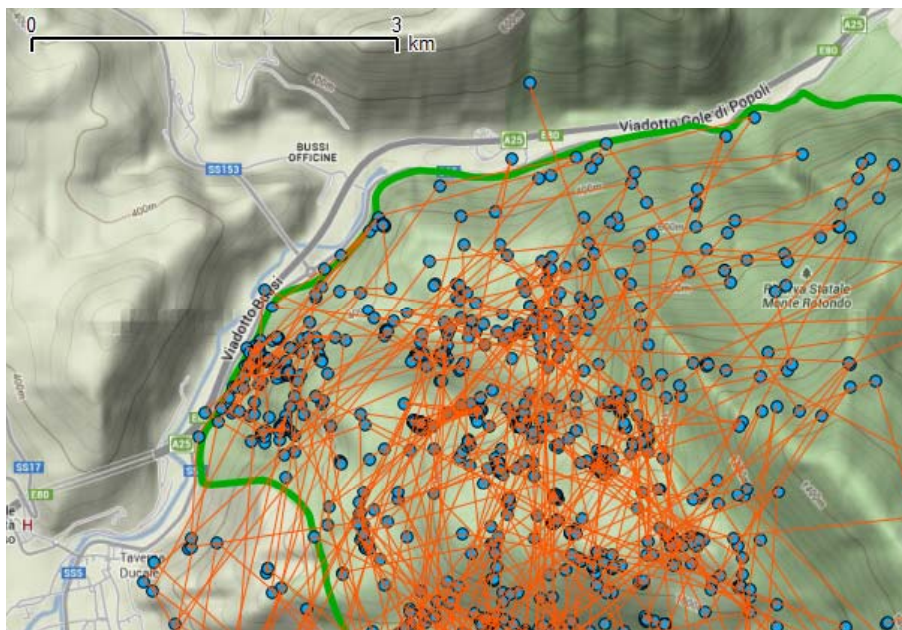


Roma, 3 e 4 dicembre 2018

VERSUS UN PIANO NAZIONALE
DI MONITORAGGIO DEL LUPO

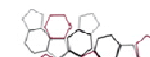


MORTALITÀ DI ORIGINE ANTROPICA

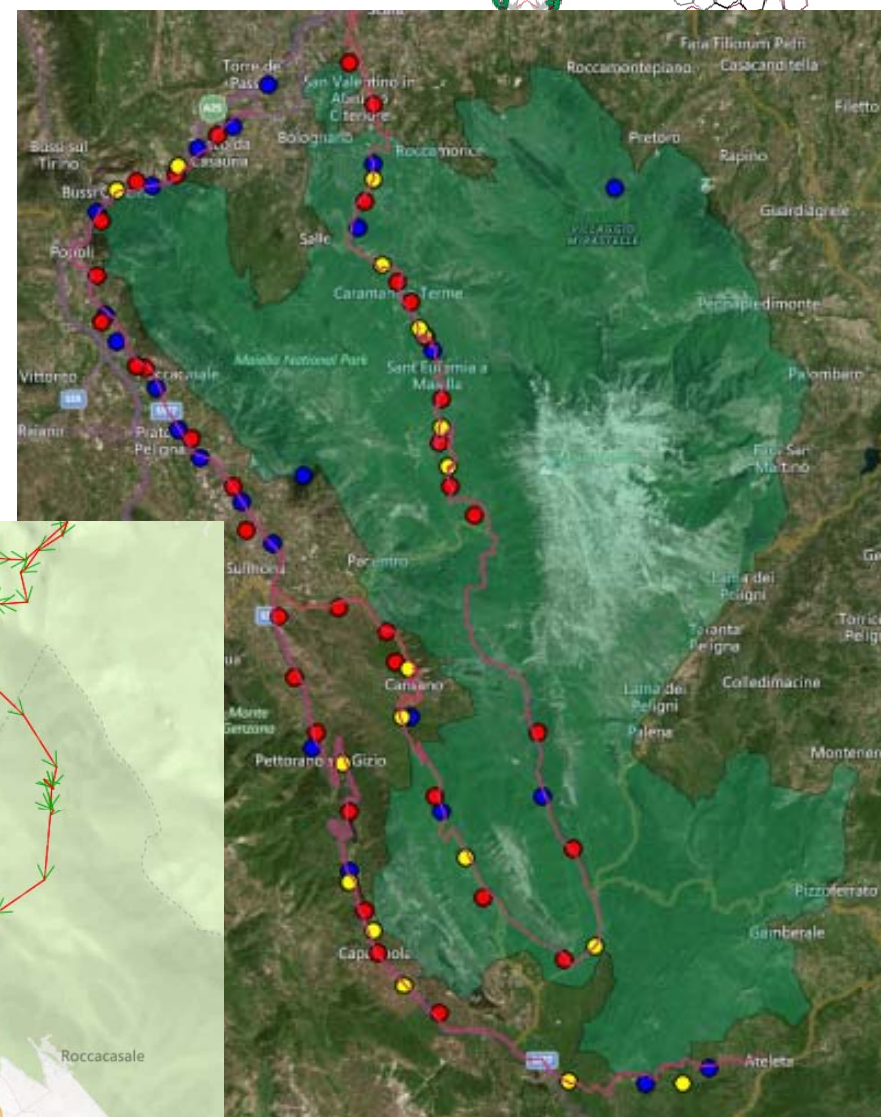
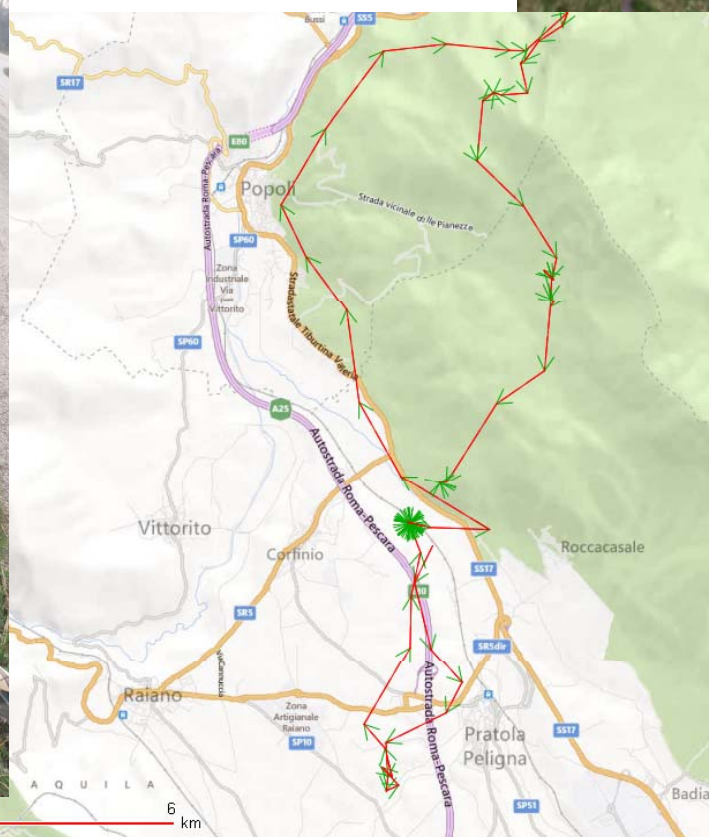


VERSO UN PIANO NAZIONALE
DI MONITORAGGIO DEL LUPO

MORTALITÀ DI ORIGINE ANTROPICA



SPECIE (2005-2018)	N.
Cervo	16
Capriolo	22
Cinghiale	35
Lupo	23
Gatto selvatico	13
	109

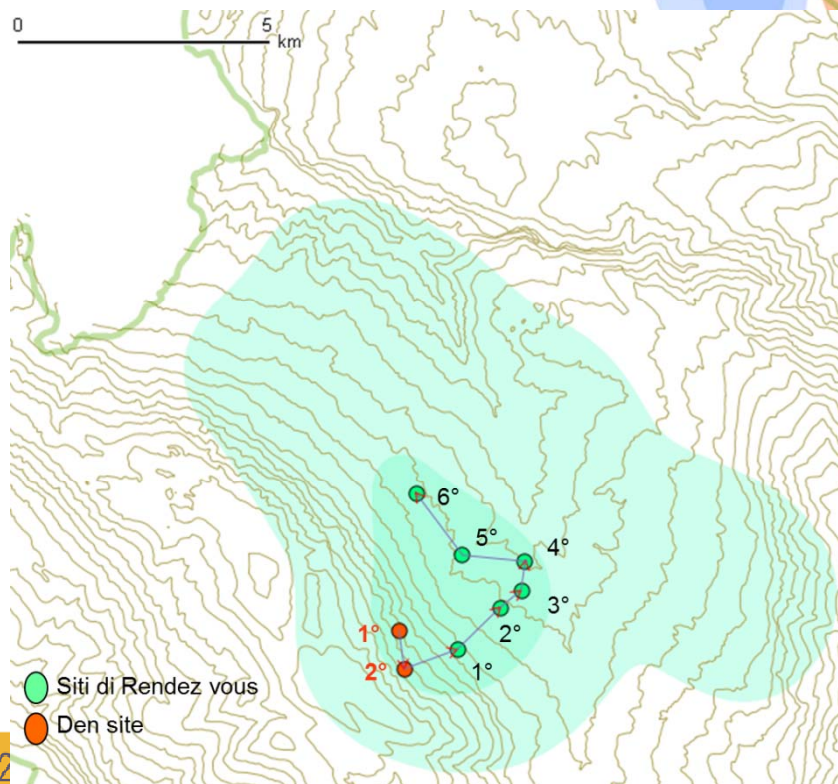
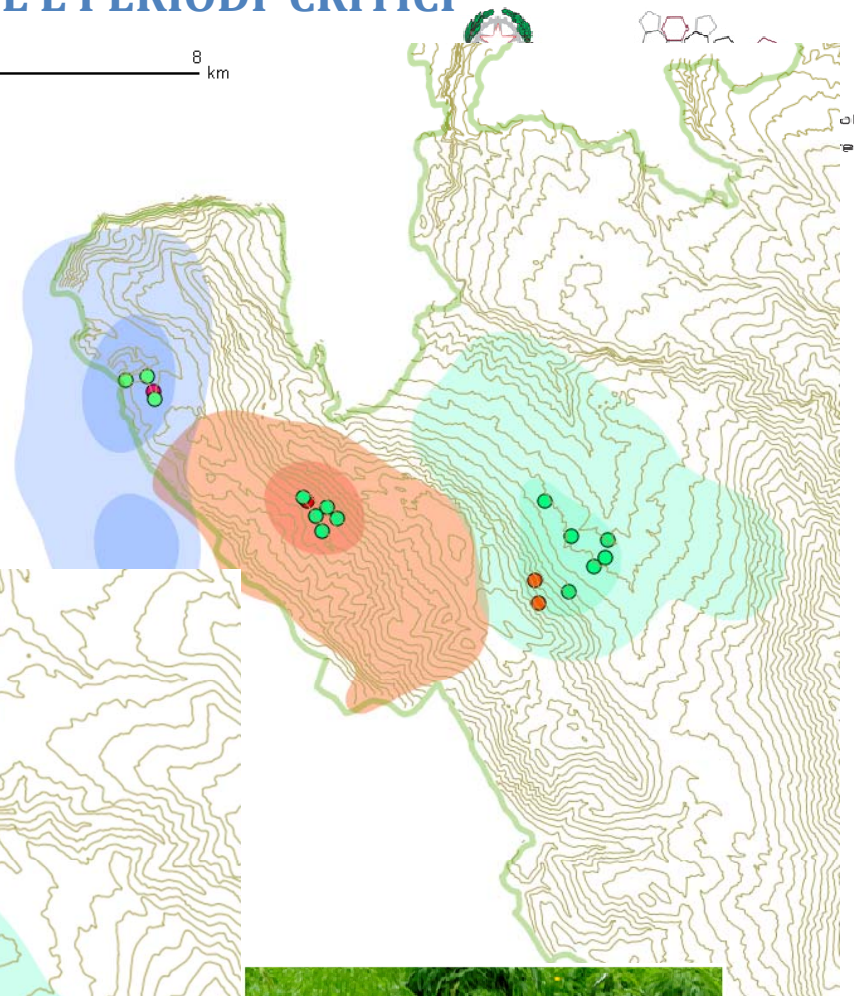


VERSO UN PIANO NAZIONALE
DI MONITORAGGIO DEL LUPO



DISTURBO IN AREE E PERIODI CRITICI

0 8 km



TIPOLOGIA	PERIODO DI USO
1° Den Site	17May-8 June
2° Den Site	8 June -12 July
1°RV site	13 July -17 August
2° RV site	18 -26 August
3° RV site	27 August - 14 Sept.
4° RV site	16- 30 September



ONALE
DI MONITORAGGIO DEL LUPO

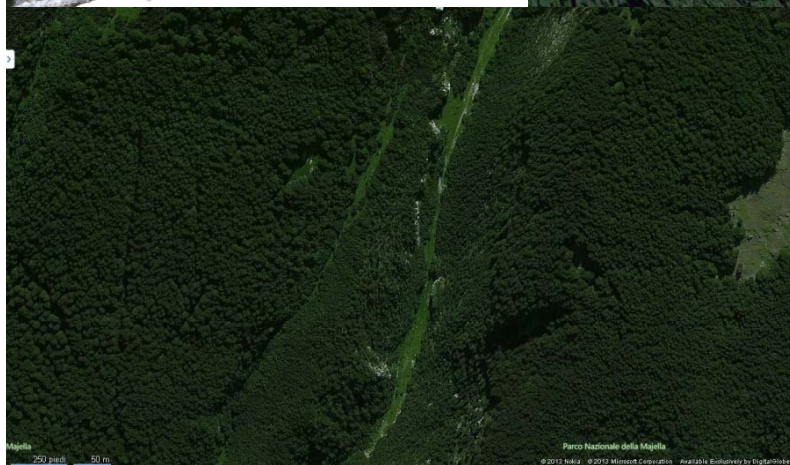
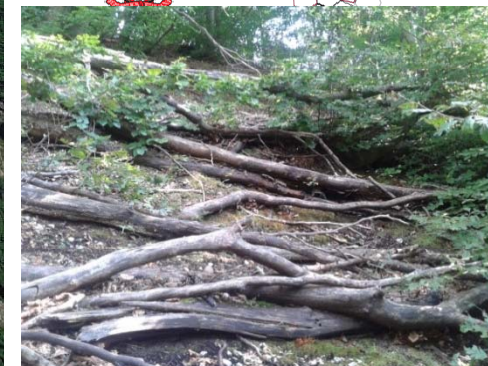
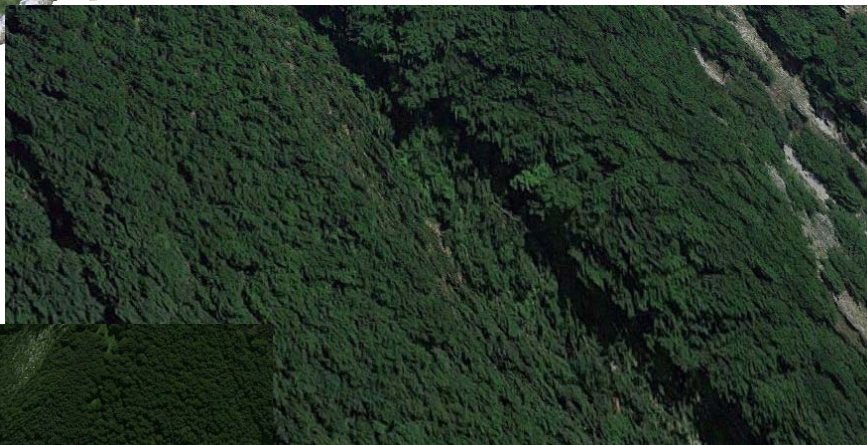
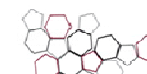
Roma, 3 e 4 dicembre 2012



Roma, 3 e 4 dicembre 2018

VERSO UN PIANO NAZIONALE
DI MONITORAGGIO DEL LUPO

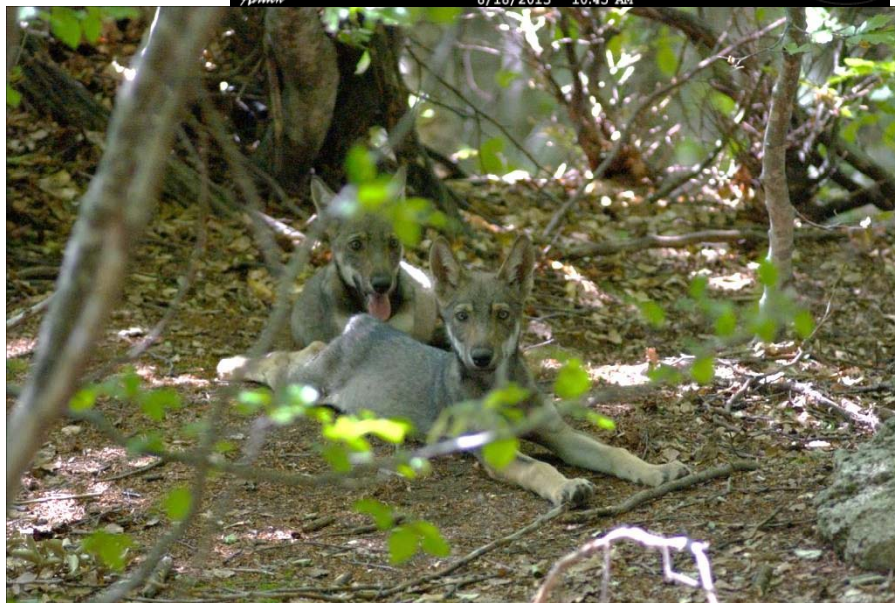
DISTURBO IN AREE E PERIODI CRITICI



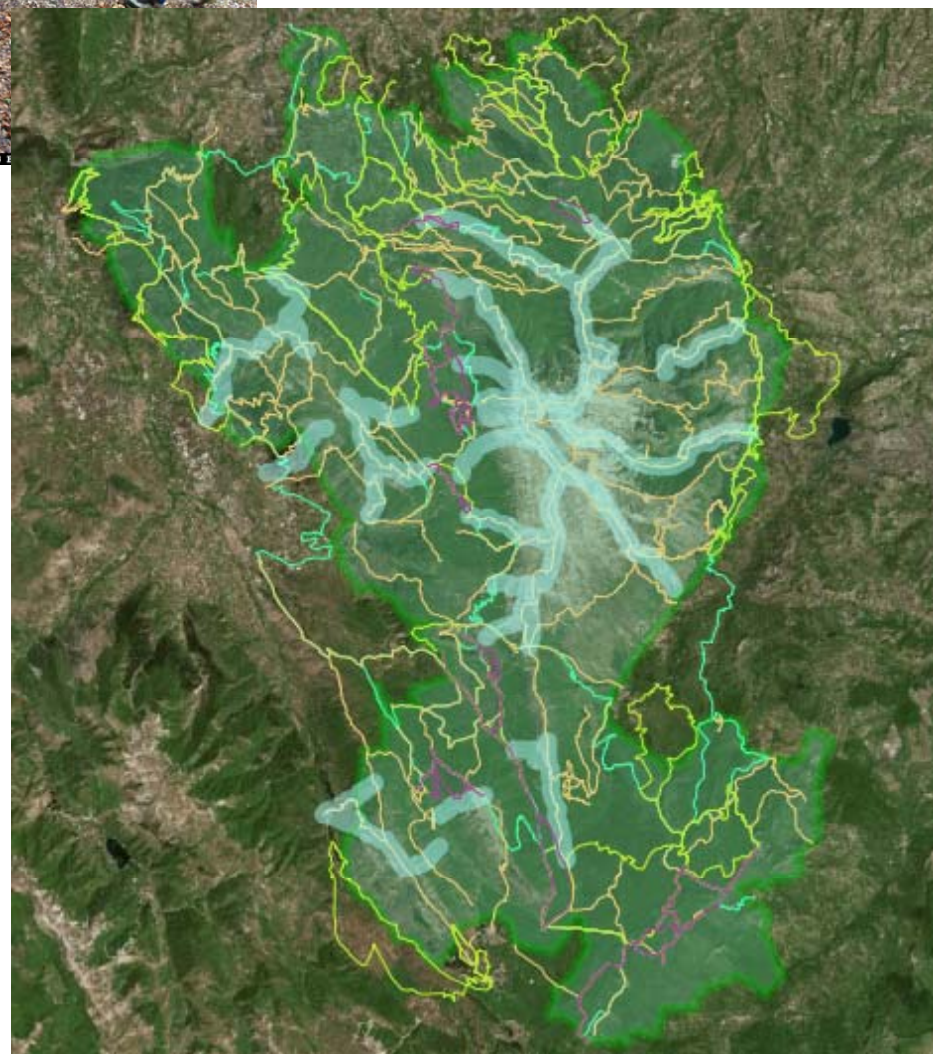
Roma, 3 e 4 dicembre 2018

NALE
LUPO

DISTURBO IN AREE E PERIODI CRITICI



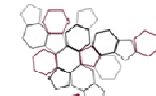
Roma, 3 e 4 dicembre 2018



DISTURBO IN AREE E PERIODI CRITICI

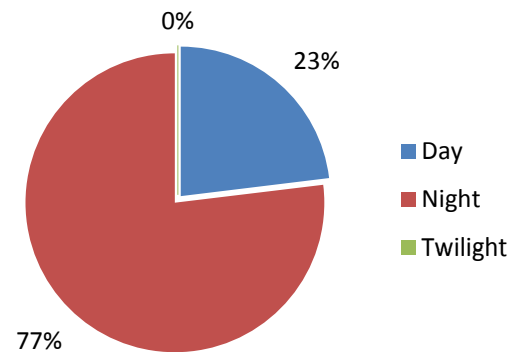


ISPRA
Istituto Superiore per la Protezione
e l'Ambiente

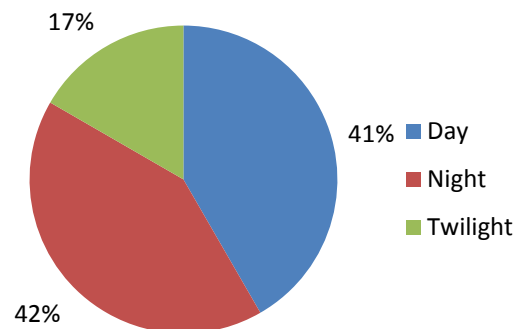


**Sistema Nazionale
per la Protezione
dell'Ambiente**

Predation clusters October - April



Predation clusters in May - September



Roma, 3 e 4 dicembre 2018

VERSO UN PIANO NAZIONALE
DI MONITORAGGIO DEL LUPO



GRAZIE PER L'ATTENZIONE



Roma, 3 e 4 dicembre 2018



VERSO UN PIANO NAZIONALE
DI MONITORAGGIO DEL LUPO