

Il progetto LIFE SAM4CP

“Soil administration Models 4 Community Profit”



Michele Munafò

Realizzare uno strumento di supporto alle decisioni (simulatore) per valutare le perdite, sia in termini ambientali che economici, derivanti dai processi di urbanizzazione, dal consumo di suolo e dalle trasformazioni territoriali. (È necessario andare oltre la misura quantitativa del fenomeno).

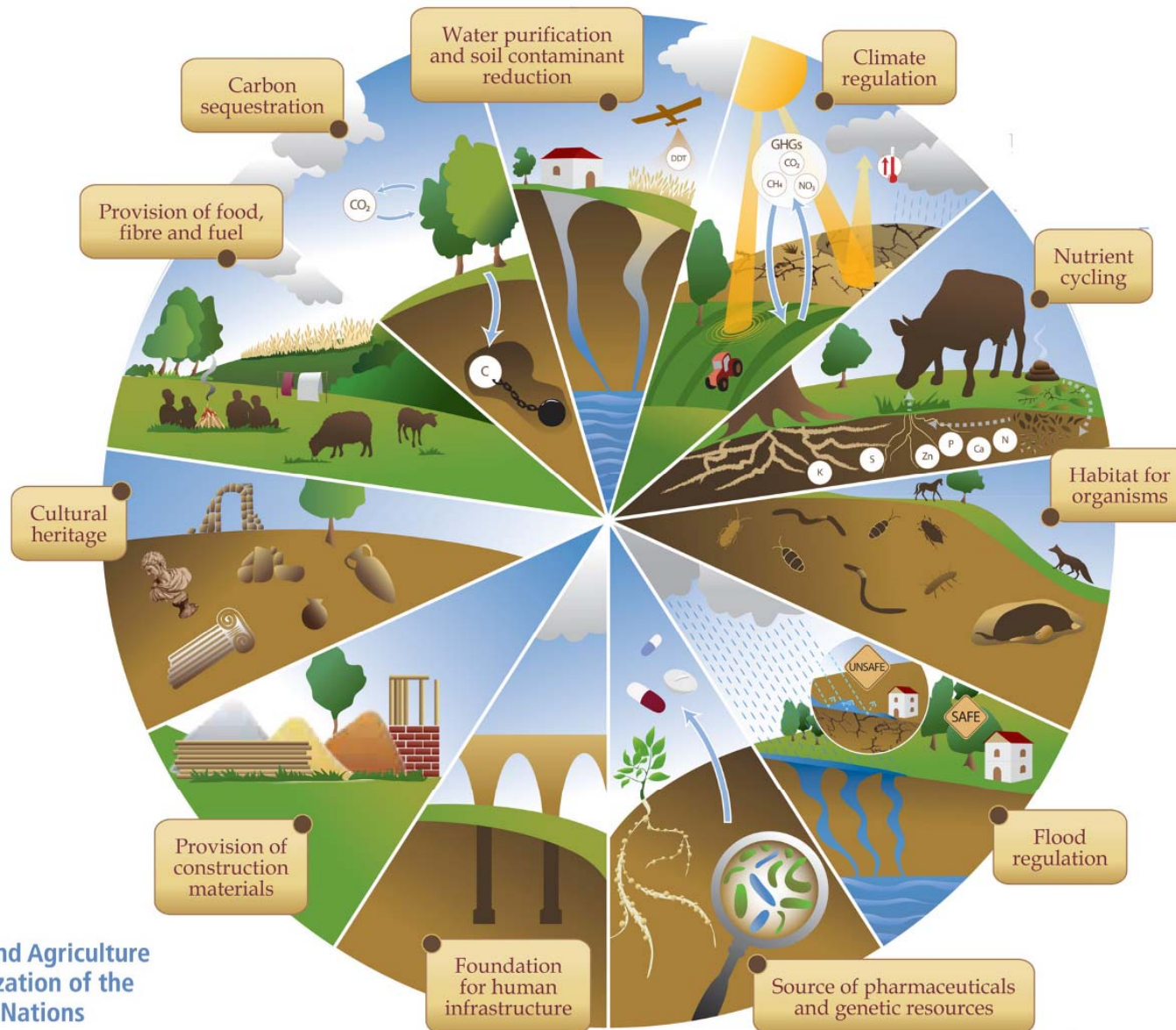
LIFE13 ENV/IT/001218 LIFE+ Environment Policy and Governance





Servizi ecosistemici del suolo

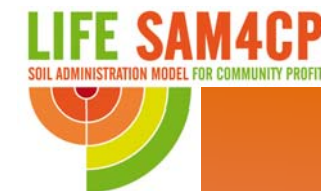
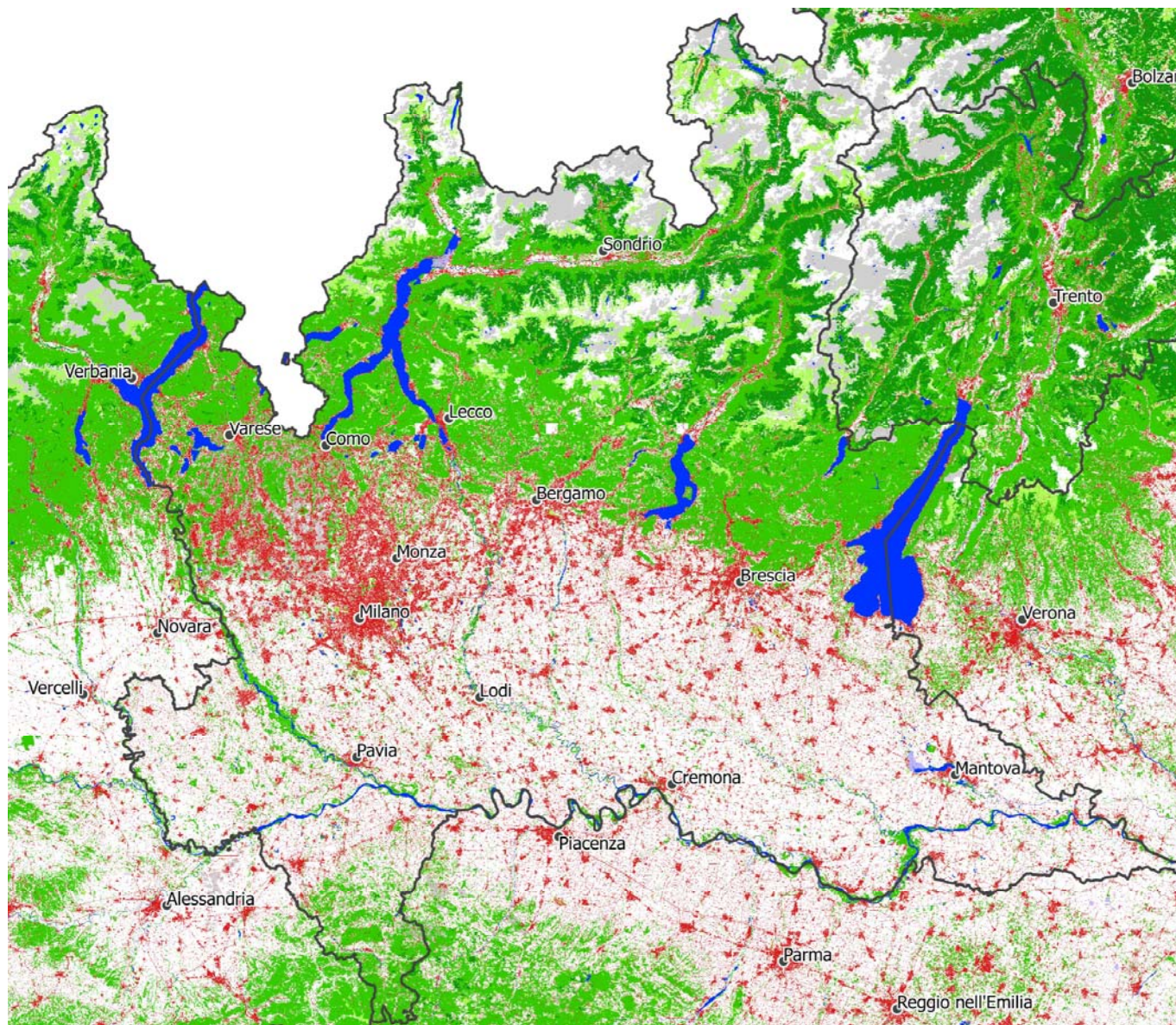
LIFE SAM4CP
SOIL ADMINISTRATION MODEL FOR COMMUNITY PROFIT



Food and Agriculture
Organization of the
United Nations

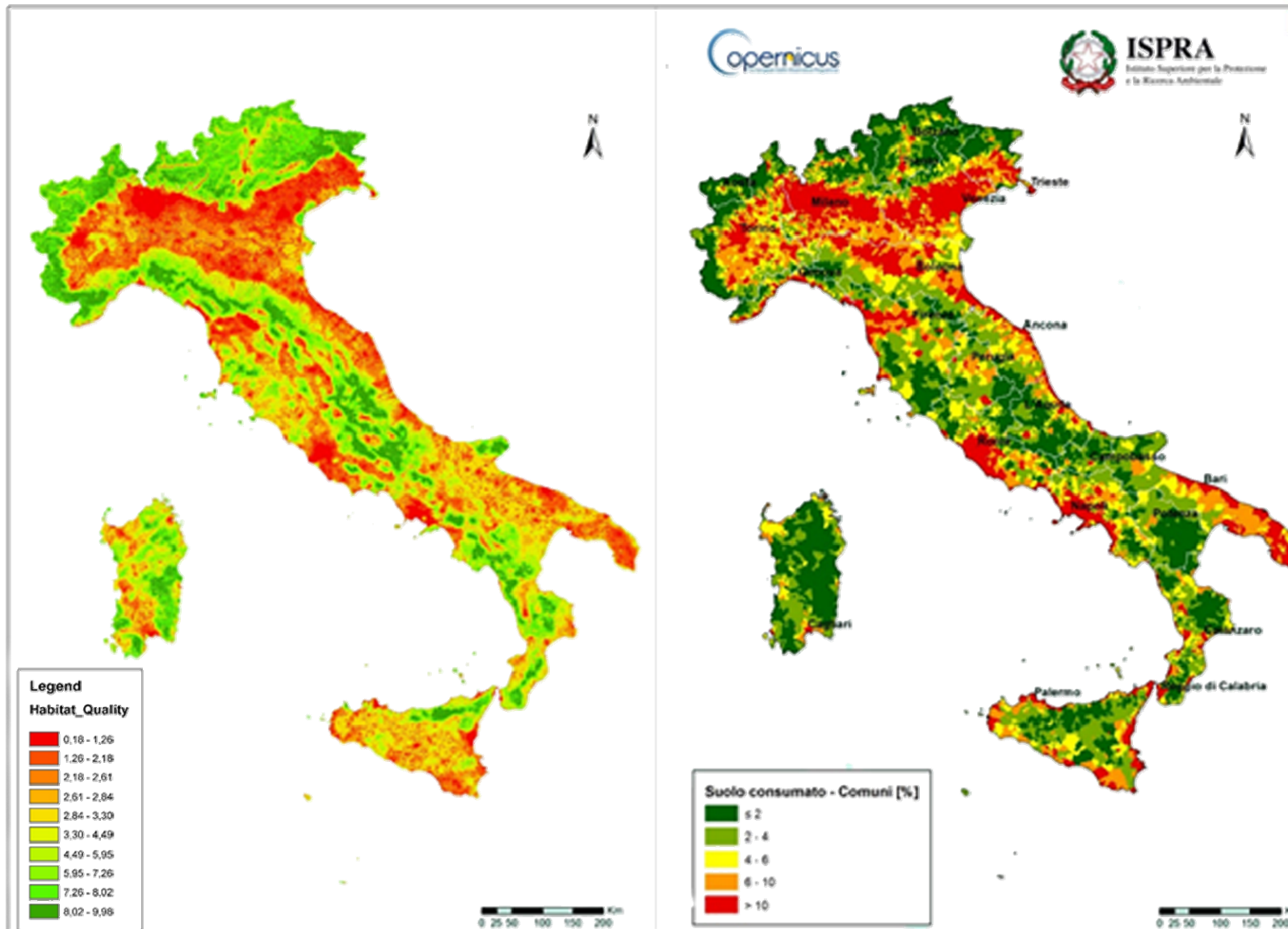
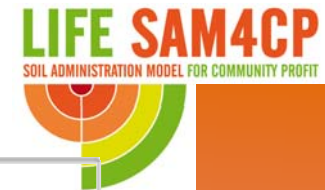


I dati di input – copertura del suolo



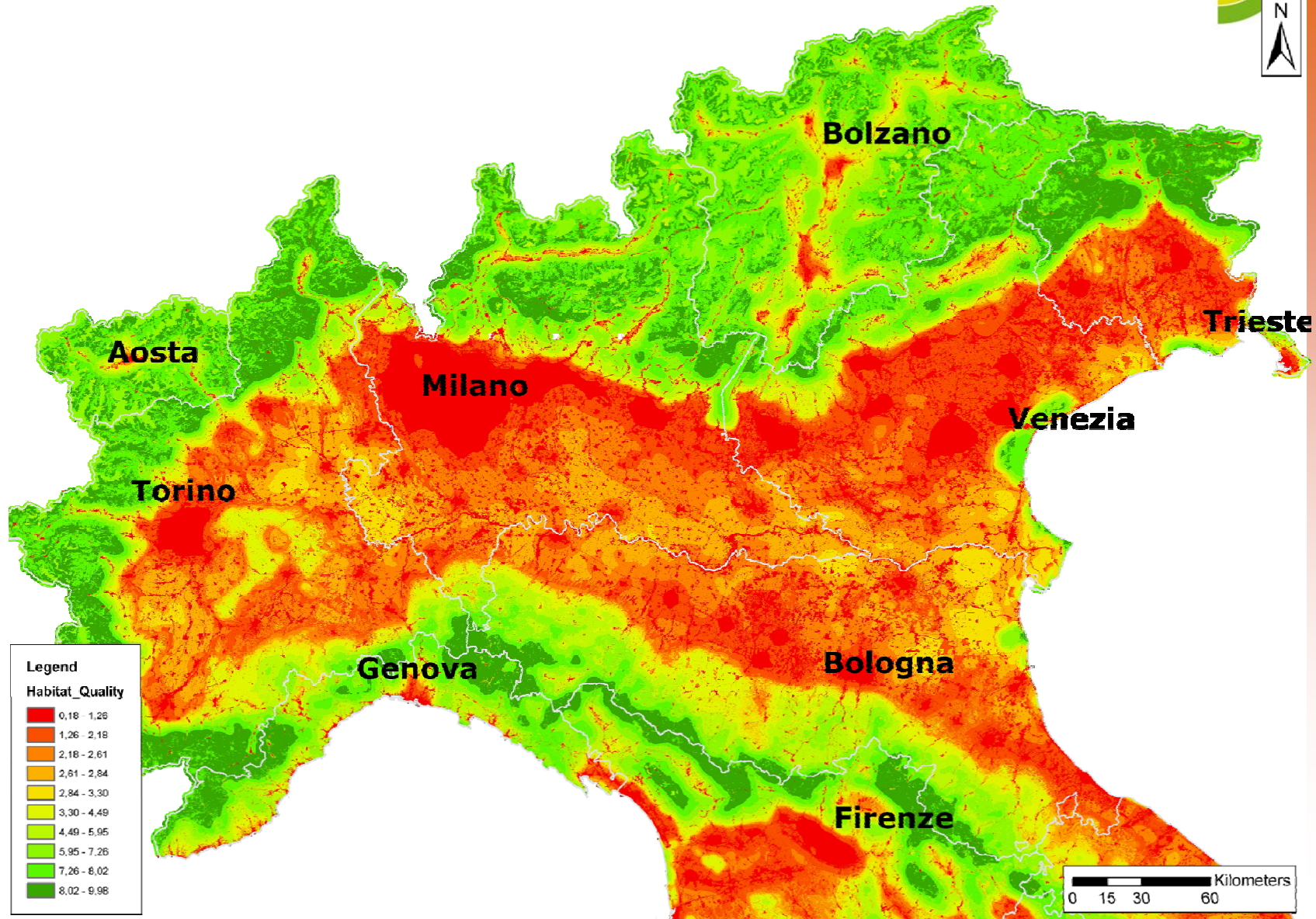
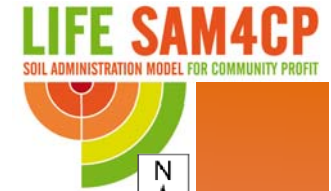


Habitat Quality / Consumo di suolo



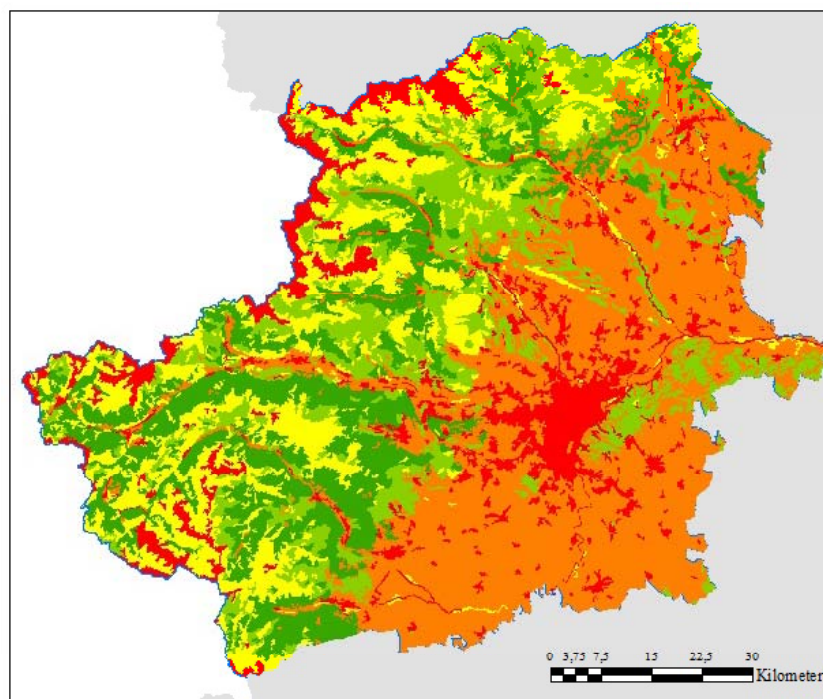
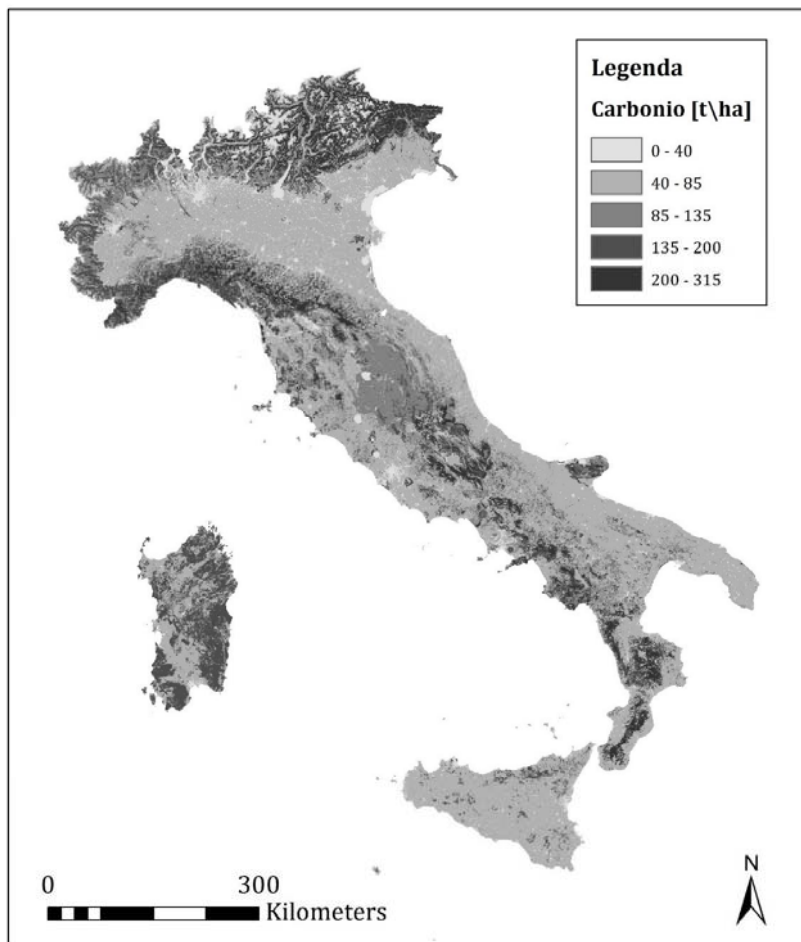
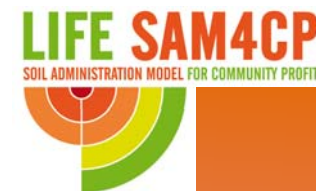


Habitat Quality



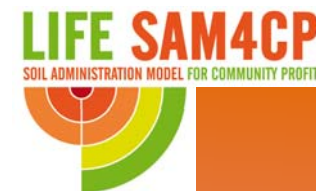


Carbon Storage

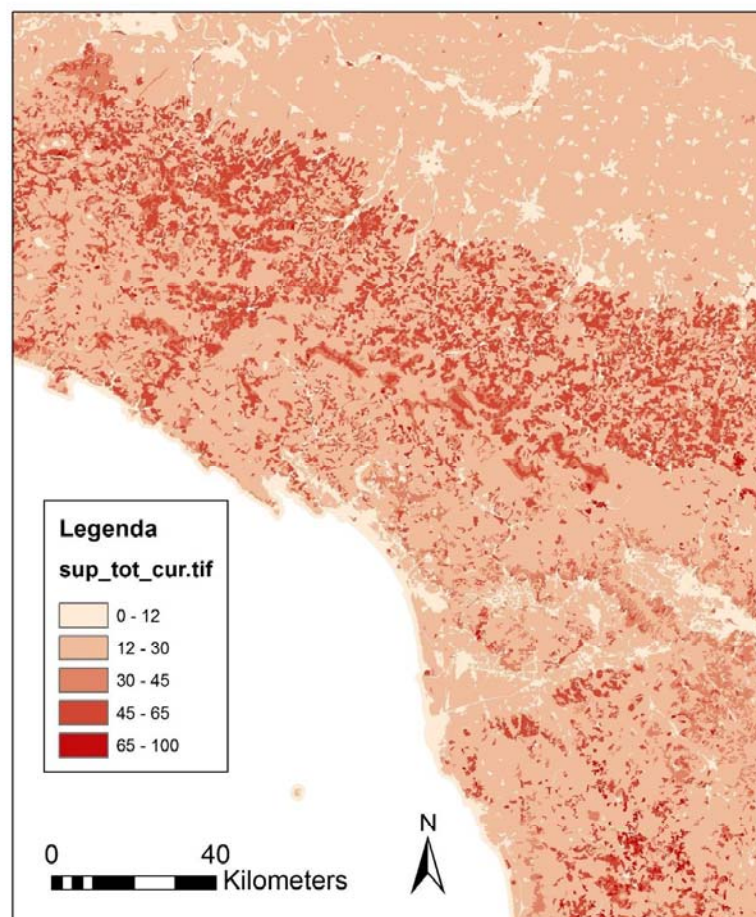
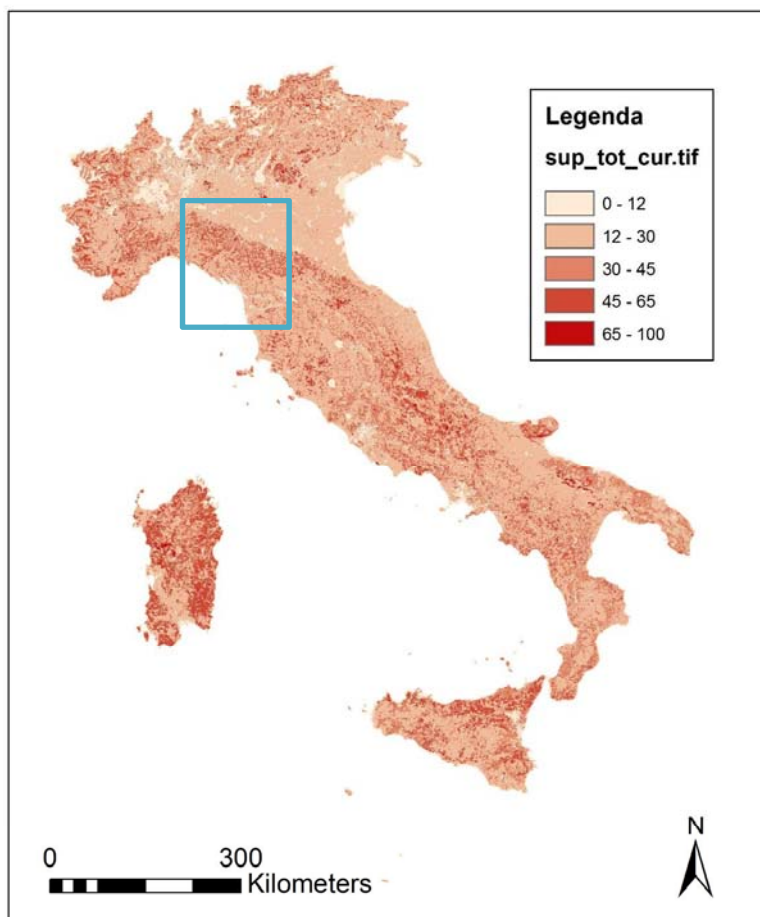




Pollination

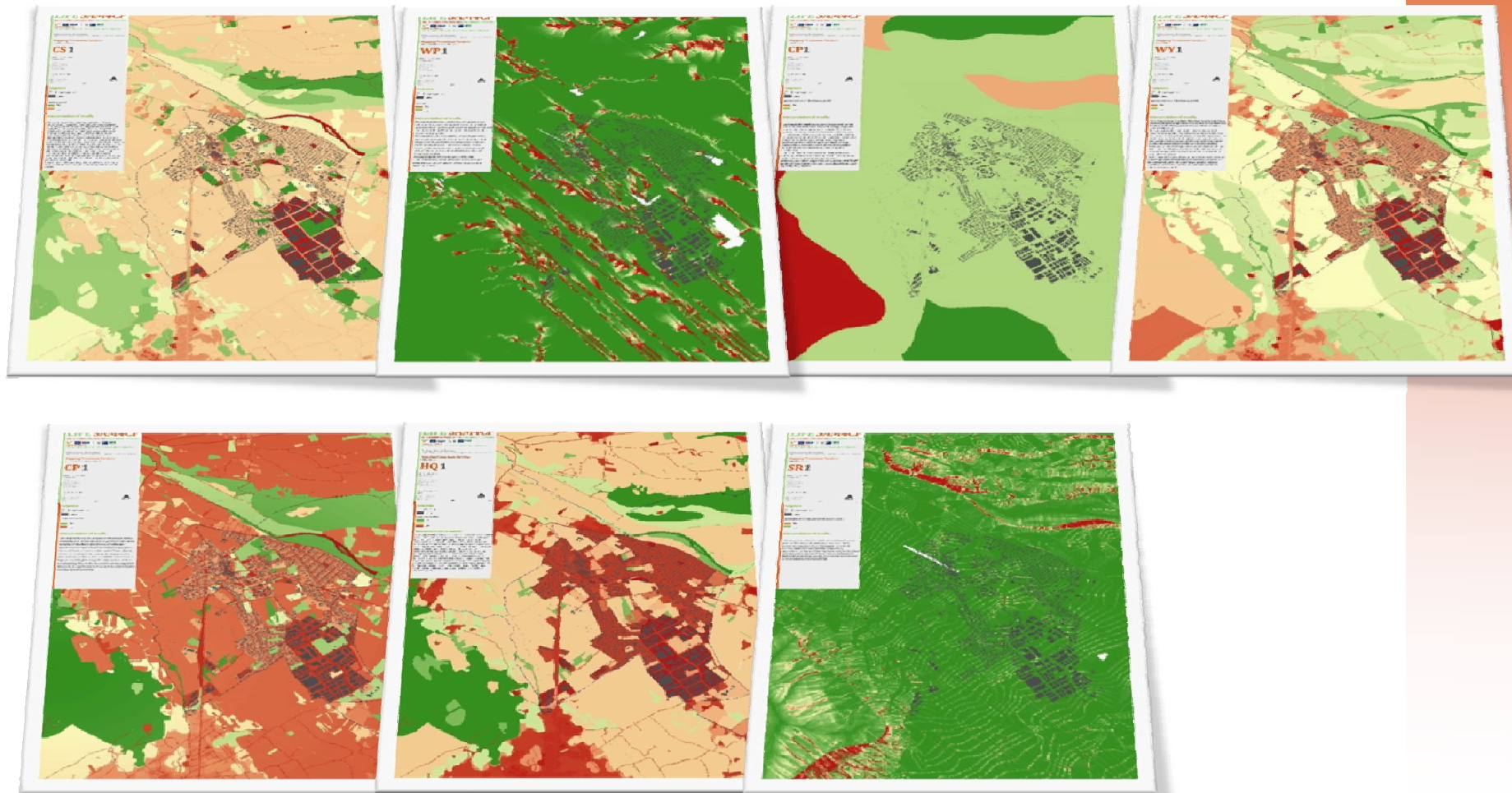


Indice (1 – 100) relativo all'abbondanza di impollinatori, somma di tutte le specie considerate.



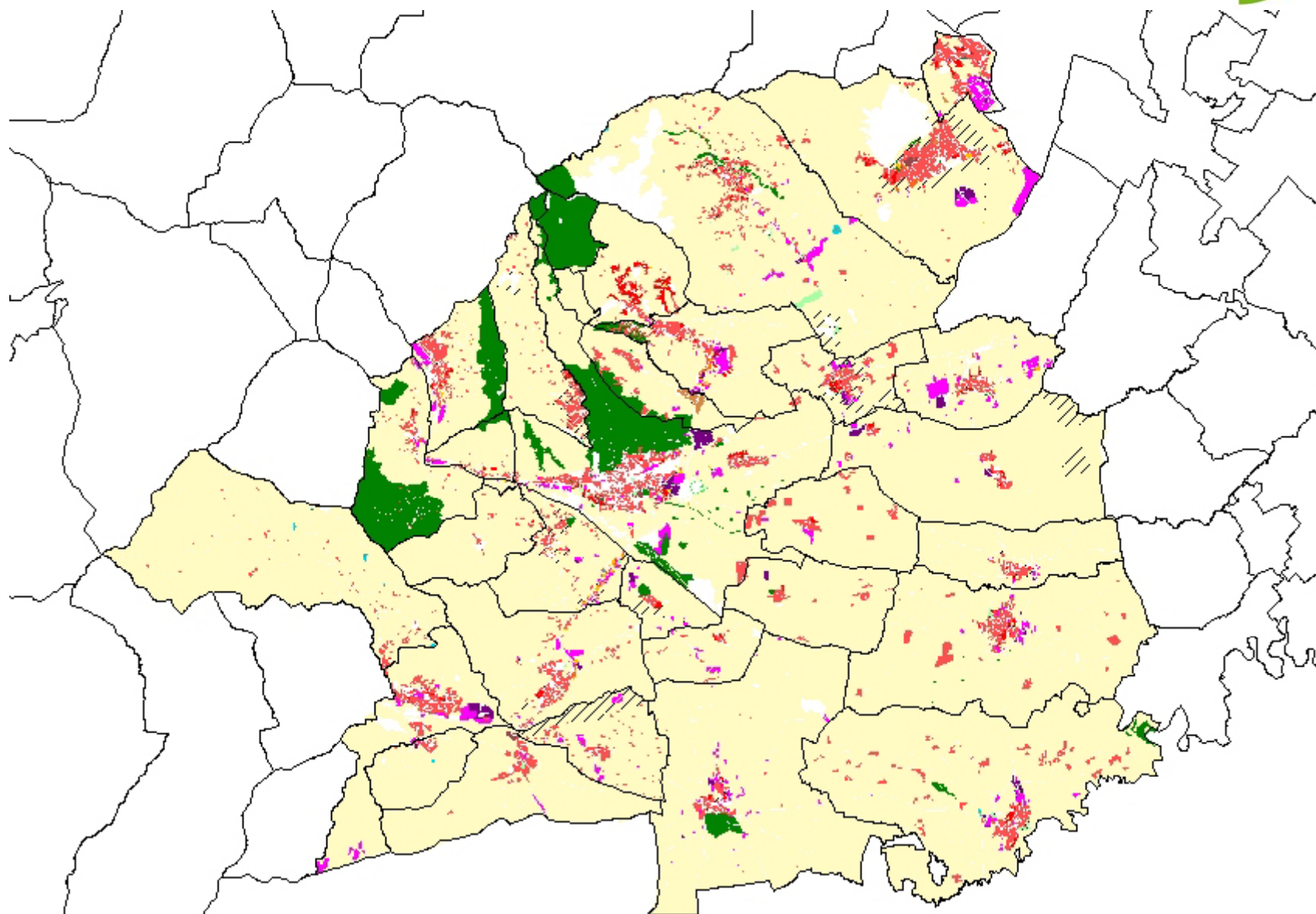


Valutazione e mappatura dei Servizi ecosistemici





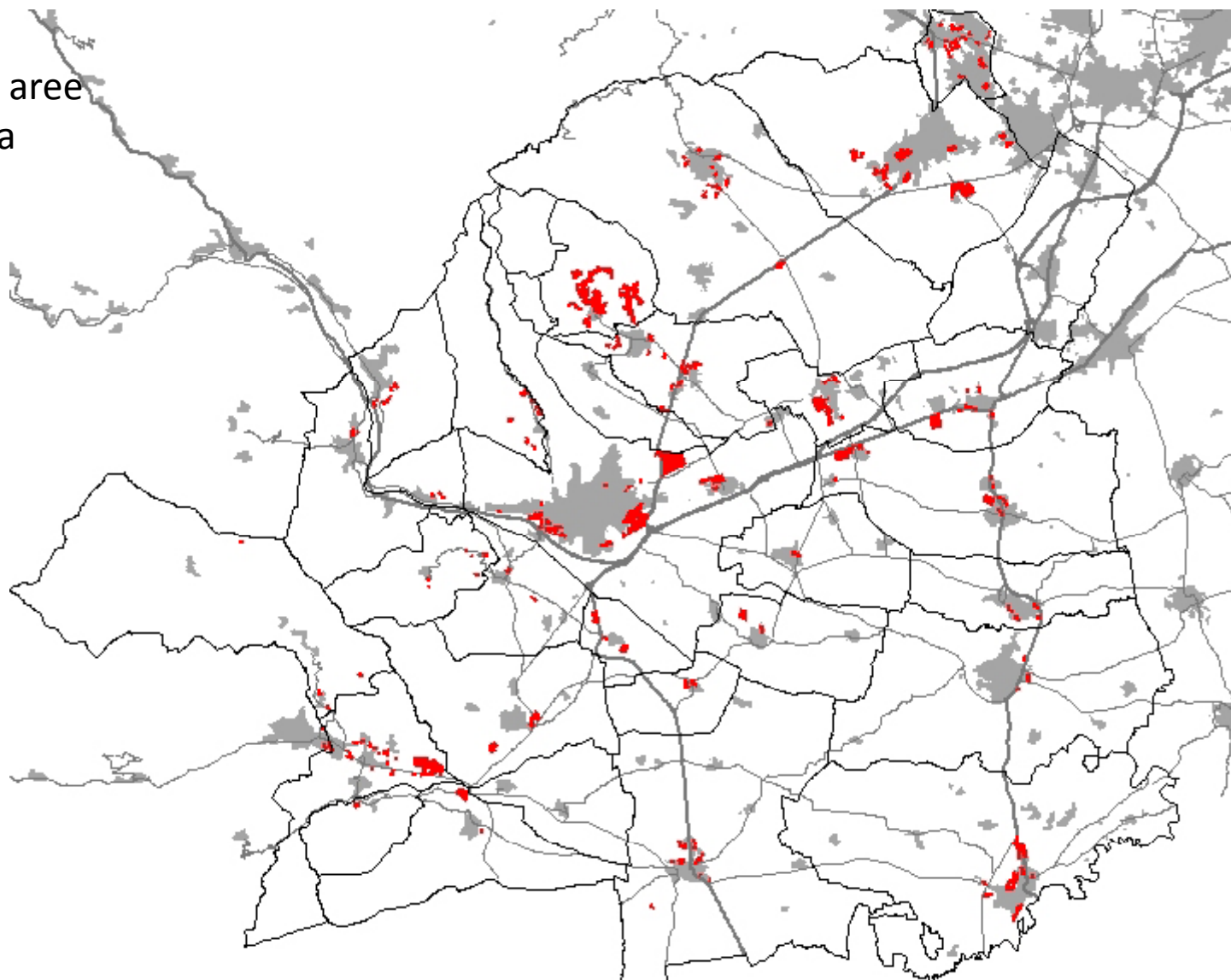
Mosaicultura PRGC





Aree edificabili da PRGC

Totale aree
492 Ha







le aree di espansione sono state sovrapposte all'ortofoto per visualizzare quali sono già state edificate e quali invece sono ancora disponibili.





Esempio di aree già attuate

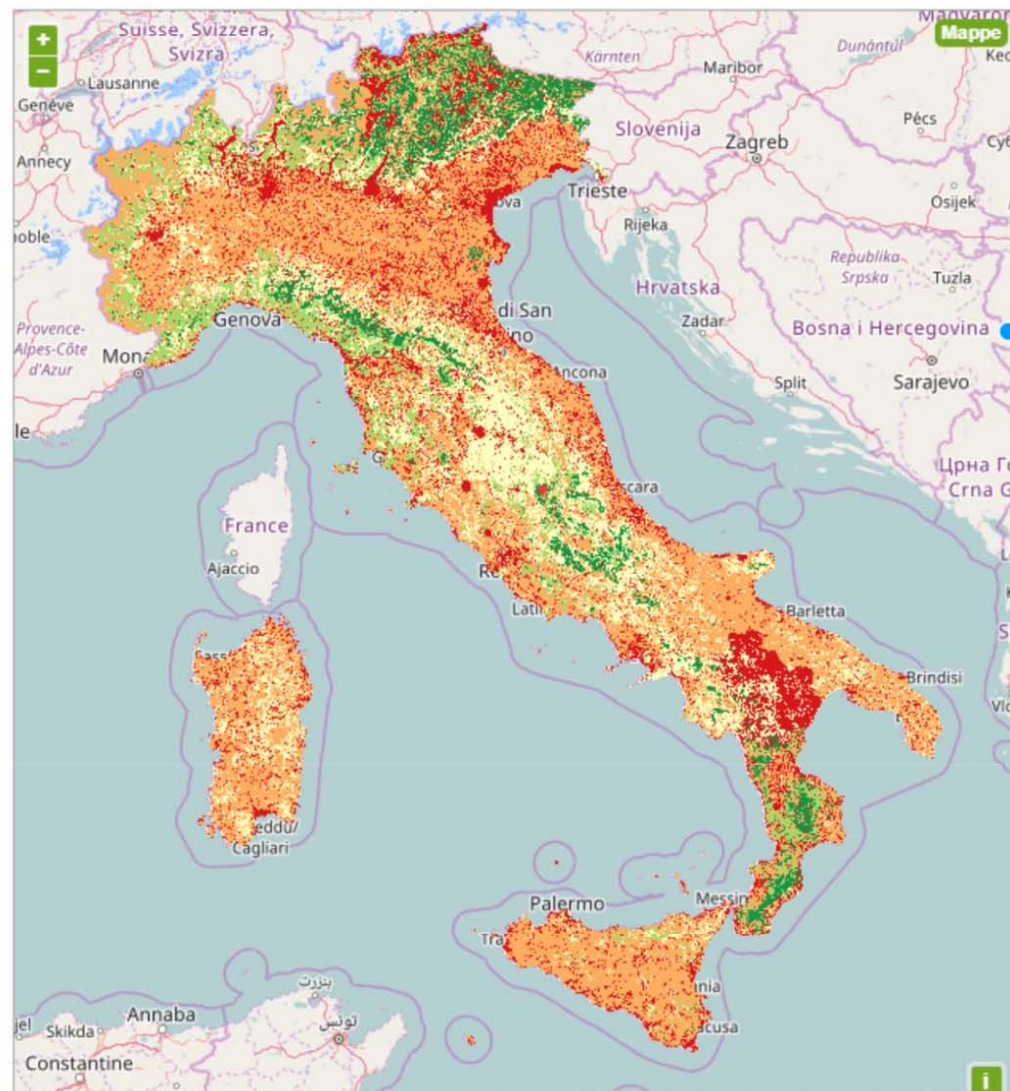




Disegna un'area sulla mappa per conoscerne il valore e confrontare il nuovo uso del suolo.

ITALIA > regione: UMBRIA
(PERUGIA)

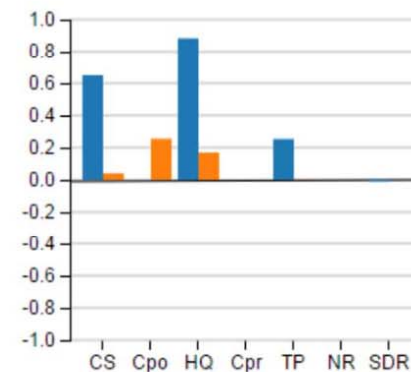
Cerca comune



-0.39 €/mq

stima economica

Valore simulato ■
Valore attuale ■



Valore medio per un'area di 82.4 mq x 1000 (208 pixel).

servizio	v.m.	Dif	u.m.
CS - Carbonio	6.88	-6.34	t/px
Cpo - Impollinazione	0.00	0.26	-
HQ - Qualità Habitat	0.88	-0.71	-
Cpr - Produzione Agricola	0.00	46.30	€/ha
TP - Produzione Legnosa	4808.35	-4721.64	€/ha
NR - Purificazione Acqua	0.00	0.03	kg/px
SDR - Mitigazione Erosione	38.79	-29.26	t/px

Simulazioni

[Scarica](#) [Salva](#)

