

Jelly

SYSTEMS AND TOOLS FOR LOCATING
BLOOM OF JELLYFISH AND PREDICTING
THEIR DISPLACEMENT TOWARDS
THE COAST



avvistAPP

how to get jellyfish sightings by a click!

Valentina Tirelli

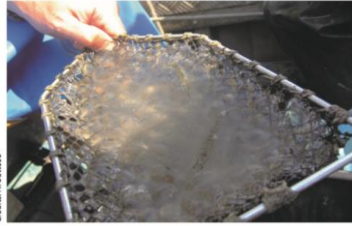
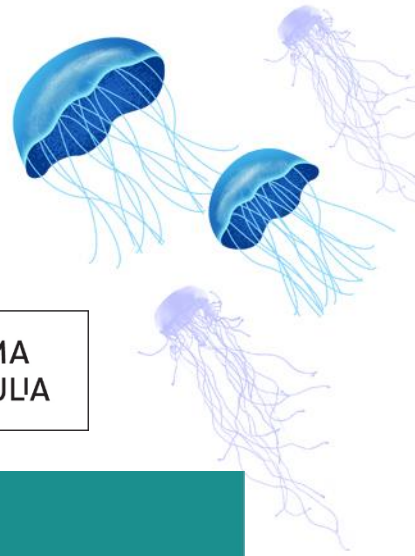


OGS
National Institute
of Oceanography
and Applied
Geophysics





Project NOCE DI MARE



Mnemiopsis leidyi in fisherman's net



REGIONE AUTONOMA
FRIULI VENEZIA GIULIA



How to monitor the spreading of *Mnemiopsis* in the Gulf of Trieste (northern Adriatic Sea)?

INFO:
Where?
When?
How many?



Citizens!

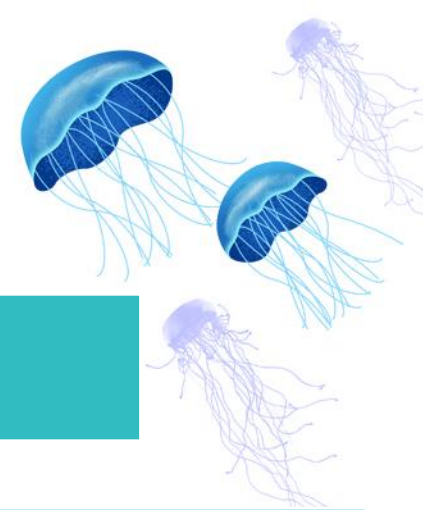
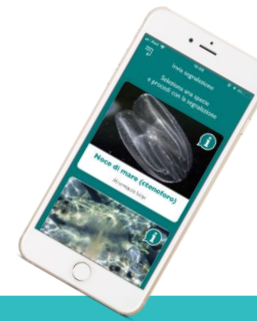
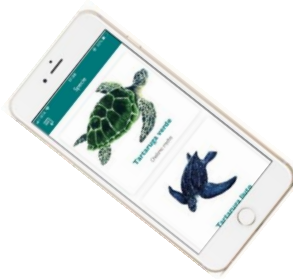


HELP!



Jelly

SYSTEMS AND TOOLS FOR LOCATING BLOOM OF JELLYFISH AND PREDICTING THEIR DISPLACEMENT TOWARDS THE COAST



avvistAPP is a citizen science mobile app, freely available for iOS and Android, and working worldwide. The English version launched in 2020.



Citizens can download the app on their smartphone and send their sightings from everywhere simply by taking a photo with their mobile phone and sending it through the app

20 taxa

Ctenophores, jellyfish, dolphins, turtles, *Pinna nobilis*, Blue crab



every sighting is validated by researchers



avvistAPP was launched by OGS on 12 July 2019 and till now received more than 1500 sightings

REGIONE AUTONOMA FRIULI VENEZIA GIULIA

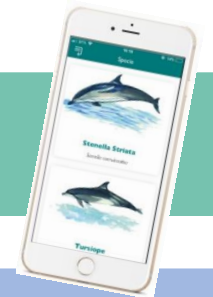
OGS Istituto Nazionale di Oceanografia e di Geofisica Sperimentale

Available on the App Store

ANDROID APP ON Google play

avvistAPP

APPLICATI! e condividi i tuoi avvistamenti in mare.
Ctenofori, meduse, tartarughe e delfini: segnalali con avvistAPP e aiutaci a studiarli.
Share your sightings of ctenophores, jellyfish, sea turtles and dolphins with a click!

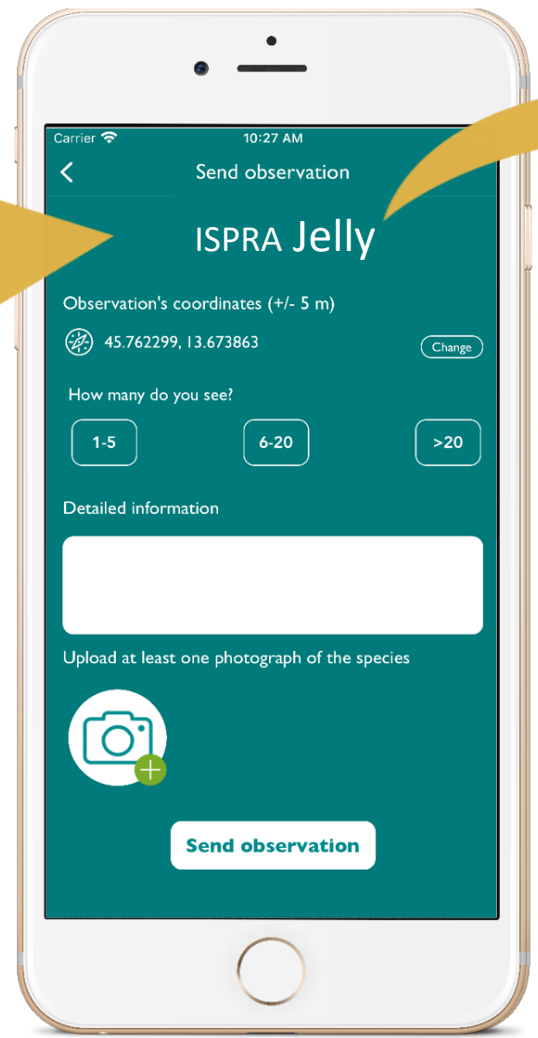


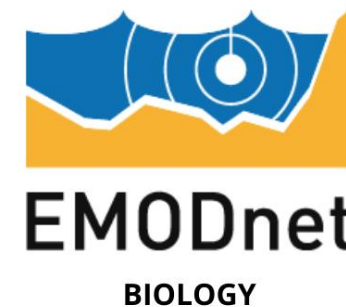
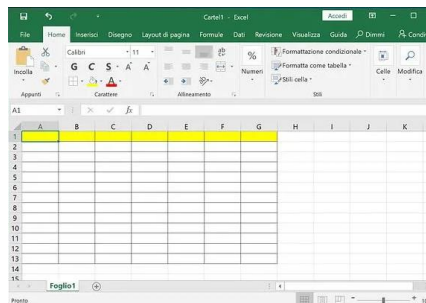
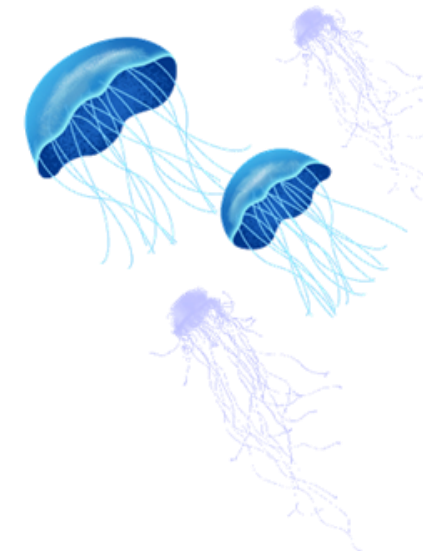
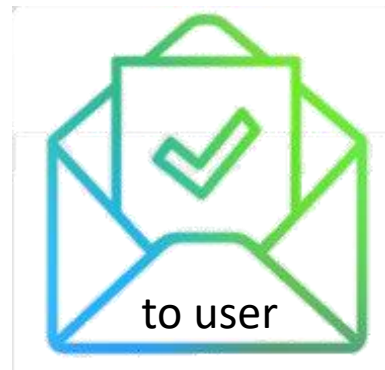
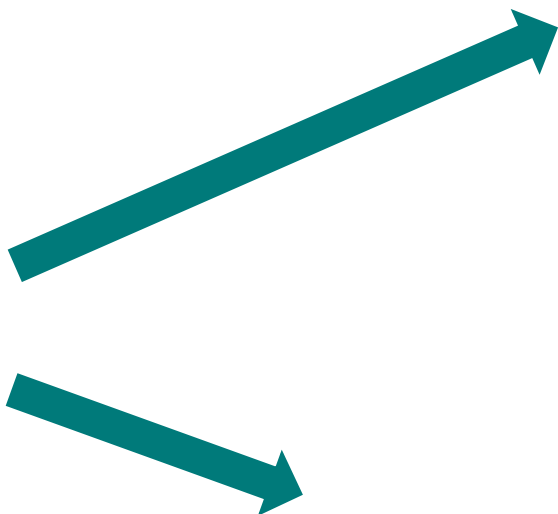
www.avvistapp.it



Jelly

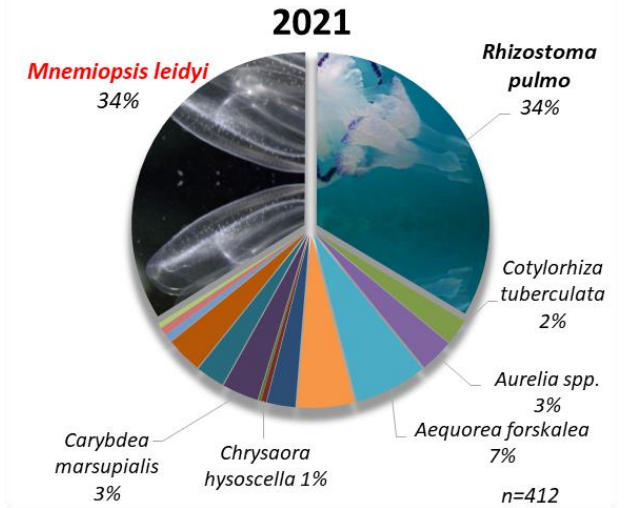
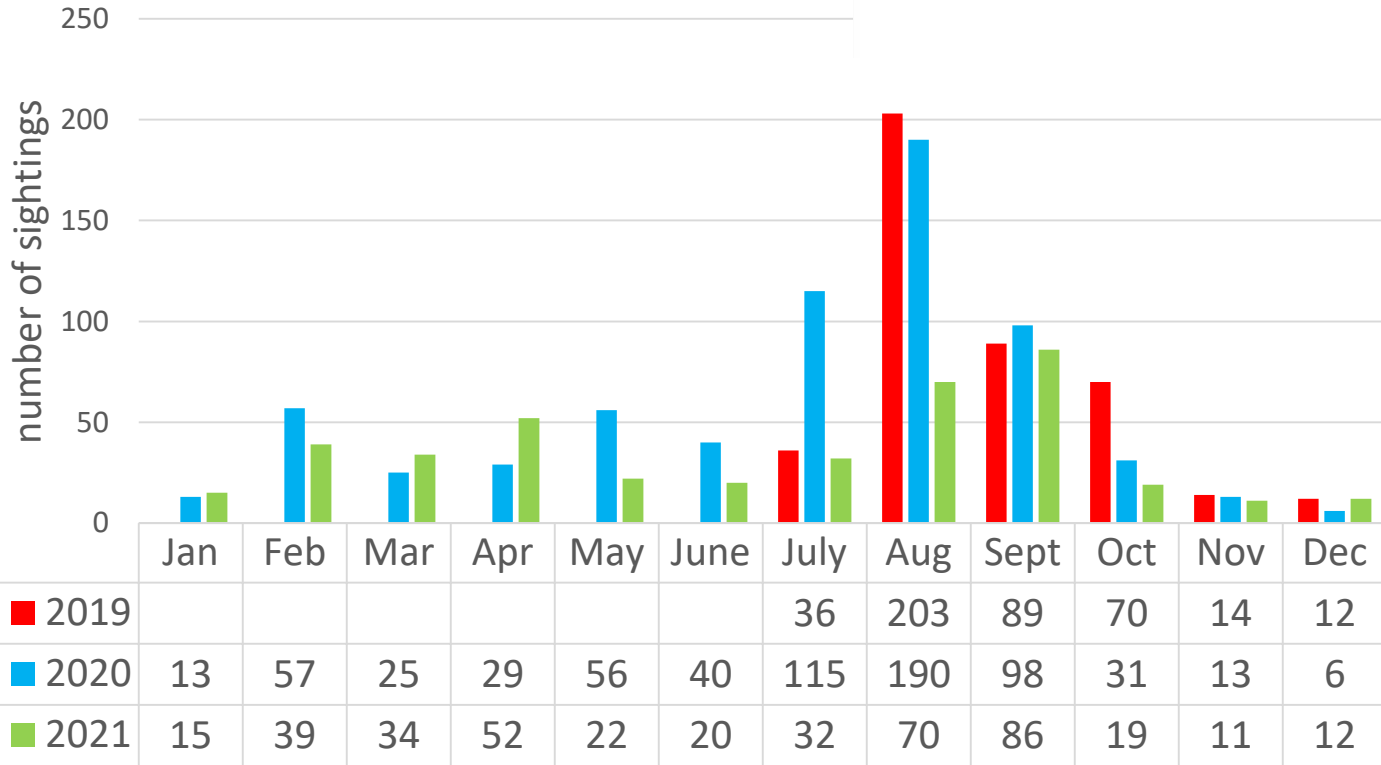
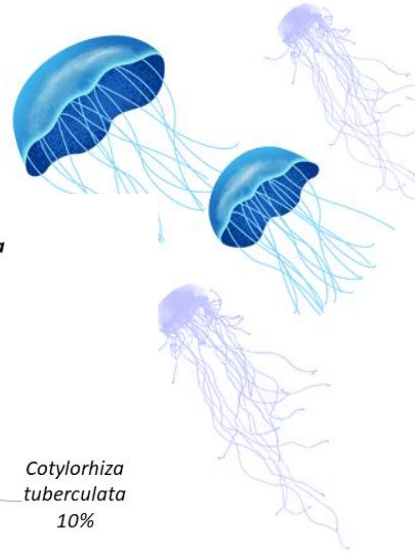
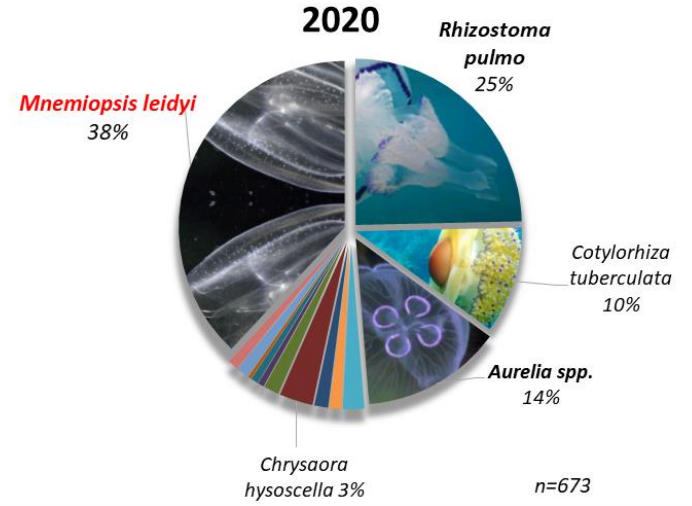
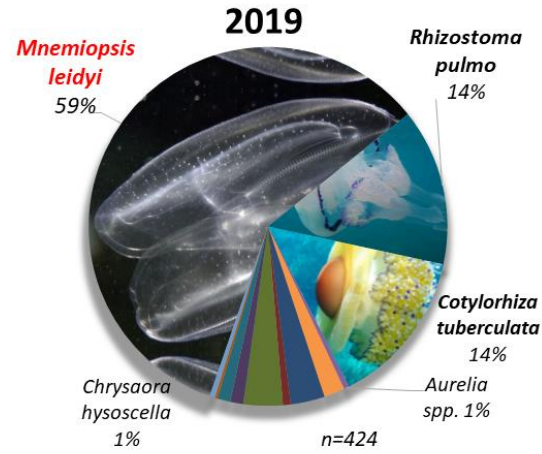
SYSTEMS AND TOOLS FOR LOCATING BLOOM OF JELLYFISH AND PREDICTING THEIR DISPLACEMENT TOWARDS THE COAST





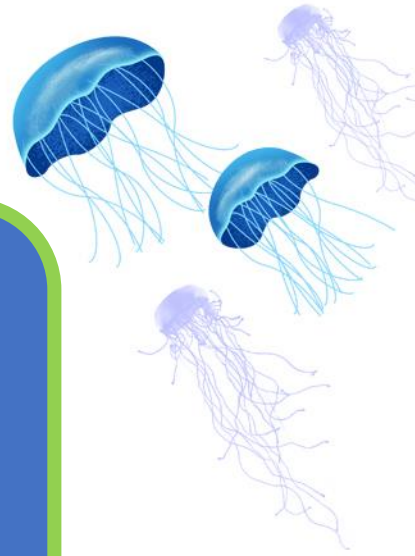
and freely available
for all interested
people





Jelly

SYSTEMS AND TOOLS FOR LOCATING
BLOOM OF JELLYFISH AND PREDICTING
THEIR DISPLACEMENT TOWARDS
THE COAST



STRENGTHS

- It takes advantage of the human curiosity for the marine world and the predisposition to use of mobile phone
- Easy to use and free
- Very versatile: useful for monitoring NIS but also many other species

WEAKNESSES

It requires a lot of effort:

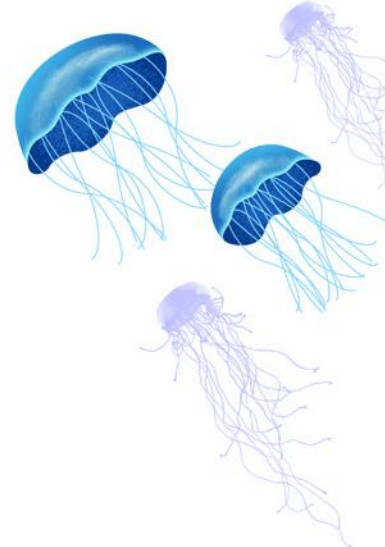
- to keep the validation of sightings up to date
- **to promote the app and keep citizens interested**

OPPORTUNITIES

- A lot of data can be «easy» collected
- Citizens' awareness about marine biodiversity and the problems arising from NIS increases

THREATS

The target audience must be willing to participate and must continue to do so over time



Many thanks for your attention

for any question vtirelli@ogs.it

