

Verification of reproductive success

Evento finale Life PERDIX
28-29.11.2024

ECOMUSEO IMPIANTO IDROVORO DI MAROZZO (FE)

«Verifica del successo riproduttivo»

*Chiara Gabbrielli – Tecnico Faunistico
Consulente FIdC*

Coordinatore beneficiario

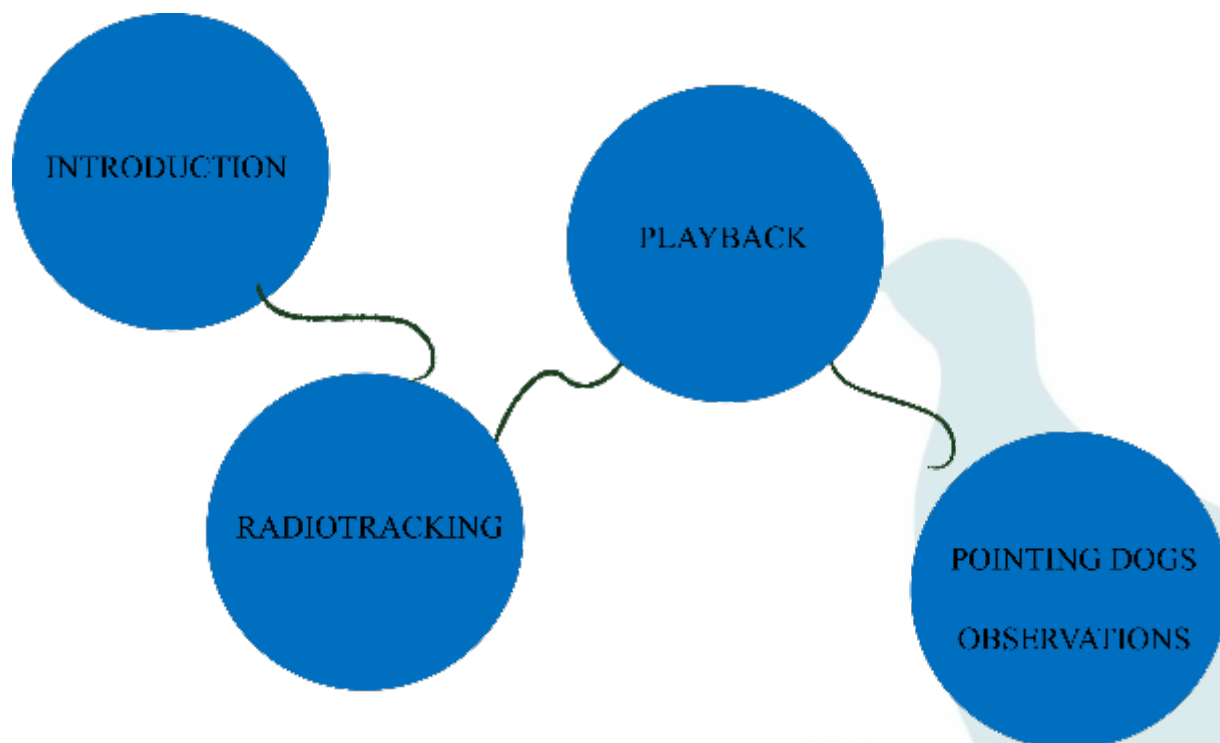


Beneficiari associati



Cofinanziatori







- Reproductive success of the brigades
- Sample areas: fields
- Location of the areas: based on spring monitoring
- Qualified operators
- Subdivision of the area
- Period: august – september





- Experience
- Resistance
- Meteo condition: wind, mist
- Soil condition
- 4 hour after sunrise











- By foot/car
- Sample areas: transects
- Location of the areas: based on spring monitoring
- Observation with binoculars
- Sightings
- Morning and evening (sunrise and sunset)




[illegible]

Censimento post-riproduttivo della Starna italica nella Valle del Mezzano



Tipo di Censimento

Con cani da ferma 

Osservazioni ☐

DATA

N. Foglio

Ora inizio

Ora fine

N. Cani

Conduuttore

Osservatore



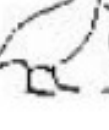
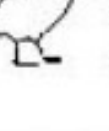
Vento (Assente, Debole, Medio, Forte)

[illegible]

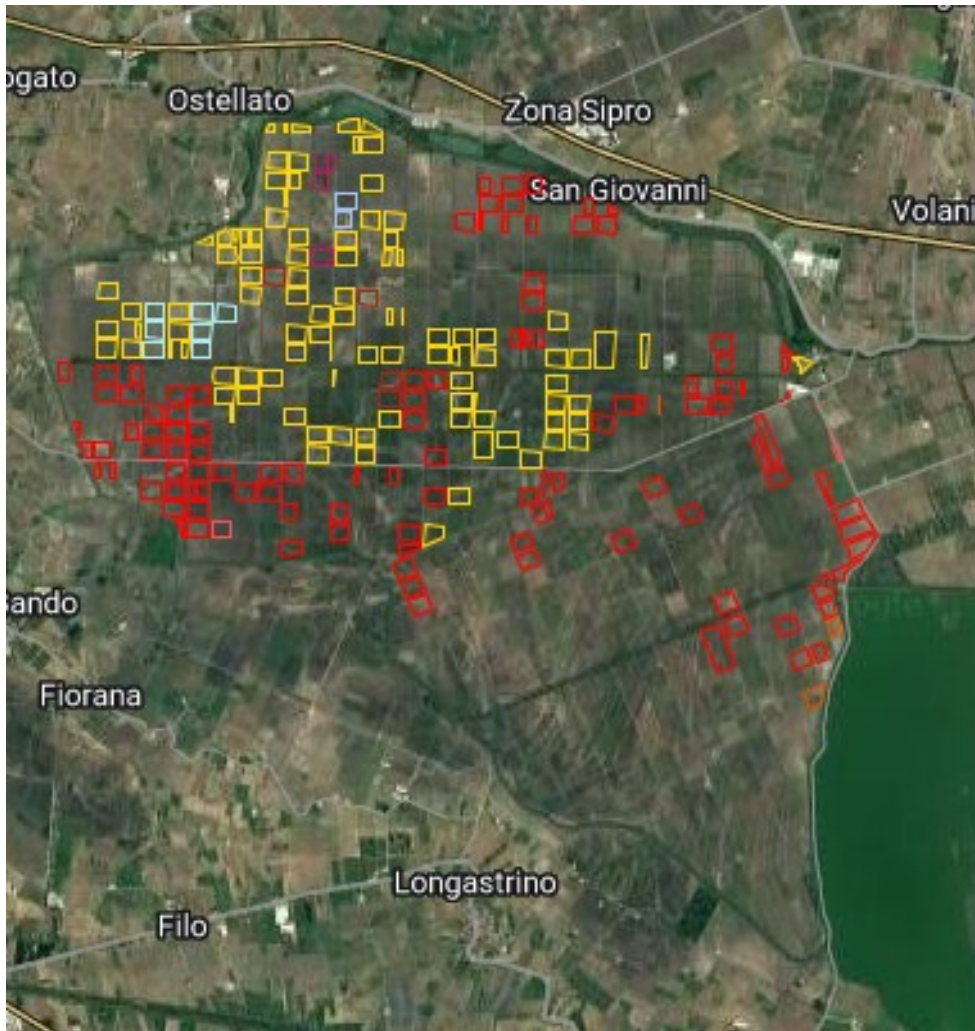
N. SQUADRO	ORA	COPPIE	IND ISOLATO	N. GIOVANI	ETA' GIOVANI	DIR. SPOSTAMENTO	X	Y	TIPOLOGIA AMBIENTALE
12	6:36	1	-	3	1	S	44.71393	11.951398	bordo strada, frangivento
12	6:45	1	-	-	-	SE	44.713848	11.957200	bordo canale
35	6:20	-	1F	2	2	NE	44.71012	11.94921	stoppie
35	6:29	-	1M	-	2	N	44.1111	11.9498	stoppie vicino scolina
37	7:33	1	-	-	-	NO	44.71062	11.95745	scolina bordo strada

[illegible]

DETERMINAZIONE DELLA CLASSE DI ETÀ DEI GIOVANI

	1 Meno di 30 giorni (1/4 di un adulto)
	2 Circa 30 giorni (1/2 di un adulto)
	3 Circa 60 giorni (3/4 di un adulto)
	4 Circa 90 giorni (come un adulto)

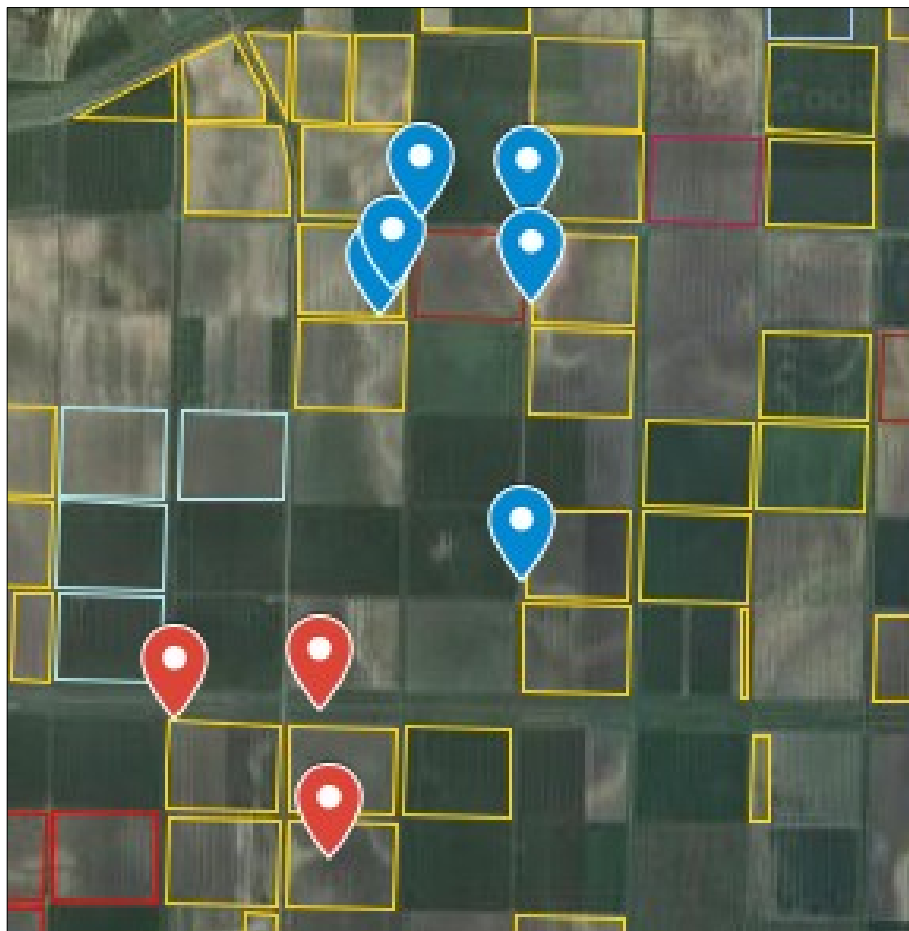
Pointing dogs



Direct observations



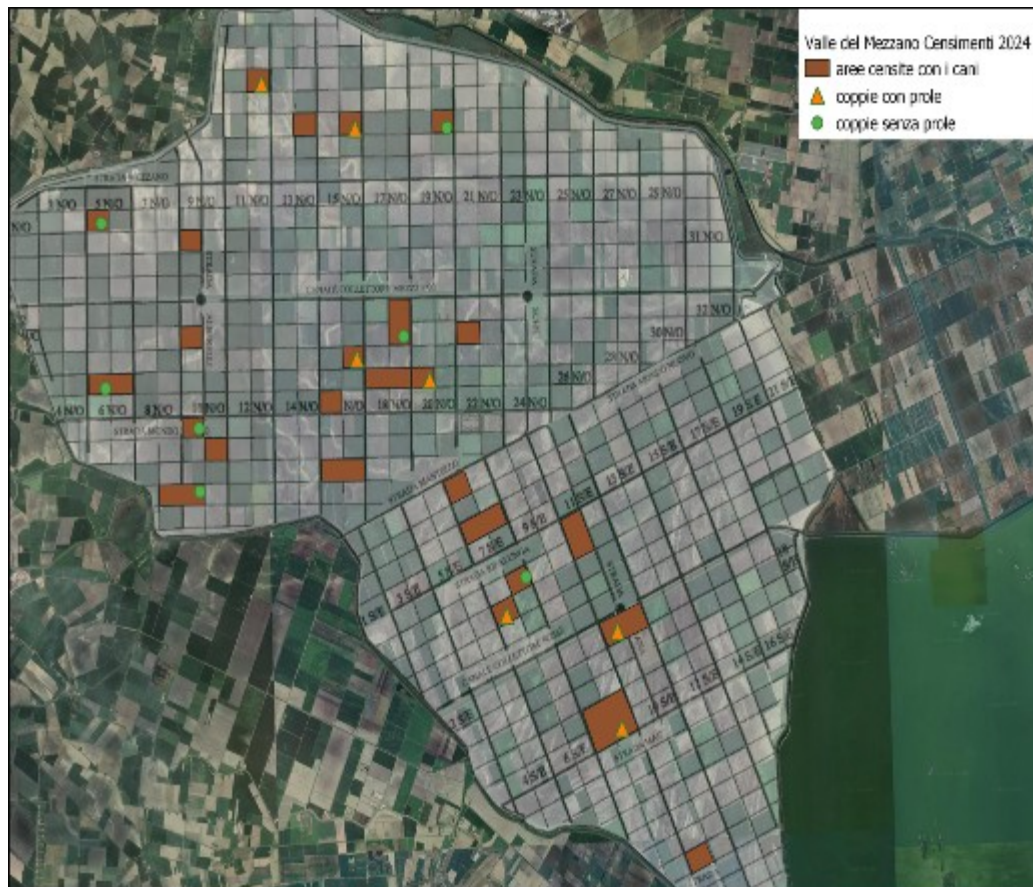
Pointing dogs



Direct observations



Pointing dogs 2024



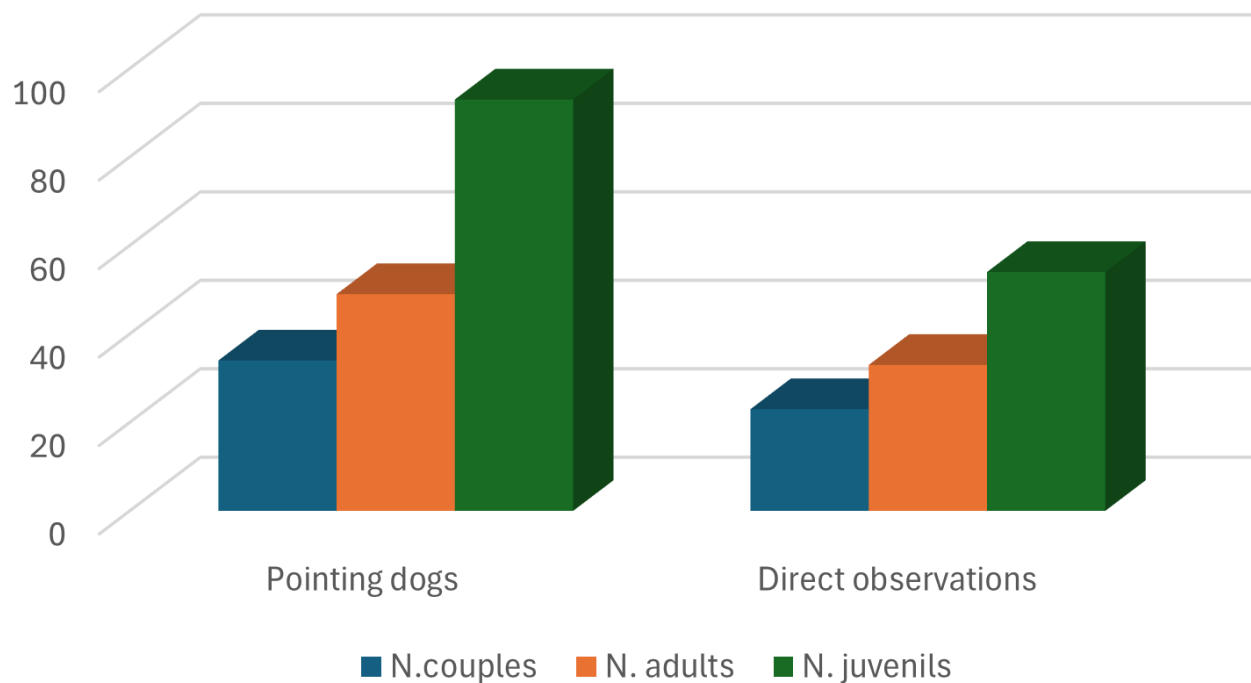
- 9,25 km² of investigated areas by pointing dogs

Direct observations 2024

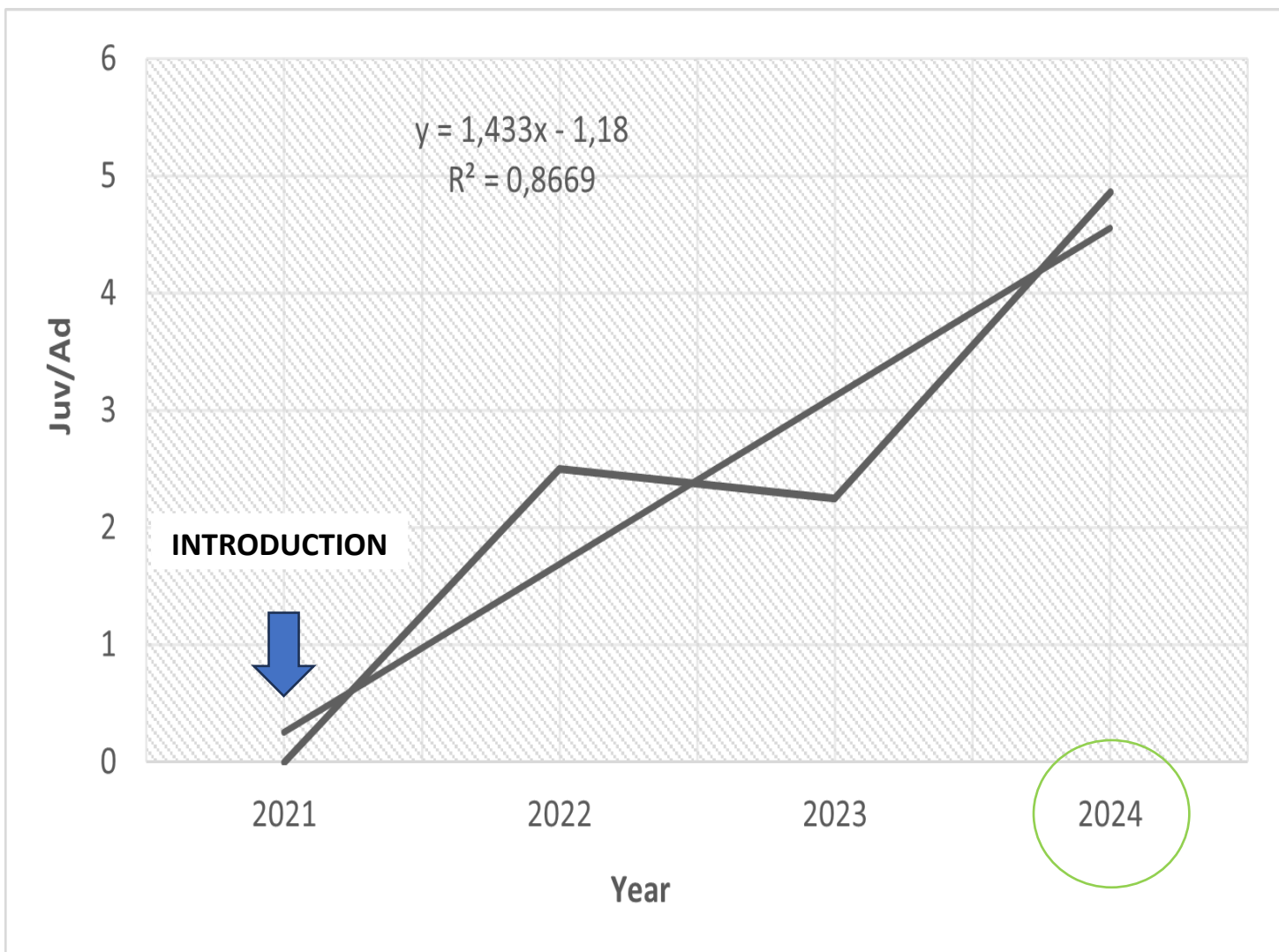


- 76 transects
- More than 150 kilometres

Observations and pointing dogs 2024

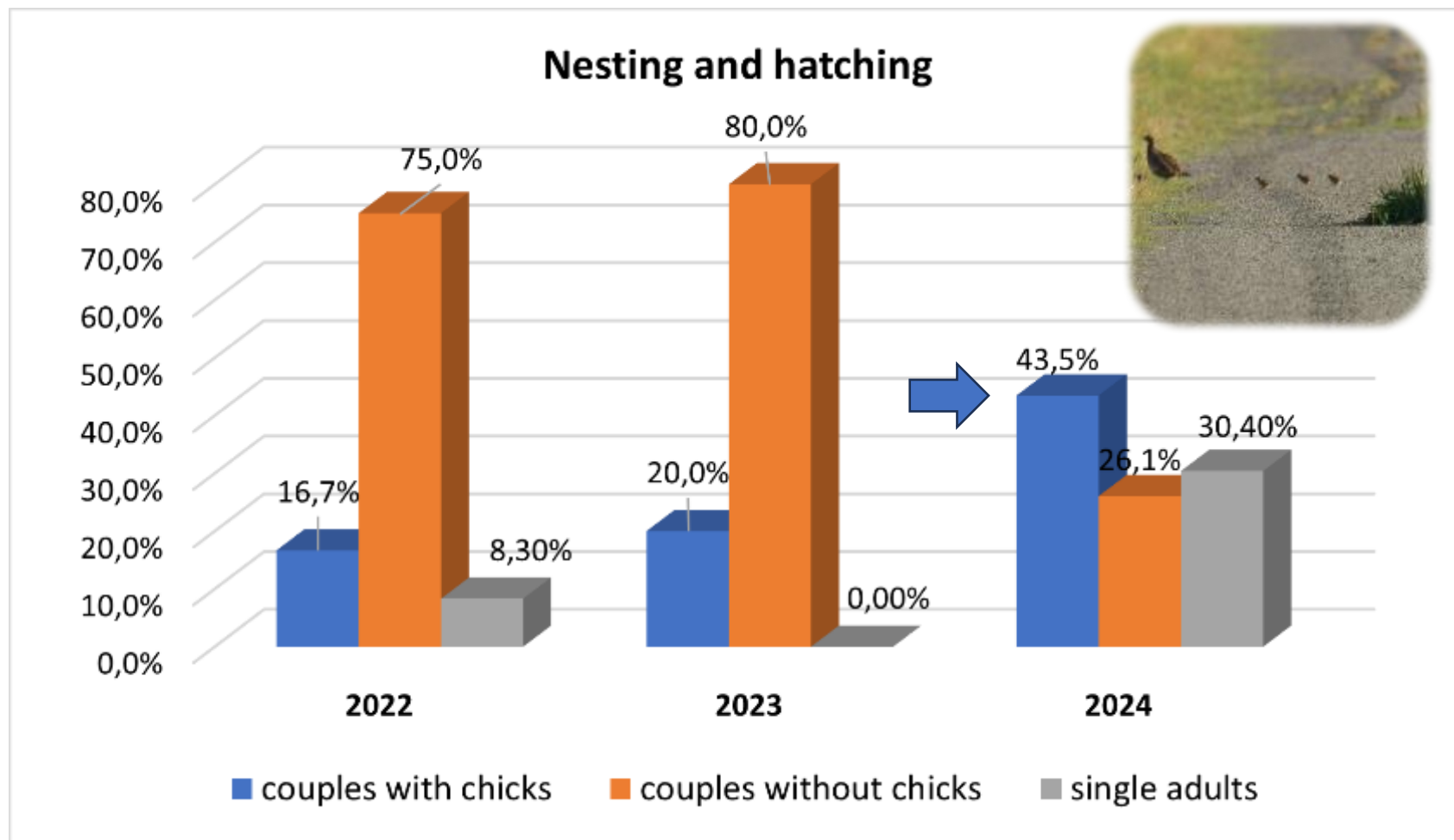


Type of monitoring	Reproductive couples (%)	Mean N. chicks/females (jj/FF)
Pointing dogs	57	5,33
Direct observations	56	4,50



- Juvenils/adults index
- Slight decrease in 2023
- Improvement in 2024
- Higer contactability





- Increasing trend of couples with chicks
- Higer values (%) of couples with chicks in 2024

- Increase in the number of observations in 2024: greater attention to health monitoring, intensive feeder replenishment activity, increased fitness
- Increasing trend from 2022 to 2024: better environmental conditions, environmental improvements
- Decrease in contacts in 2023: weather conditions → dogs performance and actual possibility of monitoring
- Influence of climate: drought → availability of food for chicks
- Operator experience
- Increased awareness: voluntary reporting





Thank you for the attention!
Grazie per l'attenzione!

